

Prologis Lehigh Valley East

1380 JACOBURG ROAD | WIND GAP, PA



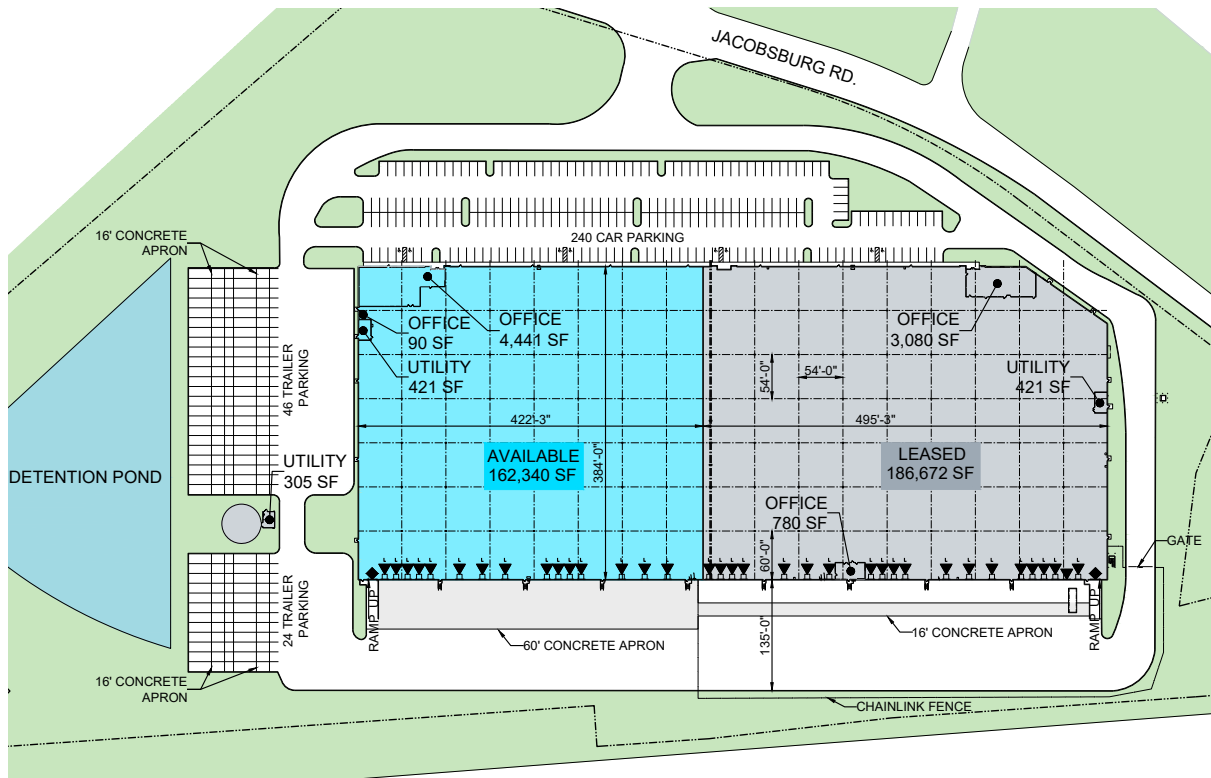
162,340 SF



162,340 SF Available

Location

- Located in the heart of the Lehigh Valley PA market at the Wind Gap/Bath Exit of Route 33
- Close proximity to major transportation arteries: I-78, I-80, Route 33 & Route 22
- Within 10 minute of UPS's Lehigh Valley hub & 25 minutes of FedEx's largest hub in the US
- 90-minute drive time to NYC & Ports of NJ

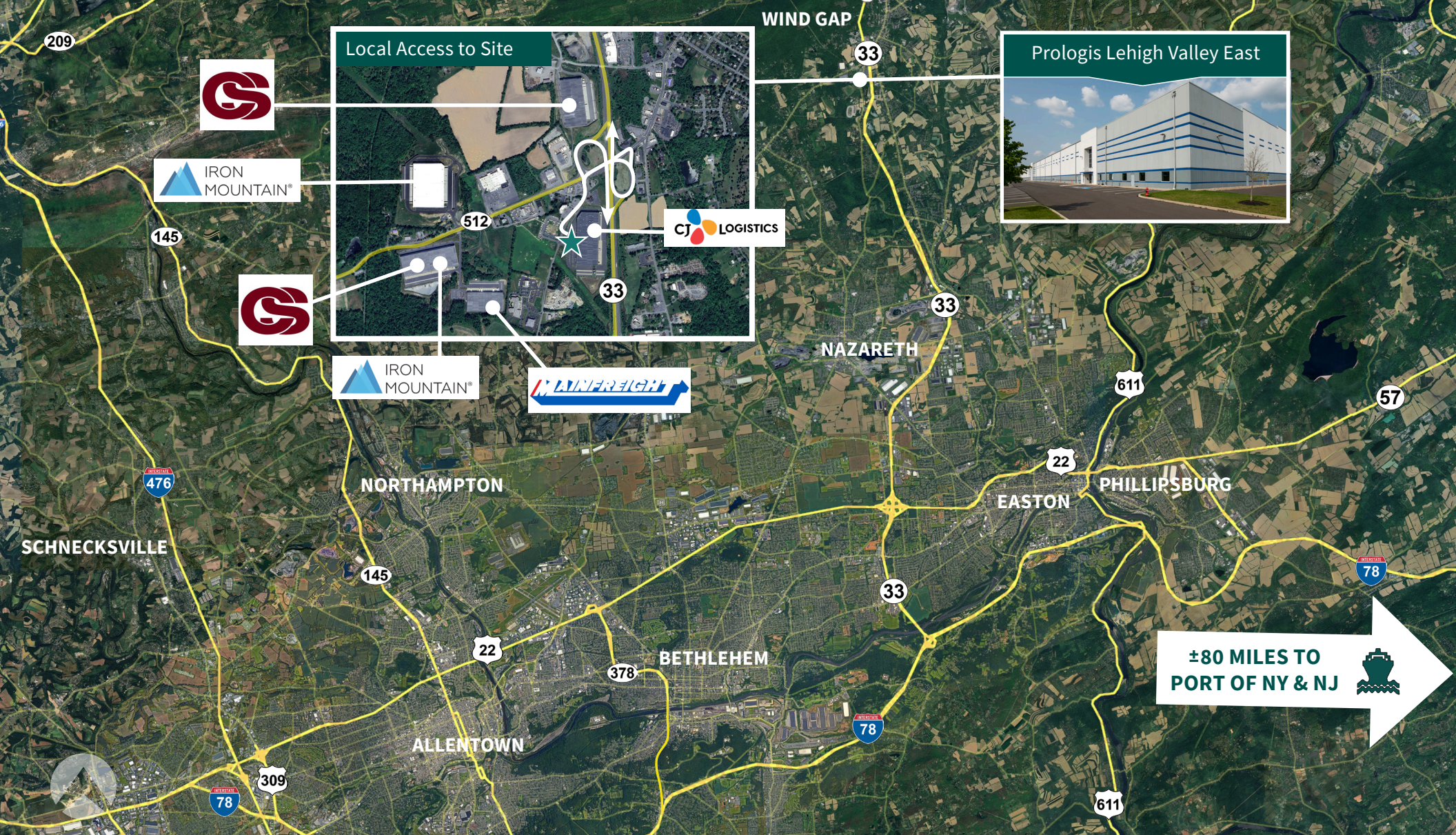


Building Specifications

- 349,012 SF total building size
- 162,340 SF available
- Built in 2018
- 4,441 SF existing main office
- 38'1" clear height at bottom of steel at first bay
- (15) 9' x 10' fully equipped loading doors; expandable to 25
- (1) 12' x 14' drive-in door
- 54' x 54' column spacing
- 240 auto parking spaces
- 70 trailer parking lot spaces
- 135' truck court with 60' concrete aprons
- Single-side load configuration
- 1,200 amps, 277/480 volt, 3-phase electrical service
- LED warehouse lighting
- ESFR sprinkler system with K-25 heads



- ▼ Dock position
- ▲ Dock position w/ leveler
- ◆ Drive-in door
- ▣ Leased
- ▣ Available
- ▣ Land
- ▣ Water



Demographics



Total Population



Total Labor Force



Blue Collar %

30 MINUTES

548,688

287,864

24%

