



# THE POINT

16745 & 16765 W BERNARDO DRIVE

Jones Lang LaSalle Brokerage, Inc.  
RE license #01856260

## ± 190K SF CLASS A CAMPUS

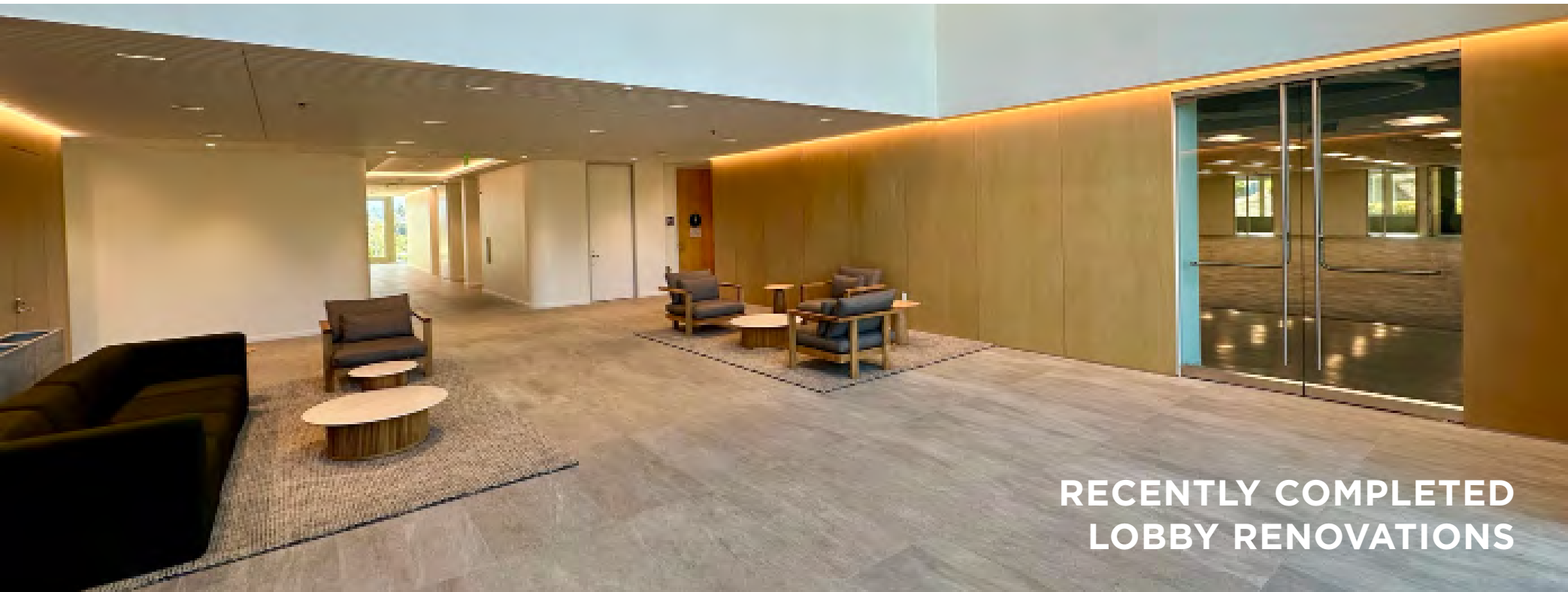
The Point is the premier Class “A” project in Rancho Bernardo. Its image, panoramic views, scalability, efficiency and prominent location attract office users seeking the ultimate Class A experience.





THE POINT





**RECENTLY COMPLETED  
LOBBY RENOVATIONS**



THE POINT

MIVA

**±190,000 SF**

**217,000 CARS**

**I-15 & SR 56**

**4.0/1,000**

**SCALABILITY NEGOTIABLE**

Two, four story Class A office buildings

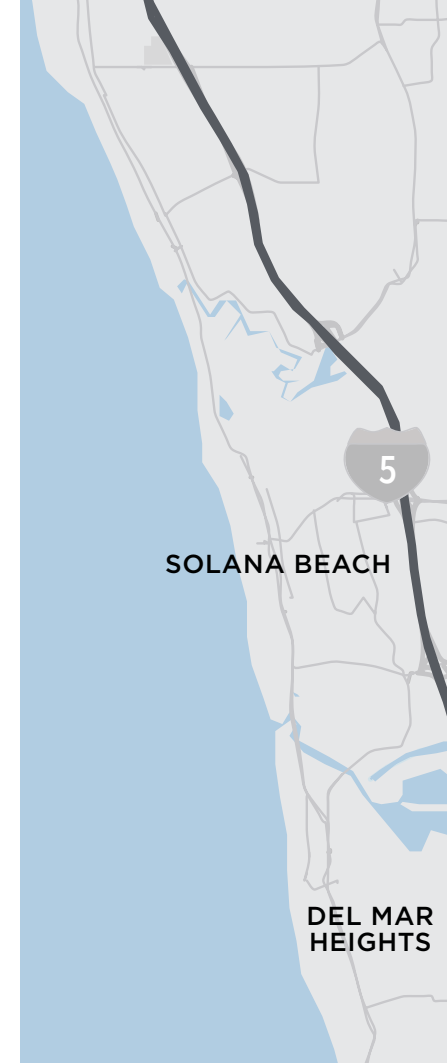
Average daily traffic volume — excellent freeway visibility

Freeways easily accessible

Parking ratio; expandable

Additional building of 100,000 - 300,000 SF to be constructed in future phase

Lease rate



## FEATURES

Signage opportunities available

Panoramic views

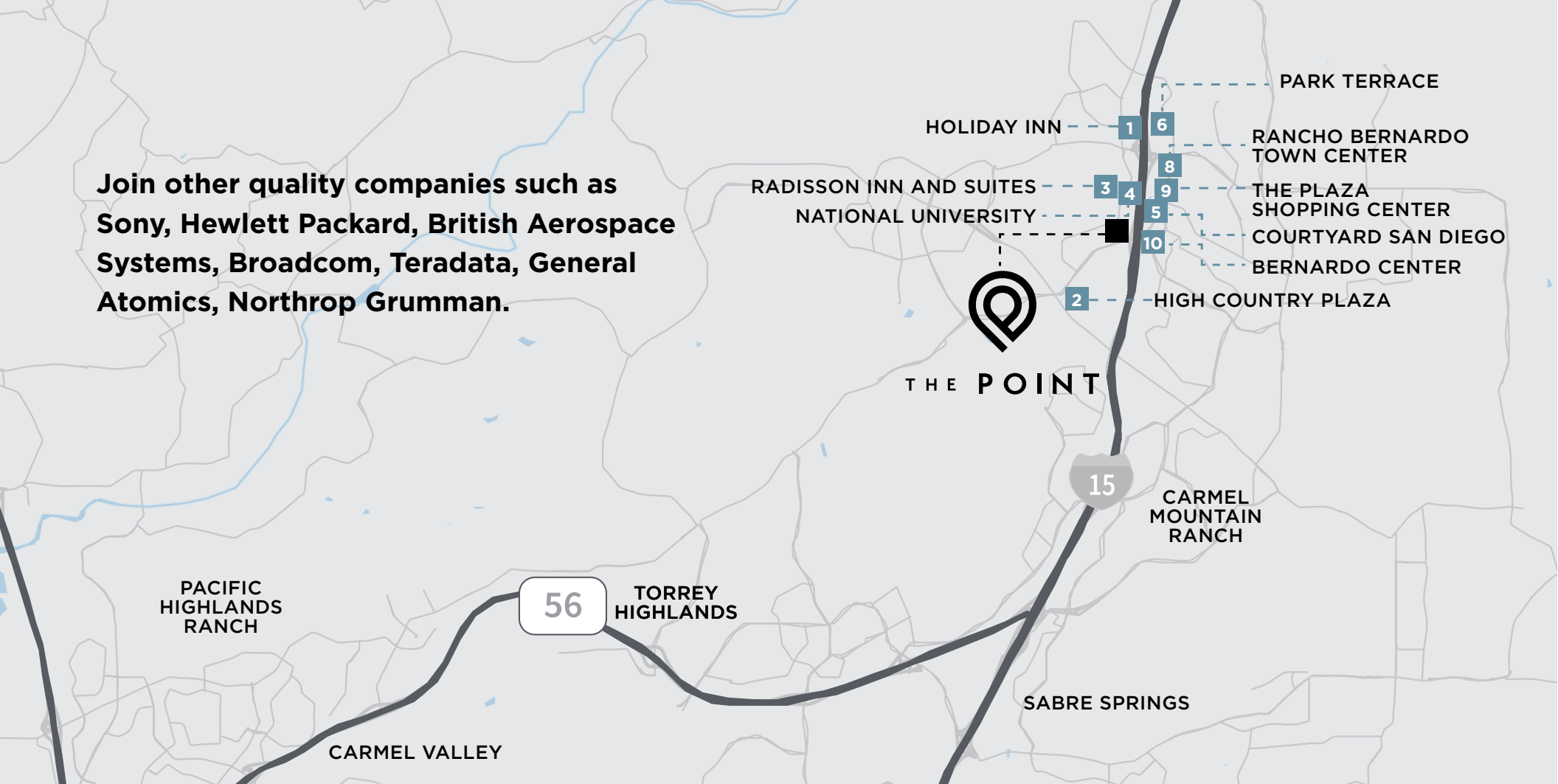
Future development opportunities available on-site [www.elevationrb.com](http://www.elevationrb.com)

Showers and locker facilities

Distinctive architecture and vaulted lobby

Conveniently located adjacent to the Rancho Bernardo Direct Access Ramp/Transit Station allowing for direct access to the Express Lanes and creating congestion-free travel.

**Join other quality companies such as Sony, Hewlett Packard, British Aerospace Systems, Broadcom, Teradata, General Atomics, Northrop Grumman.**



**1. Holiday Inn**

**2. High Country Plaza**

7 Eleven  
Kelly's Public House  
Domino's Pizza  
Jersey Mike's Sub

**3. Radisson Inn and Suites**

**4. National University**

**5. Courtyard San Diego**

Rancho Bernardo

**6. Park Terrace**

Hilton Garden Inn, 24-Hour Fitness,  
Souplantation, Stir Fresh Mongolian Grill

**7. The Mercado**

Barons Marketplace, Submarina, Trend Cuts,  
Cotija's Mexican Food, Golden Spoon,  
Domino's Pizza, Pho Ca Dao & Grill, Pars  
Persian Cuisine, Navy Federal Credit Union,  
Circle K, Incredible Cafe, FedEx Office Print  
& Shop Center

**8. Rancho Bernardo Town Center**

Wells Fargo, Chase Bank, Chuze Fitness,  
Vons, Postal Annex, Starbucks Coffee,  
Towne Center Cleaners, Pizza Hut, Iron Wok,  
Subway, Sidney's Deli

**9. The Plaza Shopping Center**

CVS Pharmacy, San Diego National Bank,  
New Panda Buffet, Coco's Restaurant, Urge  
American Gastropub, Pegasus Café, Ginza,  
Hunan, Jack in the Box, Akai Hana, Kabob  
House, Barrel Room, Los Primos, Big 5  
Sporting Goods, Round Table Pizza, Nextel,  
Bonelli's Pizza and Pasta, Rubio's, Bruegger's  
Bagels, Chevron, Draper's & Damon's

**10. Bernardo Center**

Pacific Western Bank, Little Caesars Pizza,  
Spices Thai Cafe, Pho Hoang Express, RB  
Sushi Japanese, Pro Barber

# 16745 W BERNARDO DRIVE | 1ST FLOOR

## Suite 150

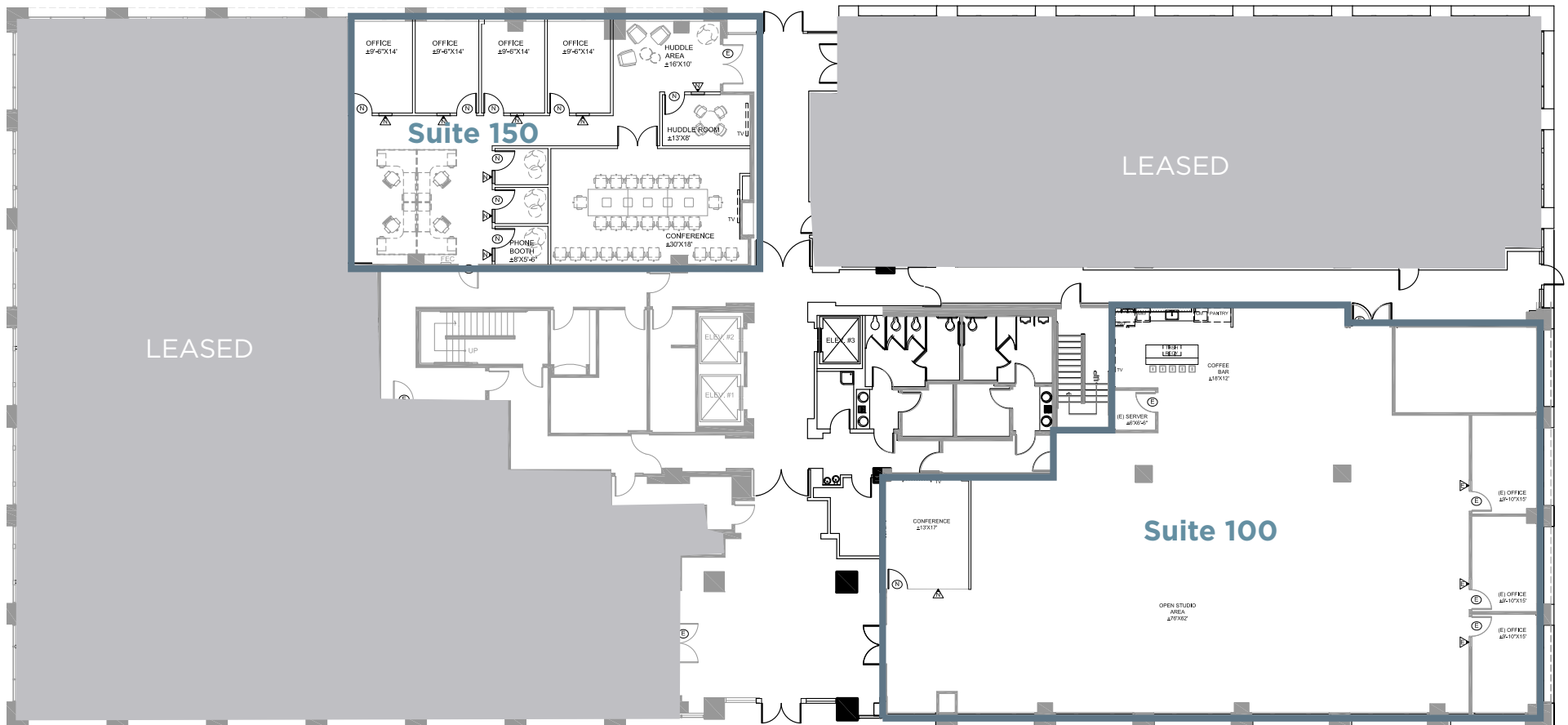
2,637 SF (Available now)

## Suite 100

5,730 SF (Available now)



TAKE A TOUR  
SUITE 100



# INTERIOR PHOTOS



THE POINT

## Suite 100



## Suite 150

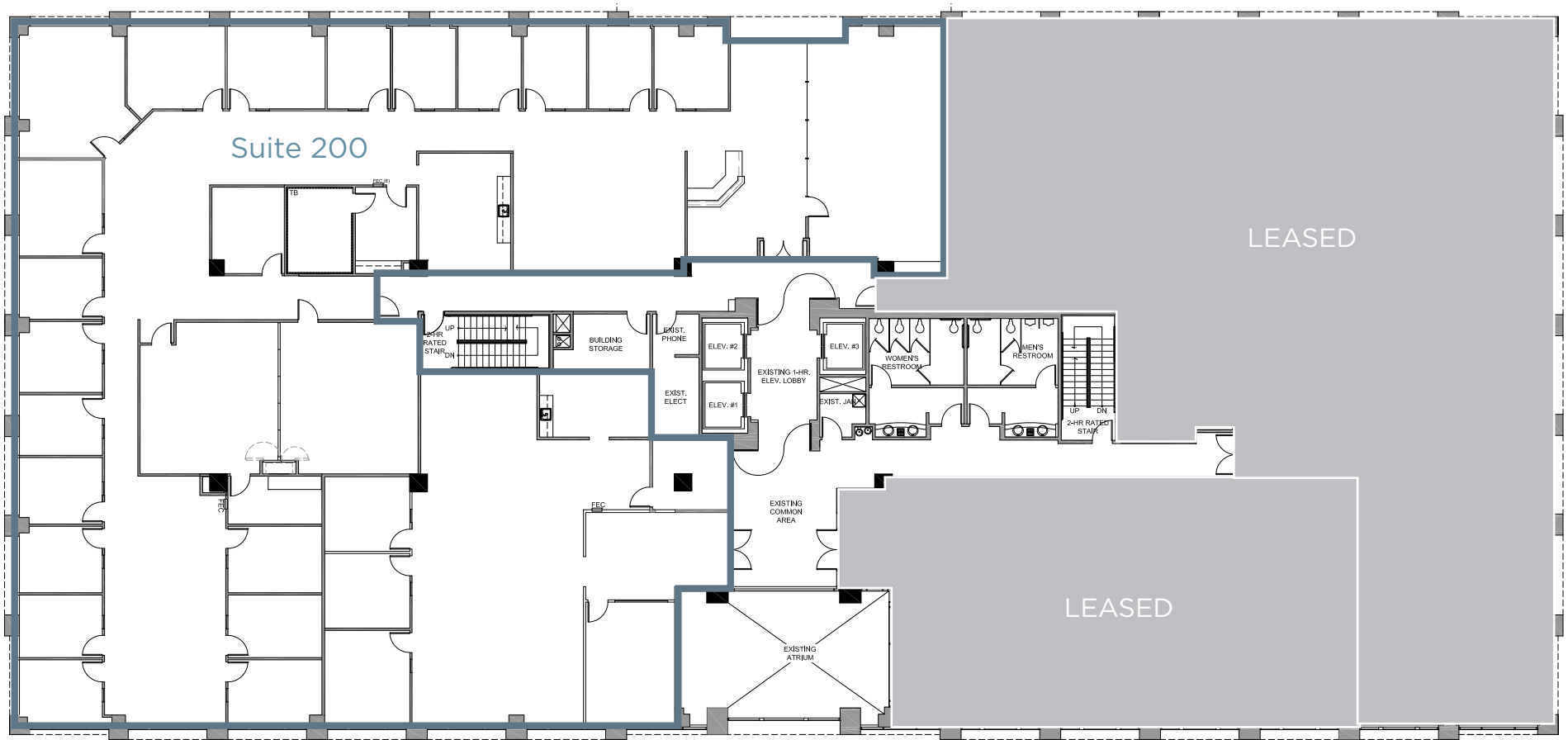


# 16745 W BERNARDO DRIVE | 2ND FLOOR | AS-BUILT PLANS

## Suite 200

13,232 SF (Available now)

\*divisible to ~3,500 SF



# 16745 W BERNARDO DRIVE | 2ND FLOOR | SPEC PLANS

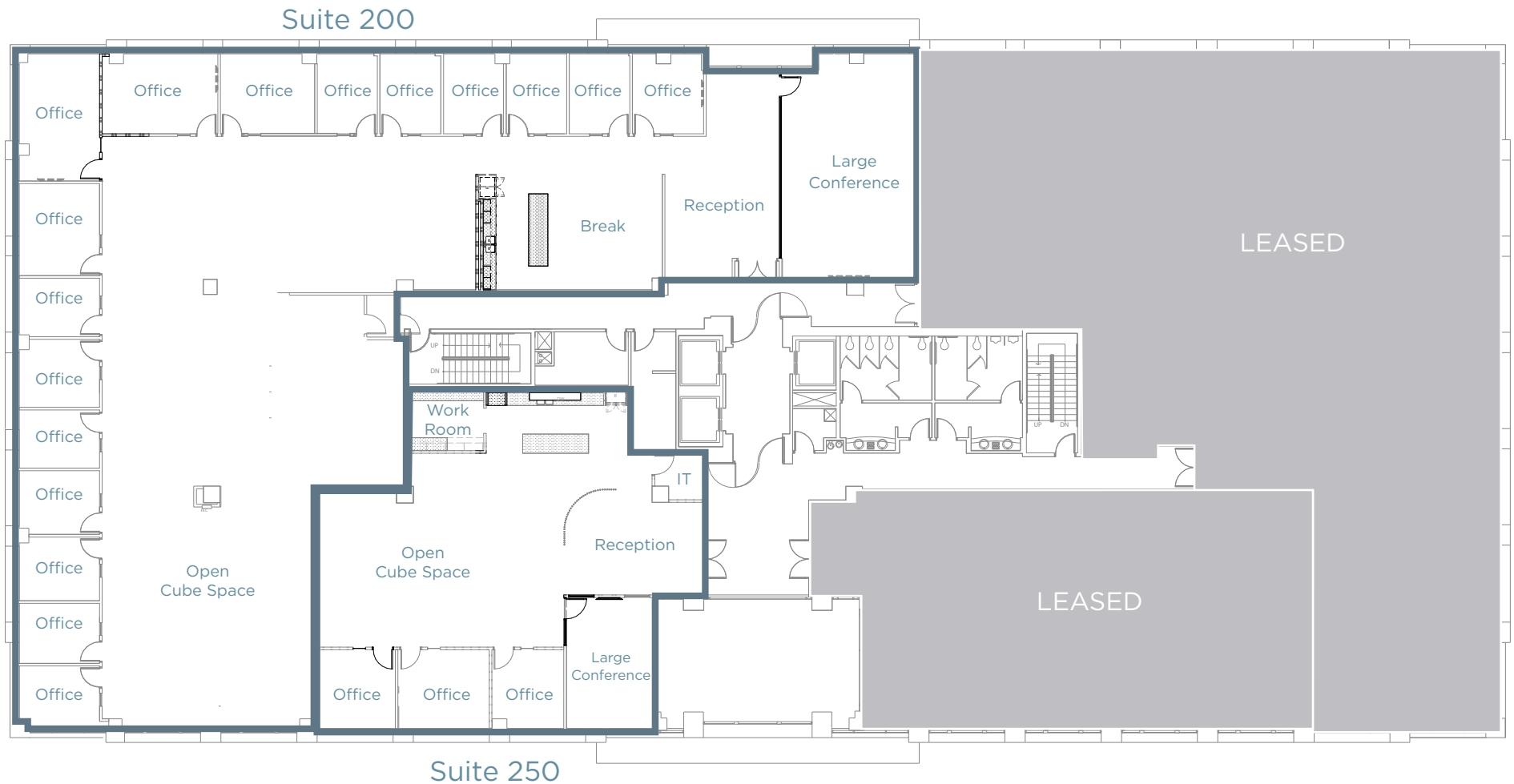
**\*DELIVERING Q4 2026**

## Suite 200

9,965 SF

## Suite 250

3,267 SF





# THE POINT

16745 & 16765 W BERNARDO DRIVE



Tony Russell  
858.410.1213  
tony.russell@jll.com  
RE Lic. #01275372

Greg Moore  
858.410.1188  
greg.moore@jll.com  
RE Lic. #02068852



Although information has been obtained from sources deemed reliable, neither Owner nor JLL makes any guarantees, warranties or representations, express or implied, as to the completeness or accuracy as to the information contained herein. Any projections, opinions, assumptions or estimates used are for example only. There may be differences between projected and actual results, and those differences may be material. The Property may be withdrawn without notice. Neither Owner nor JLL accepts any liability for any loss or damage suffered by any party resulting from reliance on this information. If the recipient of this information has signed a confidentiality agreement regarding this matter, this information is subject to the terms of that agreement. ©2026.Jones Lang LaSalle IP, Inc. All rights reserved.