 **JLL** SEE A BRIGHTER WAY

For Lease

Gateway District Office Space
921 Huron Road, Cleveland, OH

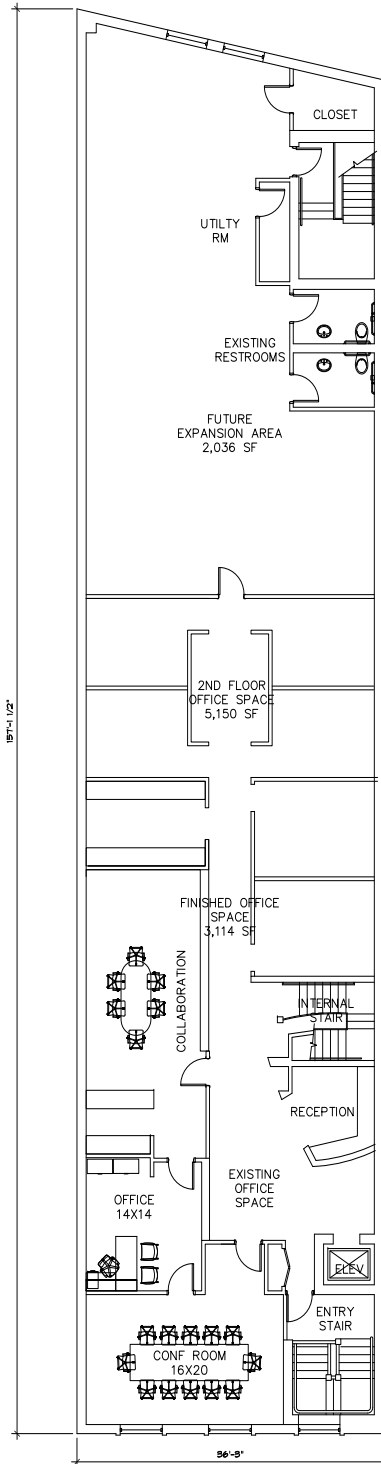
921 Huron Road / Cleveland

Gateway District Office Space

Property Highlights

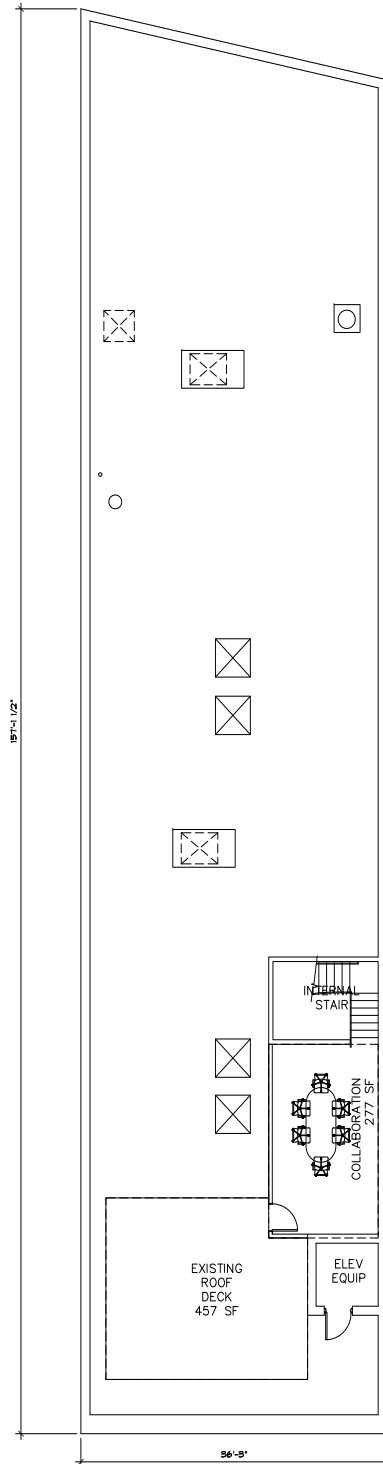
- 5,150 total square feet (divisible)
 - 3,114 built out office space
 - 2,036 raw/storage space—can be built out
- Private Roof Deck
- \$19.75/SF MG
- Billboard signage opportunities
- Located at Huron Rd, East 9th St, Prospect Ave
- Parking available at Cuyahoga County HQ garage
- Prime walkable location with convenient access to vibrant dining, entertainment, and cultural landmarks.





2ND FLOOR OFFICE SPACE: 5,150 SF
 MEZZANINE AREA: 277 SF
 TOTAL LEASABLE AREA: 5,427 SF
 EXTERIOR ROOF DECK: 457 SF

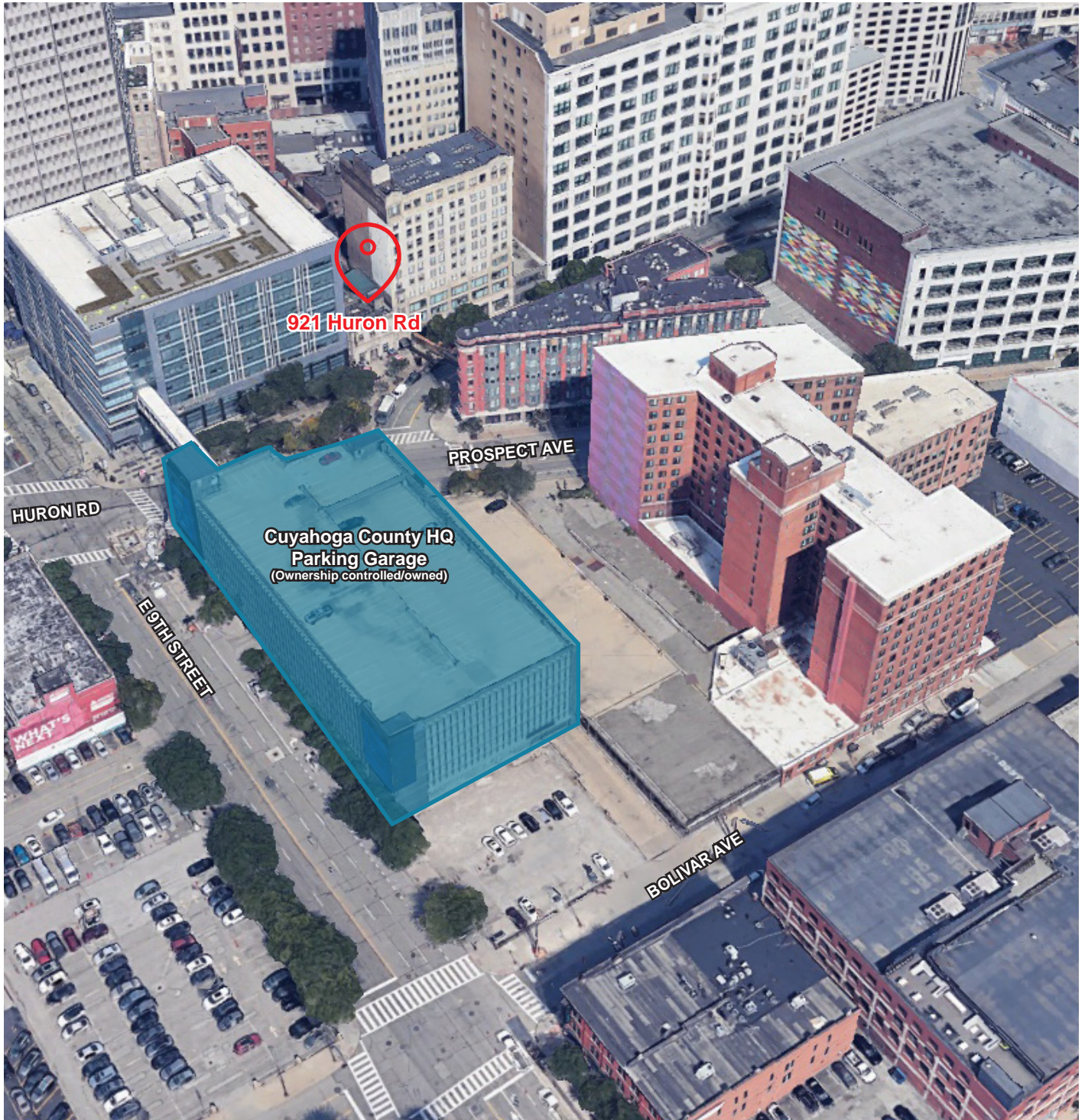
SECOND FLOOR
 SCALE: NONE



ROOF PLAN
 SCALE: NONE



Parking Location





The Gateway District stands as Cleveland's most dynamic neighborhood and the city's undisputed sports and entertainment epicenter. Anchored by two world-class venues—Progressive Field, home to the Cleveland Guardians, and the 20,000-seat Rocket Mortgage FieldHouse, which hosts both the Cavaliers and the Cleveland Monsters—this district draws more visitors than any other Downtown Cleveland neighborhood. The addition of Cosm Cleveland, an innovative immersive entertainment venue featuring a 12K LED dome that broke ground in April 2026, signals the district's continued evolution as a cutting-edge destination for sports and experiential entertainment.

Beyond its massive modern arenas, the Gateway District seamlessly blends historic 19th-century architecture with a vibrant street-level energy fueled by over 60 restaurants and bars. The crown jewel is East 4th Street, a pedestrian-friendly corridor packed with acclaimed dining destinations like Mabel's BBQ and entertainment venues including House of Blues and Hilarities 4th Street Theatre. From Flannery's Pub to Saigon and dozens of other establishments, the district's dense concentration

JLL

Kristy Peters, SIOR
Senior Vice President
kristy.peters@jll.com
+1 (216) 937 4375

Amy Bradford
Vice President
amy.bradford@jll.com
+1 (216) 912 4508