



 **JLL** SEE A BRIGHTER WAY

FOR LEASE

200-I Forsyth Hall Dr. | Charlotte, NC

Industrial space for lease at
Nations Ford Business Park

± 24,000 SF

Property Overview

± 24,000 s.f. available for lease

- ± 2,000 s.f. of office
- 5 dock high doors
- 1 drive in doors
- 20' clear height

Zoned ML-1

Multi-tenant facility

Located in the Westinghouse submarket

Owned by:

EASTGROUP
PROPERTIES

Rich Grieder
Exec. Vice President
+1 704 804 5783
rich.grieder@jll.com

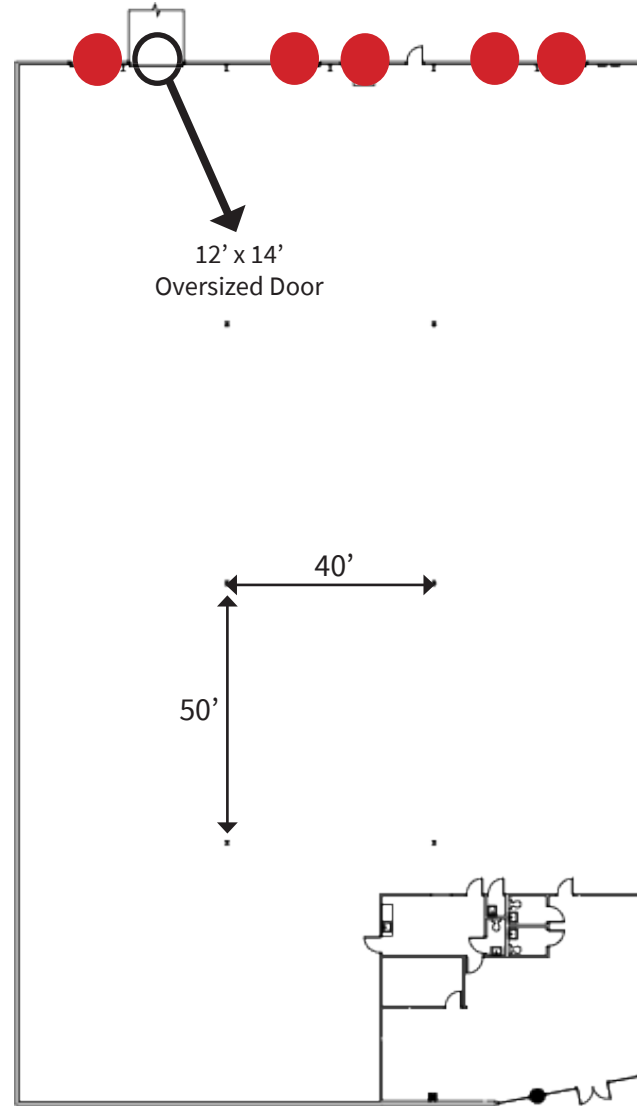
Brad Cherry, CCIM, SIOR
Exec. Managing Director
+1 704 927 3013
brad.cherry@jll.com

Spencer Yorke
Exec. Managing Director
+1 704 927 3004
spencer.yorke@jll.com

Property Specifications

Address	200-I Forsyth Hall Dr., Charlotte, NC 28273
Building size	24,000 s.f
Office size	± 2,000 s.f
Submarket	Westinghouse
Tenancy	Multi-tenant facility
Year built	1989
Clear height	21'-24'
Dock high doors	5 (1 pit leveler)
Drive in doors	1
Sprinklers	Wet
Zoning	ML-1
Power	1200 Amps, 480V 400 Amps, 120/208V
TICAM	\$1.34/SF
Lease rate	Please call broker

● dock-high door
○ drive-in door



For more information:

Rich Grieder

Executive Vice President
+1 704 804 5783
rich.grieder@jll.com

Brad Cherry, CCIM, SIOR

Executive Managing Director
+1 704 927 3013
brad.cherry@jll.com

Spencer Yorke

Executive Managing Director
+1 704 927 3004
spencer.yorke@jll.com

