



For lease

Office space available in
a premier office corridor
in West Des Moines

6,800 SF

3000 Westown Parkway
West Des Moines, Iowa 50266

Property specifications

Available:

- Suite 150: 3,339 SF
- Suite 250: 3,461 SF

Lease rate: Contact broker for pricing

Est. OPEX: Available upon request

Total building size: 13,880 RSF

- Recently remodeled and updated tenant spaces and corridors
- New ownership whose occupying 50% of the building
- Ample parking on-site
- Located along Westown Parkway, a highly visible corridor in West Des Moines
- Convenient access to Interstate 235
- In close proximity to numerous retailers, entertainment, restaurant, and other office users

Contact broker for
additional information

jll.com/des-moines

Jones Lang LaSalle Brokerage, Inc.

Thomas Edwards

Associate

thomas.edwards@jll.com

+1 515 802 4684

Lucas Hedstrom

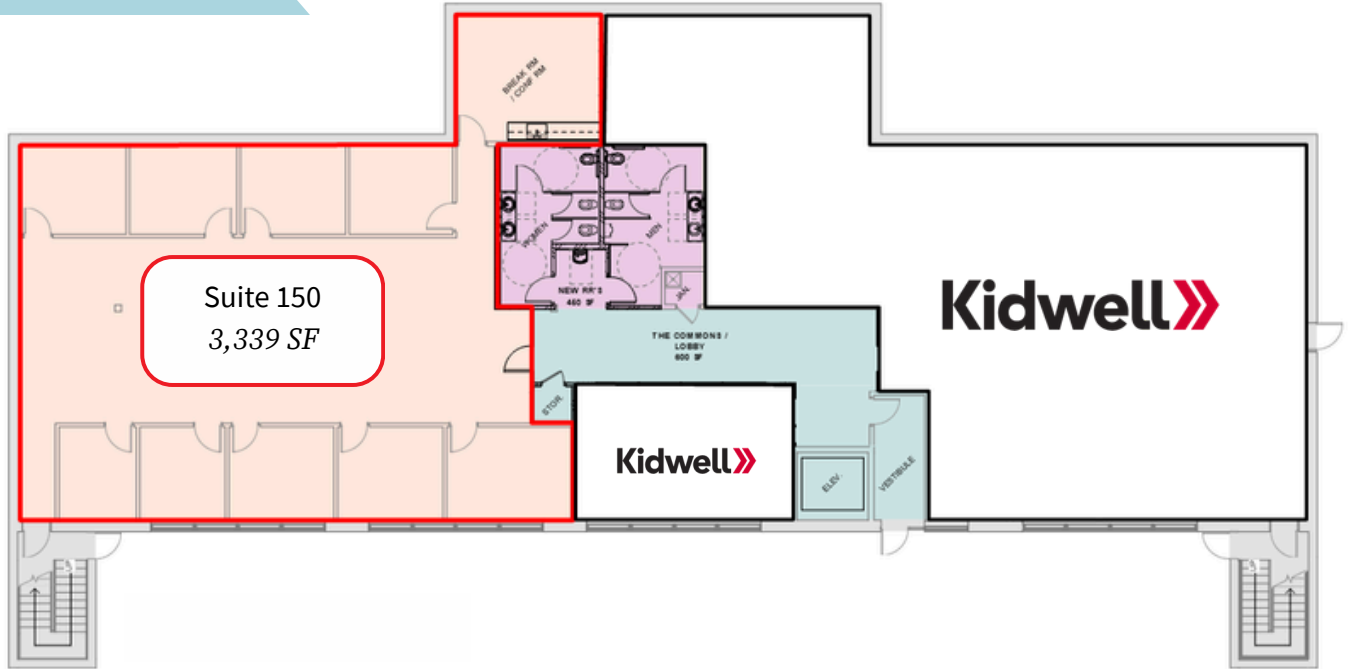
Vice President

lucas.hedstrom@jll.com

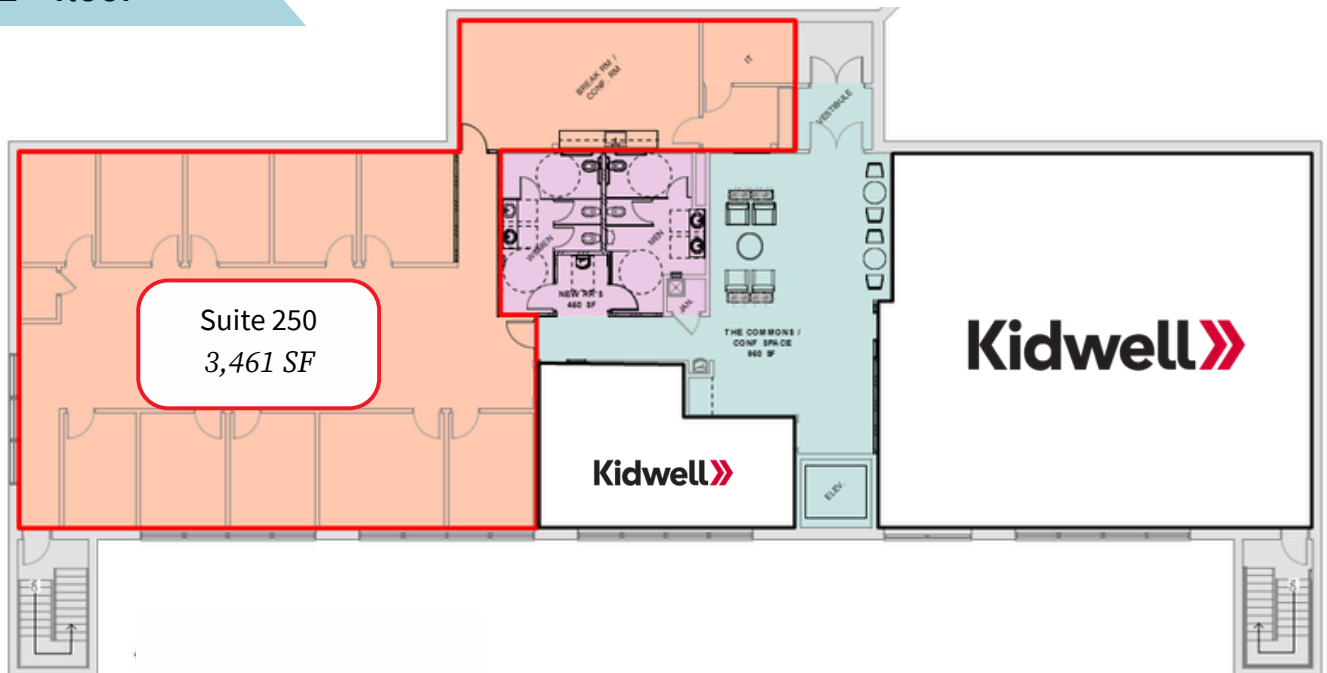
+1 515 564 9269

Floorplan

1st floor



2nd floor



Images



For lease

3000 Westown Parkway | West Des Moines, IA 50266



Thomas Edwards
thomas.edwards@jll.com
+1 515 802 4684

Lucas Hedstrom
lucas.hedstrom@jll.com
+1 515 564 9269

jll.com/des-moines
Jones Lang LaSalle Americas, Inc.

