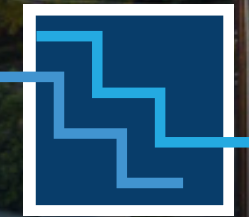


# Built for Innovation



TWENTY  
GREENWAY



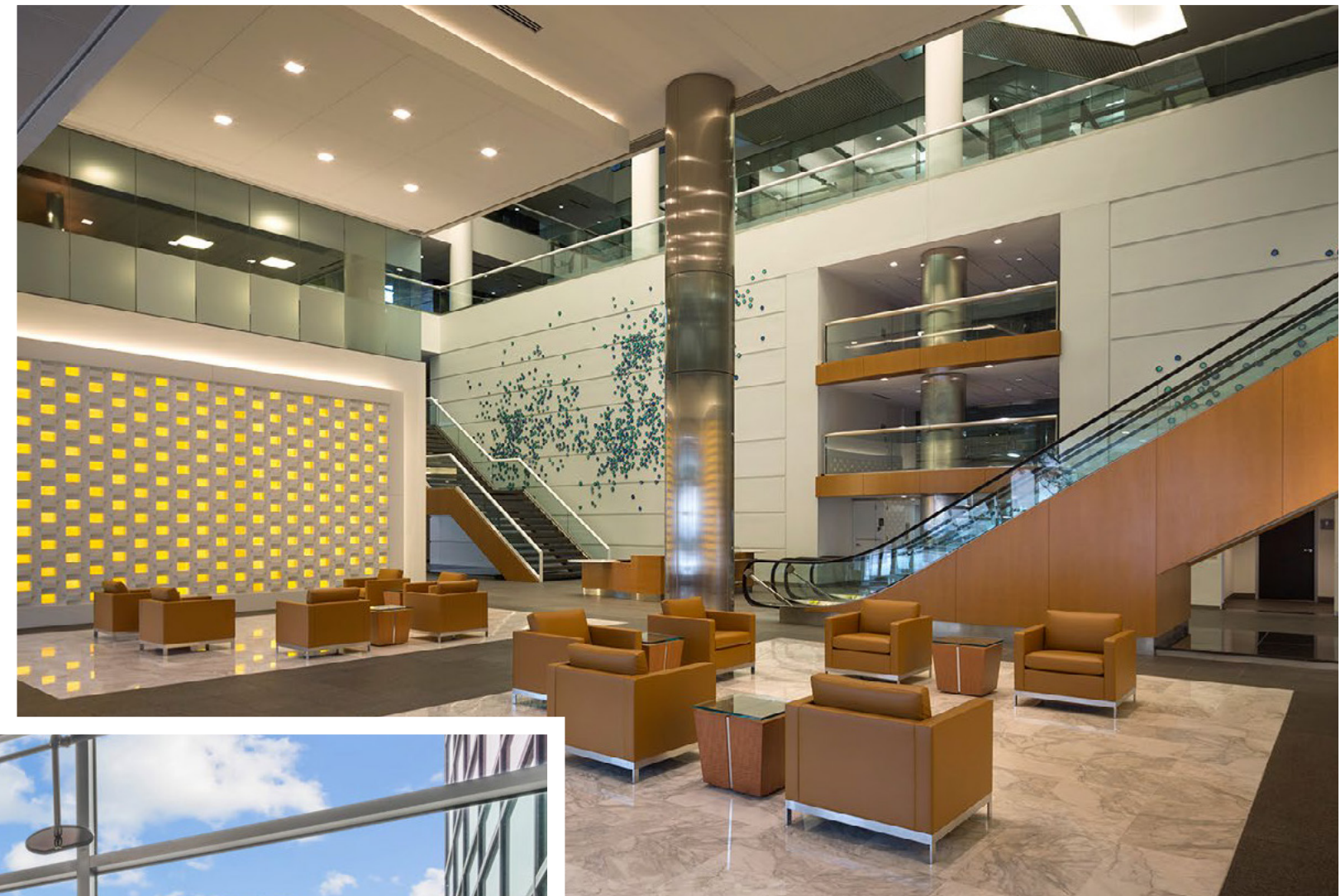
STOCKDALE  
CAPITAL PARTNERS



# Houston's Most Tech Forward Building

In the heart of Greenway Plaza stands Twenty Greenway, a landmark building with distinctive stair-step architecture. This building is designed for the future of work, catering to innovative industries like finance, technology, architecture, and engineering. Twenty Greenway provides enhanced infrastructure, adaptive workspaces, and curated amenities to support tenant success.

## Certifications



## Designed for the Future of Work

- Large, flexible floor plates
- A contemporary lobby with modern artwork and inviting seating
- Full suite of amenities include conferencing, fitness, gameroom and deli
- Abundant parking for dense users
- Superior Greenway Plaza location with a 90 walk score



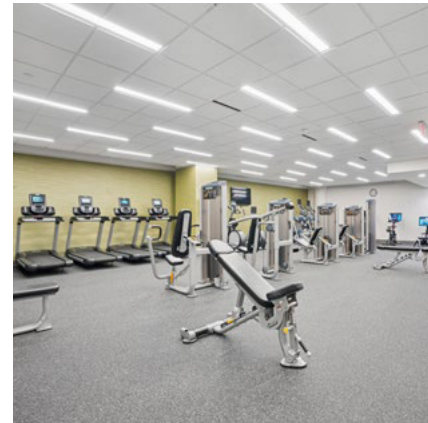
## Food

On-site deli serving lunch, grab and go, and catering



## Health

Fitness center and yoga room

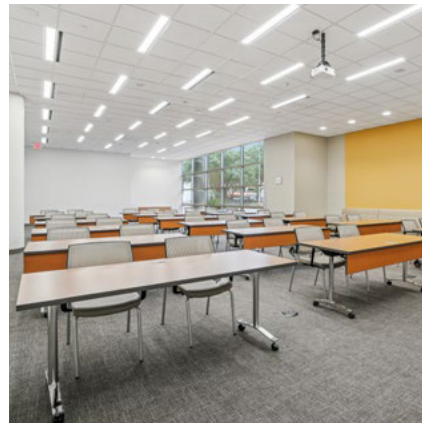


# The Amenities



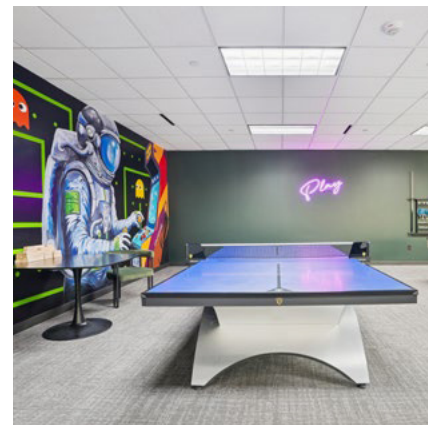
## Meet

Flexible conferencing and training facilities



## Games

Collaborative game room and tenant lounge



## Park

Unlimited Parking for dense users



## Your Business, Always Powered



Large floor plates for high density users-



Four back-up generators with capacity for tenant tie-in



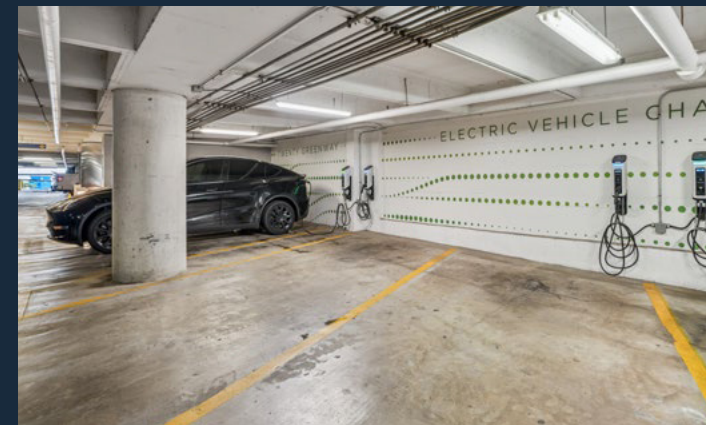
The first major stop off the AT&T switching station on WesleyanRe-



dundant power feeds and power back up via UPS battery



EV charging stations



# World-class firms converge and thrive



MUSEUM DISTRICT

THE MEDICAL CENTER

WEST UNIVERSITY



Eunice

LIFE TIME



RICHMOND AVE



**An address convenient for your employees**

Positioned in one of Houston's most dynamic professional corridors, Greenway Plaza, this location offers immediate access to an abundance of retail, key business districts, and transportation networks.

Within One Mile

<b>35+</b> Restaurants	<b>10+</b> Fitness	<b>5+</b> Grocery
---------------------------	-----------------------	----------------------



# STOCKDALE

CAPITAL PARTNERS

Stockdale Capital Partners is a vertically integrated real estate investment firm headquartered in Los Angeles, CA with a 30+ year history of investing in commercial real estate across multiple asset classes throughout the Western U.S. The firm currently manages approximately \$3 billion in gross assets under management.

Asset Value Approximately

**+3B**

Management Of

**3M SF**

Years of Service

**30+**



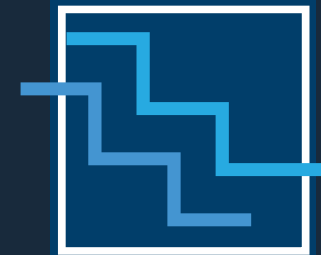
## LEASING INFORMATION

**Tyler Garrett**

Executive Managing Director  
+1 713 425 1802  
tyler.garrett@jll.com

**Jack Russo**

Executive Vice President  
+1 713 425 1808  
jack.russo@jll.com



TWENTY  
GREENWAY



Although information has been obtained from sources deemed reliable, neither Owner nor JLL makes any guarantees, warranties or representations, express or implied, as to the completeness or accuracy as to the information contained herein. Any projections, opinions, assumptions or estimates used are for example only. There may be differences between projected and actual results, and those differences may be material. The Property may be withdrawn without notice. Neither Owner nor JLL accepts any liability for any loss or damage suffered by any party resulting from reliance on this information. If the recipient of this information has signed a confidentiality agreement regarding this matter, this information is subject to the terms of that agreement. ©2025 Jones Lang LaSalle Brokerage, Inc. All rights reserved.