

THE EDISON

TE

THE EDISON

7910 MICROSOFT WAY

±15K SF AVAILABLE

THE EDISON



A CREATIVE AND COLLABORATIVE WORKPLACE.

BRAND NEW CONSTRUCTION

BUILDING WITH STATE-OF-THE-ART MODERN BUILDING SYSTEMS.

INCREDIBLY EFFICIENT

FLOOR PLATES WITH FLOOR TO CEILING GLASS.

EXPANSIVE ACTIVATED

OUTDOOR SPACE WITH CURATED FOOD TRUCK PROGRAM.

PARKING RATIO

5.6 / 1,000.

HIGH END FITNESS

FEATURING PELOTONS & LULULEMON MIRRORS.

CLOSE PROXIMITY

TO AYRSLEY WITH OVER 20+ RESTAURANTS AND RETAIL OFFERINGS.

BUILDING FEATURES

BUILDING SIZE ±124,906 SF

AVAILABLE ±15,249 SF

LOCATION

**ACCESSIBLE
TO EVERYWHERE
YOU NEED
TO GO.**

36
RESTAURANTS

2
INTERSTATES

1
INTERNATIONAL
AIRPORT

DRIVE TIMES

I-77
1 MILE | 3 MINUTES

I-485
2 MILES | 4 MINUTES

AYRSLEY TOWN CENTER
2 MILES | 7 MINUTES

SOUTH CAROLINA
3.5 MILES | 5 MINUTES

**CHARLOTTE DOUGLAS
INTERNATIONAL AIRPORT**
10 MILES | 12 MINUTES



TAKE A CLOSER LOOK AT THE EDISON.

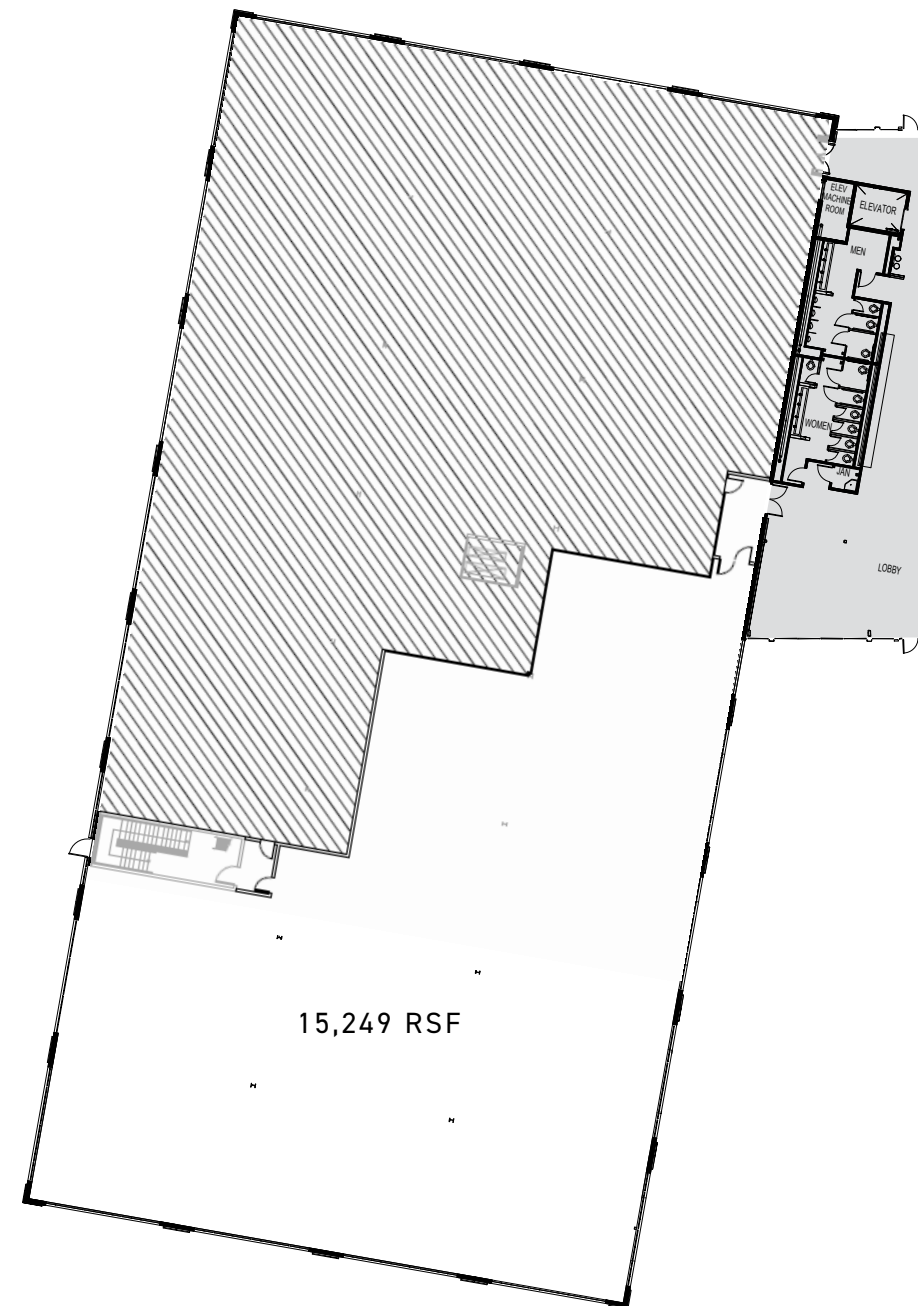
HIGHLY EFFICIENT FLOOR PLATES.

EASILY DIVISIBLE.

PROMINENT BRANDING
OPPORTUNITIES.

OPPORTUNITIES.

SPEC SUITE READY.



AVAILABILITY

DIVISIBLE FROM

15,249 RSF



HIGH CEILINGS.

PUBLIC SPACES.

MODERN DESIGN.

NATURAL LIGHT.



CURATED

FOOD TRUCK

PROGRAM.



THE EDISON

TE

KARAH TANNEBERGER
704.607.8799
karah.tanneberger@jll.com

ELIZA GORDON
843.452.7727
eliza.gordon@jll.com

MEREDITH BALL
704.519.5843
meredith.ball@jll.com



Although information has been obtained from sources deemed reliable, neither Owner nor JLL makes any guarantees, warranties or representations, express or implied, as to the completeness or accuracy as to the information contained herein. Any projections, opinions, assumptions or estimates used are for example only. There may be differences between projected and actual results, and those differences may be material. The Property may be withdrawn without notice. Neither Owner nor JLL accepts any liability for any loss or damage suffered by any party resulting from reliance on this information. If the recipient of this information has signed a confidentiality agreement regarding this matter, this information is subject to the terms of that agreement. ©2026. Jones Lang LaSalle IP, Inc. All rights reserved.