

For Lease

1010 Euclid Avenue
Cleveland, OH



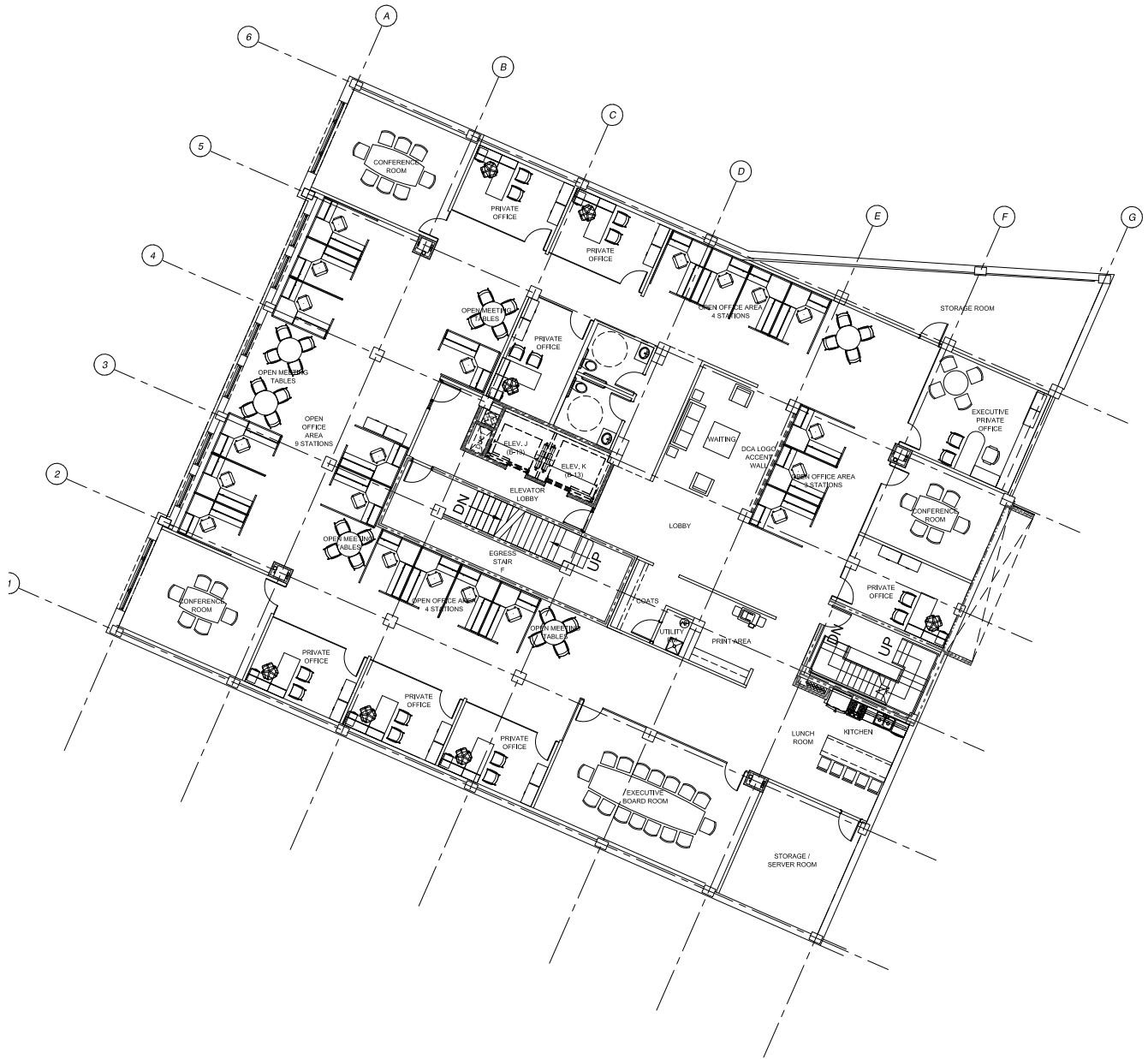
**8,701 SF
Available**

Prime Downtown Office Space For Lease

Highlights

- 8,701 SF office space available on the 3rd Floor
- Lease Rate: \$19.75/ SF MG
- A mix of private offices, conference area, and open areas
- Elevator and stair access off of Euclid Avenue
- Billboard signage opportunities
- Parking available at Cuyahoga County HQ garage
- The building is connected to The 9 (a Downtown luxury hotel, apartments & restaurants) along with Heinen's Grocery Store
- Tenants have free access to the fitness center at The 9
- Central downtown location within walking distance to East 4th, Gateway District, and Playhouse Square

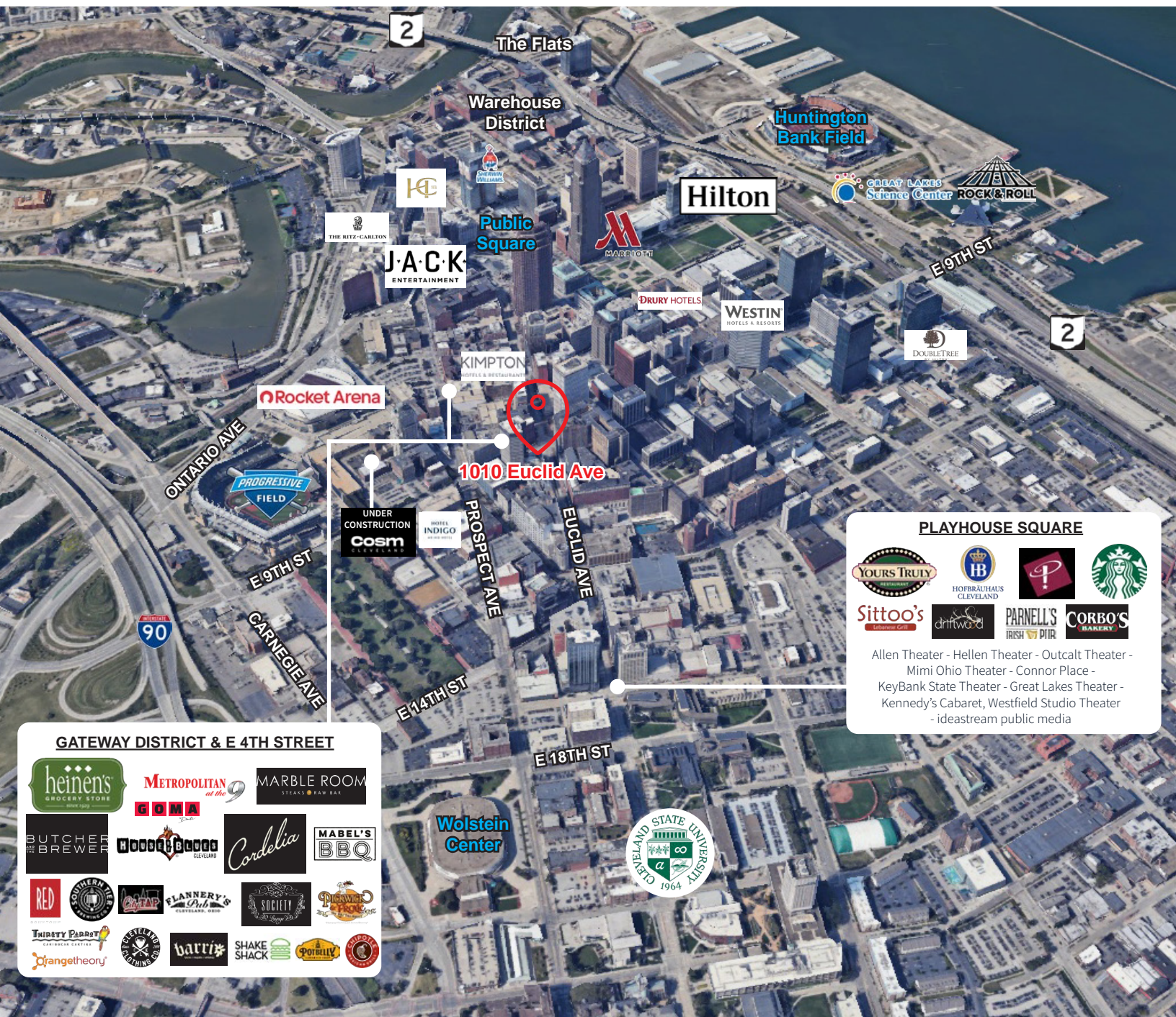






Parking Location





260
Restaurants & Bars

3
Major Sports Teams

21K
Downtown Residents

40M
Visitors Each Year

JLL

Kristy Peters, SIOR
Senior Vice President
kristy.peters@jll.com
+1 (216) 937 4375

Amy Bradford
Vice President
amy.bradford@jll.com
+1 (216) 912 4508