



 **CENTER  
650**

**650 SMITHFIELD STREET**



# INTRODUCING CENTER650

Center650 is the epitome of modern office space in Pittsburgh's Central Business District. Located at 650 Smithfield Street and owned by Douglas Development, this premier property offers a newly renovated lobby, new cutting-edge elevators, and an impressive array of amenities.

From the state-of-the-art fitness center to versatile conferencing facilities and move-in ready spec suites, Center650 is designed to elevate your work experience. With exceptional city views and prime downtown access, it's more than just an office — it's a hub for innovation and success in the heart of Pittsburgh.

## BUILDING OVERVIEW

**Address:** 650 Smithfield Street







**Number of floors:** 26

**Building size:** 349K

**Floor plates:** 12,274 - 12,672 SF



## PROPERTY HIGHLIGHTS

-  Exceptional city views
-  Exterior branding opportunities
-  On-site engineers & management
-  Ample parking garages nearby
-  Easy access in & out of Downtown
-  12,274 - 12,672 RSF floor plates

# ON-SITE-AMENITIES

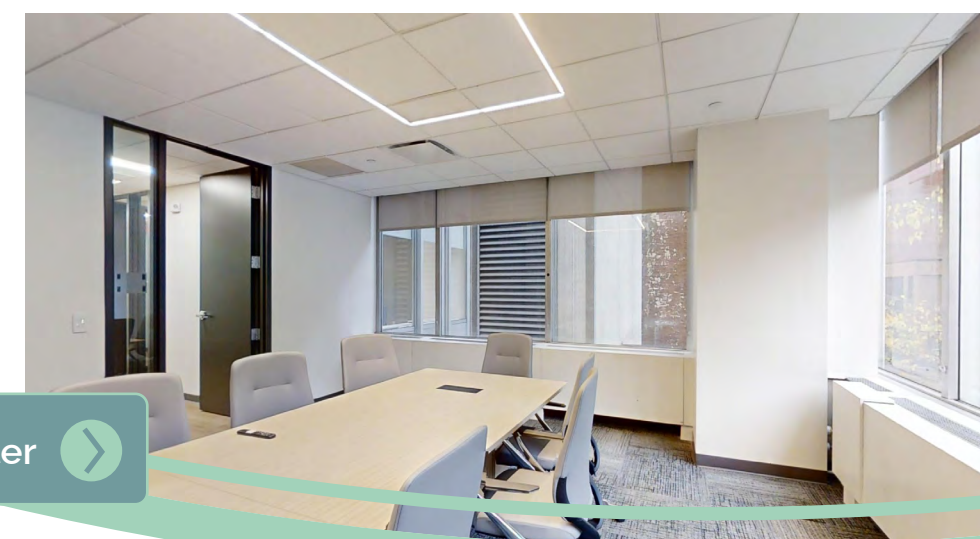
World-Class Fitness Center with Private Fitness Locker Rooms & Showers

Tenant Lounge with Wet Room

Conferencing Center with Training Facility

[Tour the Fitness Center](#)

[Tour the Conference Center](#)



# RETHINKING CENTER650

Under the new ownership of Douglas Development, this building features a renovated lobby, new elevators, a full-service fitness center, locker rooms with showers, and a conference facility with a wet bar pre-function area. Move-in-ready spec suites are now available throughout the building. Experience the ultimate in convenience and modern amenities at Center650.



## CAPITAL IMPROVEMENTS



Elegant, fully renovated lobby featuring cutting-edge new elevator systems



State-of-the-art fitness center with modern equipment and locker rooms



Inviting tenant lounge with a fully stocked kitchenette



Versatile conferencing center with integrated training facility



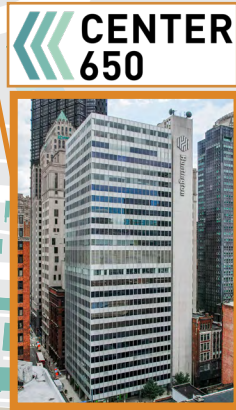
Move-in ready plug & play space & customizable spec suites available for immediate occupancy



# EVERYTHING YOU NEED AT YOUR DOORSTEP


## LEGEND

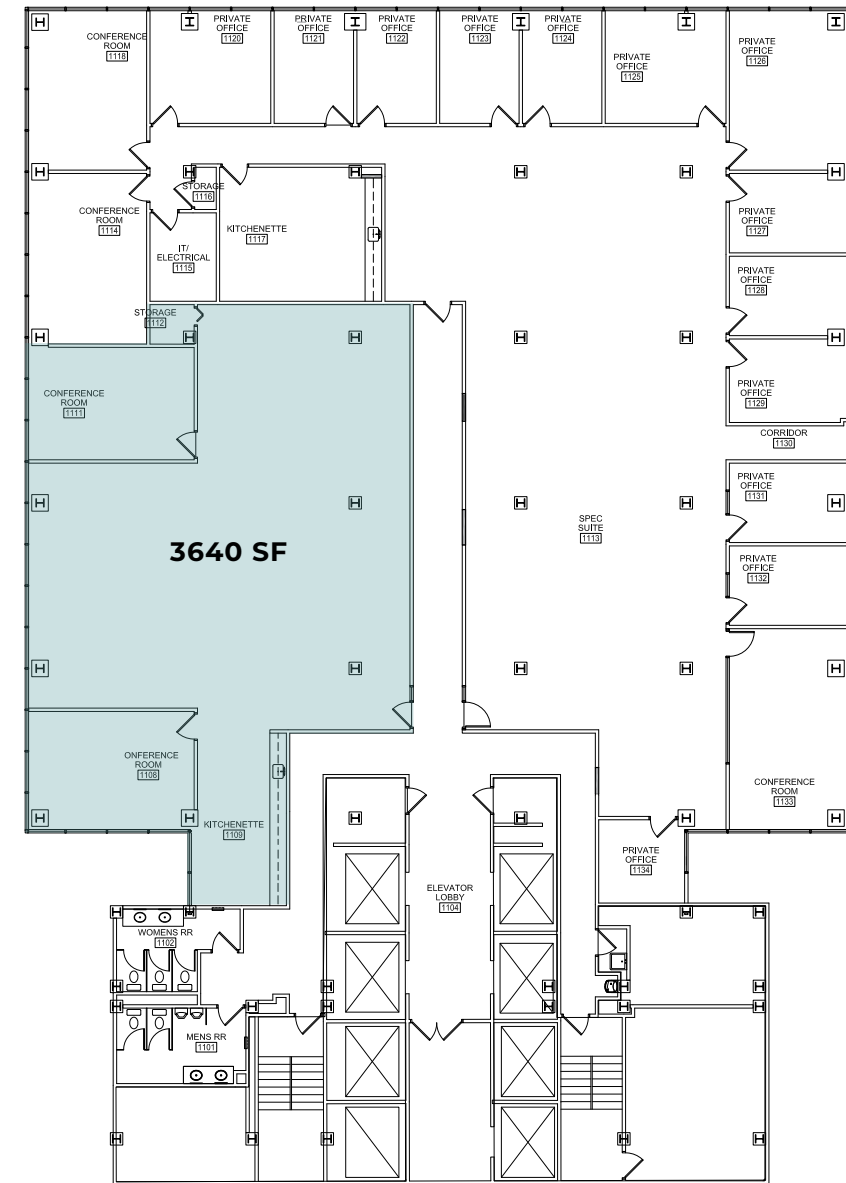
- Center650
- Office
- Residential
- Hotel
- Retail /Entertainment
- Parking
- Industrial
- Public/Private Institutions



# SUITE 1110 | 3640 RSF

## FLOOR 11

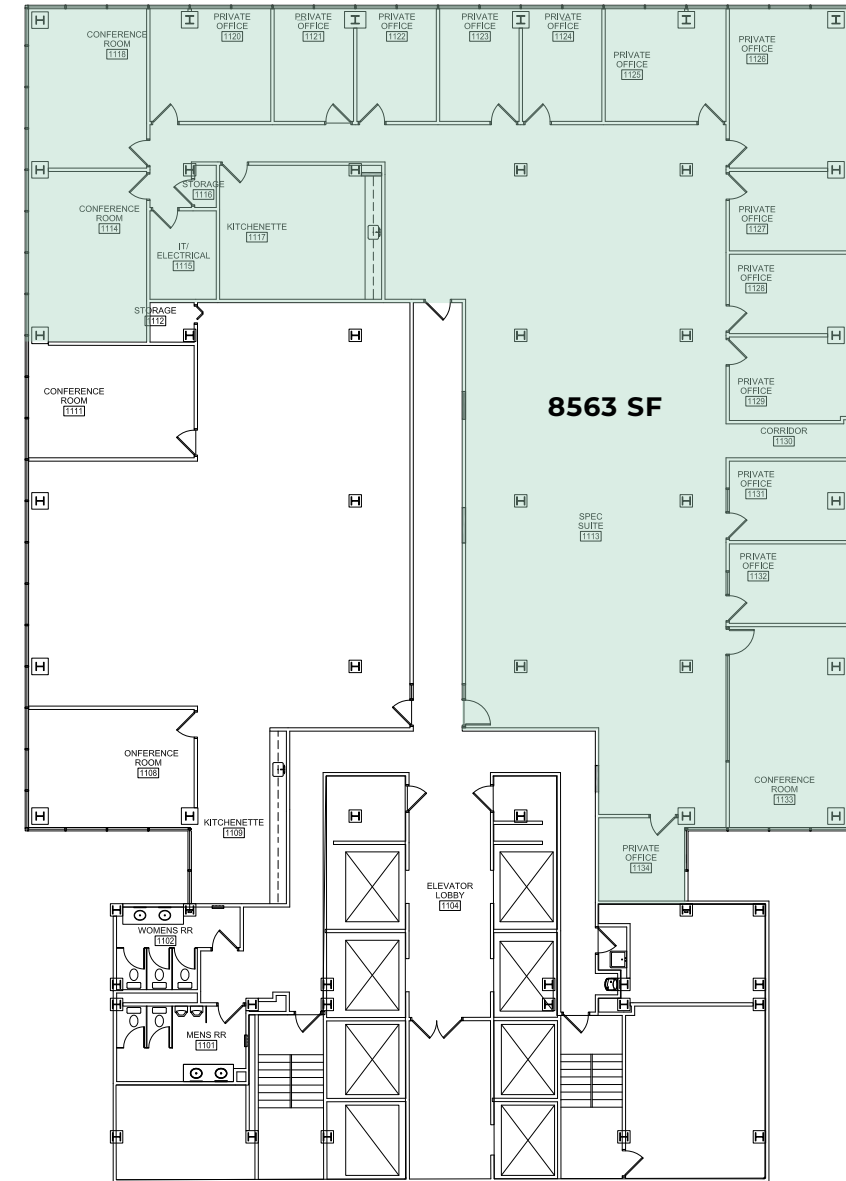
Take a Virtual Tour 



# SUITE 1113 | 8563 RSF

## FLOOR 11

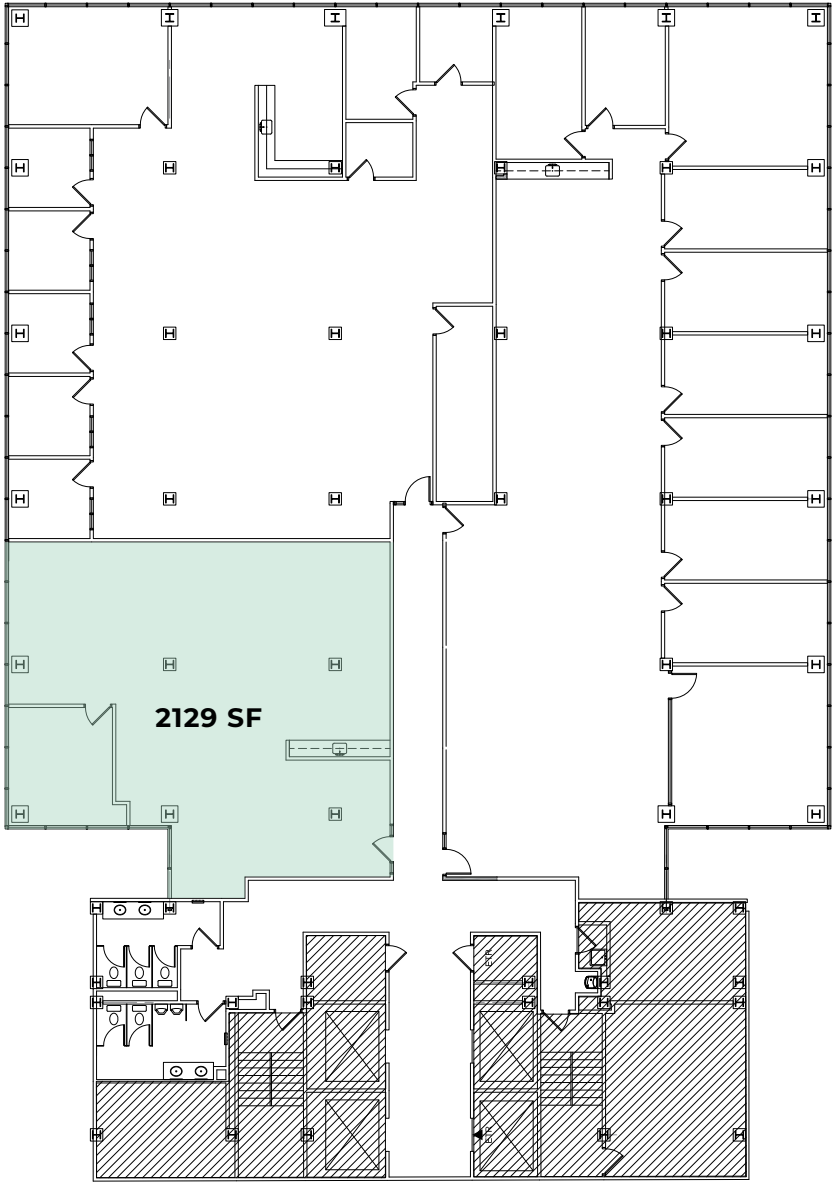
Take a Virtual Tour 



# SUITE 1806 | 2129 RSF

# FLOOR 18

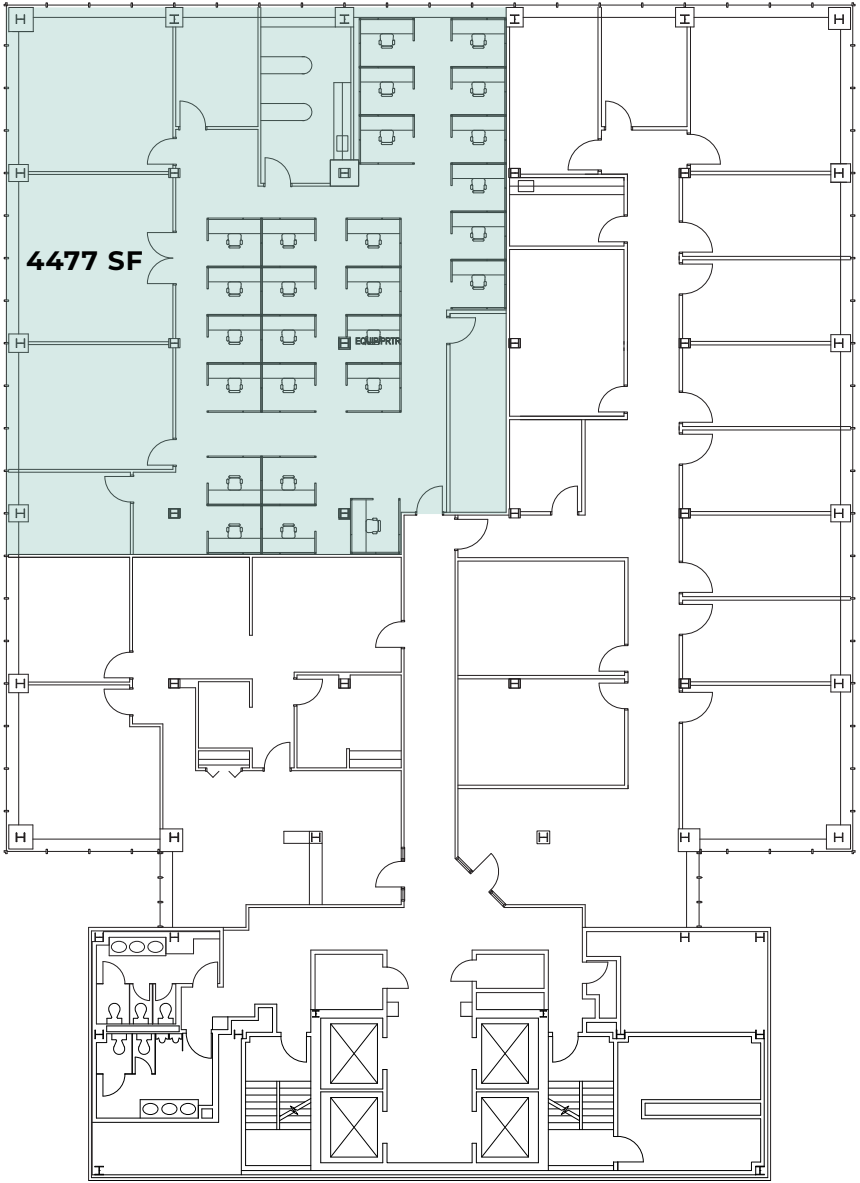
Take a Virtual Tour 



# SUITE 1810 | 4477 RSF

# FLOOR 18

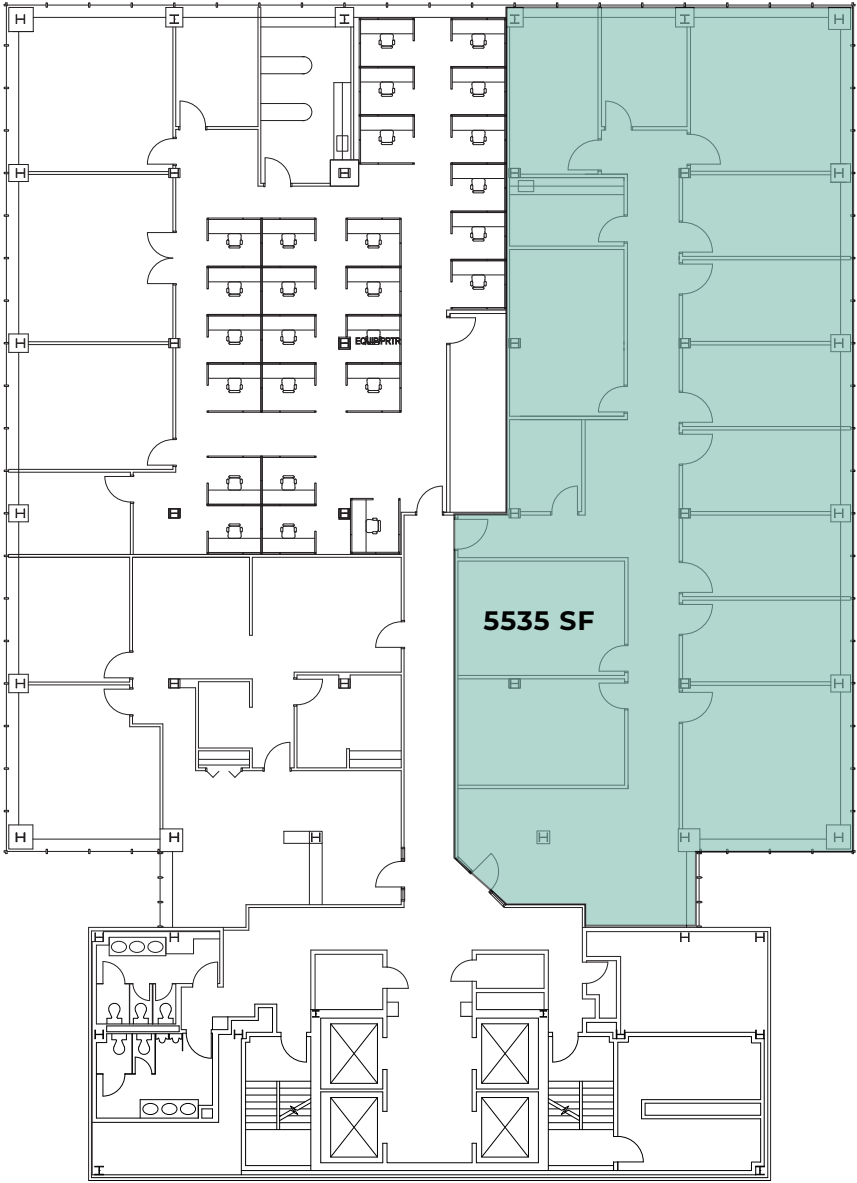
[Take a Virtual Tour](#) 



# SUITE 1821 | 5535 RSF

# FLOOR 18

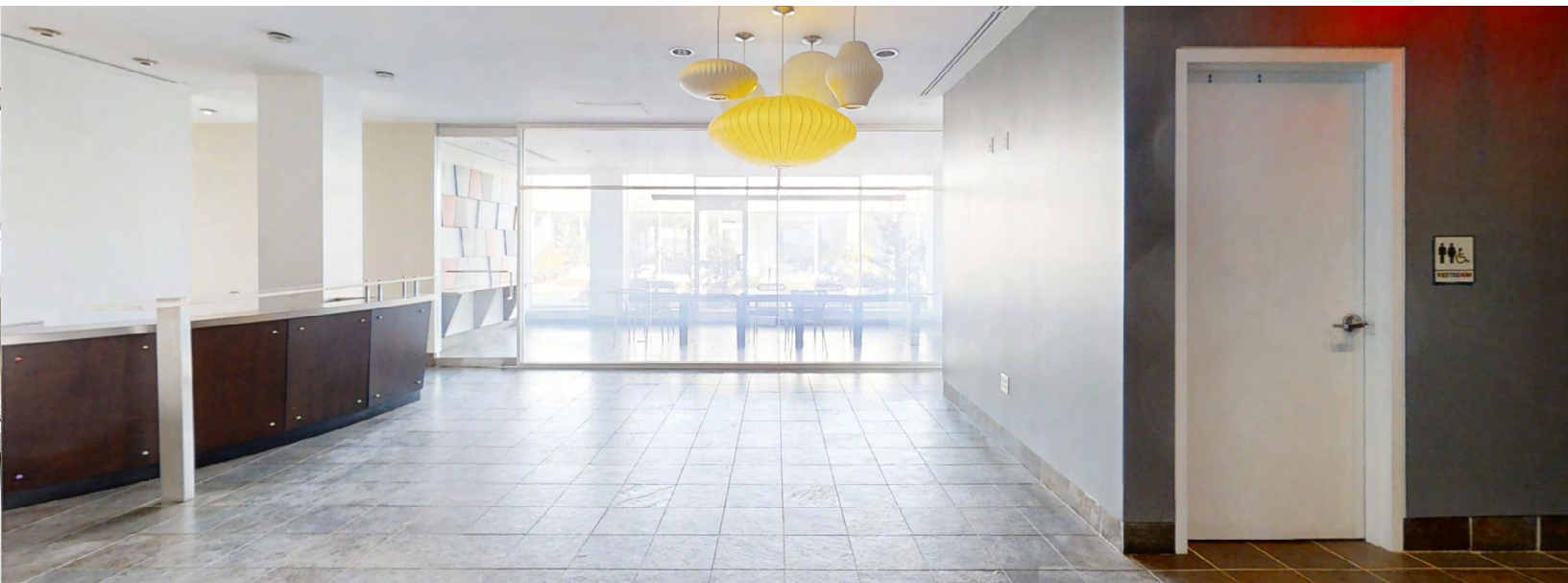
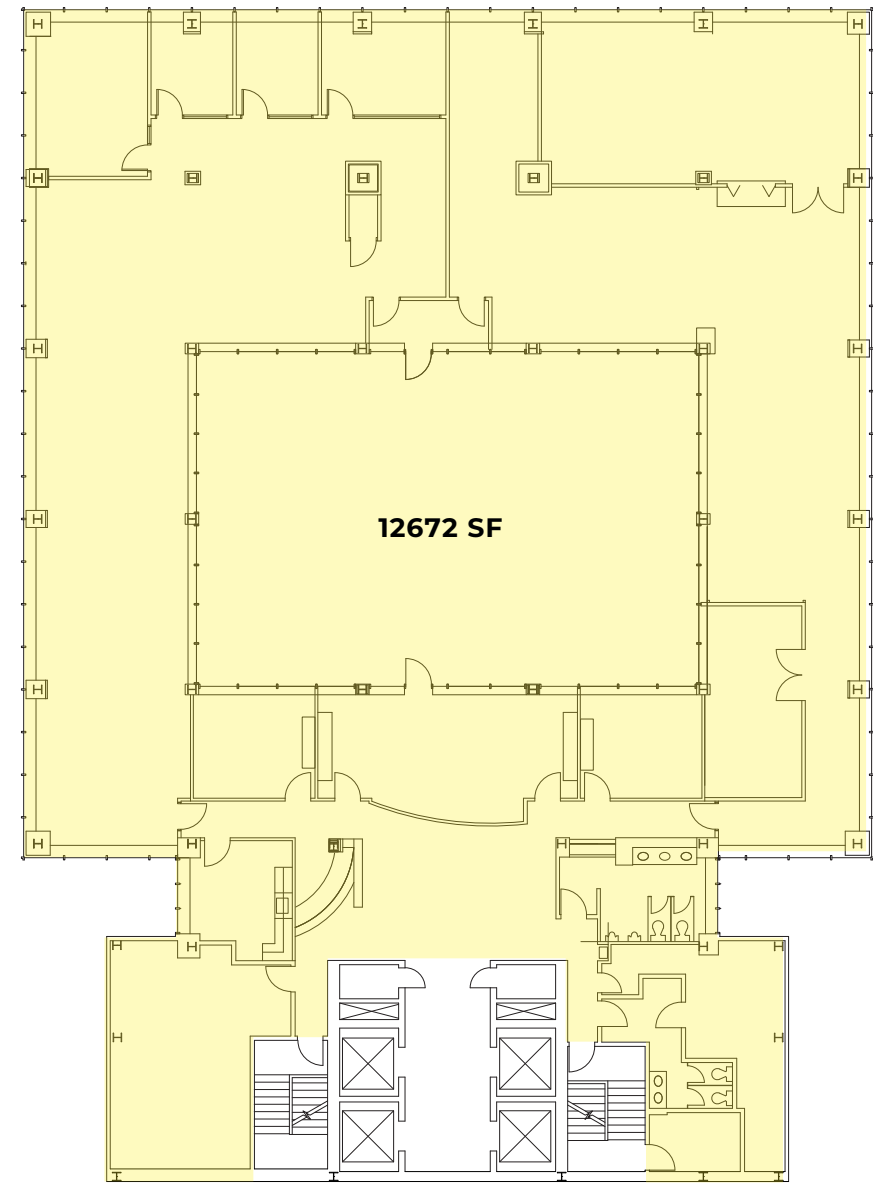
Take a Virtual Tour 



# FLOOR 26 | 12672 RSF

# FLOOR 26

Take a Virtual Tour 





**JASON STEWART**  
+1 412 208 1400  
jason.stewart@jll.com

**JESSE AINSMAN**  
+1 412 208 1400  
jesse.ainsman@jll.com

 **CENTER  
650**

Although information has been obtained from sources deemed reliable, neither Owner nor JLL makes any guarantees, warranties or representations, express or implied, as to the completeness or accuracy as to the information contained herein. Any projections, opinions, assumptions or estimates used are for example only. There may be differences between projected and actual results, and those differences may be material. The Property may be withdrawn without notice. Neither Owner nor JLL accepts any liability for any loss or damage suffered by any party resulting from reliance on this information. If the recipient of this information has signed a confidentiality agreement regarding this matter, this information is subject to the terms of that agreement. ©2025 Jones Lang LaSalle IP, Inc. All rights reserved.

