



Available

The Plaza at West Lakes
6750 Westown Parkway
West Des Moines, IA 50266

The Plaza at West Lakes – Office/Retail Space

Availability: Suite 220: 3,661 RSF

Rate: \$18.00/RSF NNN

Est. OPEX: \$11.93/RSF

Property information:

- Building signage available
- Ample parking
- Quality finishes with Google fiber internet available
- Neighboring tenants include Wintrust Mortgage, Farm Bureau, Aesthetic Collective, Dommer Massage, Salon Suites, Northern Lights Pizza, The UPS Store, West Lakes Salon, and Pickleman's
- Total building size: 28,673 SF

Thomas Edwards
Associate

+1 515 802 4684

thomas.edwards@jll.com

Nick Anderson
Associate

+1 515 729 6015

nicholas.anderson@jll.com

Marcus R. Pitts, CCIM, SIOR
Executive Managing Director

+1 515 556 4727

marcus.pitts@jll.com

jll.com/des-moines



Exterior images



Floor plan



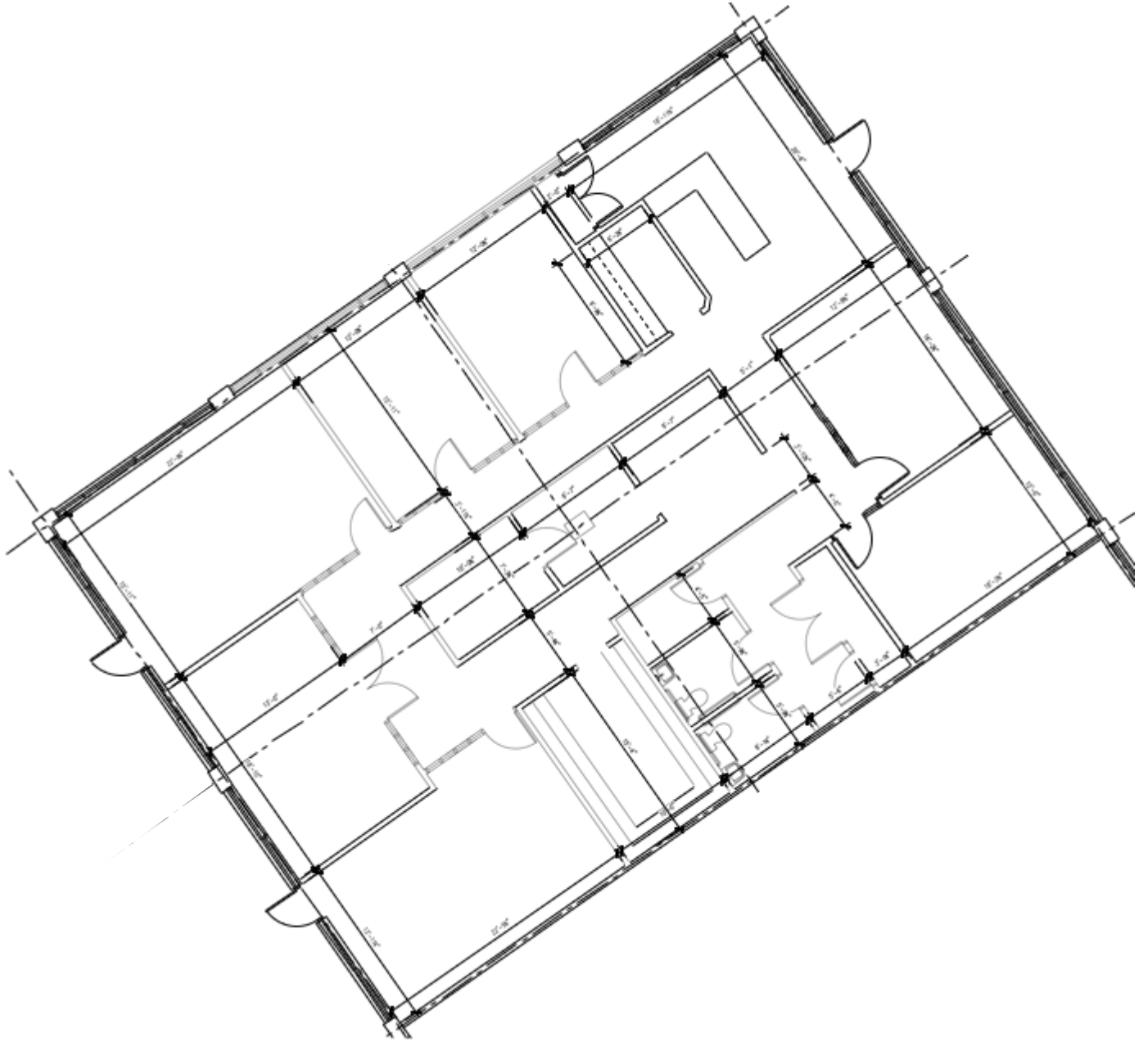
Individual floor plans

Availability:

- Suite 220: 3,661 RSF

Rate: \$18.00/SF NNN

Estimated OPEX: \$11.93/SF



Suite 220
3,661 RSF

Location map



Demographics

	1 Mile	3 Miles	5 Miles
Population	5,394	75,138	161,868
Households	2,369	30,904	66,081
Average HH Income	\$163,164	\$138,869	\$137,939

Traffic counts

Westown Parkway	9,000 VPD
Interstate 80/35	91,600 VPD
Jordan Creek Parkway	14,800 VPD

Contact

Thomas Edwards

Associate

+1 515 802 4684

thomas.edwards@jll.com

Nick Anderson

Associate

+1 515 729 6015

nicholas.anderson@jll.com

Marcus R. Pitts, CCIM, SIOR

Executive Managing Director

+1 515 556 4727

marcus.pitts@jll.com