



For sale

833 Middlefield Road | Scarborough, ON
Freestanding Industrial Facility | 58,392 SF

Property Highlights



Corner Property
with great exposure



Easy access to
Highways 401 & 407



Freestanding
Industrial Facility



Truck Level &
Internal Truck Door

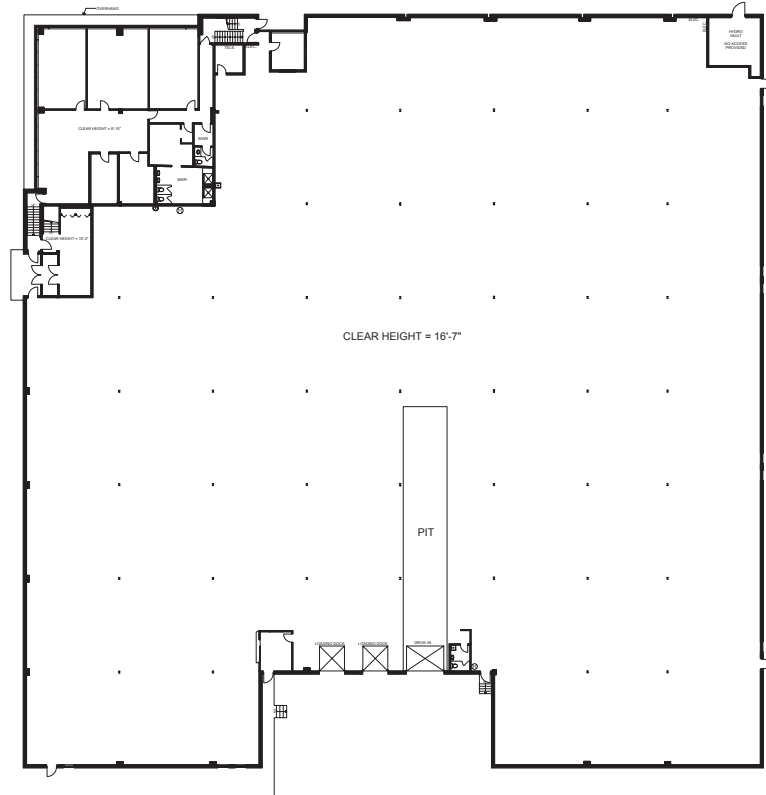
Property Features

Total Size	58,392 SF
Main Office Area	3,852 SF
Lower Level Office Area	4,052 SF
Industrial Area	50,488 SF
Lot Size	2.51 Acres
Clear Height	16' 7"
Zoning	Industrial
Shipping	2 Truck Level & 1 Internal Truck Level Door
Heating	Gas Forced Air Open
Services	Municipal water and Sanitary sewers
Property Taxes	\$97,136.50 (2025)
Asking Price	\$19,500,000
Comments	<ul style="list-style-type: none"> • Freestanding industrial facility with main road exposure • First time offered for sale • Brick and block construction – 1980 • Easy Highway 401 & 407 access • Ability to add drive-in doors • Excellent power supply – 600 AMPS • TTC at doorstep

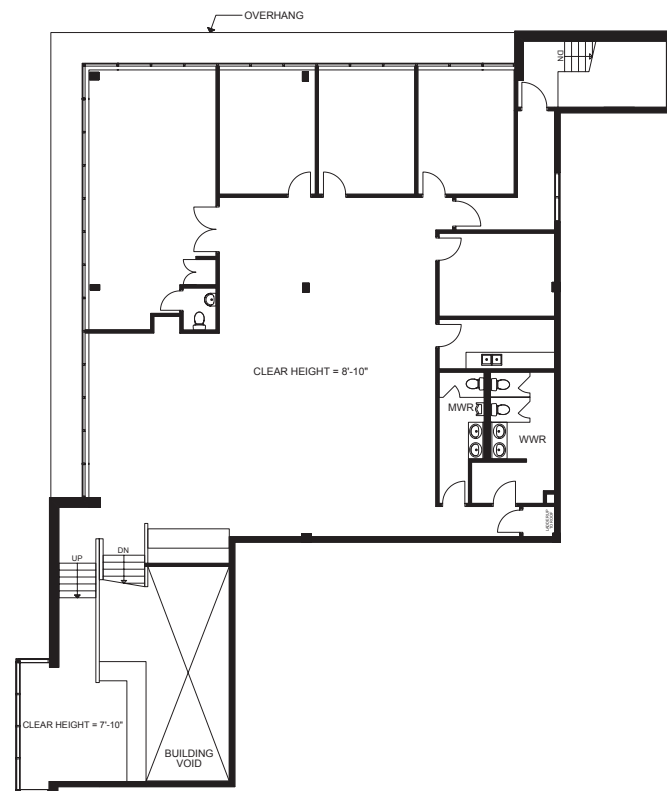


Floor Plan

Ground floor



Office area



Amenities Map



Restaurants & Dining

- 1. McDonald's
- 2. Tim Hortons
- 3. Samosa King
- 4. Congee Queen
- 5. Federick Restaurant
- 6. Noodle Garden
- 7. Mandarin
- 8. Scaddabush

Retail & Shopping

- 1. Pacific Mall
- 2. CF Markville
- 3. CF Fairview Mall
- 4. Bridlewood Mall
- 5. Woodside Square
- 6. First Markham Place
- 7. Walmart
- 8. Canadian Tire
- 9. Costco Wholesale
- 10. Value Village
- 11. Shoppers Drug Mart

Grocery & Supermarkets

- 1. NoFrills (Dave & Annette's)
- 2. Asia Food Mart
- 3. T&T Supermarket

Banking & Financial Services

- 1. TD Canada Trust Bank
- 2. BMO Bank of Montreal
- 3. RBC Royal Bank
- 4. Scotiabank

Gas Stations

- 1. Petro-Canada Gas Station
- 2. Esso Gas Station
- 3. Shell Gas Station

Fitness & Gyms

- 1. Planet Fitness
- 2. Fit4Less
- 3. Goodlife Fitness

For Sale | 833 Middlefield Road, Scarborough, ON



Corner property at Middlefield Rd & Newmill Gate



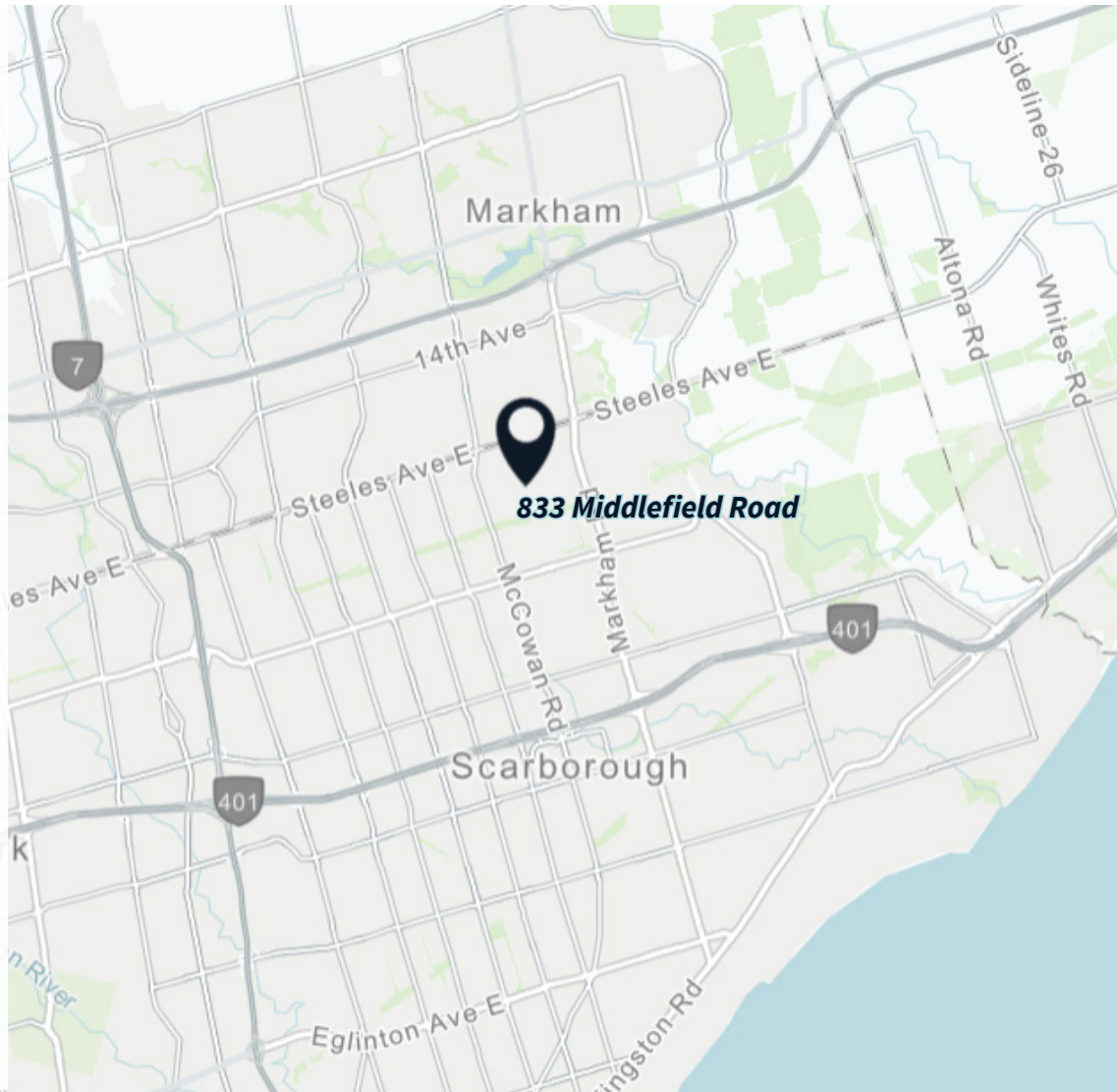
TTC at door step,



Close proximity to Highways 401 & 407



Many nearby amenities



For more information, please contact:



Max Smirnis*
Executive Vice President
647 728 0458
max.smirnis@jll.com



Andy Suhr
Vice President
647 728 0482
andy.suhr@jll.com