

600 Cranberry Woods Drive

THE REGION'S PREMIER
SUBURBAN BUSINESS
ADDRESS



600 Cranberry Woods Drive

RAISING THE BAR FOR YOUR FUTURE OFFICE SPACE

Building Details:

- + 106,435 RSF Class A office building
- + State-of-the-art building systems and premium quality construction
- + High glass line ratio throughout provides for abundant natural light
- + Parking ratio of 5 stalls per 1,000 RSF
- + Efficient floor plates with low common area factors
- + 9' finished ceiling height
- + Dramatic two-story lobby atrium
- + Outdoor Patio and seating area
- + On-site property management, building engineers, and day porters

Premium quality design & construction



Dramatic two-story lobby atrium



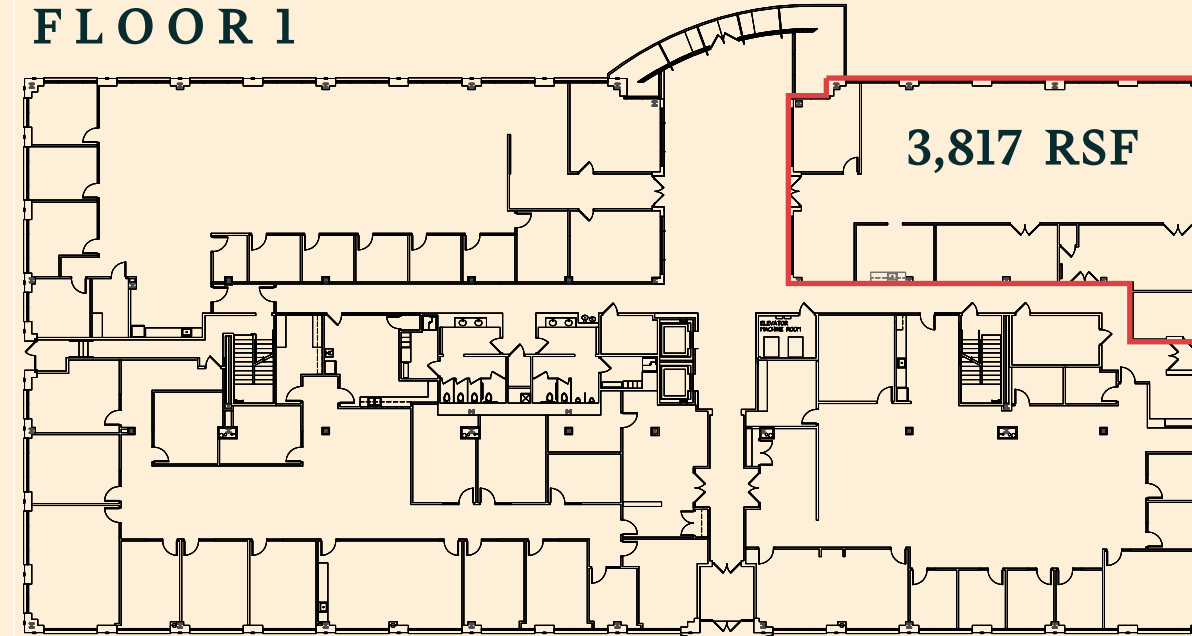
Abundant natural light



Outdoor patio and seating area

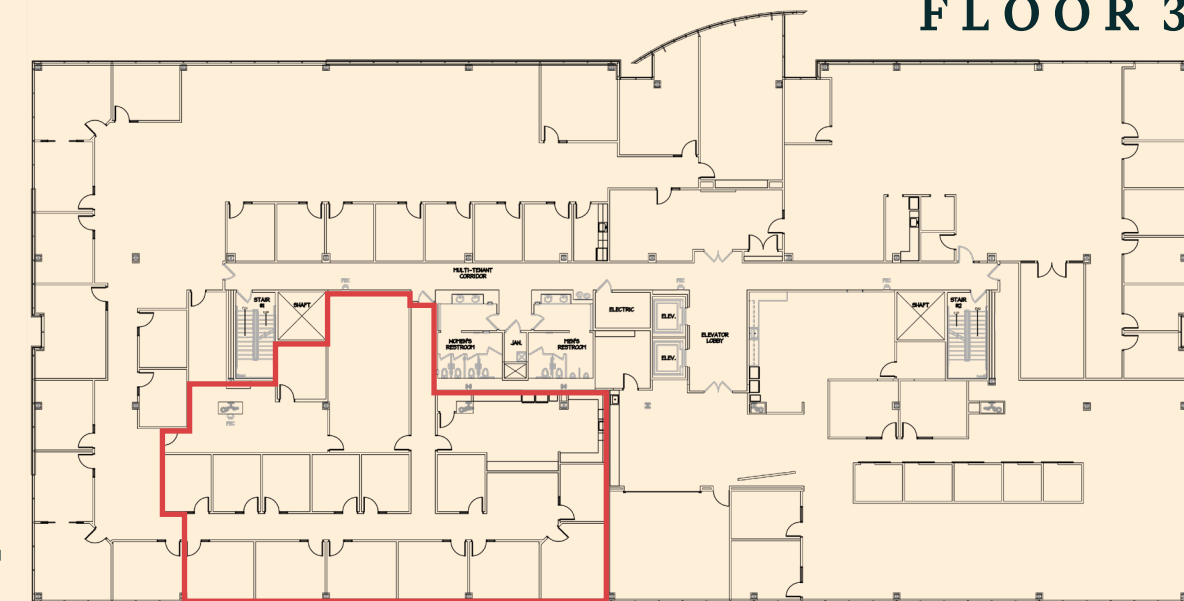
Current Availabilities

FLOOR 1



FLOOR 3

5,261 RSF



Tripp Merchant

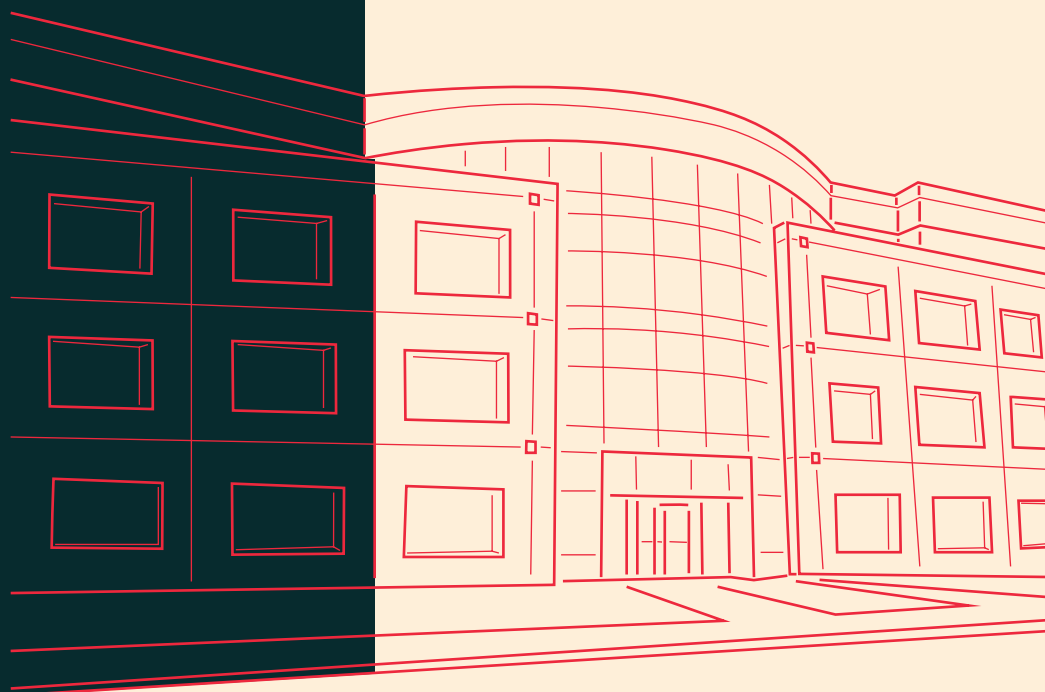
+1 412 208 8231

Tripp.merchant@jll.com

Jesse Ainsman

+1 412 208 8414

Jesse.ainsman@jll.com



Although information has been obtained from sources deemed reliable, JLL does not make any guarantees, warranties or representations, express or implied, as to the completeness or accuracy as to the information contained herein. Any projections, opinions, assumptions or estimates used are for example only. There may be differences between projected and actual results, and those differences may be material. JLL does not accept any liability for any loss or damage suffered by any party resulting from reliance on this information. If the recipient of this information has signed a confidentiality agreement with JLL regarding this matter, this information is subject to the terms of that agreement.
©2023. Jones Lang LaSalle IP, Inc. All rights reserved.