

DOWNTOWN BROOKLYN

15

RETAIL SPACE FOR LEASE AT THE
BASE OF A 314-UNIT BRAND NEW
RESIDENTIAL BUILDING



HANOVER PLACE

Ryan P. Condren

(212) 220-4117

Ryan.Condren@jll.com

George Danut

(212) 220-4121

George.Danut@jll.com





Location

Between Fulton &
Livingston Streets

Retail A

Ground Floor
3,773 SF

Frontage
85' on Livingston Street
59'5" on Hanover Place

Retail B

Ground Floor
1,198 SF

Frontage
71' on Grove Alley

Ceiling Height

22'

Delivery

Immediate

15 HANOVER PLACE

14,000+

New residential units within
a 1 mile radius

1 block

From the Fulton
Street Mall

1 block

From two subway stations,
servicing 

Neighboring co-tenants

CHELSEA PIERS

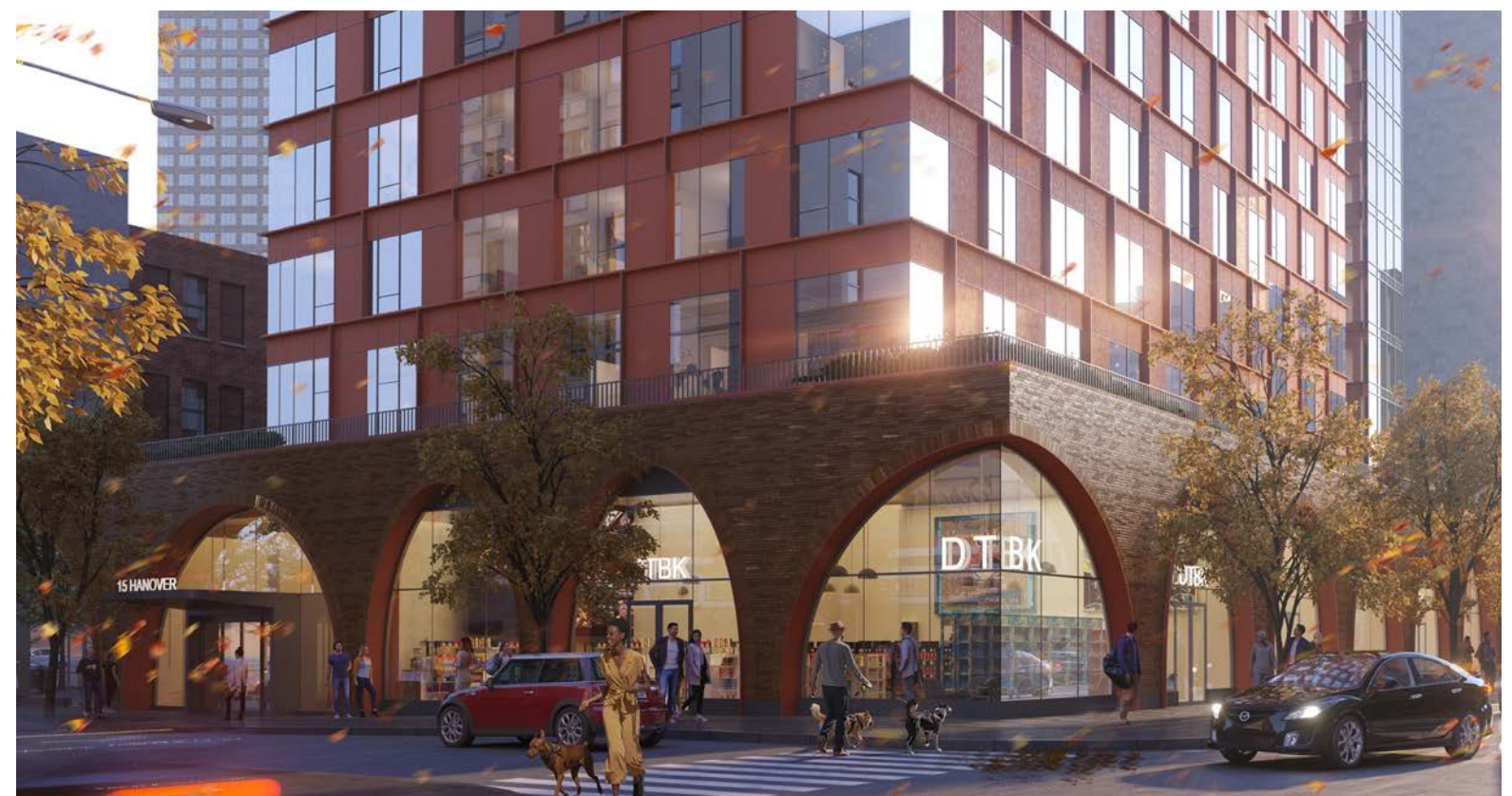
LIFETIME®

GOLFZON

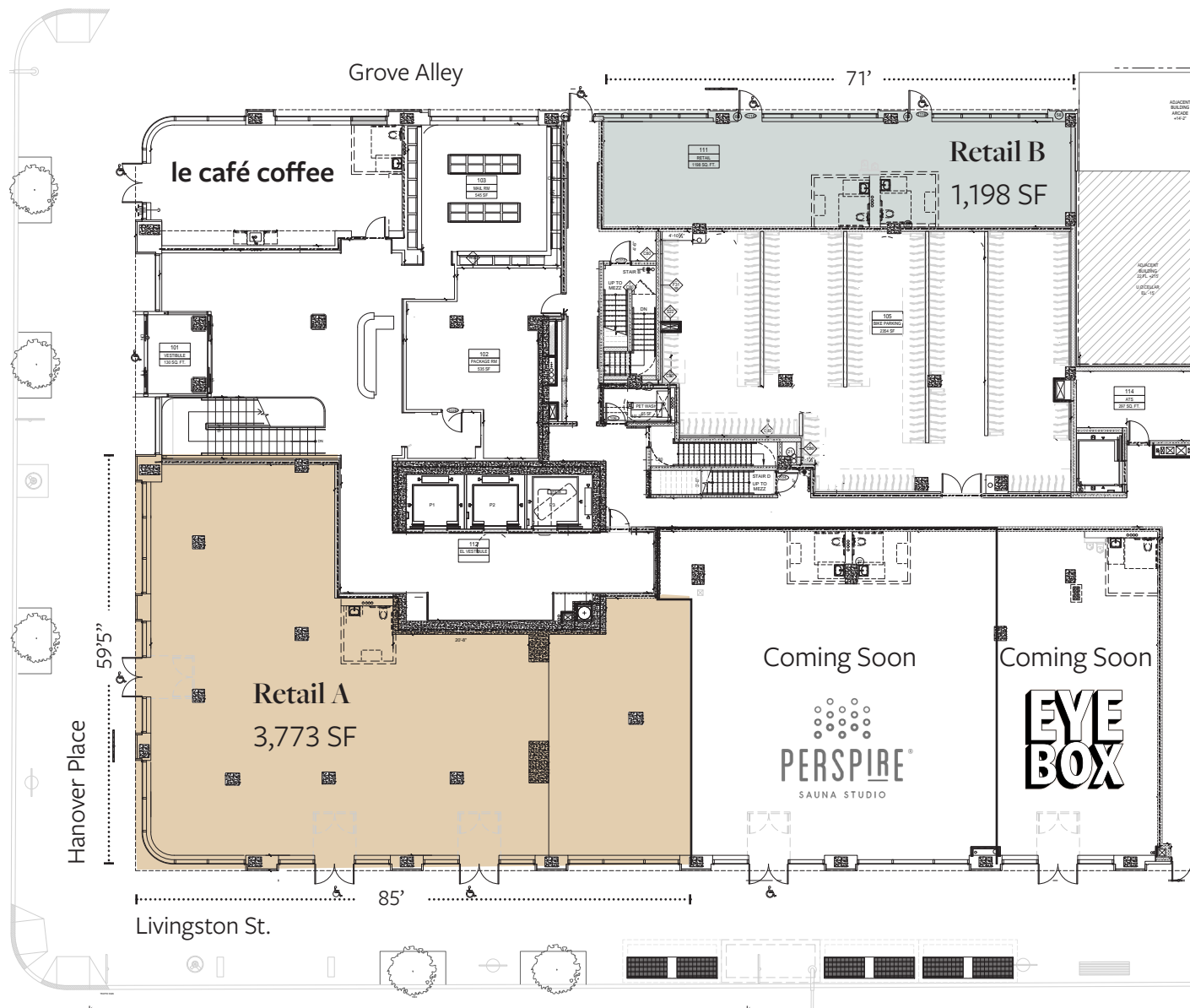
DEVOCIÓN

TRADER
JOE'S

ACE HOTEL



Ground Floor



15 HANOVER PLACE



