



For Lease

Yaletown Mews

1003 — 1083 Cambie Street
Vancouver, BC

 **JLL** SEE A BRIGHTER WAY

THE LOCATION

Yaletown Mews is centrally located at the corner of Cambie Street and Nelson Street in the popular and upbeat Yaletown district within the downtown core of the City of Vancouver.

The building is two blocks from the Yaletown Roundhouse Canada Line Station which reaches destinations of Richmond and the YVR Airport within twenty minutes.

SALIENT DETAILS

BASIC RENT	ADD'L RENT (2026)	SIGNAGE
Contact the listing agents	\$23.78 psf/pa	Building signage opportunity available

AVAILABLE SUITES

SUITE	SF	AVAILABILITY	
200 Nelson	3,898 s.f.	Immediately	DETAILS
1005 Cambie	1,564 s.f.	Immediately	DETAILS
1035 Cambie	5,139 s.f.	Immediately	DETAILS
1081 Cambie	1,827 s.f.	Immediately	DETAILS
1033 Cambie	1,177 s.f.	July 1, 2026	DETAILS



100
Rider's Paradise



92
Very Bikeable



77
Walker's Paradise

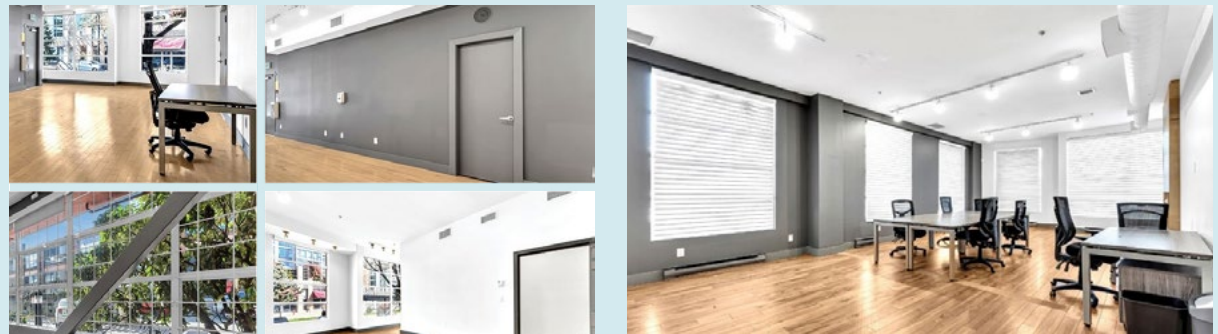
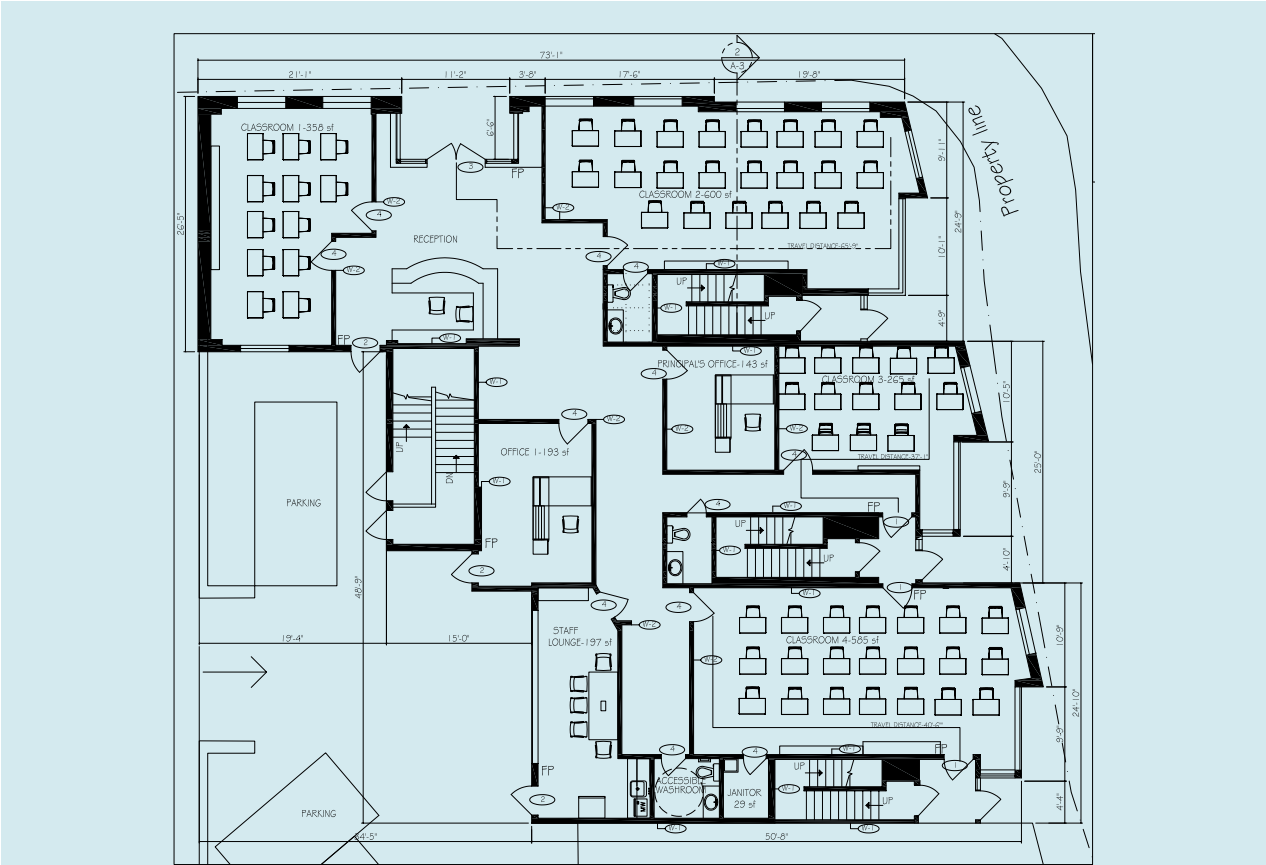


For Lease

200 Nelson

SALIENT DETAILS

SQUARE FOOTAGE 3,898 s.f.
ADDRESS 200 Nelson Street Vancouver, BC
AVAILABILITY Immediately
BASIC RENT Contact listing agents
ADDITIONAL RENT (2026) \$23.78 psf/pa
SUITE COMMENTS Well improved school premises with high ceilings. The premises includes multiple street front entrances/exits, 8 classrooms, administration and lounge areas, private washrooms and reception.



For Lease

1005

Cambie

SALIENT DETAILS

SQUARE FOOTAGE	1,564 s.f.
ADDRESS	1005 Cambie Street Vancouver, BC
AVAILABILITY	Immediately
BASIC RENT	Contact listing agents
ADDITIONAL RENT (2026)	\$23.78 psf/pa
SUITE COMMENTS	3rd floor office premises complete with two offices, boardroom, private patio and open work area. The suite is accessible via elevator or stairs with direct access to Cambie Street. Signage is available.



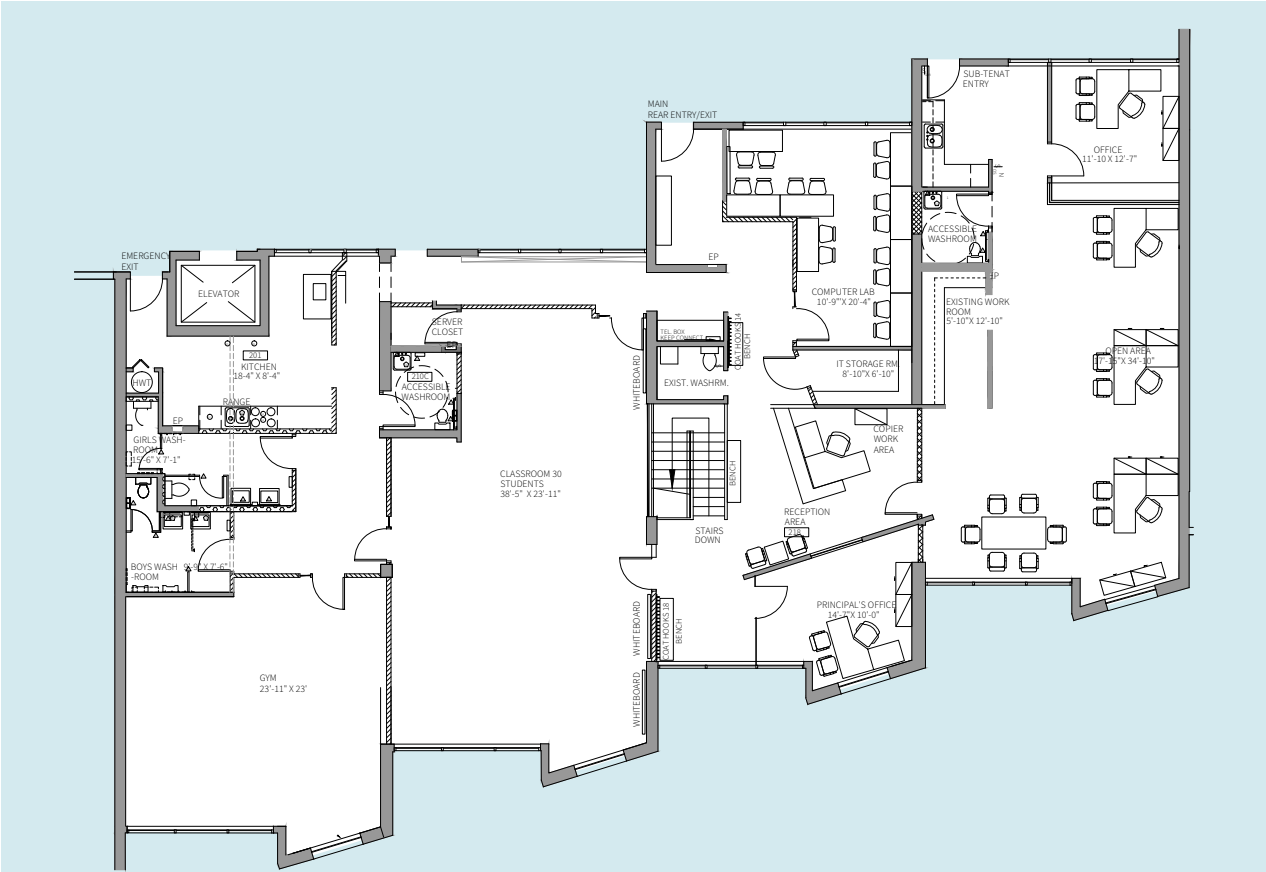
For Lease

1035

Cambie

SALIENT DETAILS

SQUARE FOOTAGE	5,139 s.f.
ADDRESS	1035 Cambie Street Vancouver, BC
AVAILABILITY	Immediately
BASIC RENT	Contact listing agents
ADDITIONAL RENT (2026)	\$23.78 psf/pa
SUITE COMMENTS	Well positioned and unique office premises with high quality improvements in place, mostly open plan with self-contained washrooms, meeting rooms and high ceilings.

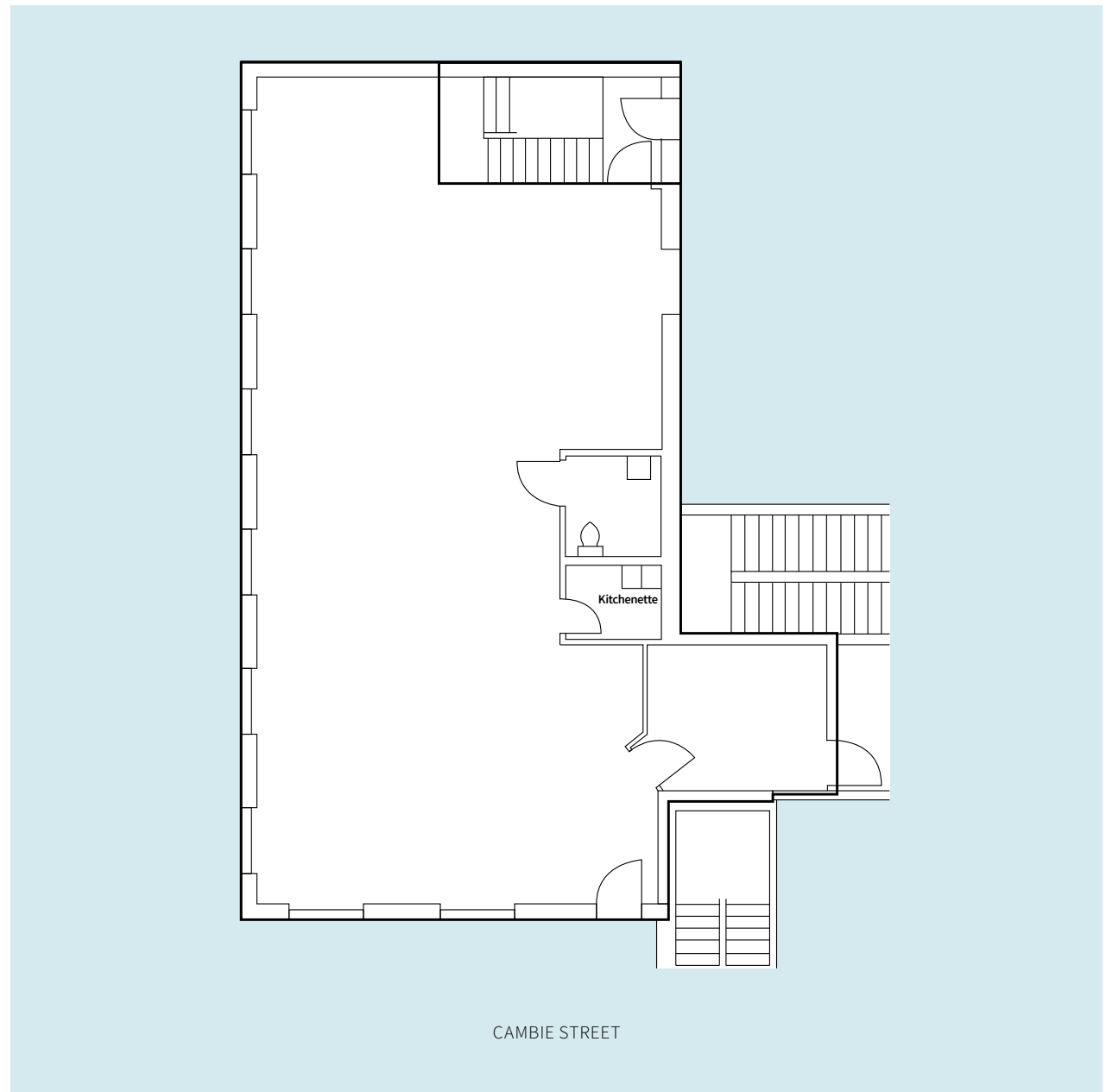


For Lease

1081 Cambie

SALIENT DETAILS

SQUARE FOOTAGE 1,827 s.f.
ADDRESS 1081 Cambie Street Vancouver, BC
AVAILABILITY Immediately
BASIC RENT \$28.00
ADDITIONAL RENT (2026) \$23.78 psf/pa
SUITE COMMENTS Open office/retail space



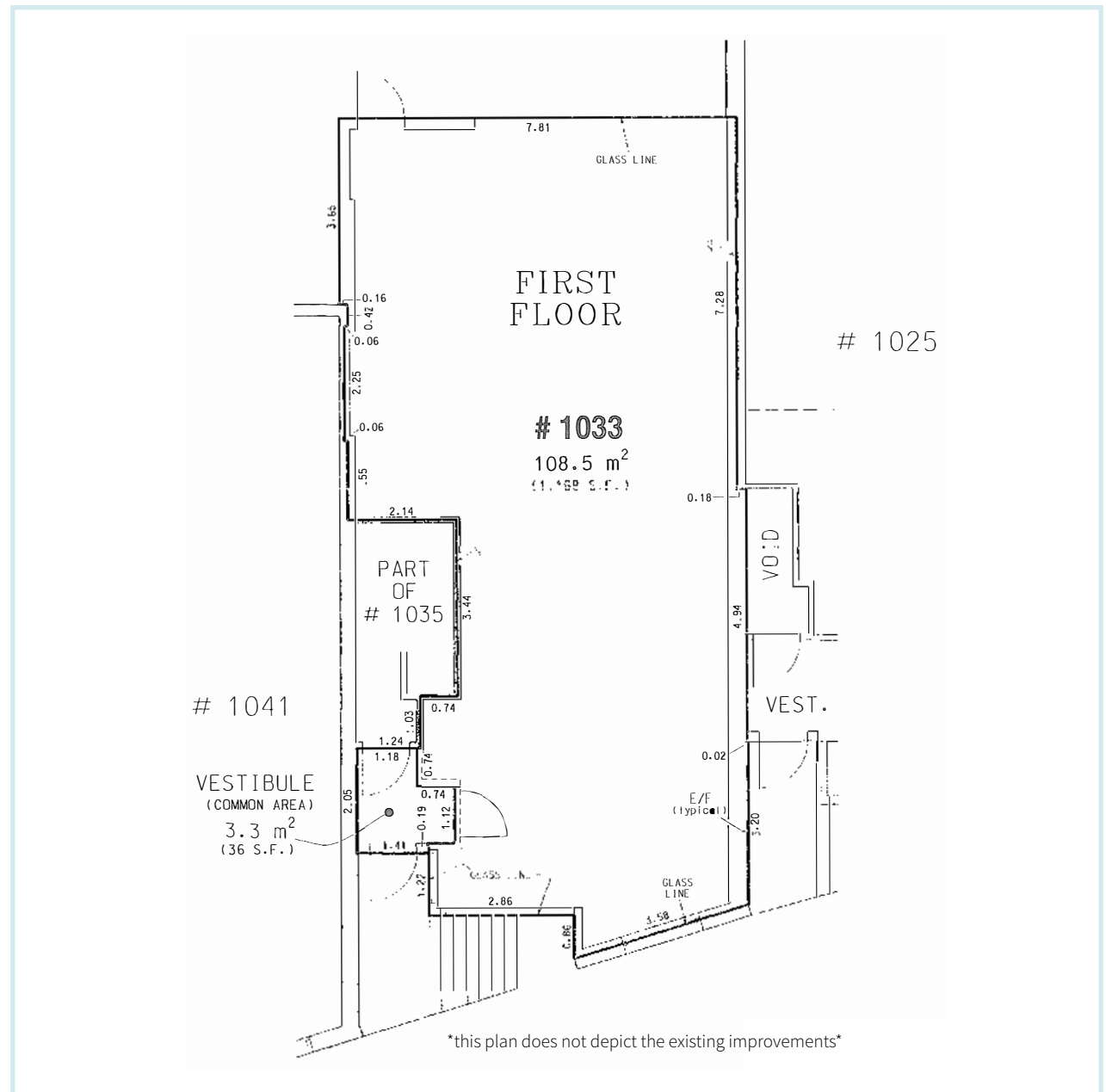
For Lease

1033

Cambie

SALIENT DETAILS

SQUARE FOOTAGE	1,177 s.f.
ADDRESS	1033 Cambie Street Vancouver, BC
AVAILABILITY	July 1, 2026
BASIC RENT	Contact listing agents
ADDITIONAL RENT (2026)	\$23.78 psf/pa
SUITE COMMENTS	*Floorplan is not accurate* The premises has presentable existing improvements with multiple treatment rooms and sinks.



NEARBY AMENITIES

Wellness


1. David Lam Park
2. YVR Cycle Spin Studio
3. Skoah Yaletown
4. Emery Barnes Park
5. YOGA
6. Seawall
7. Kondi Fitness


Food and Fun

8. Earls Kitchen + Bar
9. Cactus Club Cafe
10. The Parlour
11. Yaletown Brew Pub
12. The Flying Pig
13. The Keg Steakhouse + Bar

Necessities

14. Urban Fare
15. Choices Market
16. Nesters Food Market
17. Shoppers Drug Mart


 Expo Line

 Canada Line



Andrew Astles
Associate Vice President
+1 604 363 6673
andrew.astles@jll.com

Mark Trepp*
Executive Vice President
+1 604 998 6035
mark.trepp@jll.com

 **JLL** SEE A BRIGHTER WAY