

For sale

± 0.4 Acres

Retail | Automotive

635 E 1700 S St

Orem, UT 84097



Property Summary

Price	\$1,095,000
Lot Size	± 0.4359 Acres
Building Size	± 575 SF
Type	Retail Automotive
Zoning	C2
Tax ID	19-023-0189

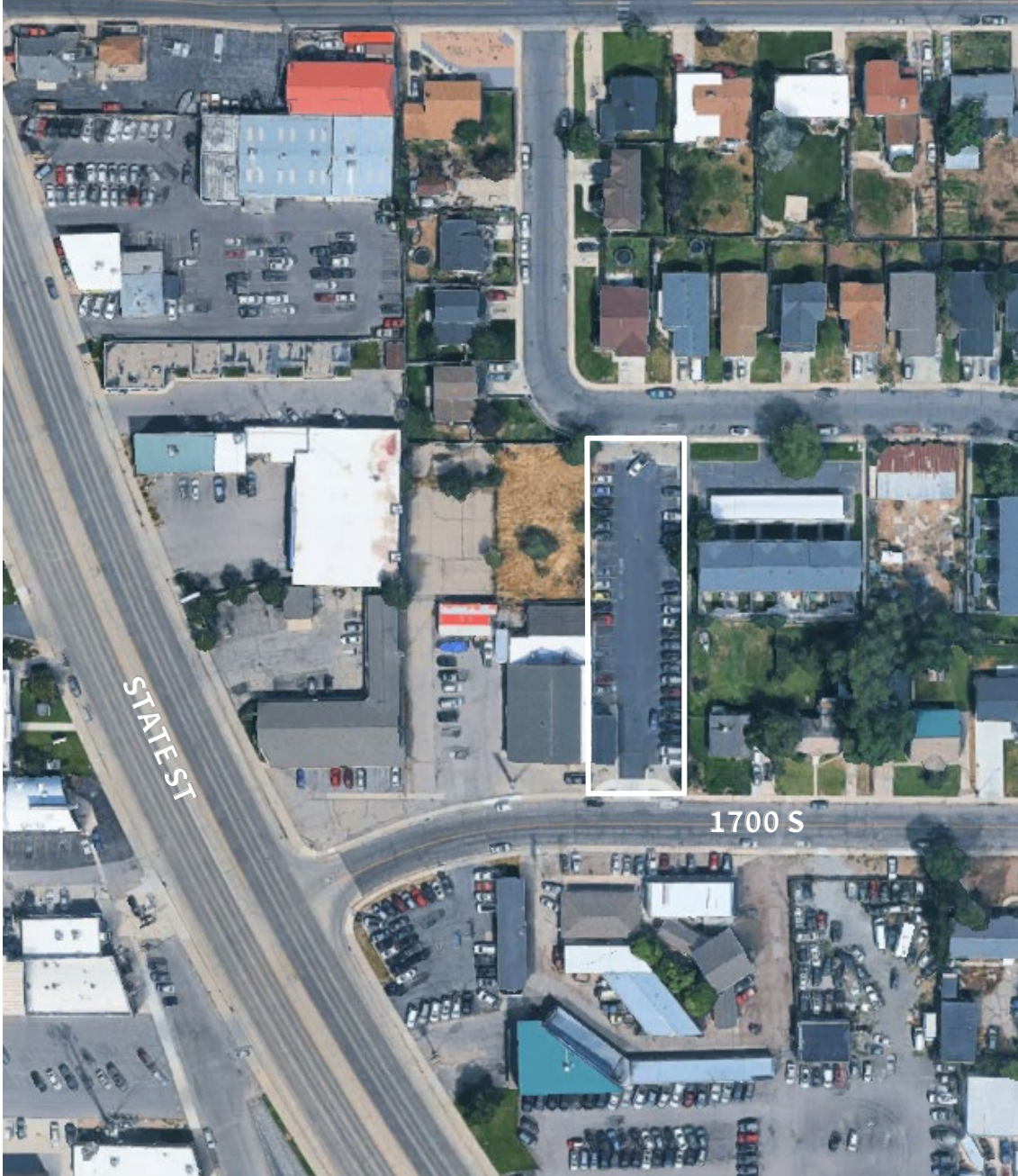
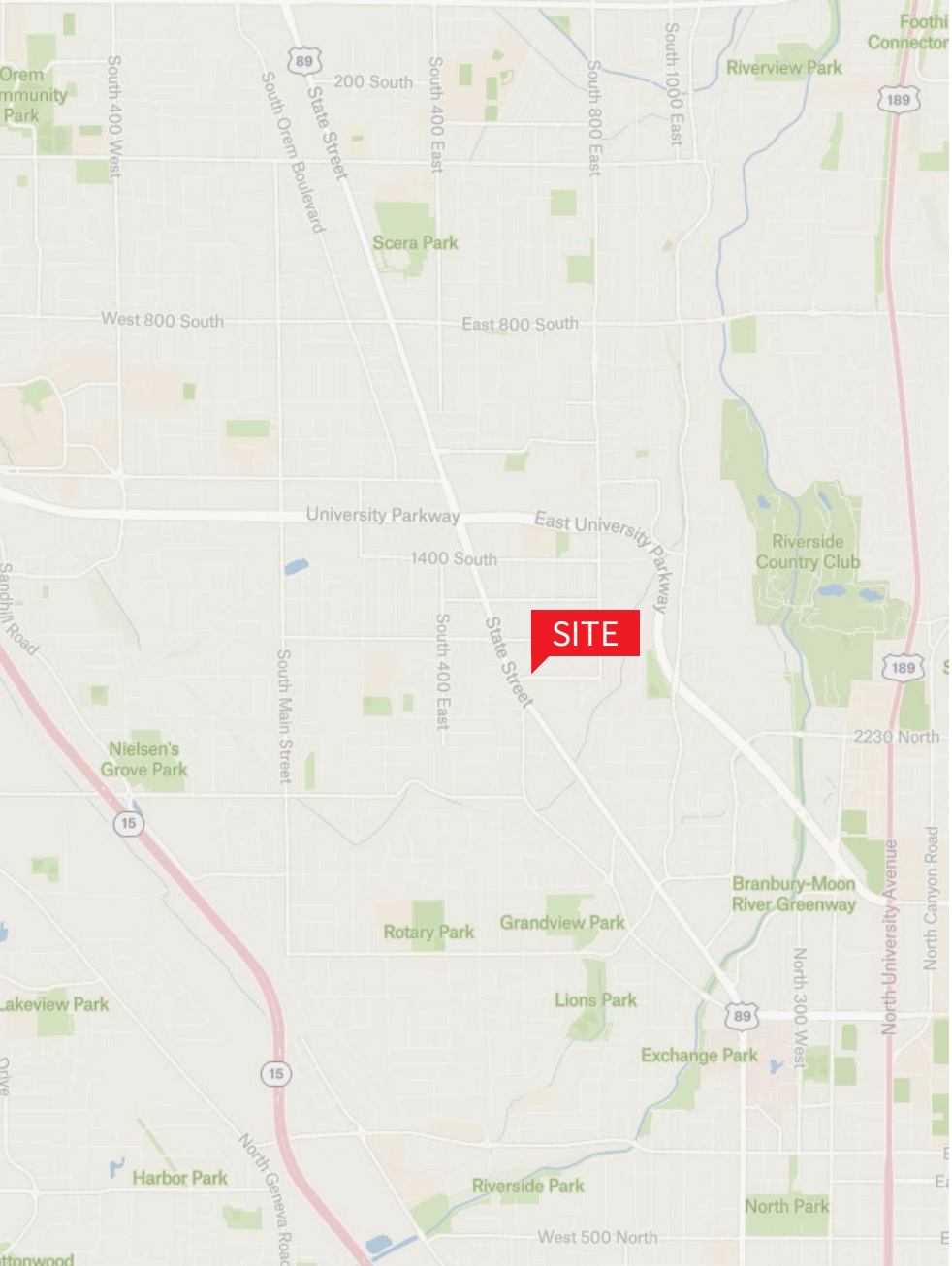
- Owner-user or investment opportunity (potential tenant available) located directly off State Street in Orem
- Owner-operated lot, fully paved and striped to accommodate 50 vehicles
- New office building with restroom and utilities
- The lot may be utilized 'as-is' or redeveloped, with C2 zoning allowing for a wide range of commercial applications
- Please DO NOT disturb the tenant. All tours must be coordinated with the agent



Floor Plan







Laura Dehtear

Associate, Brokerage

Laura.Dehtear@jll.com

+1 801 921 3467

jll.com

Jones Lang LaSalle Brokerage, Inc.