

160 PINE

SUITE 250
8,017 RSF

FULLY PLUG & PLAY
CREATIVE SUBLEASE

EXPOSED CEILINGS

AMPLE NATURAL LIGHT

FULLY FURNISHED &
WIRED

TERM THROUGH
JANUARY 31, 2027



SUITE 250

8,017 RSF

160

PINE



~50

sit-stand workstations



1

large conference room



6

huddle rooms

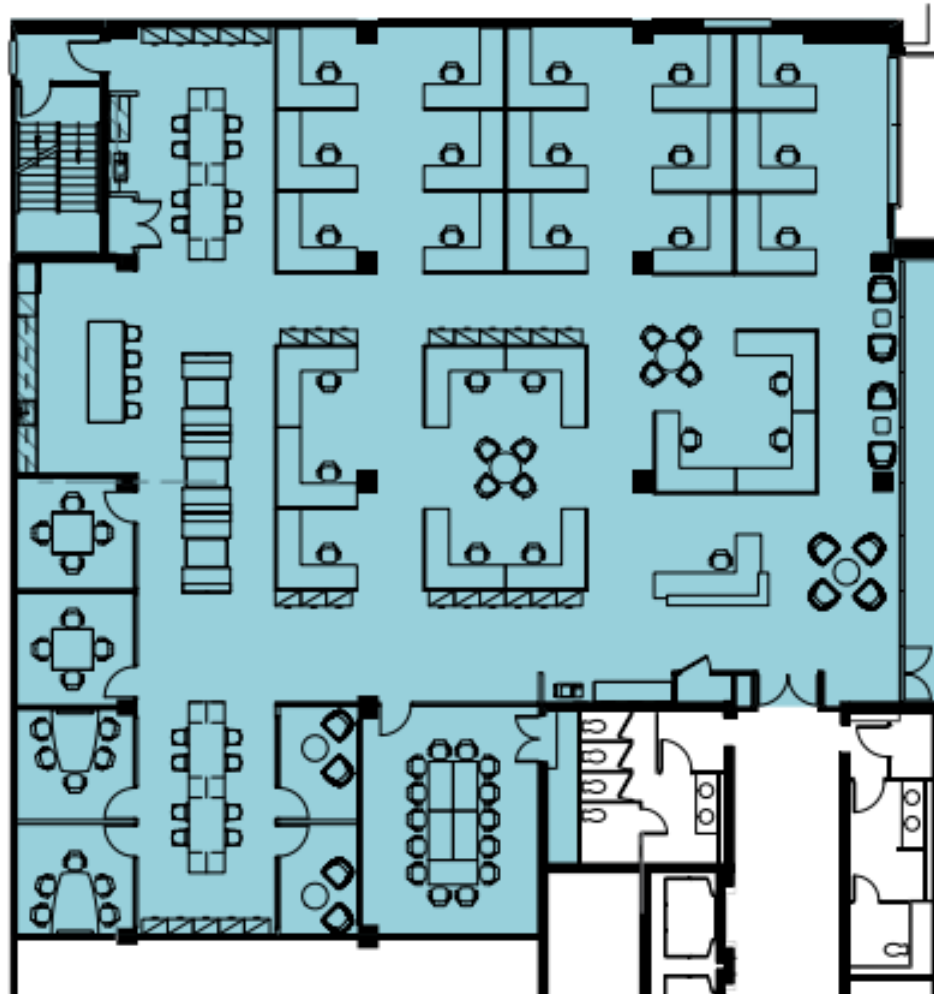


3

phone rooms



open kitchen



FOR MORE INFORMATION:

JASON VOLPE

Executive Managing Director

+1 415 354 6921

jason.volpe@jll.com

RE License #: 01855200

WILL CASSRIEL

Senior Vice President

+1 925 876 3602

will.cassriel@jll.com

RE License #: 02150662



Although information has been obtained from sources deemed reliable, JLL does not make any guarantees, warranties or representations, express or implied, as to the completeness or accuracy as to the information contained herein. Any projections, opinions, assumptions or estimates used are for example only. There may be differences between projected and actual results, and those differences may be material. JLL does not accept any liability for any loss or damage suffered by any party resulting from reliance on this information. If the recipient of this information has signed a confidentiality agreement with JLL regarding this matter, this information is subject to the terms of that agreement. ©2023. Jones Lang LaSalle IP, Inc. All rights reserved. RE LIC #01856260