

FOR LEASE

365

BLOOR
Street East



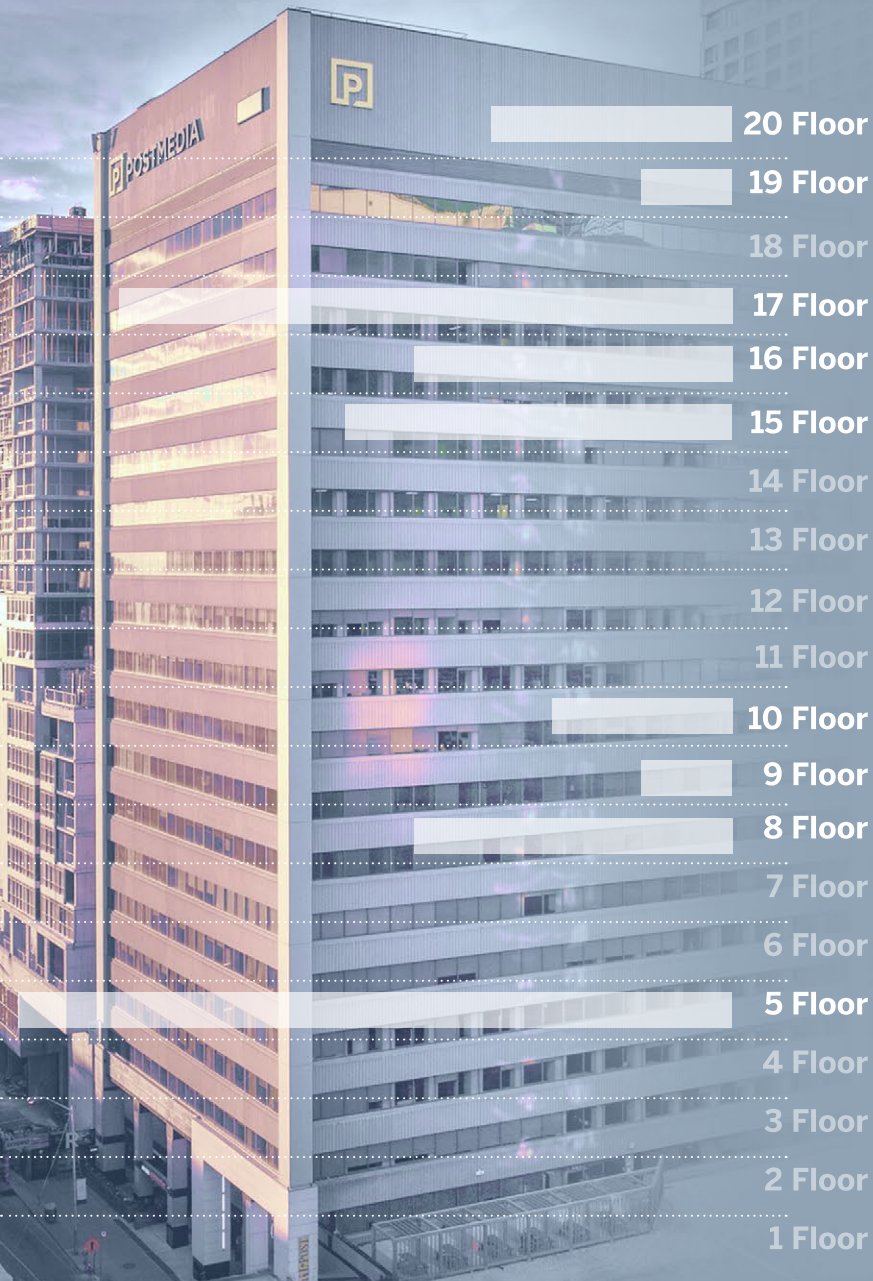
**UNMATCHED TOURING*
& NEW DEAL INCENTIVES****

* \$365 Amazon Gift Card for every new qualified tour 5,000sf +
& \$65.00 for all other new quality tours under 5,000sf

**Commission fee of \$2.50 psf/annum

365 Bloor Management

Availabilities



Additional Rent: **\$23.24 PSF** (Est. 2026)

suite	size	comments	available
2003	4,524 Sq. Ft.	Elevator exposure. Built out with a reception, glass front offices, large boardroom, meeting rooms, kitchen and open area.	Immediate
1910	2,777 Sq. Ft.	Built out with a reception, large boardroom, offices/meeting rooms.	Immediate
1904	3,104 Sq. Ft.	Built out condition.	Immediate
1701	6,231 Sq. Ft.	Suite in base building condition, ready for customized build-out. Full floor opportunity contiguous for 15,584 Sq. Ft.	Immediate
1700	9,623 Sq. Ft.	Existing improvements in place. Customizable based on preferred layout Full floor opportunity contiguous for 15,584 Sq. Ft.	Immediate
1607	2,610 Sq. Ft.	Built out with reception, large boardroom, 2 offices on glass, kitchen and open area.	Immediate
1606	2,450 Sq. Ft.	Model Suite. Furnished and move in ready	Immediate
1500	7,185 Sq. Ft.	Base building condition ready for customized layout.	Immediate
1004	1,745 Sq. Ft.	Built out with open area, 3 meeting rooms and kitchenette	Immediate
1002	863 Sq. Ft.	Built out with one large board room and open area.	Immediate
903	816 Sq. Ft.	Built out with two offices and open area.	Immediate
801	3,768 Sq. Ft.	Existing improvements in place. Customizable based on preferred layout	Immediate
500	16,651 Sq. Ft.	Full floor opportunity. Built out with a mix of private offices, meeting rooms, kitchen and open area. Furniture is potentially available.	Immediate



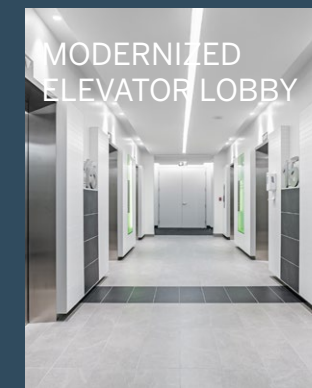
MODERNIZED LOBBY
Onsite Entrance to De Mello Coffe



BOOKABLE BOARDROOM



AMENITIES



MODERNIZED
ELEVATOR LOBBY



UPGRADED
WASHROOMS



10 NEW EV
CHARGERS

Sustainability & Certifications



On-Site Concierge



24/7 Manned Security



Bookable Boardroom
(Exclusive to tenants)



New HVAC and Electrical Systems



Bike Parking



Underground Parking
(1:1000 SF)
Including EV Stalls



Grocery Store & Restaurants



Drugstore & Walk-In Clinic



Certification level awarded by BOMA Canada's Building Environmental Standards (BEST) program. It signifies the highest level of environmental performance and sustainability achieved by a building.



The EARTH Award creates new marketing opportunities to prospective and existing tenants. Give them new insight to the exceptional standards and professionalism of your firm. This award recognizes environmentally friendly and efficient buildings.



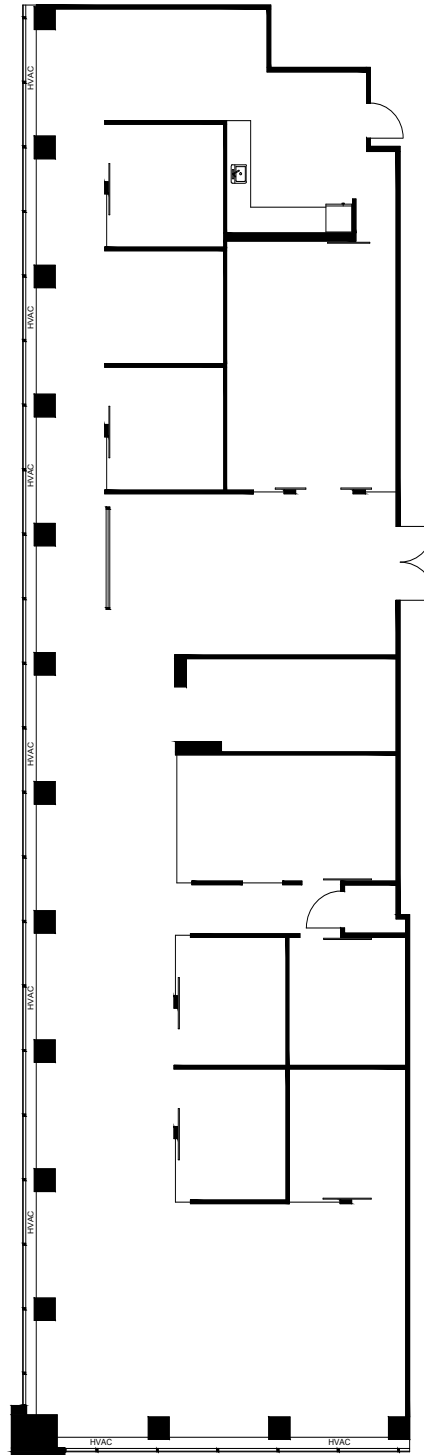
A WiredScore Platinum-certified building has cutting-edge infrastructure for reliable connectivity. It offers high-speed internet, robust networks, and multiple service providers.



Earning the prestigious BOMA 360 label demonstrates that a building is outperforming the competition across all areas of operations and management. Designees report the program helped them achieve operational efficiencies as well as higher levels of tenant satisfaction.

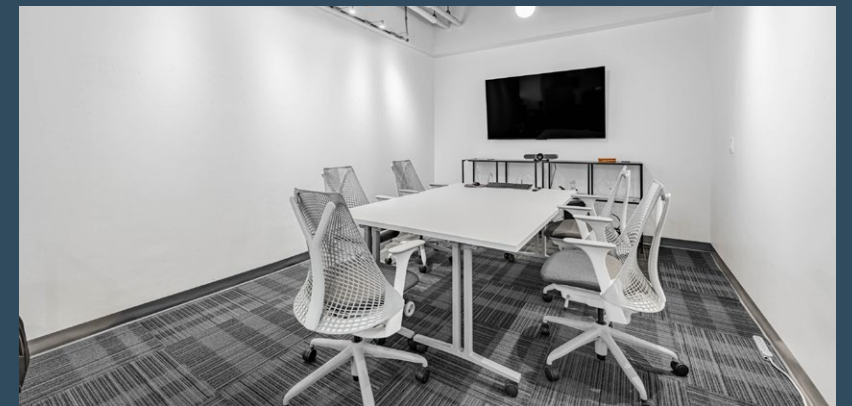
20th Floor | Suite 2003 | 4,524 Sq. Ft.

Penthouse suite with elevator exposure. Move-in ready build out with glass front offices, large boardroom, meeting rooms, kitchen and open work area. Comes partially furnished.



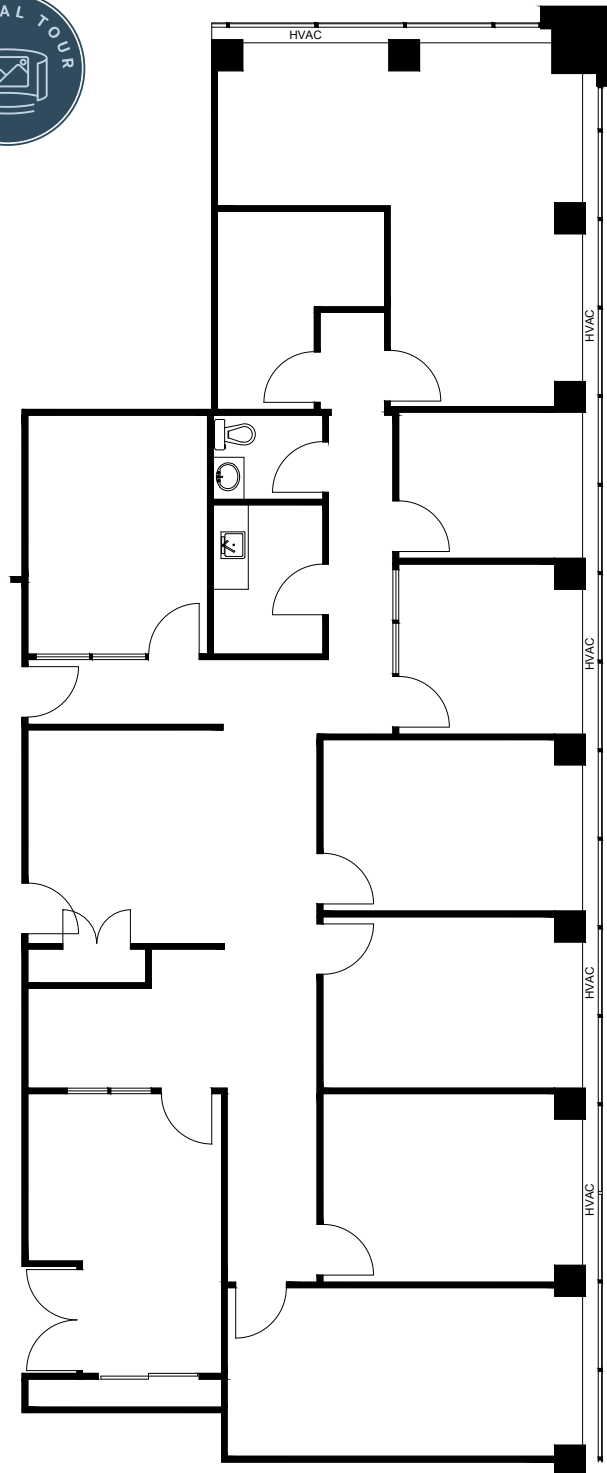
19th Floor | Suite 1910 | 2,777 Sq. Ft.

Built out with a reception, large boardroom, offices/meeting rooms.



19th Floor | Suite 1904 | 2,777 Sq. Ft.

Built out with a reception, large boardroom, offices/meeting rooms.



17th Floor

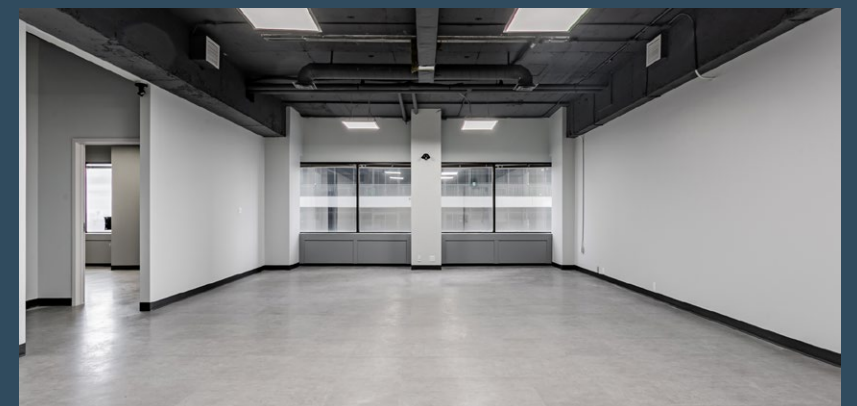
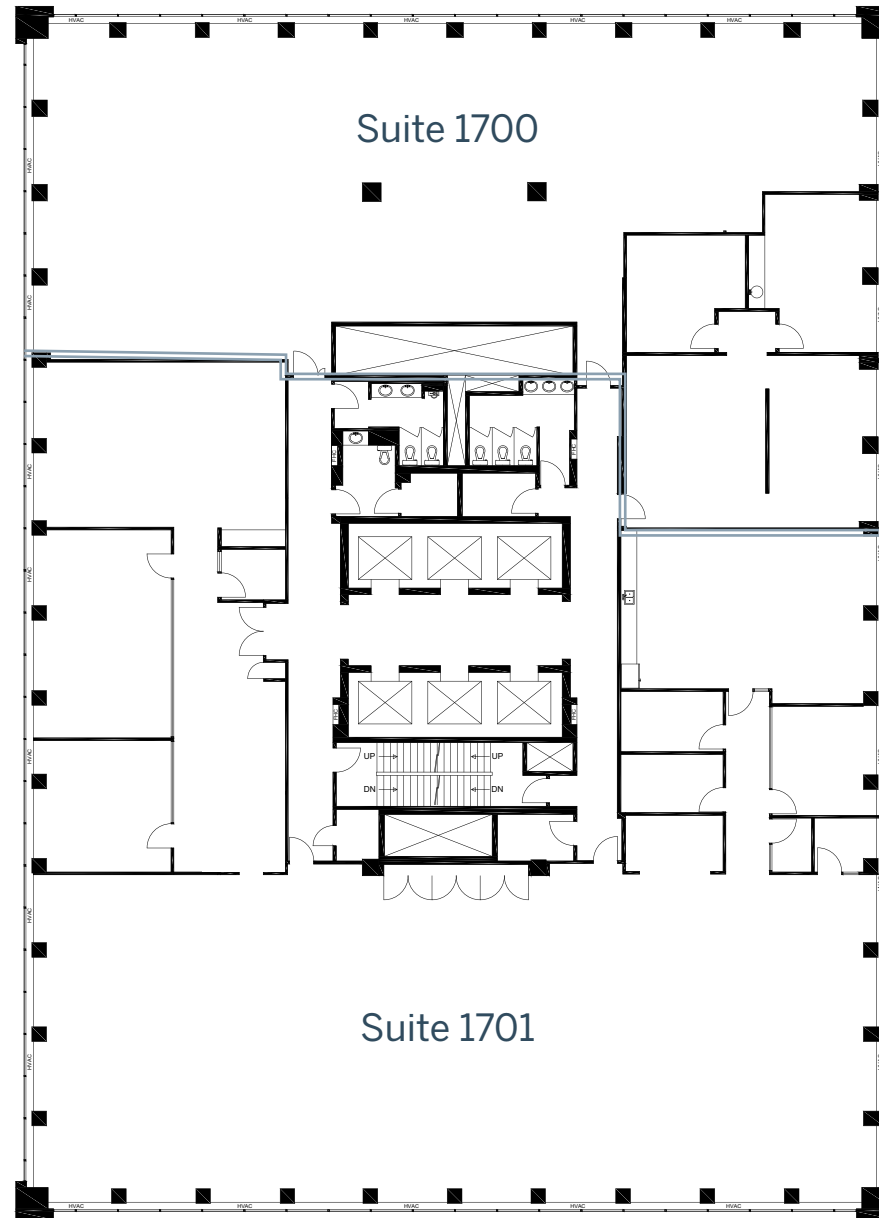
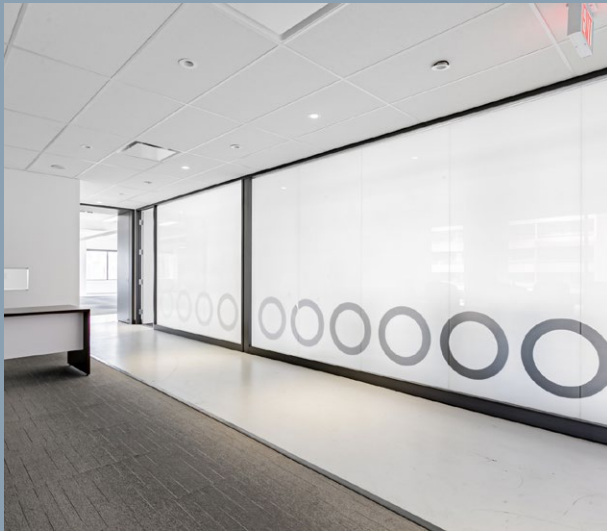
Full Floor

15,584 Sq. Ft.

Suite 1700 - 6,231 Sq. Ft.

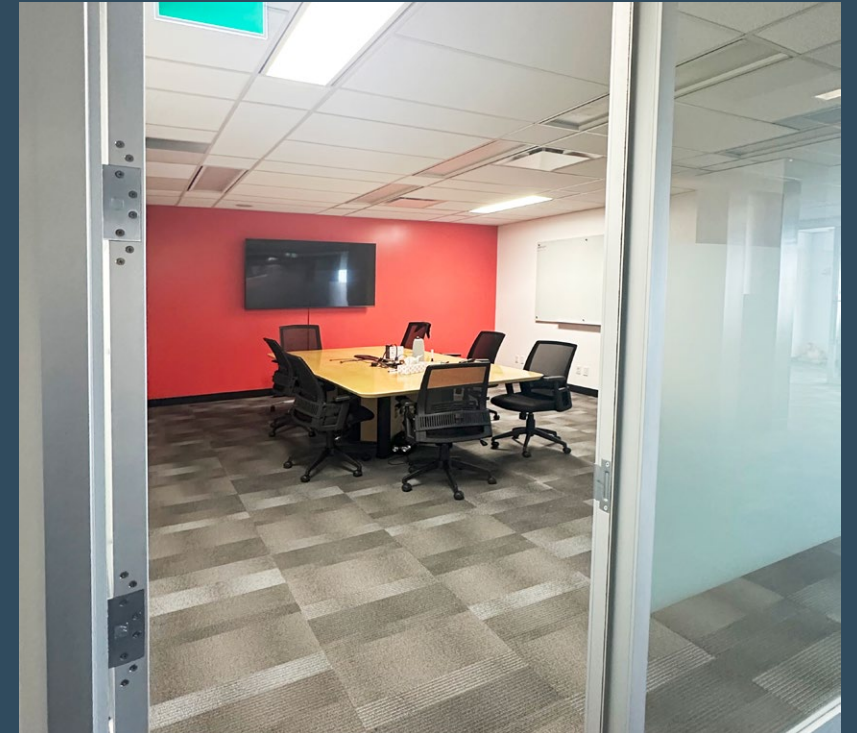
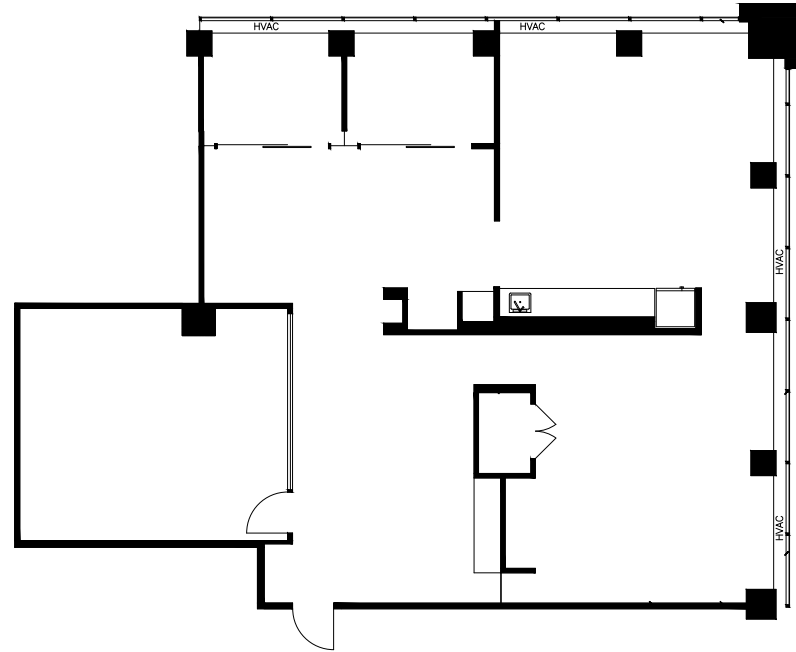
Suite 1701 - 9,623 Sq. Ft.

Full floor available with corridor in place for maximum flexibility.



16th Floor | Suite 1607 | 2,610 Sq. Ft.

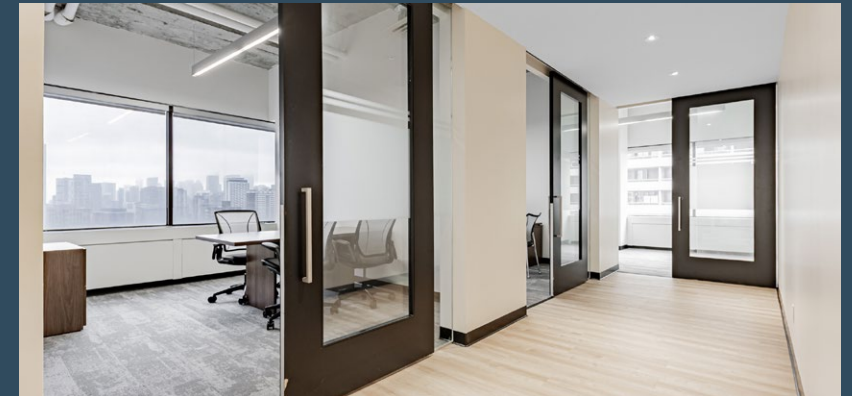
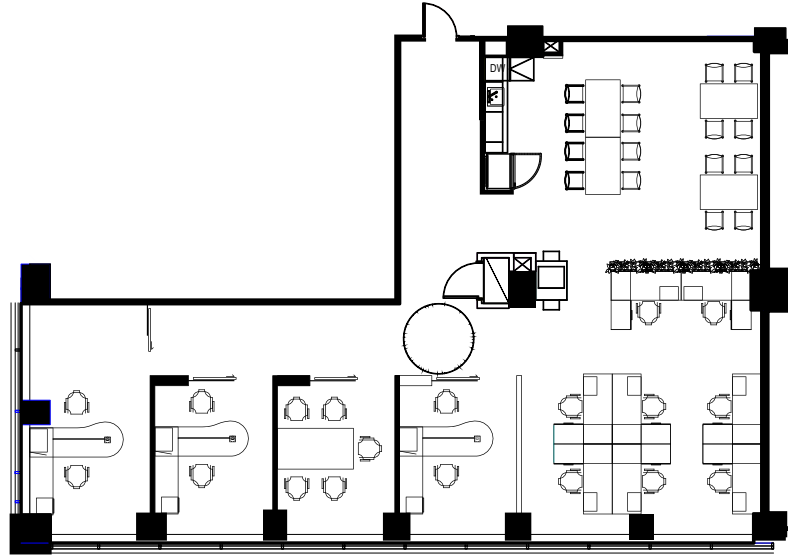
Available Jan 1, 2026. Built out with 2 offices on glass, reception, boardroom, kitchen and open space. Partially furnished



16th Floor | Suite 1606 | 2,450 Sq. Ft.

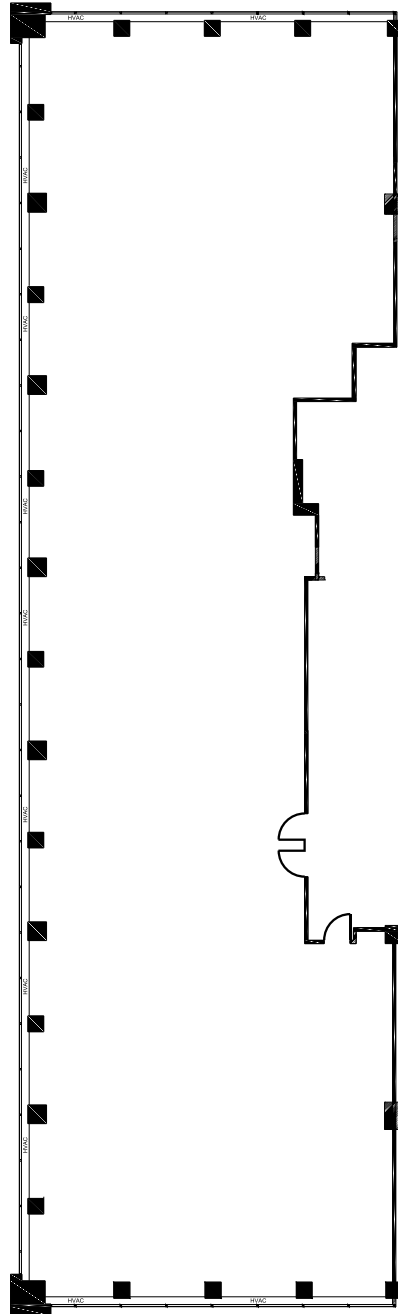
MODEL SUITE

BRAND NEW MODEL SUITE. Built out and furnished with 11 work stations, kitchen, 2 offices and meeting room.



15th Floor | Suite 1500 | 7,185 Sq. Ft.

Base building condition ready for customized layout.

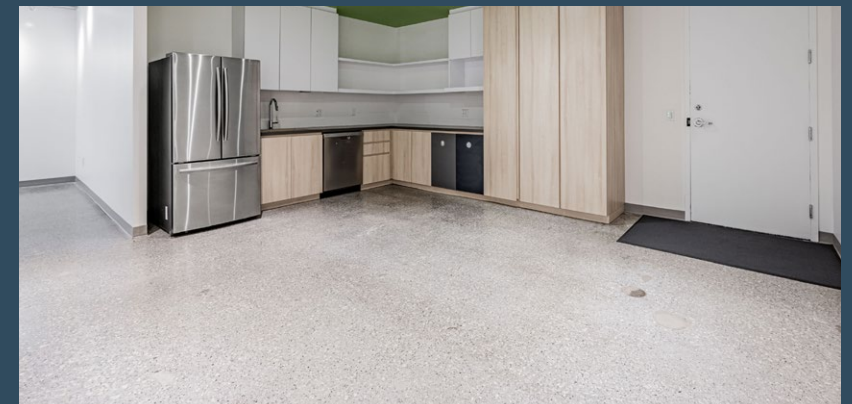
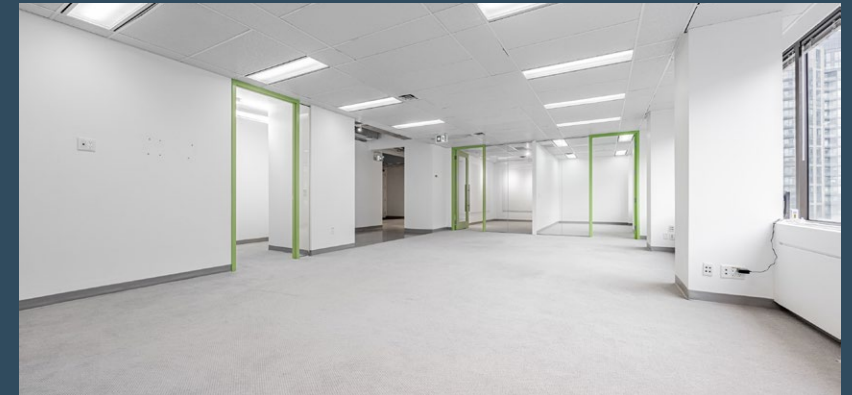
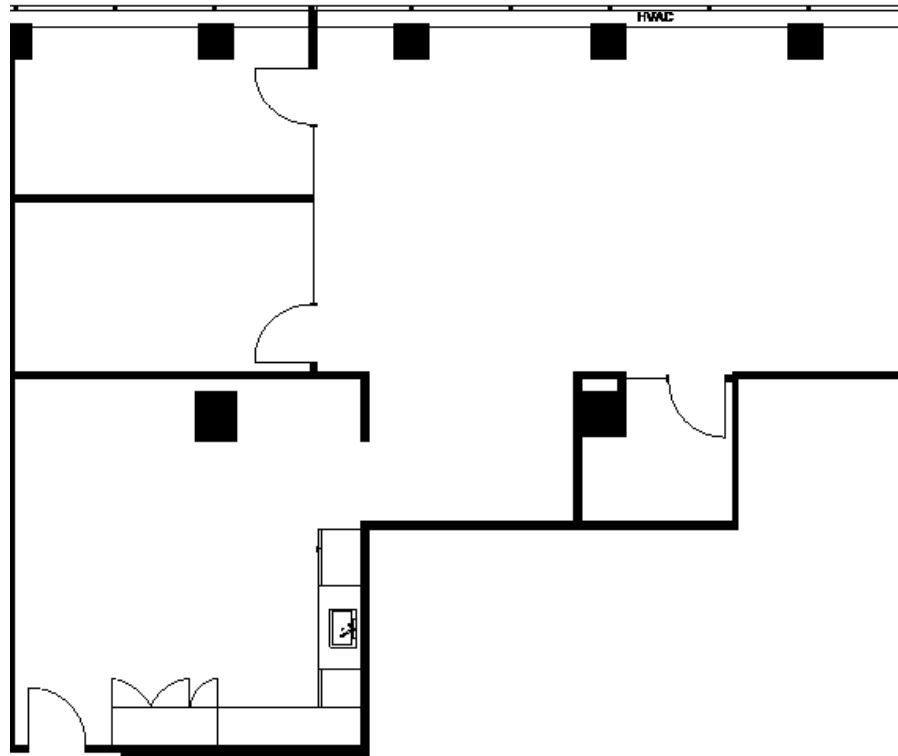


10th Floor | Suite 1004 | 1,745 Sq. Ft.



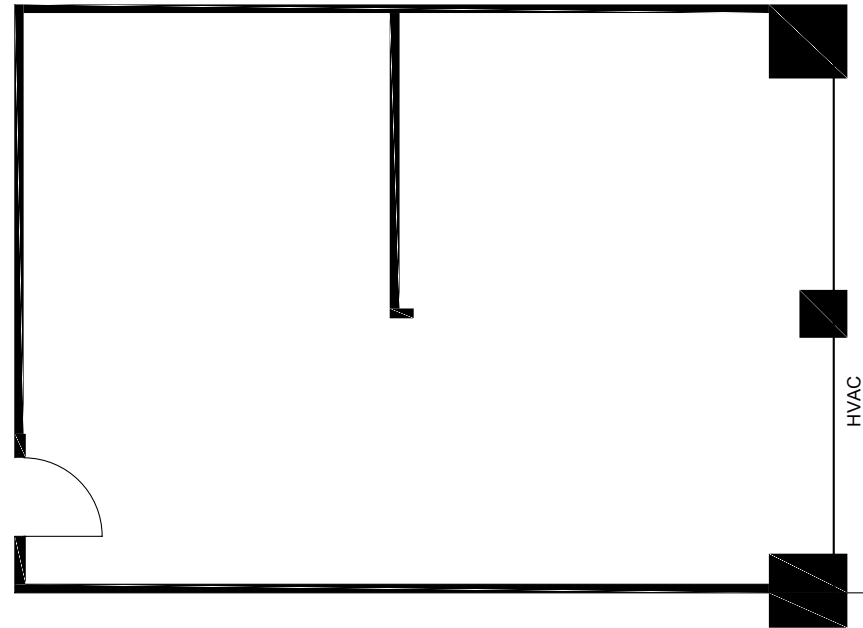
MODEL SUITE

Built out with open area, 3 meeting rooms and kitchenette



10th Floor | Suite 1002 | 863 Sq. Ft.

Built out with one large board room and open area.

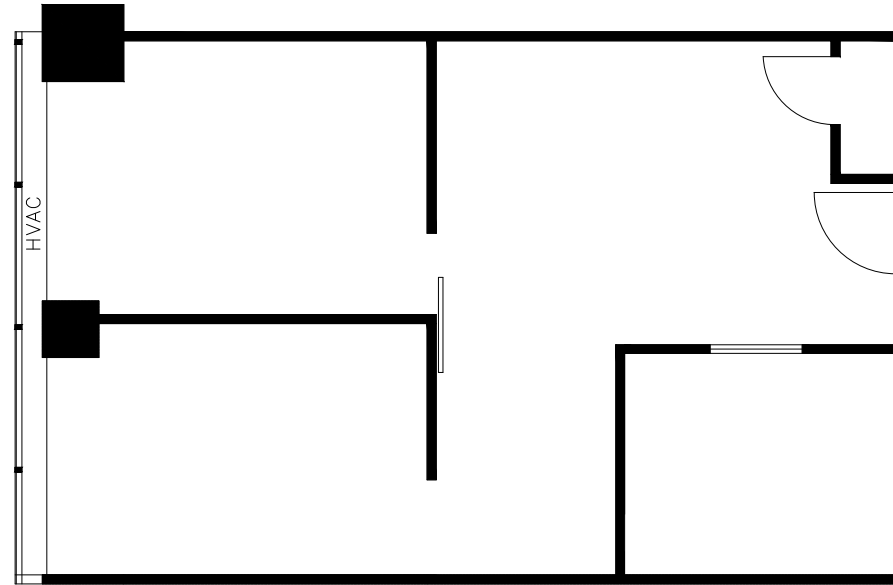


9th Floor

Suite 903

816 Sq. Ft.

Built out with two offices and open area.

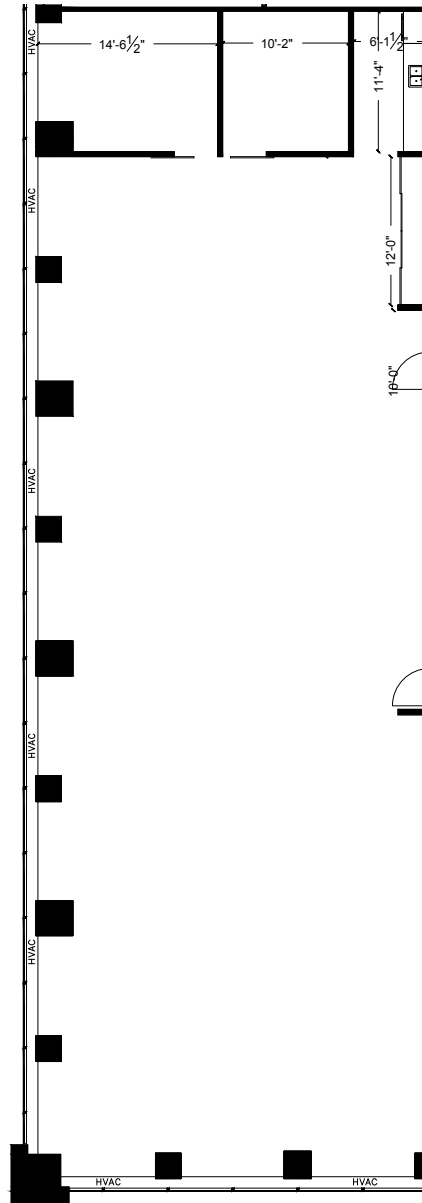


8th Floor

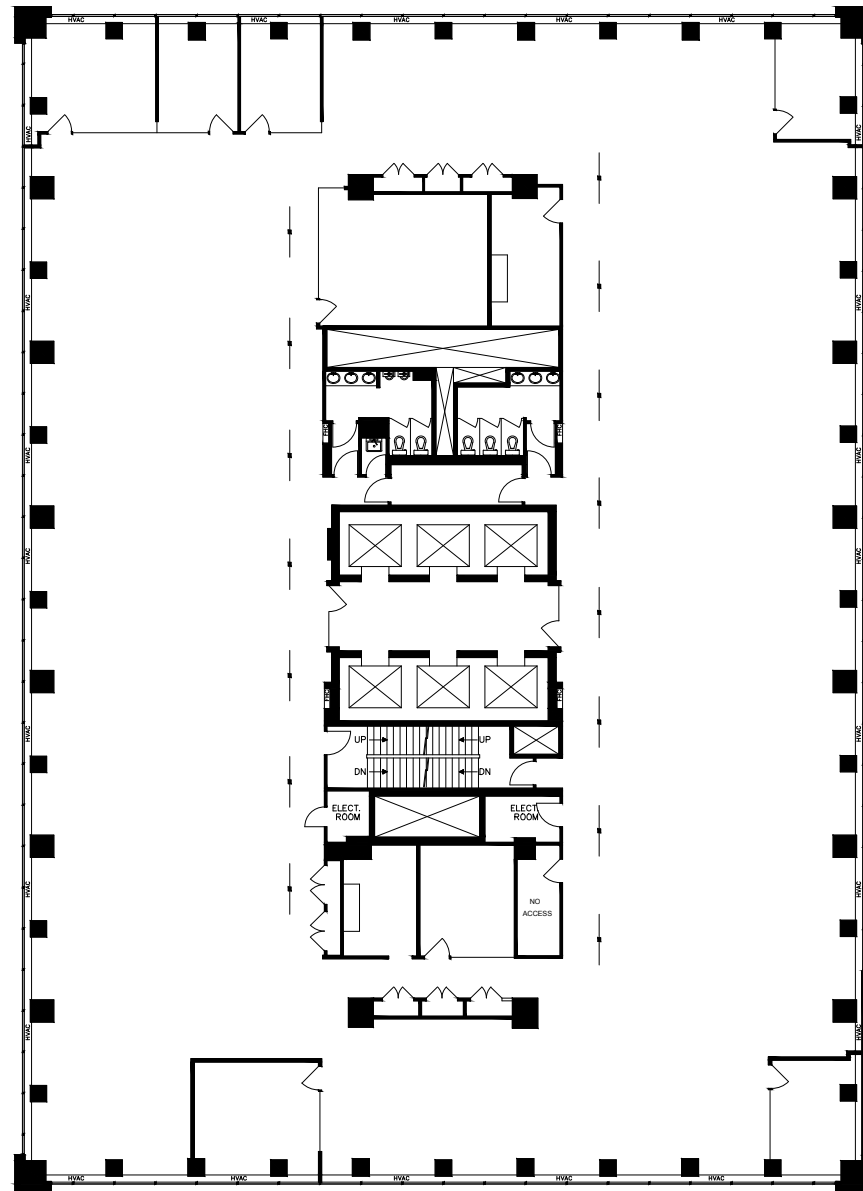
Suite 801

3,768 Sq. Ft.

Existing improvements in place.
Customizable based on preferred layout



Full floor opportunity. Built out with a mix of private offices, meeting rooms, kitchen and open area. Furniture is potentially available.



Transit

- TTC Subway

Cafe and Dinng

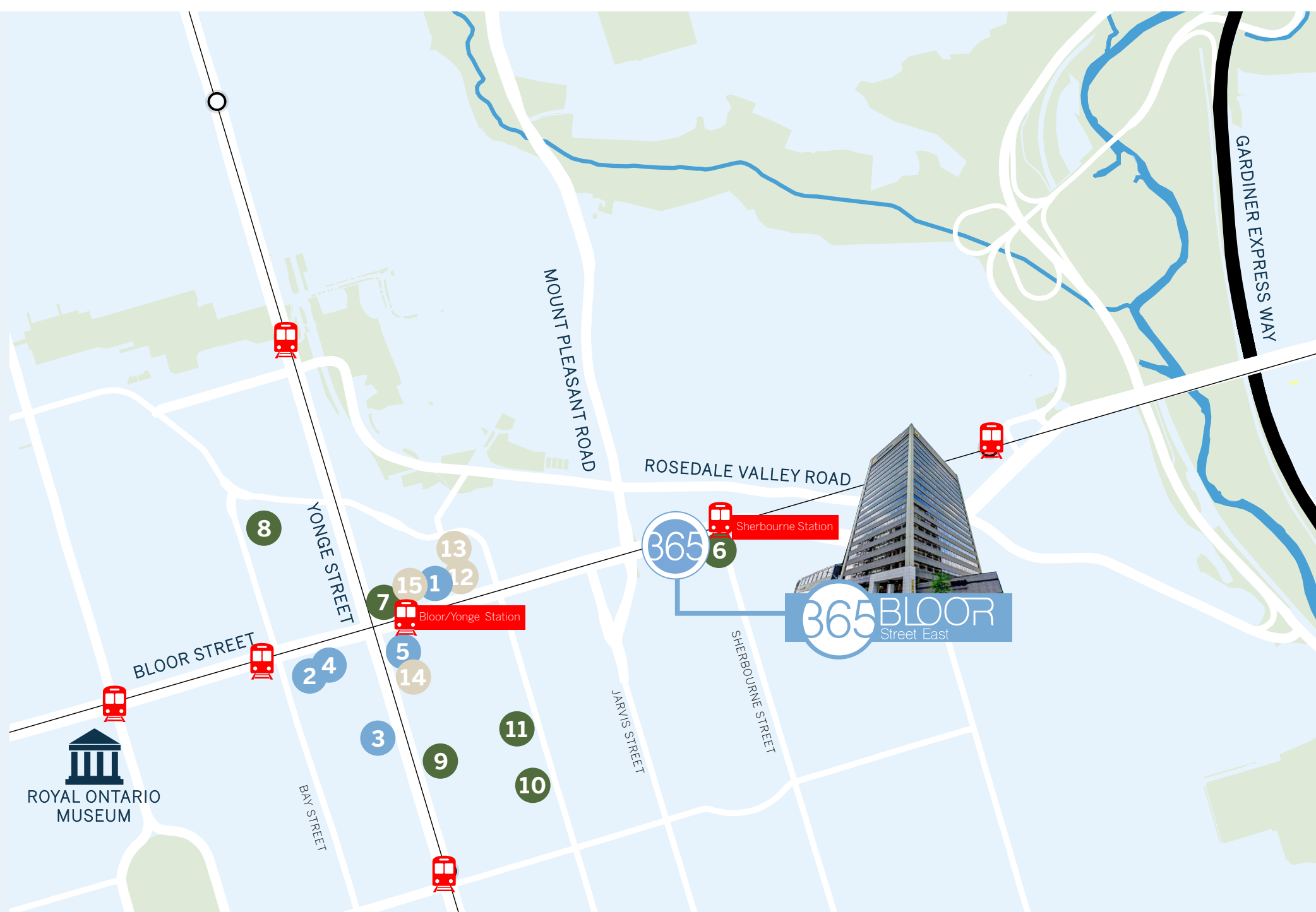
- 1 Living Room
- 2 Eatly Toronto
- 3 7 West Toronto
- 4 AP
- 5 Cafe Landwer

Hotels

- 6 Canopy by Hilton Toronto Yorkville
- 7 W Toronto
- 8 Four Seasons Hotel Toronto
- 9 The Anndore House, part of JDV by Hyatt
- 10 Victoria's Mansion Guest Toronto
- 11 Town Inn Suites

Groceries

- 12 The Market by Longo's
- 13 Rabba Fine Foods
- 14 H Mart
- 15 Shoppers Drug Mart





FOR LEASE

365

BLOOR
Street East

For more information contact our agents:

ADAM HARUN*

Senior Transaction Manager
adam.harun@jll.com
+1 (416) 238-4806

CALI HOPKINS*

Associate
cali.hopkins@jll.com
+1 (647) 505-6502

CHRISTINA KARAM*

Vice President
christina.karam@jll.com
+1 (647) 987-6183

* Sales Representative

Although information contained herein has been obtained from sources deemed reliable, the owner, Jones Lang LaSalle Real Estate Services, Inc. ("JLL Canada"), and/or their representatives, brokers or agents make no guarantees as to the accuracy of the information contained herein, and offer the property/portfolio without express or implied warranties of any kind. The property/portfolio may be withdrawn without notice. If the recipient of this information has signed a confidentiality agreement regarding this matter, this information is subject to the terms of that agreement. © 2024 JLL Canada. All rights reserved.

365 Bloor Management

