



250 MONTGOMERY

STREET





Building Highlights

Lobby Virtual Tour

- Prime Financial District Location
- 16 Story Class A Office Tower
- +/- 7,650 RSF Flexible and Efficient Side-Core Floor Plates
- Significant Window-line with Great Natural Light
- Recent Elevator Modernization & Destination Dispatch Added
- Floors are Virtually Column-Free
- Excellent Access to Public Transportation, Hotels and Restaurants
- Retail includes World-renowned Flagship CrossFit

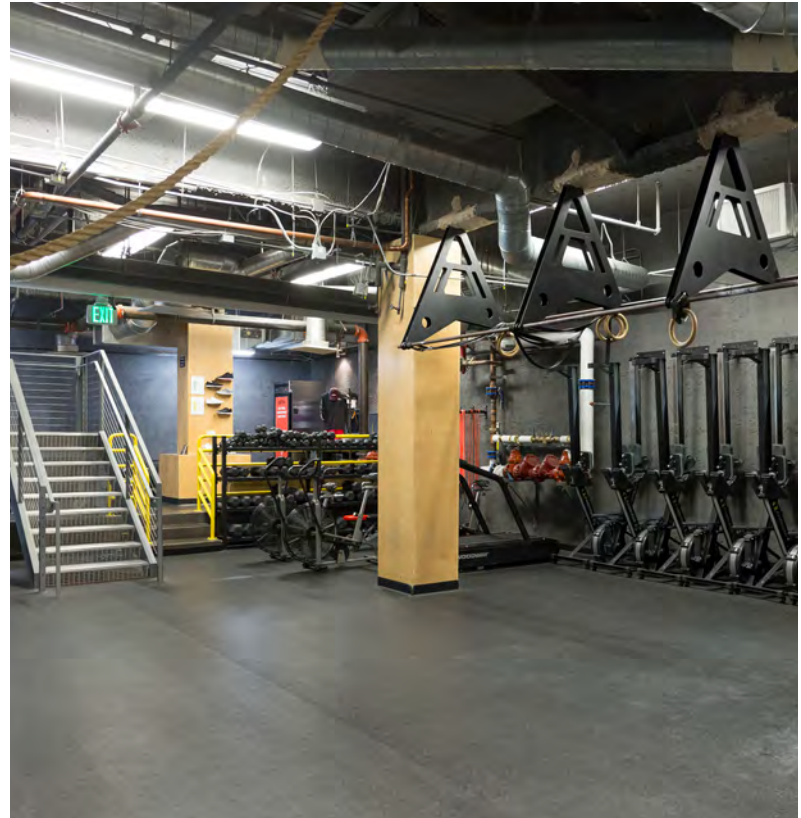
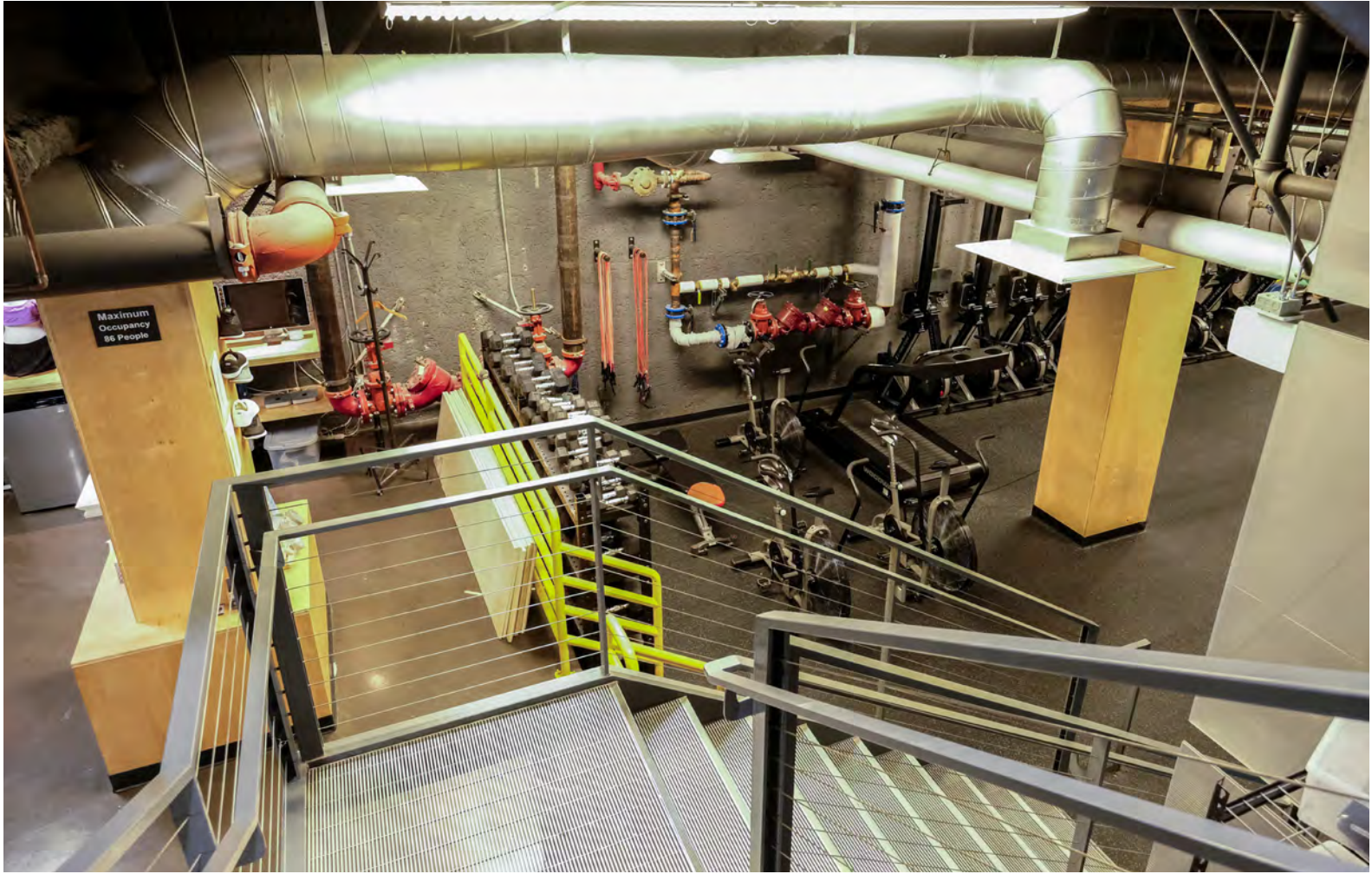
CONTACT

Matthew D. Shewey
Senior Managing Director
+1 415 395 7255
matt.shewey@jll.com
RE License # 01445125

Charlie Hanafin
Senior Vice President
+1 415 395 4951
charlie.hanafin@jll.com
RE License # 01996121

Lexi Castellino
Associate
+1 650 400 8344
lexi.castellino@jll.com
RE License # 02221002



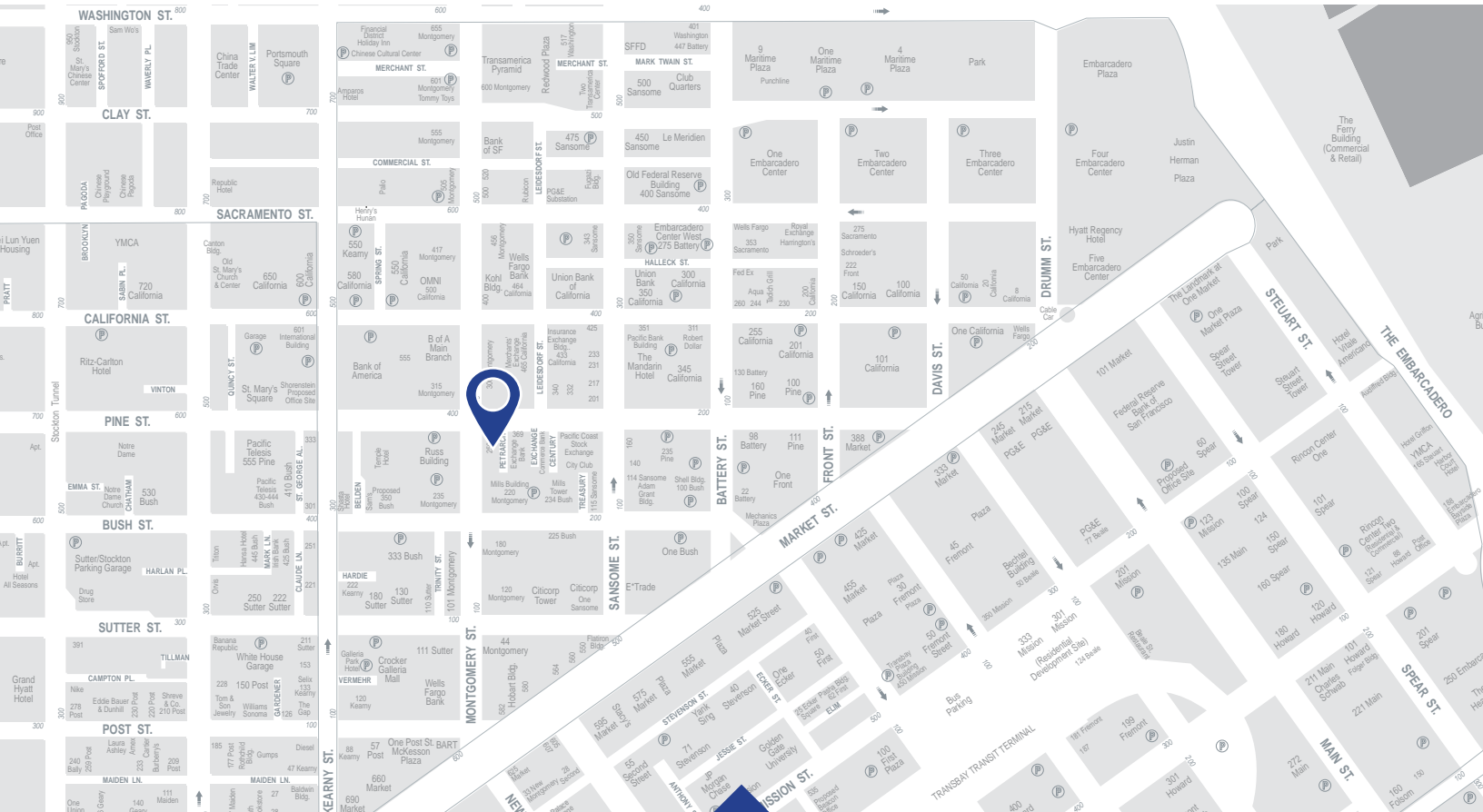






250 MONTGOMERY

STREET



AREA AMENITIES

Restaurants/Cafe

- Aji Kiji
- Blue Bottle Coffee
- Boichik Bagels
- Café Tiramisu
- Cafe Venue
- Coffee Bar-Kearny
- Earth Bar
- El Faro's Mexican Food
- Escape from New York Pizza
- Foundation Cafe
- Freshroll
- Hi City
- Holbrook House
- illy Caffè
- Joe & The Juice
- Ladle & Leaf
- L&L Hawaiian Barbecue
- Local Roots
- Mendocino Farms
- Mixt Green

- Muracci's Japanese Grill
- Noah's Bagels
- Peet's Coffee & Tea
- Proper Food
- Ramen Hiroshi San Francisco
- Sam's Grill & Seafood Restaurant
- Starbucks
- Subway
- Thainery
- The Treasury
- The Vault Garden
- Tin on Kearny
- Turtle Tower
- Wayfare Tavern
- Working Girls Cafe

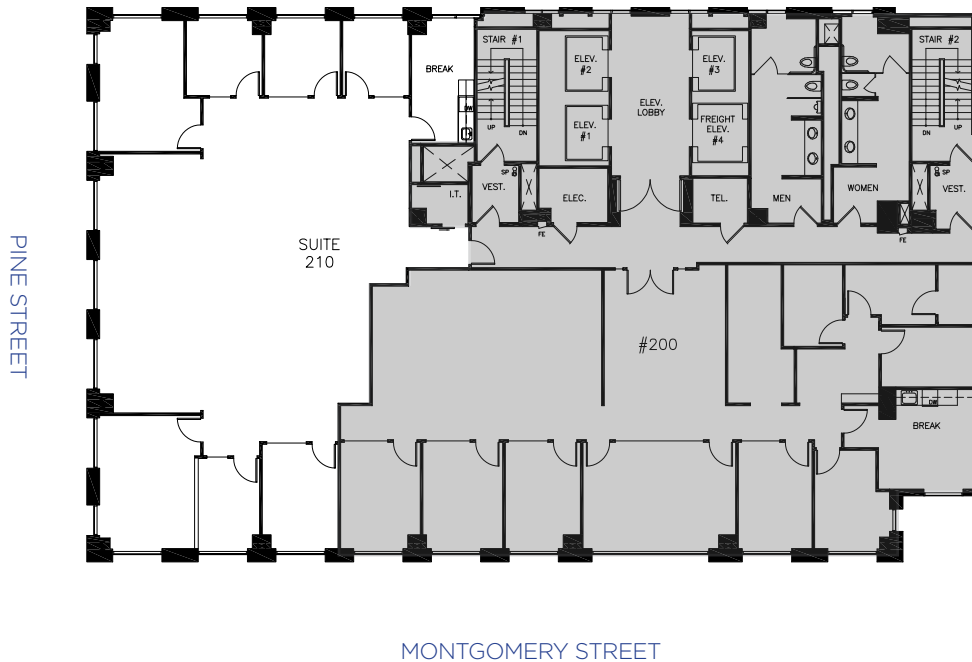
Services/Retail

- Bank of America
- Bank of the Orient
- Bank of the West
- Barry's FiDi

- Cable Car Clothiers
- Chase Bank
- Equinox
- FedEx
- Flagship Crossfit
- Flower Cart
- Four Seasons Hotel
- Omni Hotel
- Shanghai Commercial Bank
- US Bank
- Walgreens
- Wells Fargo Bank

Parking Garages

- Ace Parking (580 California)
- Ampco System Parking (220 Bush)
- Ampco System Parking (333 Bush)
- LAZ Parking (345 California)
- Mills Building (220 Montgomery)
- ProPark (225 Bush Garage)
- Russ Building Garage (235 Montgomery)
- 235 Pine Street Parking Garage



Floor Information

[Click Here for Additional Photos](#)

- 3,704 RSF
- Available now
- Can be fully furnished
- 5 Private offices
- 2 Conference rooms
- Kitchenette area

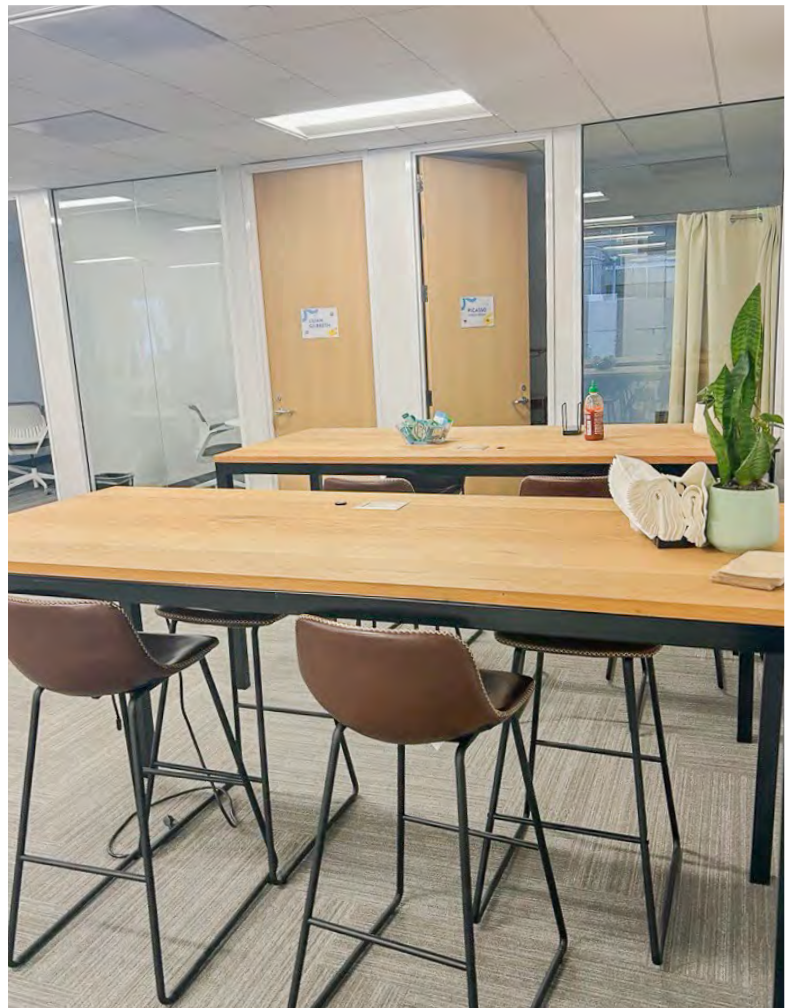
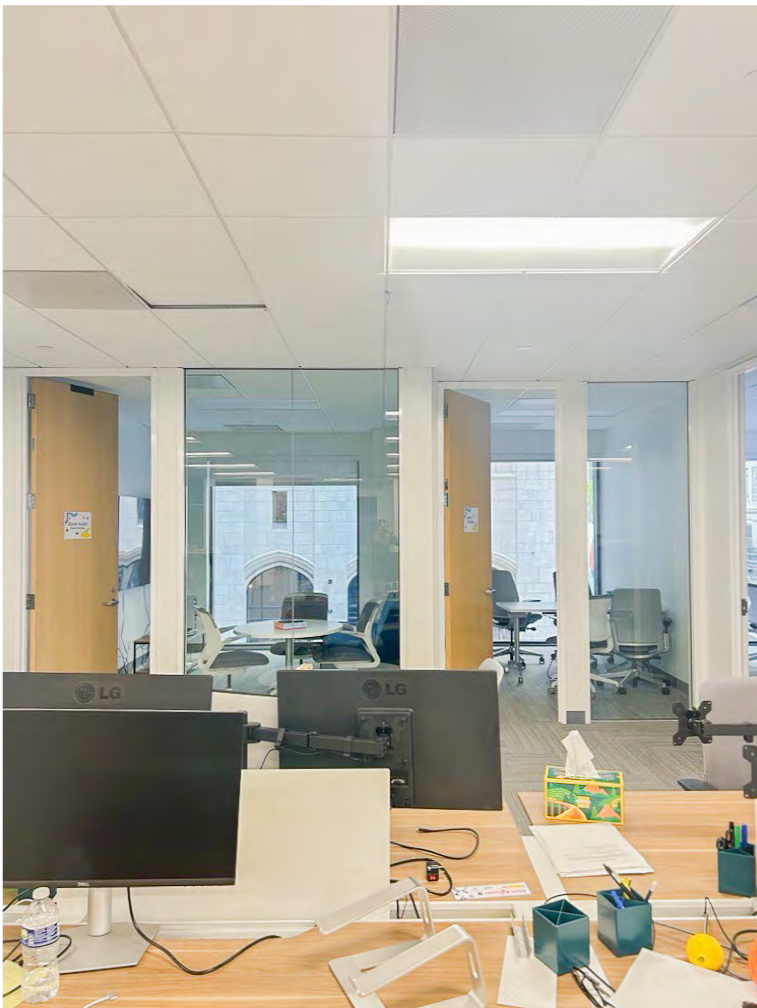
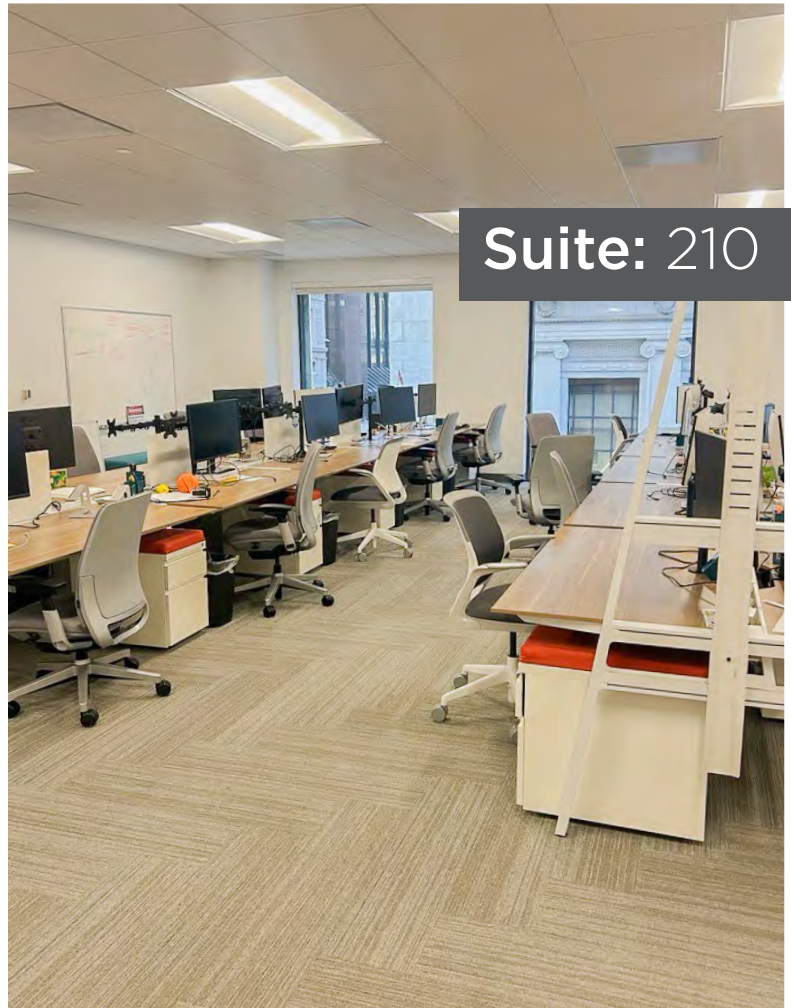
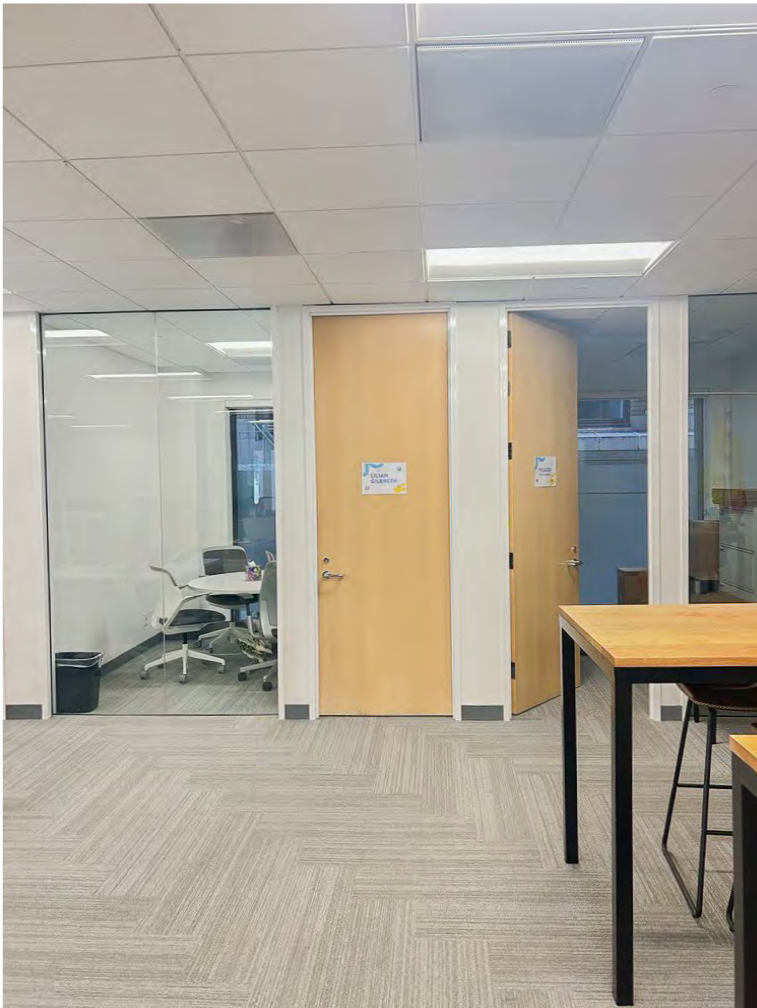
CONTACT

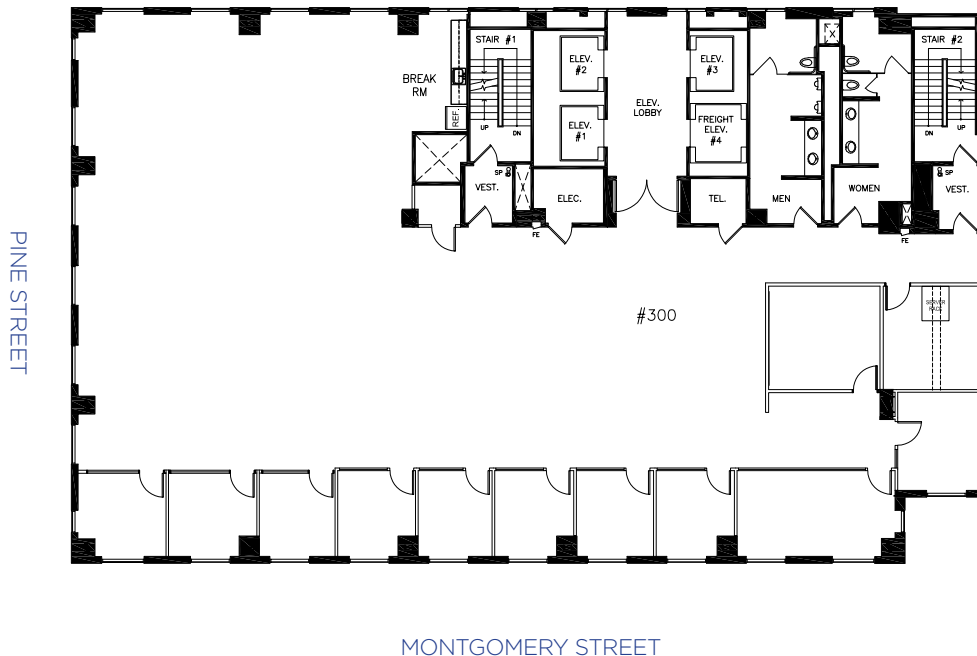
Matthew D. Shewey
Senior Managing Director
+1 415 395 7255
matt.shewey@jll.com
RE License # 01445125

Charlie Hanafin
Senior Vice President
+1 415 395 4951
charlie.hanafin@jll.com
RE License # 01996121

Lexi Castellino
Associate
+1 650 400 8344
lexi.castellino@jll.com
RE License # 02221002







Floor Information

[Click Here for Additional Photos](#)

- 7,666 RSF
- Available now
- Full floor 2nd-gen creative suite
- Exposed ceilings
- 1 Conference room
- 10 Private offices/meeting rooms
- IT/Storage room
- Open space
- Full kitchen

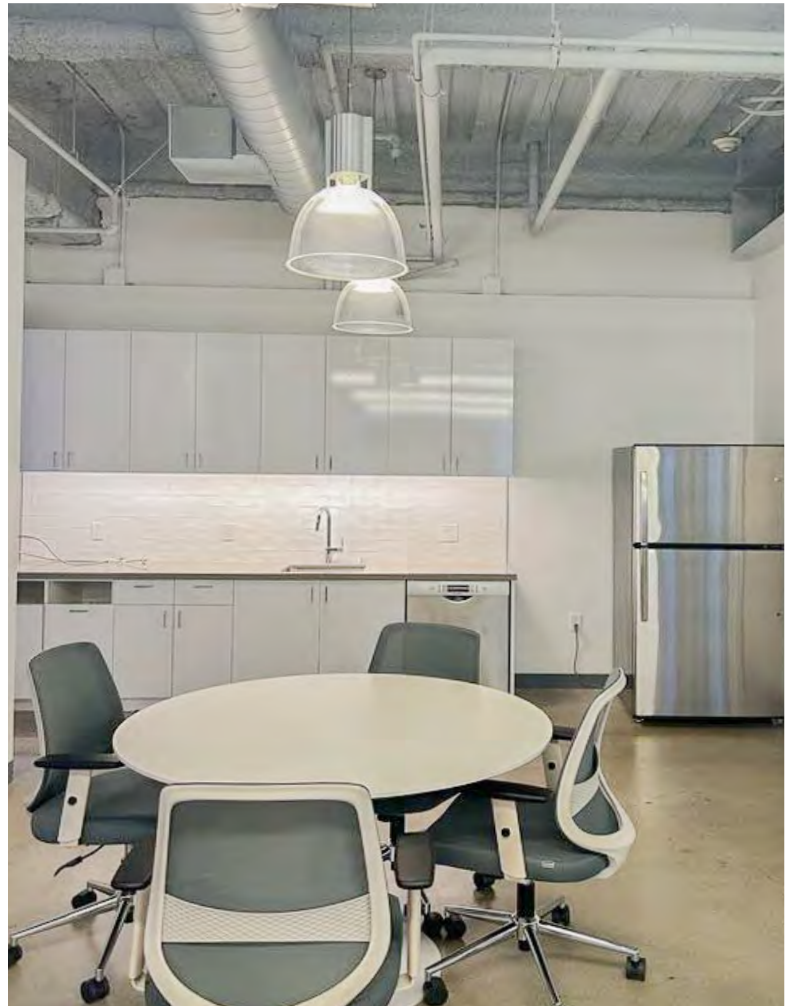
CONTACT

Matthew D. Shewey
Senior Managing Director
+1 415 395 7255
matt.shewey@jll.com
RE License # 01445125

Charlie Hanafin
Senior Vice President
+1 415 395 4951
charlie.hanafin@jll.com
RE License # 01996121

Lexi Castellino
Associate
+1 650 400 8344
lexi.castellino@jll.com
RE License # 02221002

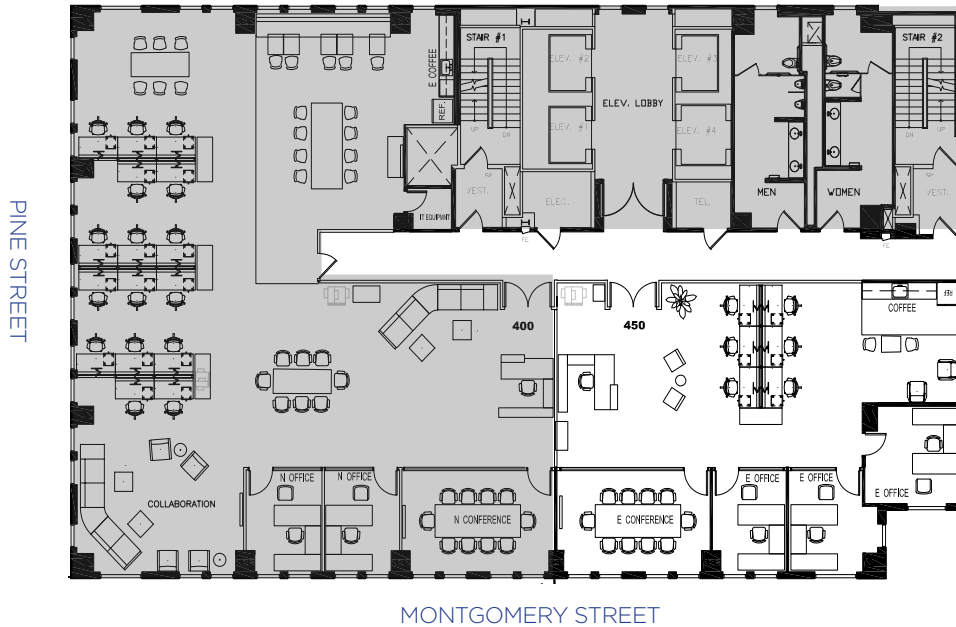




250 MONTGOMERY

STREET

Suite: 450



Floor Information

[Click Here for Additional Photos](#)

- 2,434 RSF
- Available August 2026
- Creative ceilings
- Can be fully furnished
- 3 private offices
- 1 Conference room

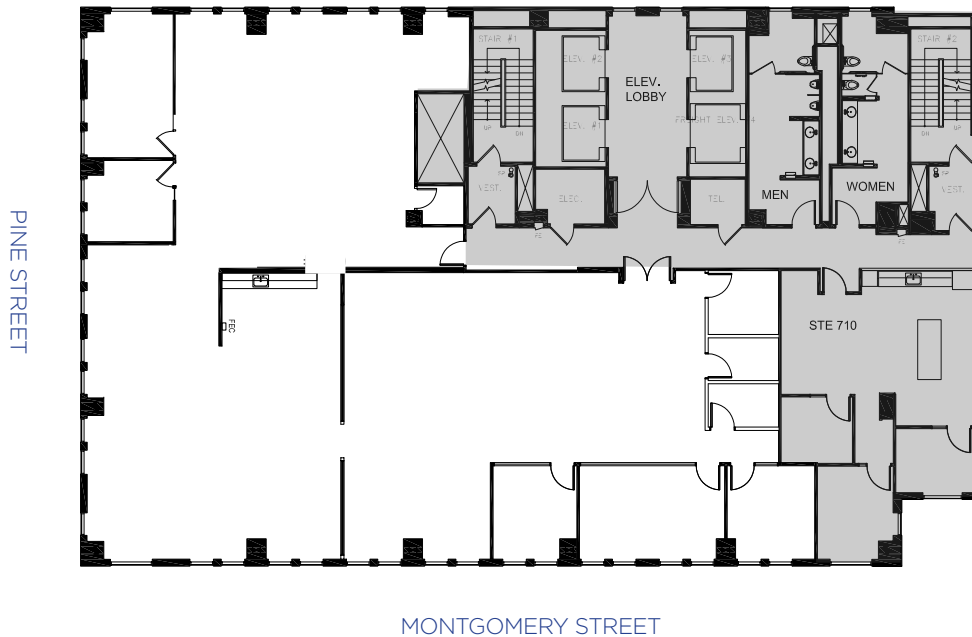
CONTACT

Matthew D. Shewey
Senior Managing Director
+1 415 395 7255
matt.shewey@jll.com
RE License # 01445125

Charlie Hanafin
Senior Vice President
+1 415 395 4951
charlie.hanafin@jll.com
RE License # 01996121

Lexi Castellino
Associate
+1 650 400 8344
lexi.castellino@jll.com
RE License # 02221002





Floor Information

[Click Here for Additional Photos](#)

- 6,556 RSF
- Available now
- Creative suite
- Open plan
- 6 Various sized meeting rooms
- 2 Conference rooms
- Open kitchen/break area
- Mostly exposed ceilings

CONTACT

Matthew D. Shewey
Senior Managing Director
+1 415 395 7255
matt.shewey@jll.com
RE License # 01445125

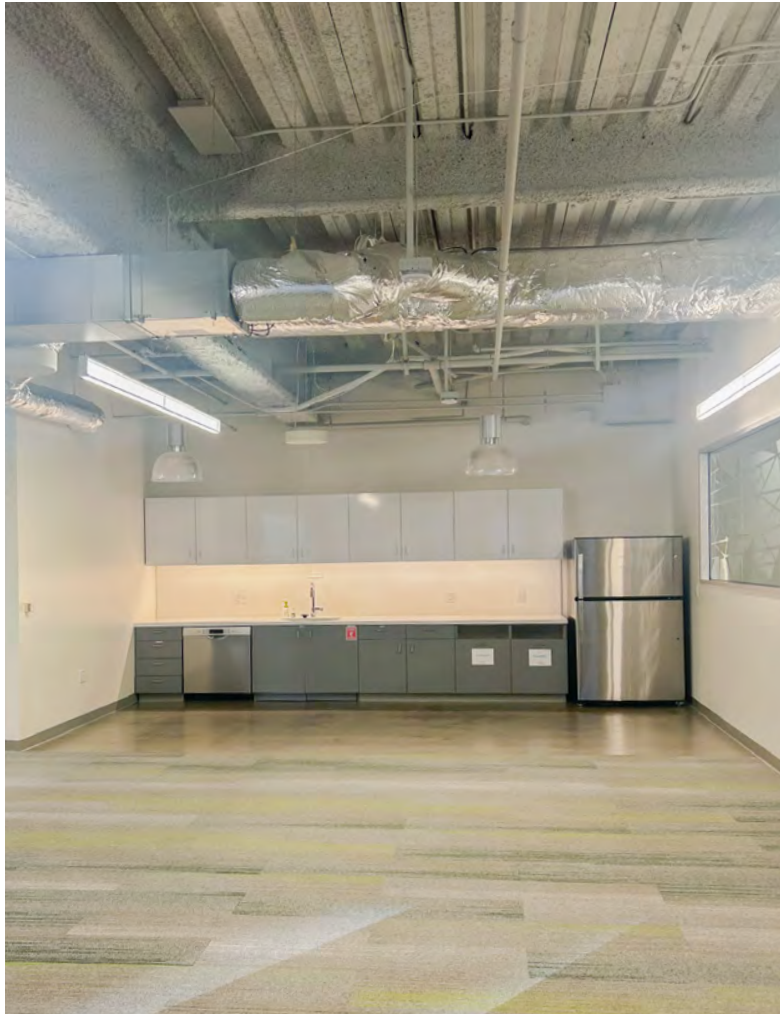
Charlie Hanafin
Senior Vice President
+1 415 395 4951
charlie.hanafin@jll.com
RE License # 01996121

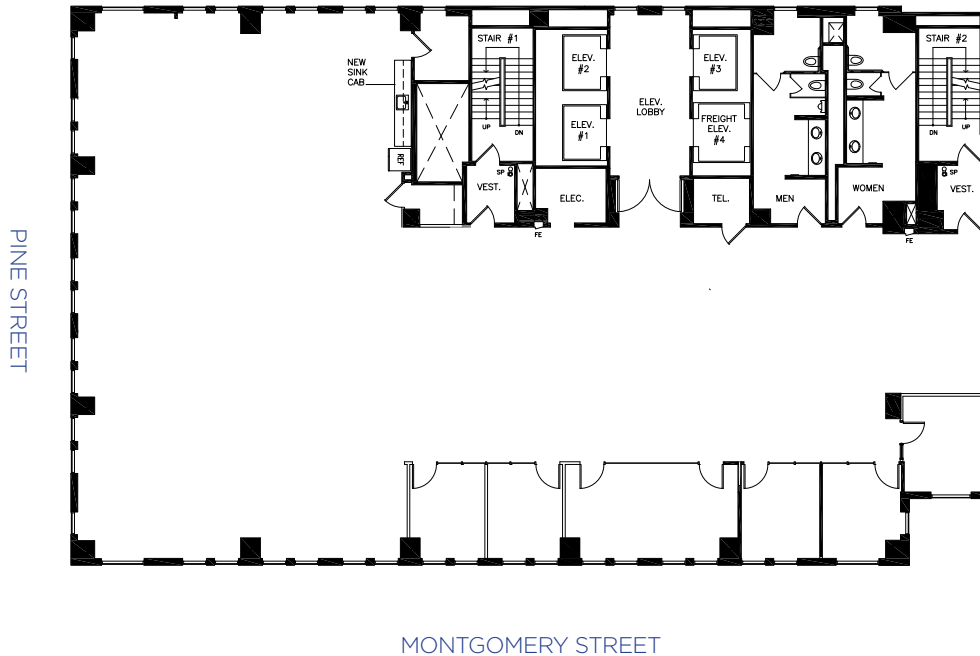
Lexi Castellino
Associate
+1 650 400 8344
lexi.castellino@jll.com
RE License # 02221002





Suite: 700





Floor Information

[Click Here for Additional Photos](#)

- 7,629 RSF
- Available now
- 2nd-gen creative spec suite
- Full floor opportunity
- Fully furnished/plug-and-play space
- 1 Large conference room
- 5 Private offices/meeting rooms
- Nice outlooks and natural light

CONTACT

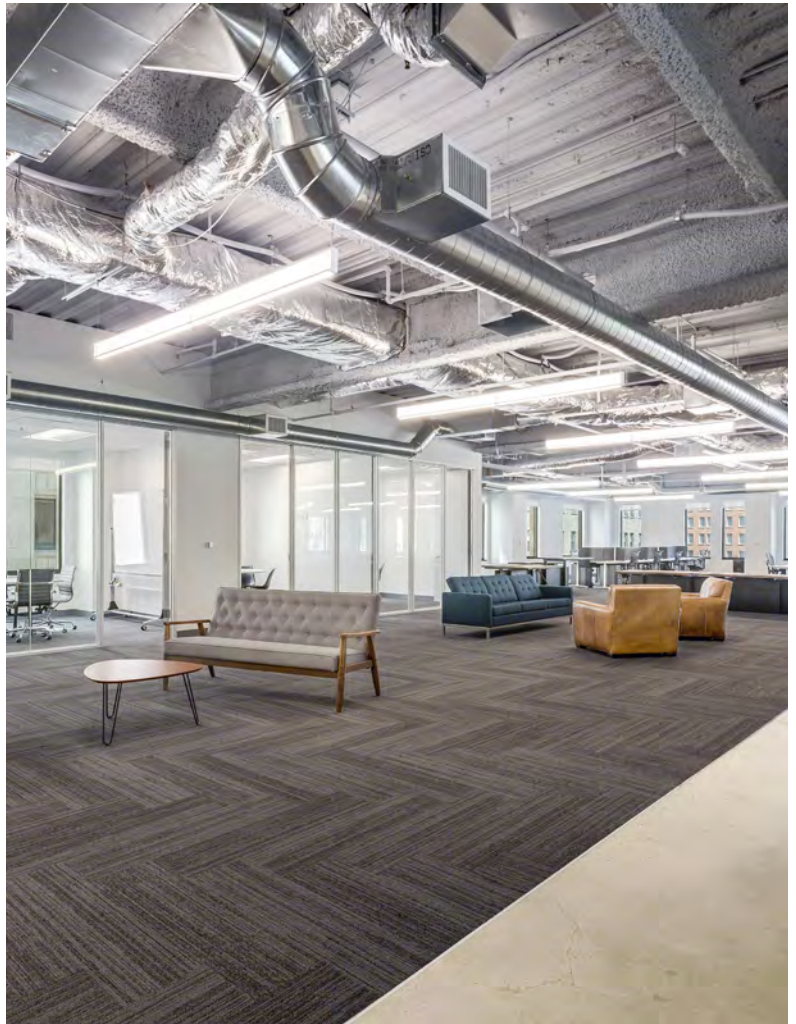
Matthew D. Shewey
Senior Managing Director
+1 415 395 7255
matt.shewey@jll.com
RE License # 01445125

Charlie Hanafin
Senior Vice President
+1 415 395 4951
charlie.hanafin@jll.com
RE License # 01996121

Lexi Castellino
Associate
+1 650 400 8344
lexi.castellino@jll.com
RE License # 02221002

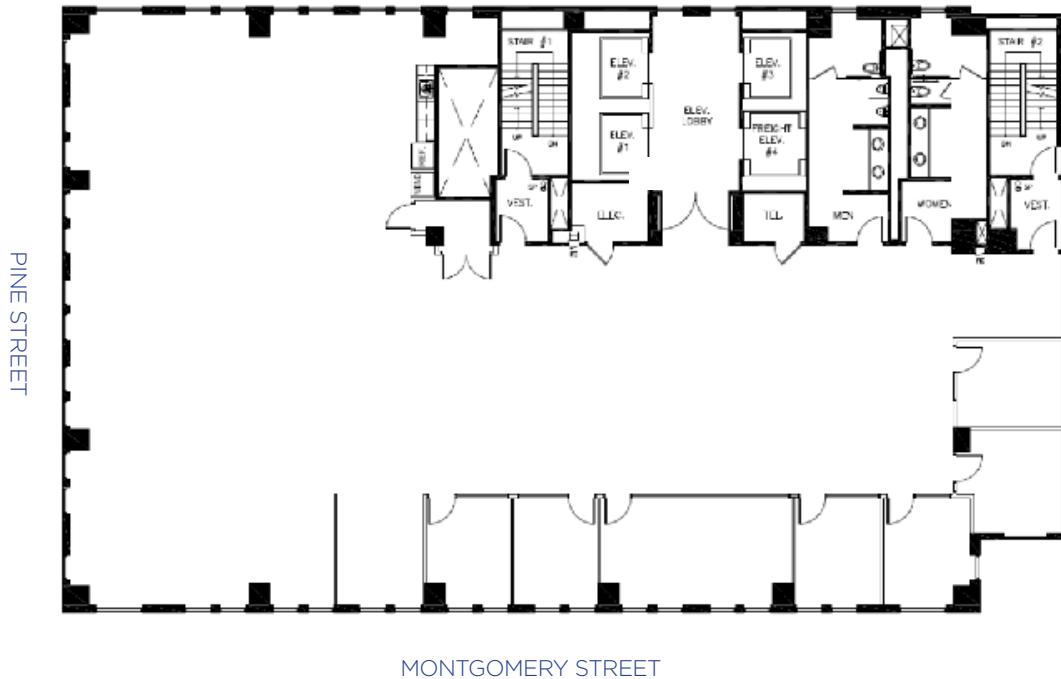


Suite: 800



250 MONTGOMERY
STREET

Suite: 1000



Floor Information

- 7,605 RSF
- Available now
- 2nd-gen creative spec suite
- Can be fully furnished
- 1 Large & 6 medium meeting rooms
- Good outlooks & natural light

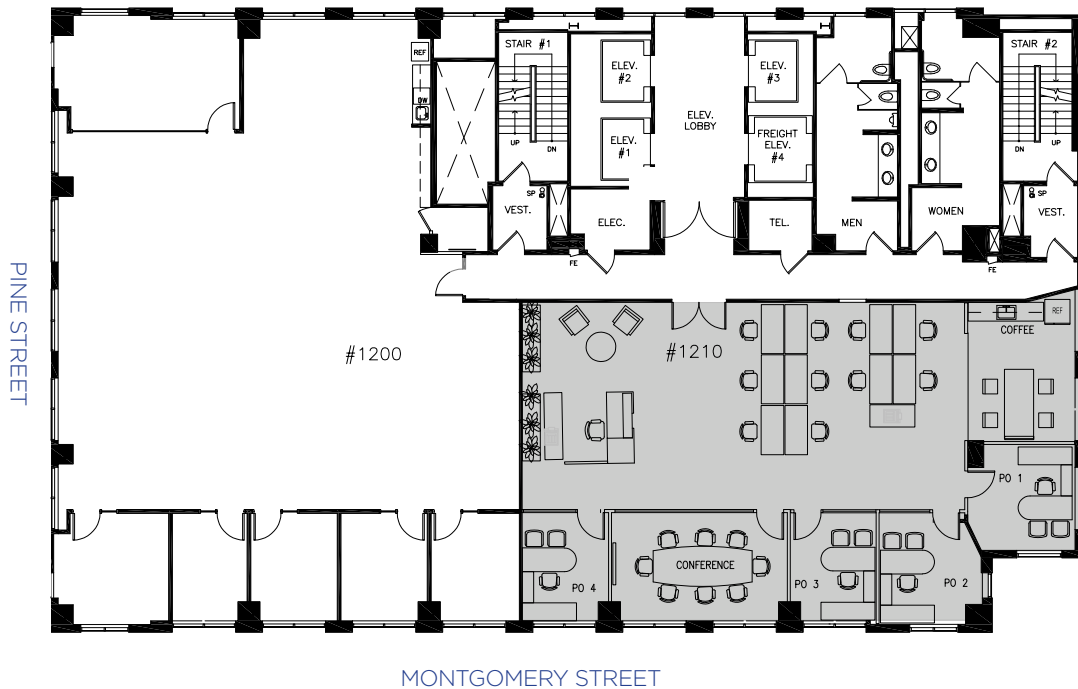
CONTACT

Matthew D. Shewey
Senior Managing Director
+1 415 395 7255
matt.shewey@jll.com
RE License # 01445125

Charlie Hanafin
Senior Vice President
+1 415 395 4951
charlie.hanafin@jll.com
RE License # 01996121

Lexi Castellino
Associate
+1 650 400 8344
lexi.castellino@jll.com
RE License # 02221002





Floor Information

- 4,584 RSF
- Available now
- 5 Private offices
- 1 Conference room
- Partially furnished
- Updated kitchen

CONTACT

Matthew D. Shewey
Senior Managing Director
+1 415 395 7255
matt.shewey@jll.com
RE License # 01445125

Charlie Hanafin
Senior Vice President
+1 415 395 4951
charlie.hanafin@jll.com
RE License # 01996121

Lexi Castellino
Associate
+1 650 400 8344
lexi.castellino@jll.com
RE License # 02221002







[Take Virtual Tour](#)

Floor Information

- 7,372 RSF
- Available now
- Open plan
- Kitchen
- Large double-height boardroom
- 8 Various sized private offices / meeting rooms
- 3 Exclusive balconies / decks

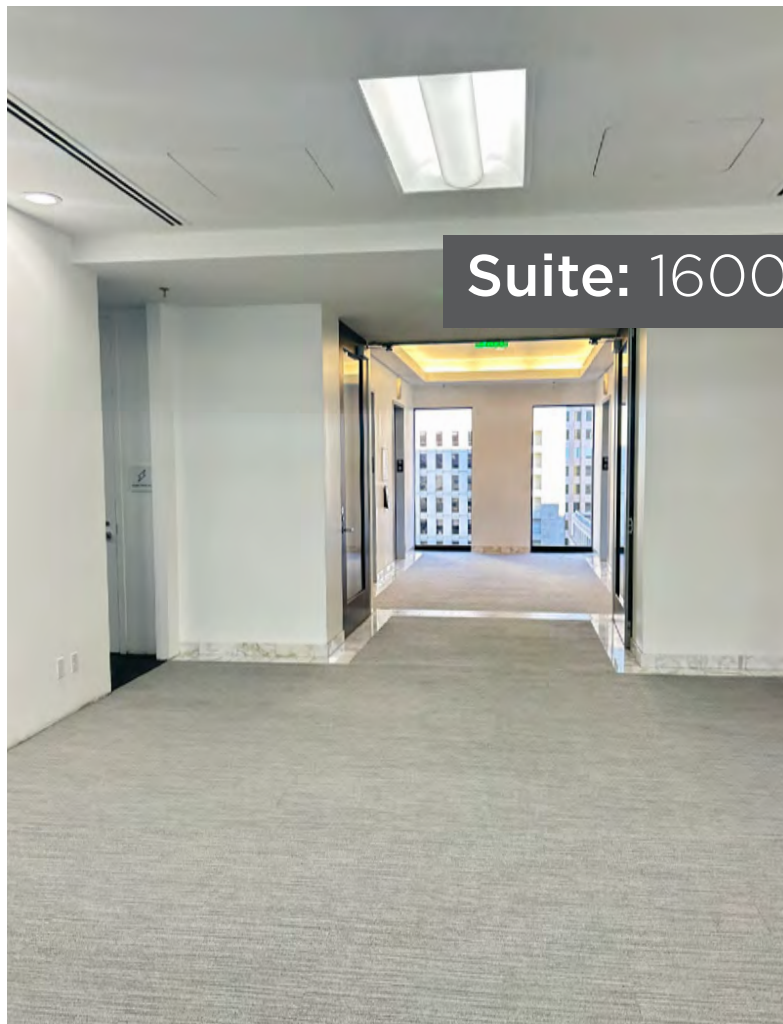
CONTACT

Matthew D. Shewey
Senior Managing Director
+1 415 395 7255
matt.shewey@jll.com
RE License # 01445125

Charlie Hanafin
Senior Vice President
+1 415 395 4951
charlie.hanafin@jll.com
RE License # 01996121

Lexi Castellino
Associate
+1 650 400 8344
lexi.castellino@jll.com
RE License # 02221002







250 MONTGOMERY
STREET



CONTACT

Matthew D. Shewey
Senior Managing Director
+1 415 395 7255
matt.shewey@jll.com
RE License # 01445125

Charlie Hanafin
Senior Vice President
+1 415 395 4951
charlie.hanafin@jll.com
RE License # 01996121

Lexi Castellino
Associate
+1 650 400 8344
lexi.castellino@jll.com
RE License # 02221002

