

# FOR LEASE

**2001**  
**MEYER WAY**  
FAIRFIELD, CA



**±4,000 SF - ±15,757 SF OF QUALITY, FULLY FURNISHED OFFICE SPACE**

**FIRST FLOOR: ±5,157 SF and ±6,600 SF - Combined for ±11,757 SF    SECOND FLOOR: ±4,000 SF**

- Quality office improvements throughout and fully furnished
- Kitchen / lunch room facilities on each floor
- Convenient location and access to I-80 and Highway 12
- Available immediately



Jones Lang LaSalle Brokerage, Inc.  
CA RE License #01856260

# FIRST FLOOR PLAN

±11,757 SF - AVAILABLE

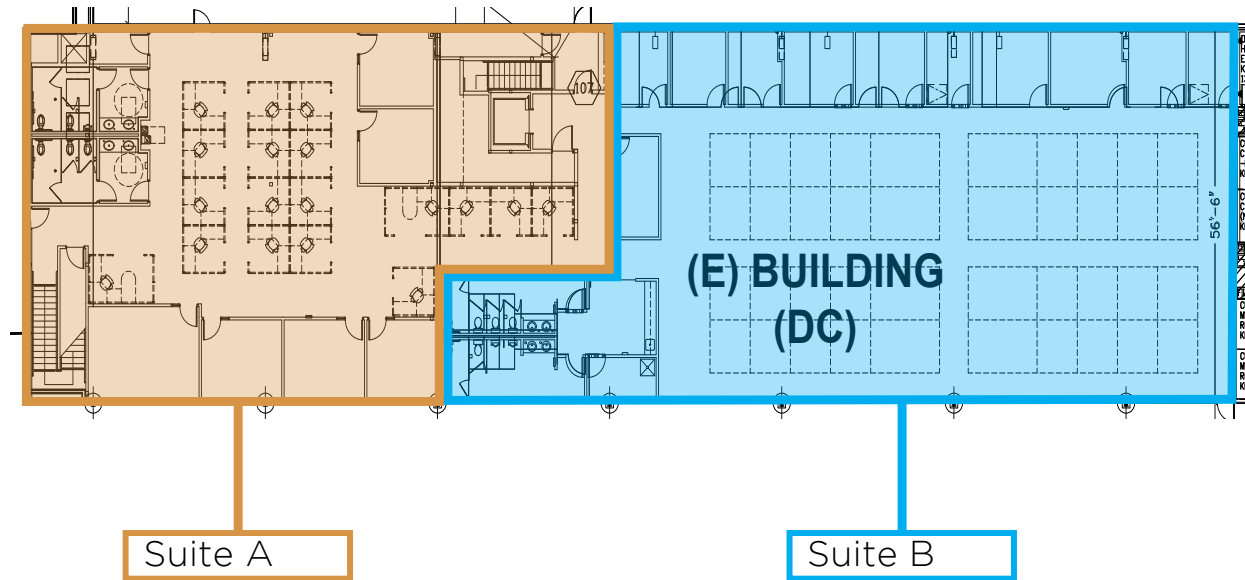


Suite A: ±5,157 SF

- 6 private offices
- 18 cubes

Suite B: ±6,600 SF

- 8 private offices
- 40 cubes



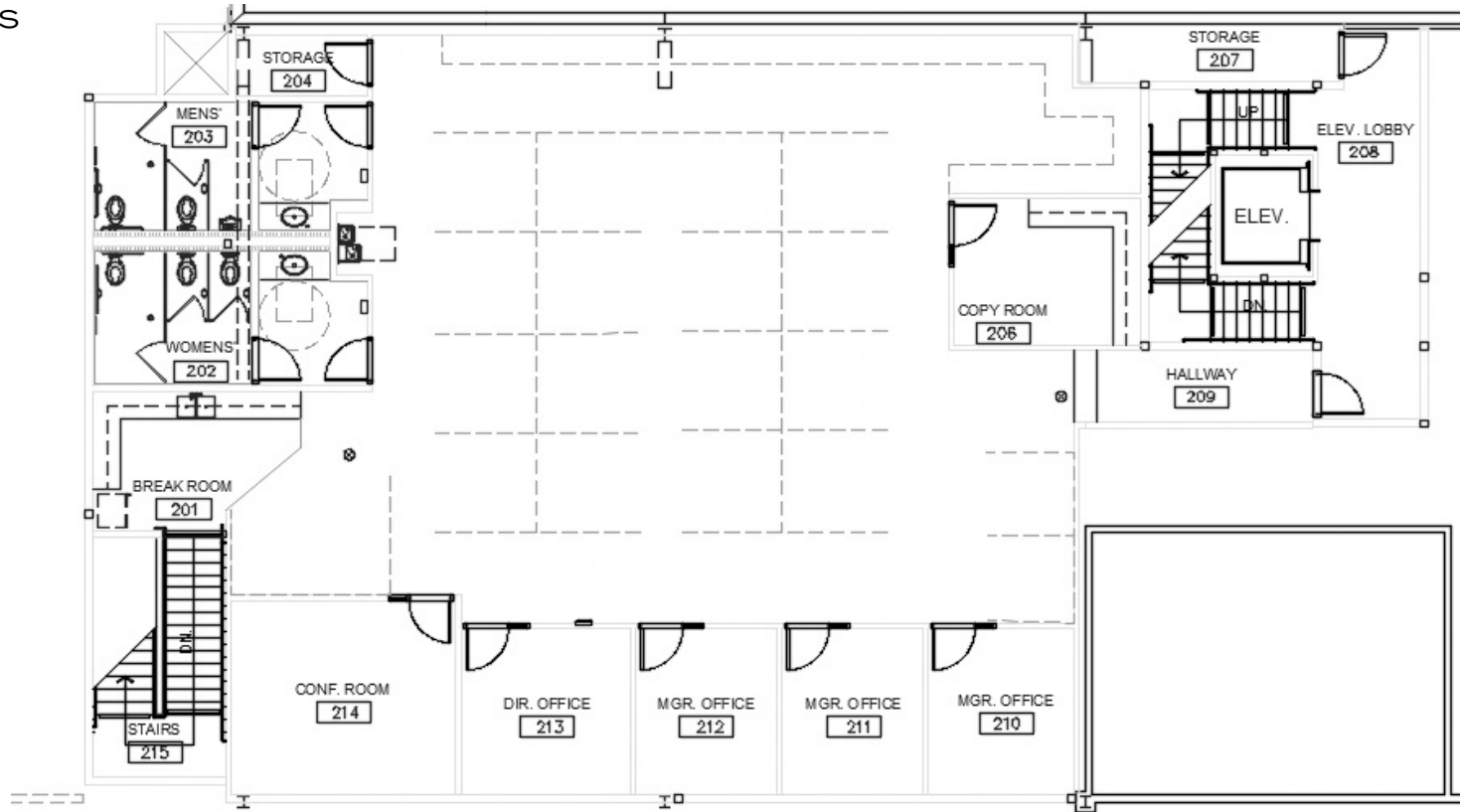
# SECOND FLOOR PLAN

±4,000 SF - AVAILABLE



Suite C: ±4,000 SF

- 6 private offices
- 18 cubes



# INTERIOR PHOTOS

FULLY FURNISHED, QUALITY OFFICE SPACE

2001

MEYER WAY

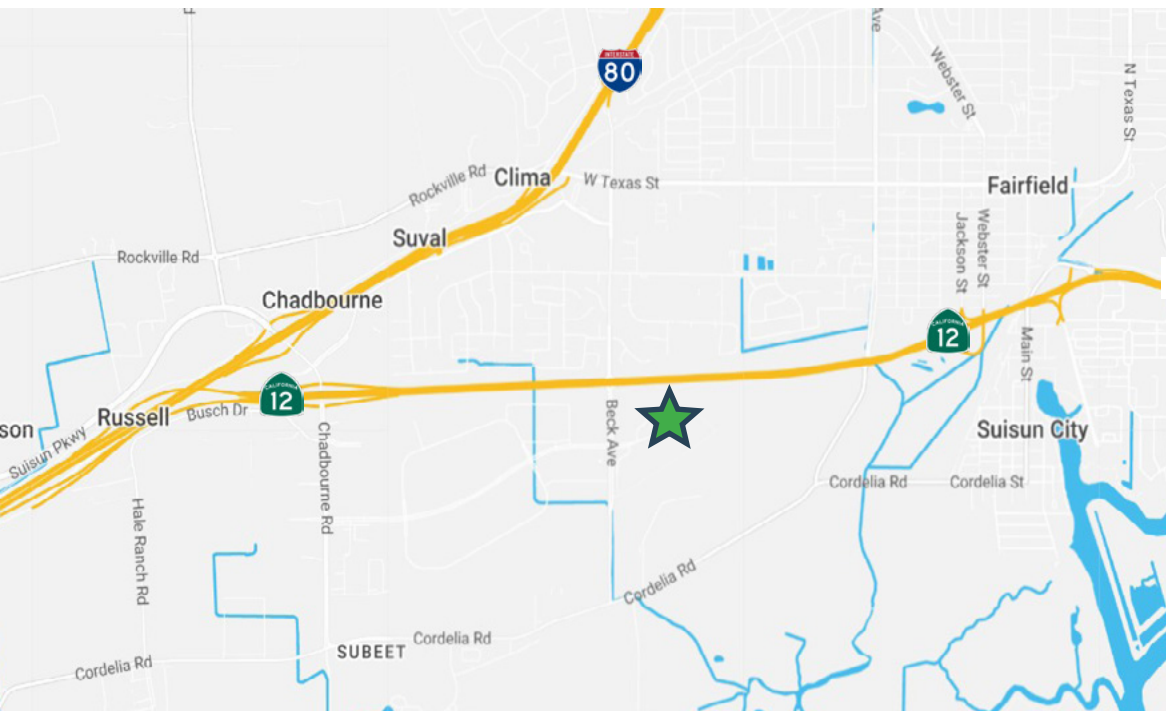
FAIRFIELD, CA



Although information has been obtained from sources deemed reliable, neither Owner nor JLL makes any guarantees, warranties or representations, express or implied, as to the completeness or accuracy as to the information contained herein. Any projections, opinions, assumptions or estimates used are for example only. There may be differences between projected and actual results, and those differences may be material. The Property may be withdrawn without notice. Neither Owner nor JLL accepts any liability for any loss or damage suffered by any party resulting from reliance on this information. If the recipient of this information has signed a confidentiality agreement regarding this matter, this information is subject to the terms of that agreement. ©2026. Jones Lang LaSalle IP, Inc. All rights reserved. Jones Lang LaSalle Brokerage, Inc. RE Lic# 01856260

# LOCATION

2001 Meyer Way is strategically located less than one mile from the Highway 12 on-ramp at Beck Ave in Fairfield. The property offers tenants outstanding retail amenities within a short driving distance from the site, including shopping, dining, and fitness amenities. As the county seat of Solano County, Fairfield provides significant regional advantages. The area features some of the most affordable housing in the nine-county Bay Area, a robust and accessible labor pool, and a population of over 1.86 million residents within a 30-mile radius. Known for its strong sense of community and high quality of life, Fairfield offers a desirable setting while remaining just a short drive from the major urban centers of San Francisco and Sacramento.



## SOLANO COUNTY DEMOGRAPHIC SNAPSHOT



**458,680**  
Population



**\$91,478**  
Median Household  
Income



**38.3**  
Median Age



**12,574**  
Total Businesses



**140,382**  
Total Employees



**30.8%**  
Bachelor's Degree

# NEARBY AMENITIES

CONVENIENT ACCESS TO HIGHWAY 12 & INTERSTATE 80



**2001**  
**MEYER WAY**  
FAIRFIELD, CA

**GLEN DOWLING**

RE License #00890450  
glen.dowling@jll.com  
+1 707 227 7800

**CHRIS NEEB**

RE License #01324612  
chris.neeb@jll.com  
+1 707 495 7777

**MATT BRACCO**

RE License #01185434  
matt.bracco@jll.com  
+1 925 200 3537



Jones Lang LaSalle Brokerage, Inc.  
CA RE License #01856260