




# For lease

6410 Eastland Rd, Brook Park, OH

 **JLL** SEE A BRIGHTER WAY

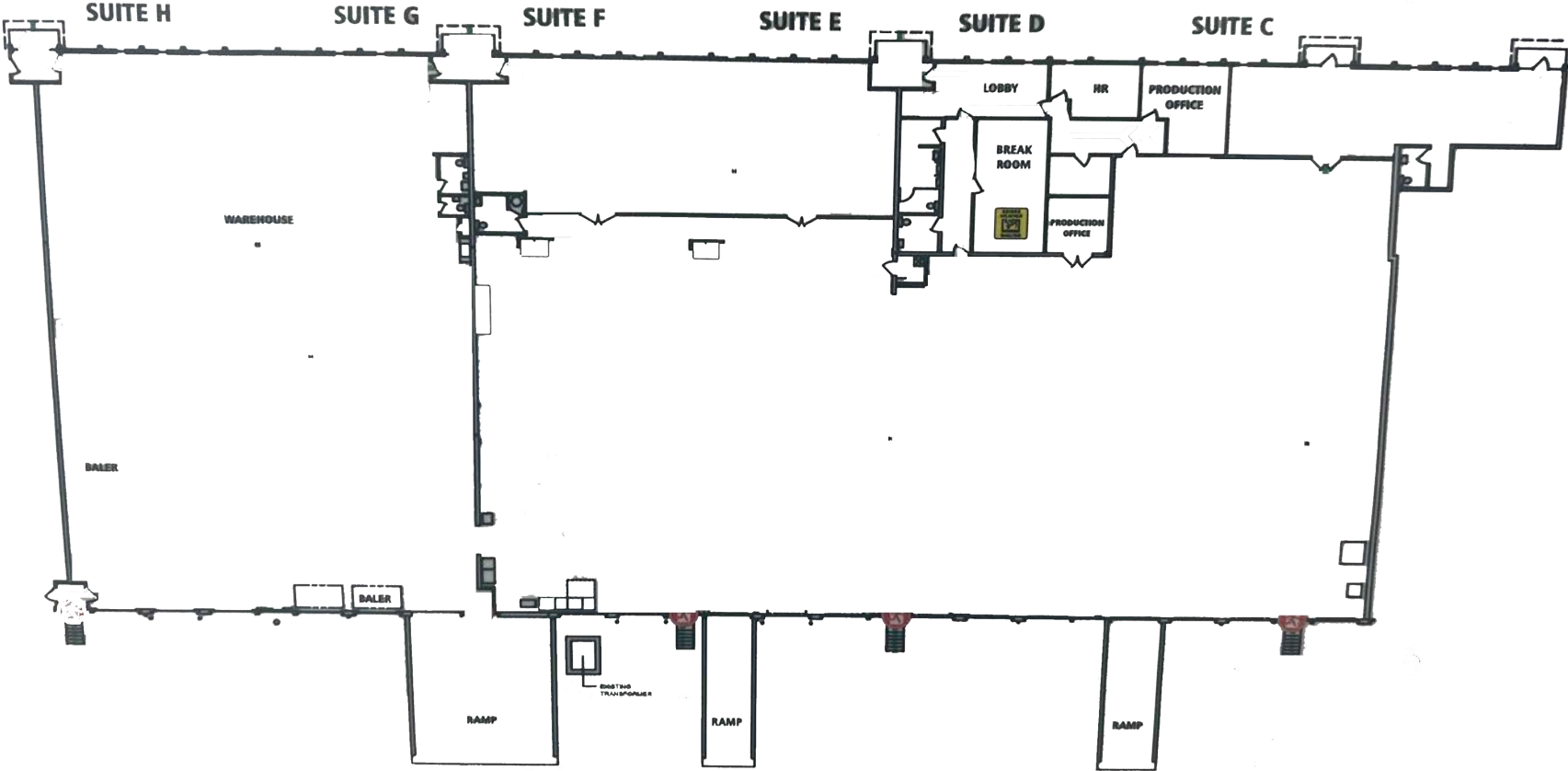
## Property Highlights

- 32,393 sq ft
- Minimum divisible: +/- 9,770 sq ft
- 13 docks, 3 drive in doors
- 16' ceilings
- Fully air conditioned
- Approximately 3,000 sq ft office
- Heavy power 480v, 1,600amps, 3 phase, 4 wire
- Easy access to I-480, I-71, and Cleveland Hopkins Airport
- \$6.95/sq ft NNN



|                               | 1 mile   | 3 miles  | 5 miles   |
|-------------------------------|----------|----------|-----------|
| <b>Total population</b>       | 3,908    | 54,073   | 204,588   |
| <b>Daytime population</b>     | 8,289    | 72,504   | 203,962   |
| <b>Total households</b>       | 1,713    | 23,133   | 91,063    |
| <b>Est. Average HH income</b> | \$80,909 | \$92,039 | \$100,973 |

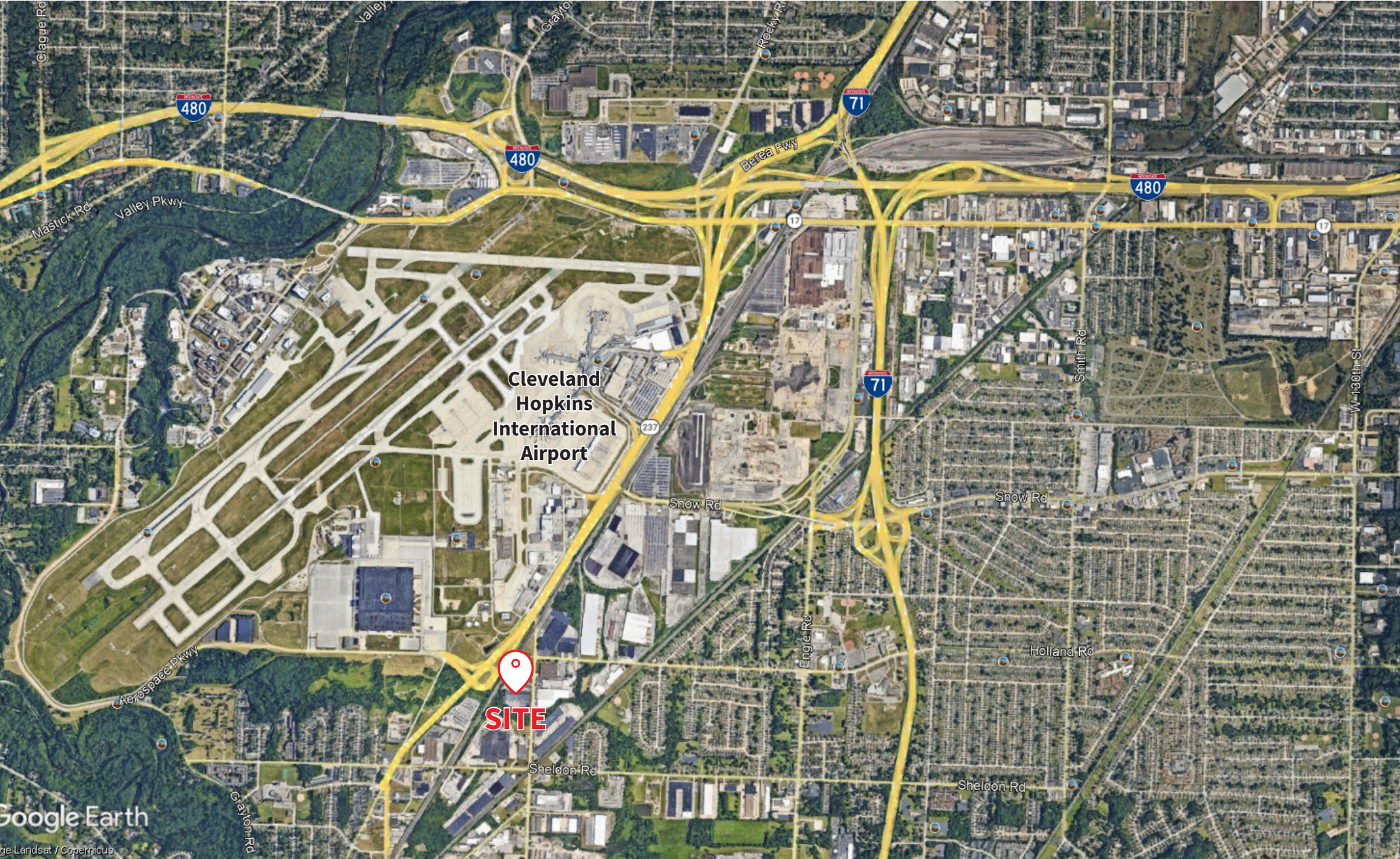
# Floor plan



# Property photos



# Location



**JLL****Kristy Peters, SIOR***Senior Vice President*[kristy.peters@jll.com](mailto:kristy.peters@jll.com)

+1 (440) 226 1550

**Sam Everson***Associate*[samuel.everson@jll.com](mailto:samuel.everson@jll.com)

+1 (440) 503 1150