

Sublease

7,366 Sq. Ft.



SEE A BRIGHTER WAY

171 John Street

Premium Full Floor Brick and Beam Turnkey
Suite 500 - 7,366 Sq. Ft.

Toronto, ON




jll.com

Spectacular Full Floor Turnkey Brick and Beam Sublease

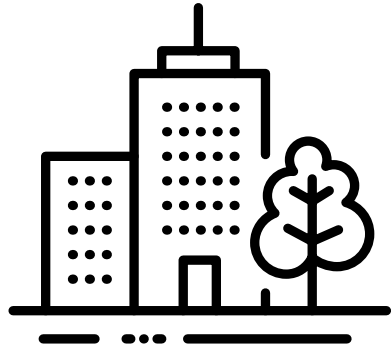


Welcome to the unique, brick and beam full-floor sublease opportunity at 171 John Street. Located in the lively intersection of McCaul and Queen, this neighborhood provides employees with convenient access to entertainment and transportation amenities. The office is steps from bakeries, restaurants, hotels, Osgoode Subway station, and Queen Streetcar. The office space is beautifully built-out showcasing the heritage brick-and-beam aesthetic while providing a high performance environment and a rooftop patio fully equipped with wireless internet for employees to live, work and play and a WiFi-enabled furnished rooftop patio for employees to enjoy.

Property Specifications

-  5th Floor - 7,366 SF
-  Expiry: Feb 29th, 2032
-  Timing: Immediate
-  Furniture: Negotiable
-  Semi Gross Rent (PSF): Please contact listing agents
-  Steps from Queen Streetcar and various retail amenities

Space Highlights



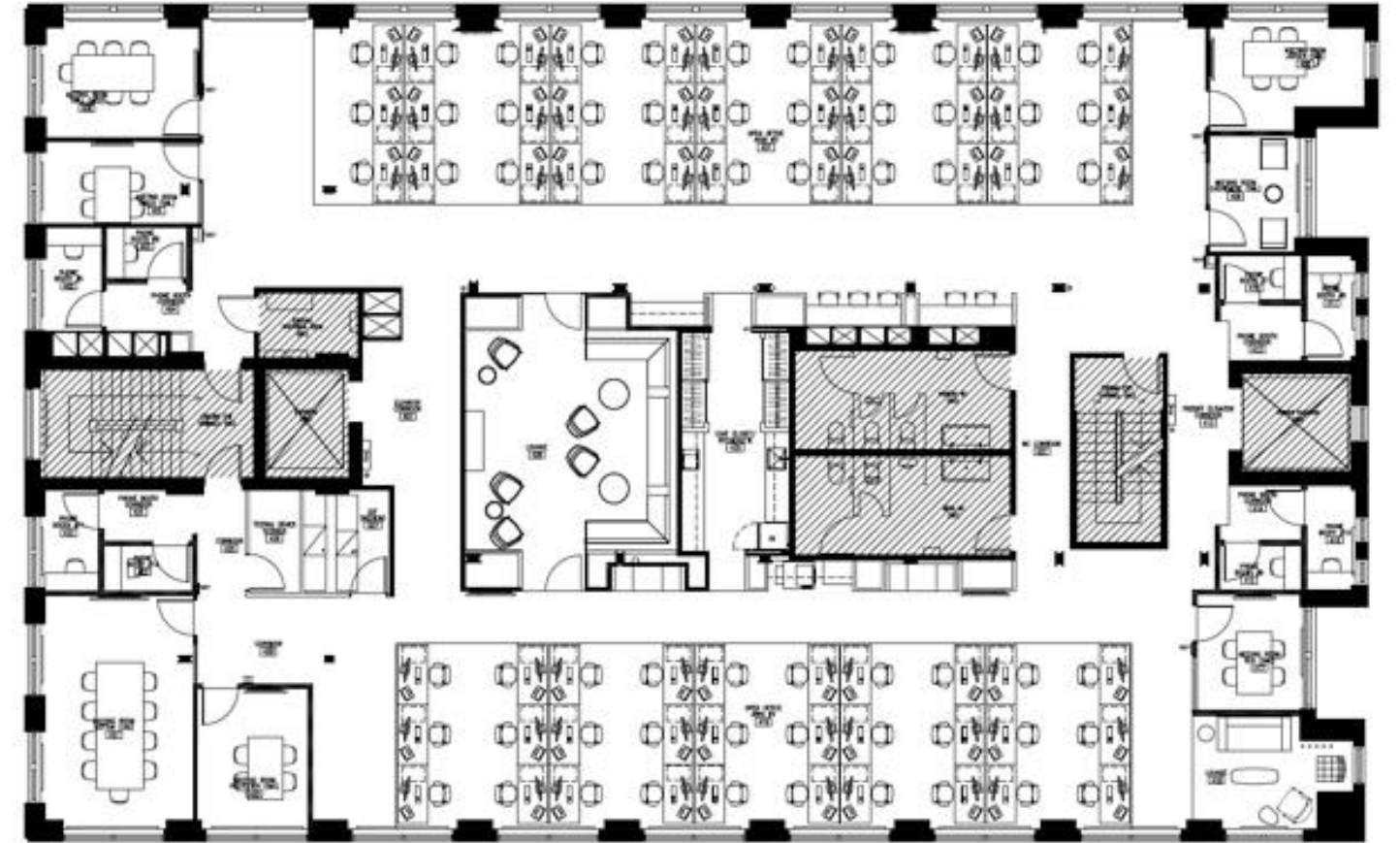
- Fully turnkey suite with modern, high-end leasehold improvements throughout the premises.
- Full floor opportunity with direct entry elevator in a boutique brick and beam building.
- Panoramic rooftop terrace
- Suite features hardwood floors and high exposed ceilings.
- Steps to Queen Streetcar and Osgoode TTC Station.





5th Floor

Full Floor - 7,366 SF



171 John Street

Toronto, ON

Thank you

We can support you with expert advice
that reflects your business needs
and priorities

Jon Pezim*
Executive Vice President
+1 (416) 304-6032
jon.pezim@jll.com

Adam Harun*
Senior Transaction Manager
+1 (416) 238-4806
adam.harun@jll.com

jll.com

© 2024 Jones Lang LaSalle IP, Inc. All rights reserved. Information set out herein (the "Information") has not been verified by Jones Lang LaSalle Real Estate Services, Inc., Brokerage and any and all of its real estate agents/staff, and to all other divisions of the company (collectively "JLL"). JLL does not represent, warrant or guarantee the accuracy, correctness and completeness of the Information. Given the limitations of the investigations, inquiries and verification that JLL have undertaken, the reliability of this Information must be treated with a suitable degree of caution and neither JLL or any of their affiliates accept any liability or responsibility for the accuracy or completeness of the information contained herein and no reliance should be placed on the information contained in this document. JLL does not accept or assume any responsibility or liability, direct or consequential, for the Information or the recipient's reliance upon the Information. The recipient of the Information should take such steps as the recipient may deem necessary to verify the Information prior to placing any reliance upon the Information. The Information may change and any property described in the Information may be withdrawn from the market at any time without notice or obligation to the recipient from JLL.