

FOR SUBLEASE

26 SOHO ST.

TORONTO, ON

RENTAL RATE
REDUCTION



Turnkey Brick & Beam Space
Newly Updated, Furniture Available

SUITE 335/345 • SIZE: 1,511 SF



Suite 335/345

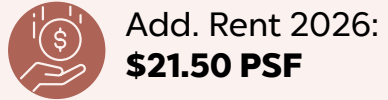
SIZE: 1,511 SF



Suite
335-345



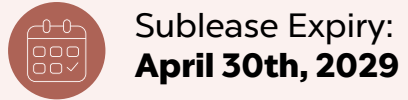
Size:
1,511 SF



Add. Rent 2026:
\$21.50 PSF



Asking Rent:
Please Contact Agents



Sublease Expiry:
April 30th, 2029



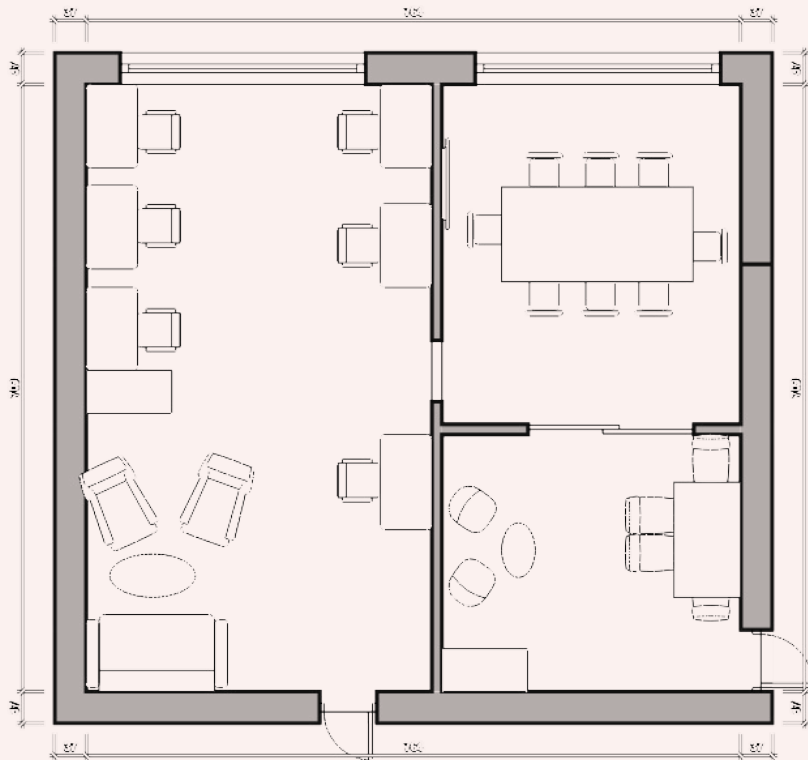
Furniture:
Available



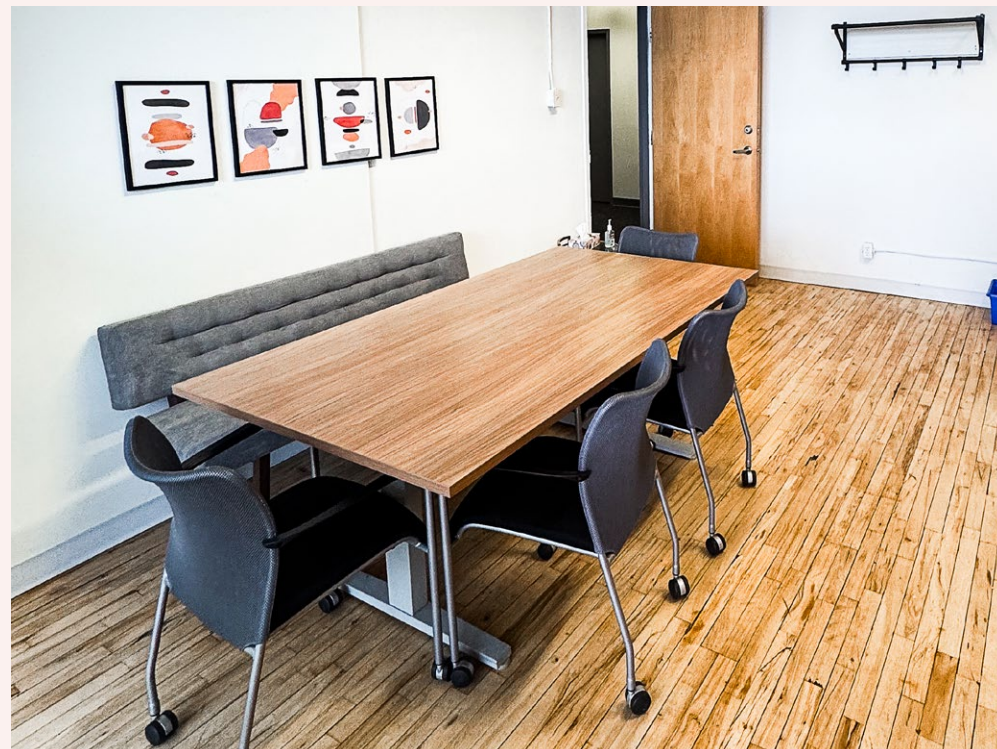
Rooftop
Patio

- Open space with 6 desks
- Lounge area
- Glass boardroom for 8 people
- Coffee station/meeting area.
- Lots of natural light

26 SOHO ST.

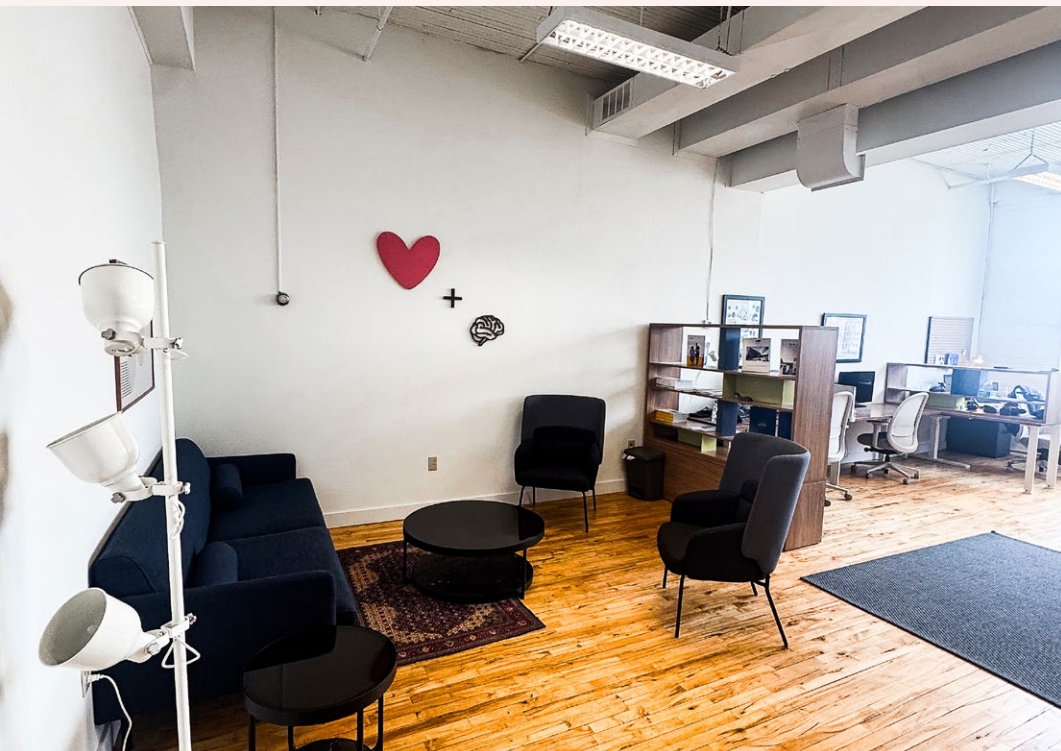


*not to scale





26 SOHO ST.



Turnkey Brick & Beam Space

Newly Updated, Furniture Available

SUITE 335/345 SIZE: 1,511 SF



FOR SUBLEASE

26 SOHO ST.

TORONTO, ON

Sean Cline*
SENIOR VICE PRESIDENT
sean.cline@jll.com
+1 (647) 920-2113

Kate Rizzardo*
ASSOCIATE
kate.rizzardo@jll.com
+1 (647) 464-5033

*Sales Representative

Although information contained herein has been obtained from sources deemed reliable, the owner, Jones Lang LaSalle Real Estate Services, Inc. ("JLL Canada"), and/or their representatives, brokers or agents make no guarantees as to the accuracy of the information contained herein, and offer the property/portfolio without express or implied warranties of any kind. The property/portfolio may be withdrawn without notice. If the recipient of this information has signed a confidentiality agreement regarding this matter, this information is subject to the terms of that agreement.

© 2025 JLL Canada. All rights reserved.

