

BELLAMY AGOURA

5045 Cornell Road | Agoura Hills, CA

**1,060 SF - 4,130 SF
RETAIL SPACE FOR LEASE**



PROPERTY HIGHLIGHTS

- Directly adjacent to the popular WHIZIN Market
- Brand new ground up apartment development by Greystar with 278 luxury units
- Freeway visible on Hwy 101 with over 171,000 cars per a day
- On-site parking (41 commercial stalls)
- Affluent trade area with Household Incomes of \$222,818 within 5 minutes
- Well positioned at the intersection of LA & Ventura counties, capturing consumer traffic from both markets
- Area benefits from a strong family demographic with highly-rated schools and family-friendly amenities driving demand for related services

SPACE DETAILS



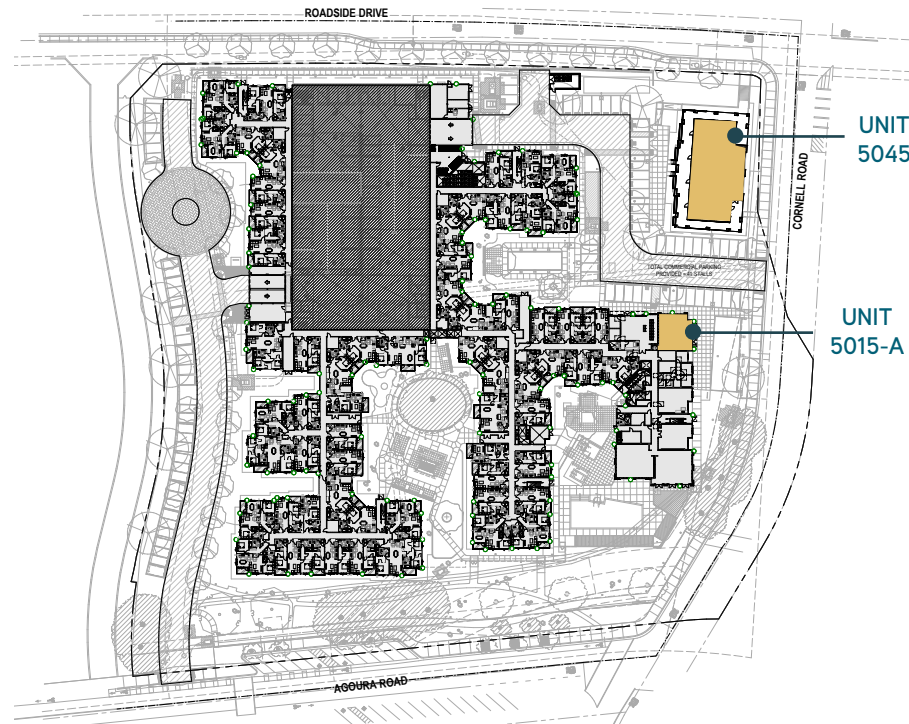
GLA
1,060 SF-
4,130 SF



RENT
Upon
Request

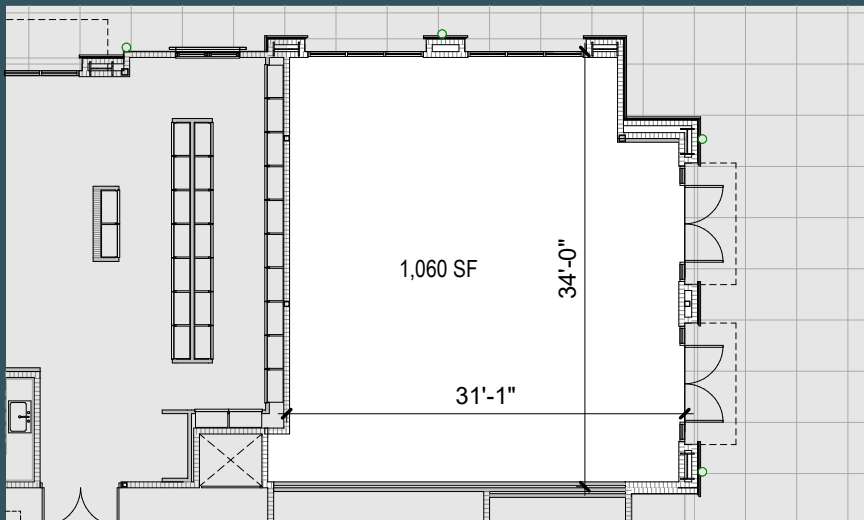
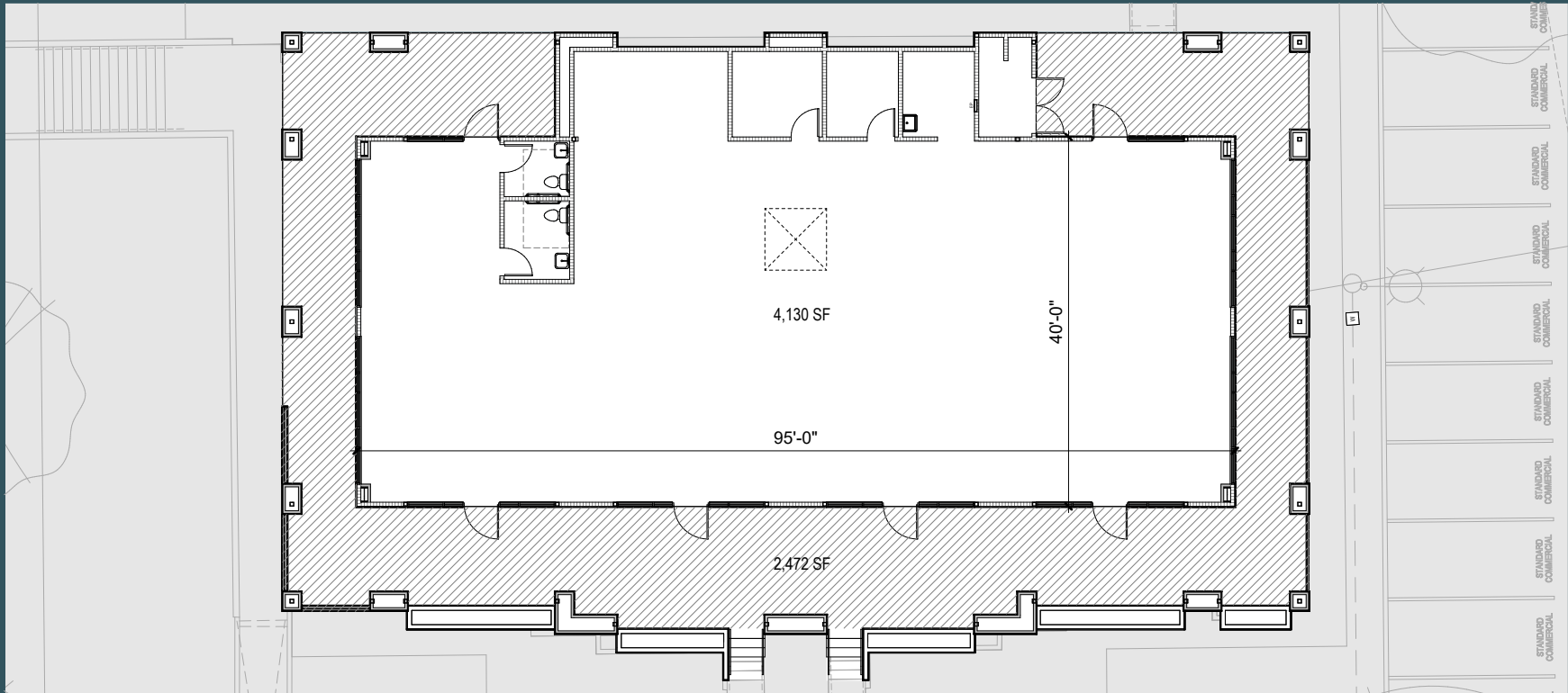


AVAILABILITY
Summer
2027



 **AVAILABLE**

FLOOR PLANS



AVAILABILITIES

Unit	Size
5045	4,130 SF (can be demised)
5015-A	1,060 SF



LOCAL DEMOGRAPHICS

DRIVE TIMES	5 min	10 min	15 min
Population			
Total	11,113	33,118	70,247
HH & Income			
Total Households	5,318	43,161	116,938
Avg. HH Income	\$222,818	\$197,548	\$199,400
Consumer Spending			
Retail Expenditure	\$362.8M	\$3.32B	\$9.1B



REGIONAL MAP

BELLAMY AGOURA

5045 Cornell Road | Agoura Hills, CA

BLAKE KAPLAN

Managing Director

Lic. #02001158

Tel +1 909 702 3367

blake.kaplan@jll.com

DREW OLSON

Vice President

Lic. #02051219

+1 949 870 0565

drew.olson@jll.com

ERIK WESTEDT

Managing Director

Lic. #01372758

Tel +1 213 545 4500

erik.westedt@jll.com

TATTIANNA SIDHOM

Associate

Lic. #02442184

Tel +1 323 404 7553

tattianna.sidhom@jll.com

Although information has been obtained from sources deemed reliable, neither Owner nor JLL makes any guarantees, warranties or representations, express or implied, as to the completeness or accuracy as to the information contained herein. Any projections, opinions, assumptions or estimates used are for example only. There may be differences between projected and actual results, and those differences may be material. The Property may be withdrawn without notice. Neither Owner nor JLL accepts any liability for any loss or damage suffered by any party resulting from reliance on this information. If the recipient of this information has signed a confidentiality agreement regarding this matter, this information is subject to the terms of that agreement. ©2026 Jones Lang LaSalle IP, Inc. All rights reserved. Corp Lic. 01856260

