



820 Central Ave

Highland Park, IL 60035



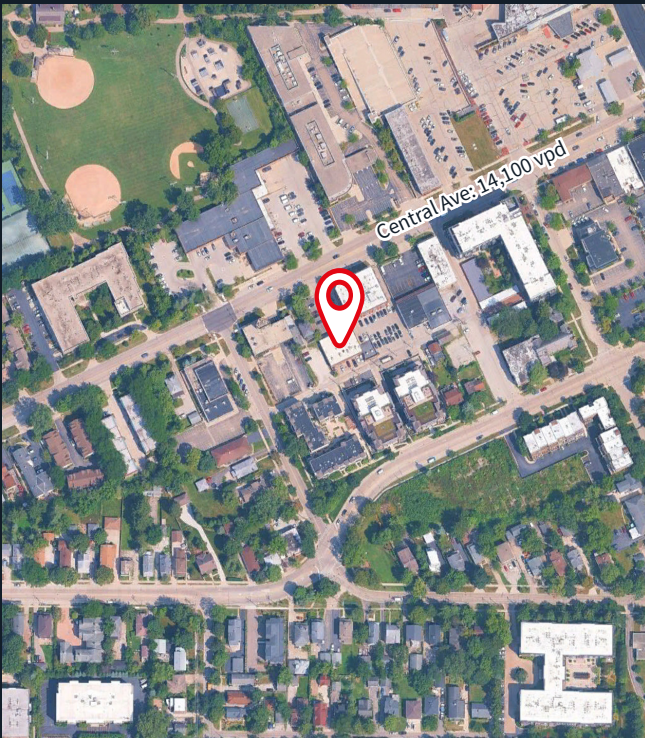
Steve Schwartz
Senior Vice President
+1 312 228 2157
steve.schwartz@jll.com

Natalie Belloff
Associate
+1 312 228 2008
natalie.belloff@jll.com



Property overview & demographics

- Former non-vented restaurant space with multiple restrooms in place offers
- Dedicated on-site parking with approximately 20 spaces provides convenience for customers
- Signage opportunities on the building's pillar offer prominent brand visibility to maximize exposure along this high-traffic corridor
- Situated along Central Avenue, Highland Park's main north-south corridor, the property delivers excellent visibility, consistent vehicular traffic, strong pedestrian flow from the walkable downtown, and convenient access from surrounding North Shore communities



| | |
|--------------------|--|
| Address | 820 Central Ave Highland Park, IL 60035 |
| Size | ≈ 1,340 SF |
| Asking rent | Upon request |
| Status | Vacant |
| Possession | Immediate |

Area retailers



ANTHROPOLOGIE

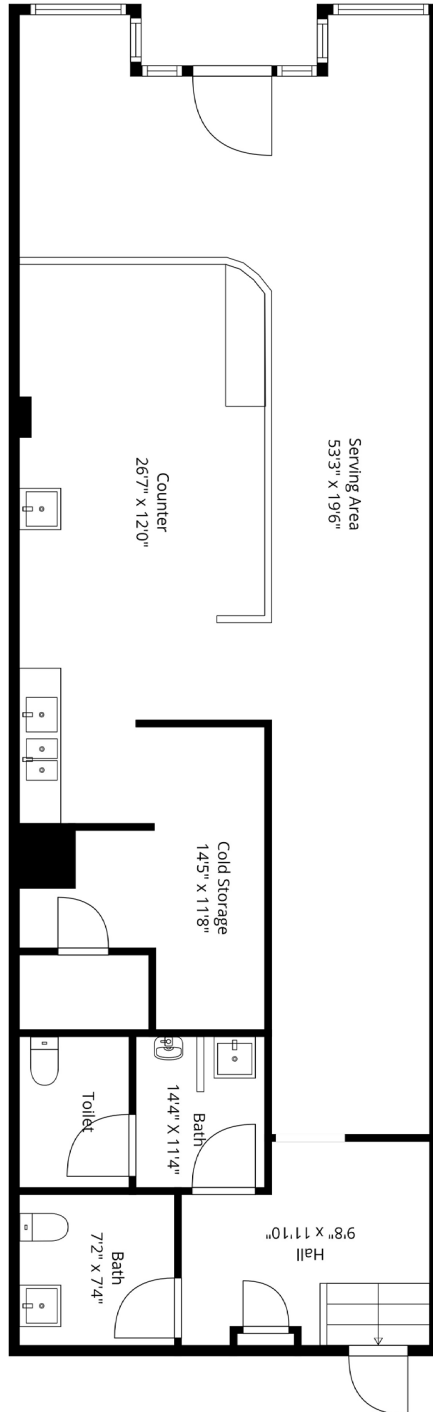
| | 1 mile | 3 miles | 5 miles |
|-----------------------------|-----------|-----------|-----------|
| Population | 8,788 | 50,417 | 107,255 |
| Daytime population | 13,922 | 64,455 | 151,180 |
| Avg household income | \$214,046 | \$236,498 | \$258,098 |
| Households | 3,903 | 19,818 | 40,488 |



Site plan

Central Ave: 14,100 vpd

Available
≈1,340 SF

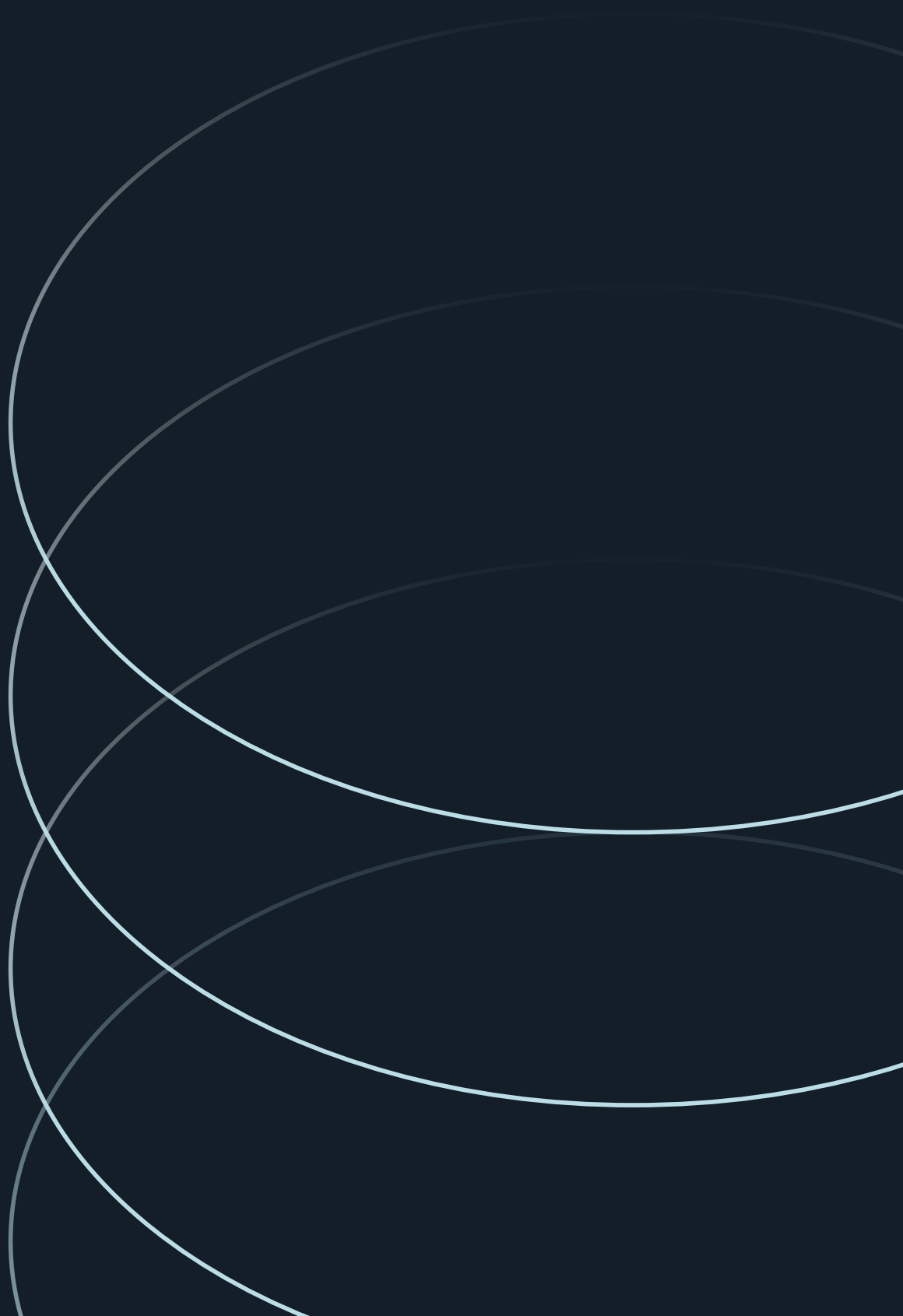


Highland Park, IL

Retail trade area



Map data © OpenStreetMap contributors, Imagery © Mapbox, © JLL. All rights reserved. JLL is not responsible for any errors or omissions in this map. The information is provided as a general guide only and should not be relied upon for any specific purpose. The information is provided as a general guide only and should not be relied upon for any specific purpose.



Steve Schwartz
Senior Vice President
+1 312 228 2157
steve.schwartz@jll.com

Natalie Belloff
Associate
+1 312 228 2008
natalie.belloff@jll.com