

For lease

±3.5 Acres with 8,400 SF Building
and 88 Trailer Stalls

750 Martin Street, Avenel, New Jersey



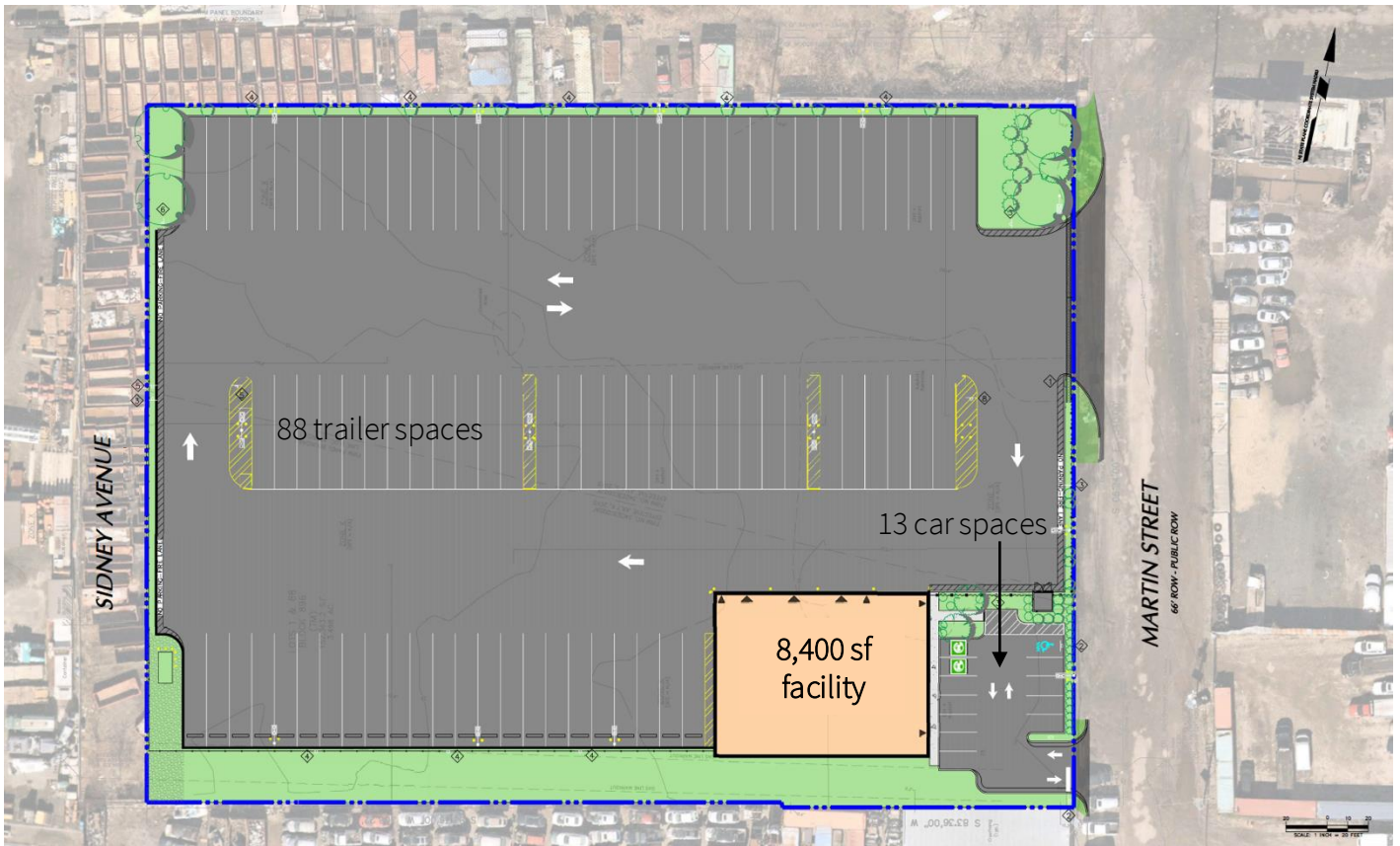
Gary Politi
Executive Managing Director
908.391.9059
gary.politi@jll.com

Michael Palmeri
Executive Vice President
908.361.2461
michael.palmeri@jll.com

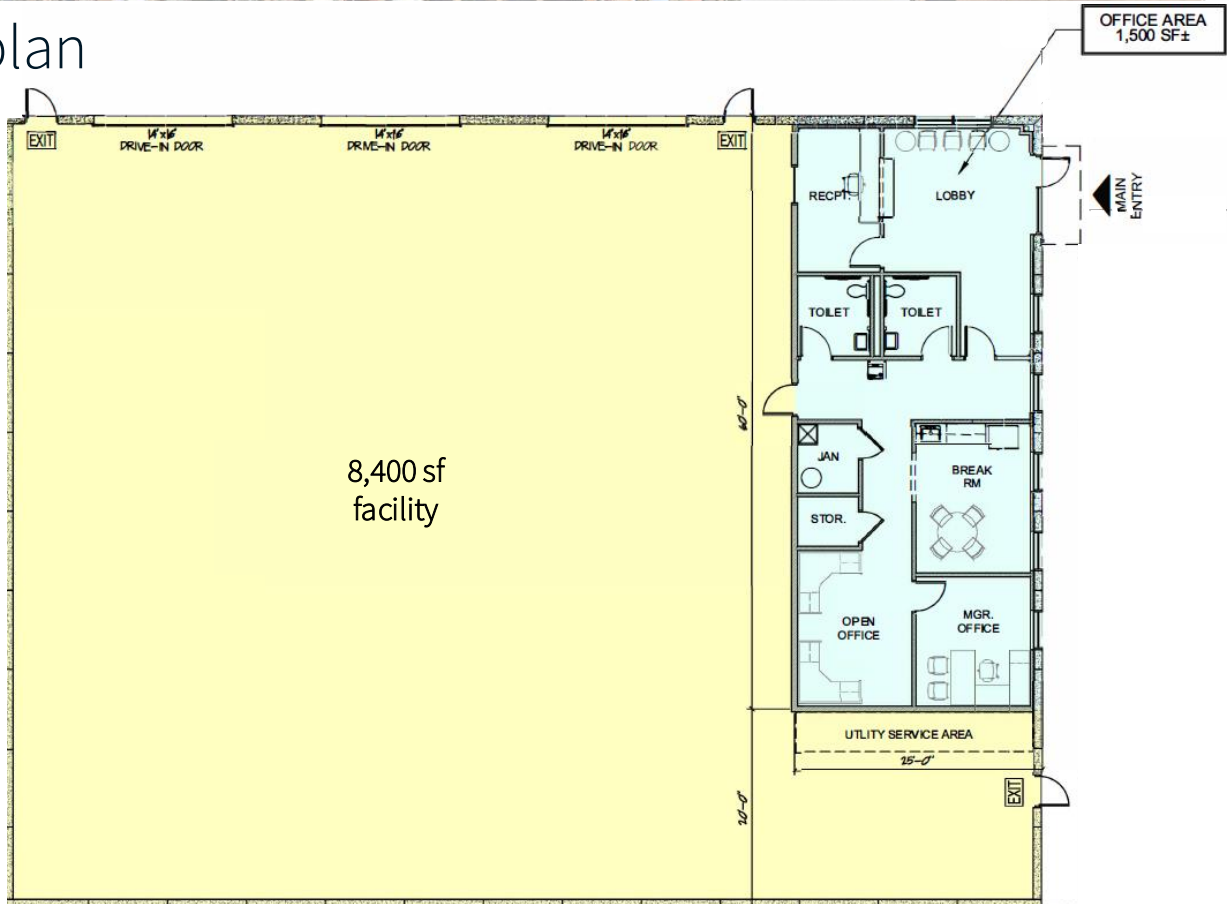


www.750martinst.com

Site plan



Floor plan



750 Martin Street, Avenel, New Jersey

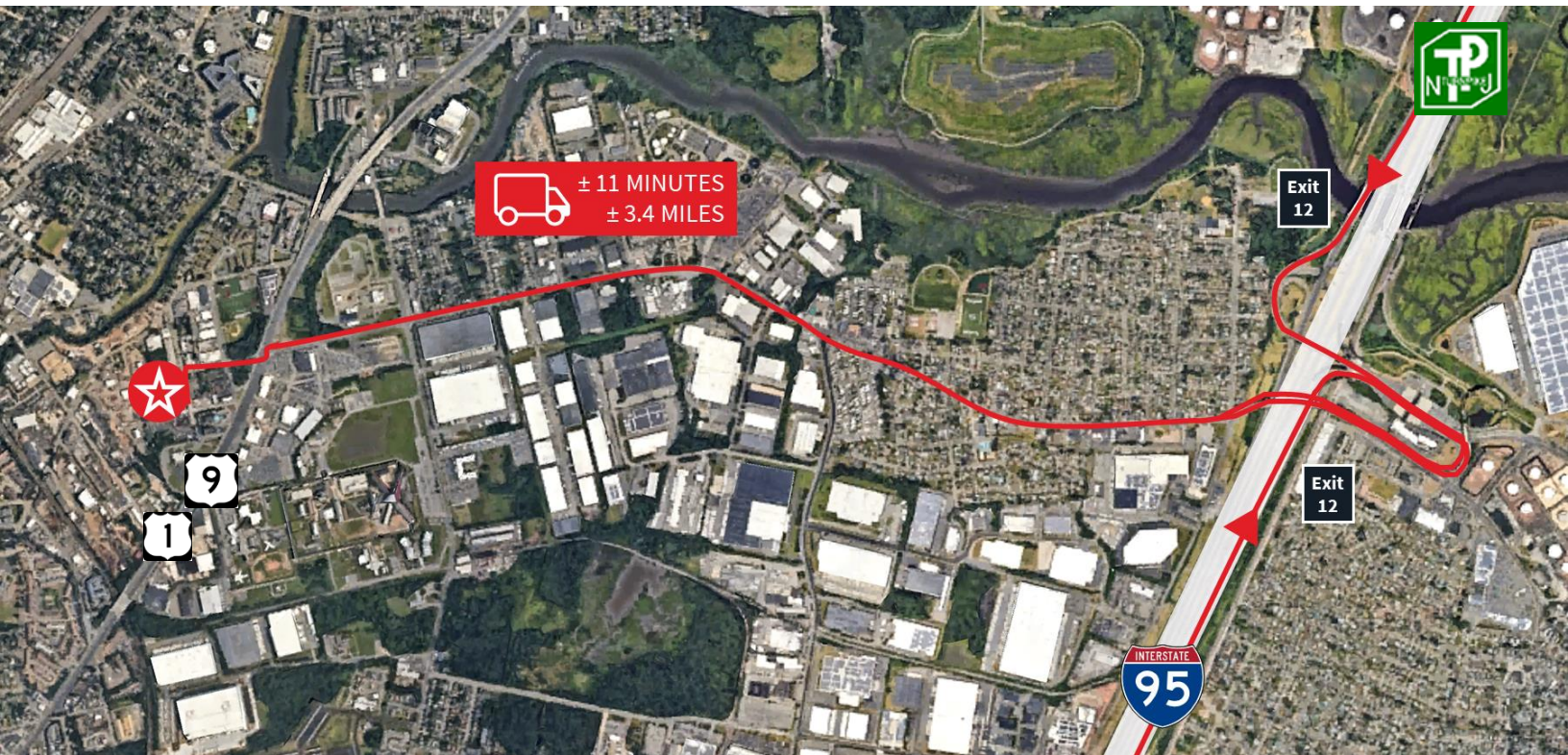
Property specifications

- ±3.5 acre parking area with an 8,400 sf building
- Parking lot to be paved, lit and fenced
- 24' clear ceiling height
- 88 trailer spaces, 13 car spaces
- Estimated delivery September 2026
- Three (3) 14' x 16' overhead doors
- Municipality plans to repave and improve roadway leading to the property

Permitted Uses

- Manufacturing and assembly
- Warehouse and distribution
- Fleet parking
- Vehicle maintenance and repair
- Electric vehicle fleet charging parking facilities
- Contractor yard
- Building materials yard
- Construction equipment sales
- Public utility, electric or gas sub station

Location map & key distances



.2 miles

Route 1&9 North & South
with traffic signal

3.4 miles

Exit 12 Interstate 95
New Jersey Turnpike

11 miles

Port Elizabeth/
Port Newark

ABOUT ELBERON

100 Years of Experience = **21ST** Century Solutions

Founded in 1920, Elberon Development Group brings a rich history of local expertise to the commercial real estate industry.

With a portfolio of over 3 million square feet in strategically located warehouse facilities in and around the Port of Elizabeth and Newark International Airport, Elberon Development Group continues to create buildings that meet the needs of an ever-evolving global economy.

HEADQUARTERS

633 Division Street, Elizabeth, NJ 07201



www.elberon.com



Gary Politi

Executive Managing Director
908.391.9059
gary.politi@jll.com

Michael Palmeri

Executive Vice President
908.361.2461
michael.palmeri@jll.com



www.750martinst.com