

500 washington

RETAIL SPACE FOR LEASE

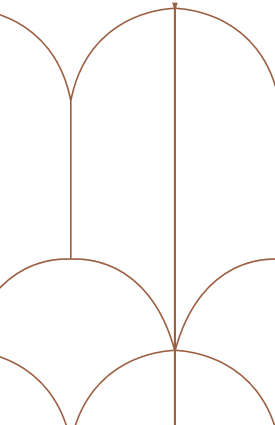
500 WASHINGTON STREET • SAN FRANCISCO

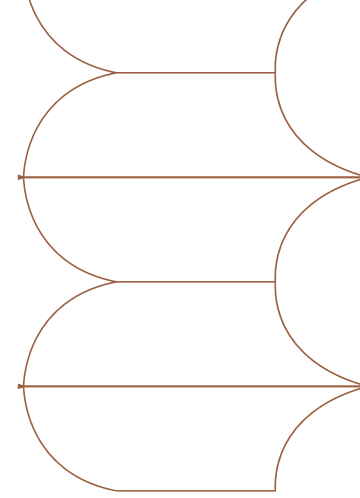


Welcome to Park Washington

JACKSON SQUARE'S NEW CHAPTER

Park Washington isn't just a building; it's a statement. This boutique office destination is crafted for those who dare to think differently—the creatives, the innovators, and the forward-thinkers who shape our future. Here, at the heart of San Francisco's rich tapestry of culture and commerce, we're writing the next chapter of Jackson Square's storied history.

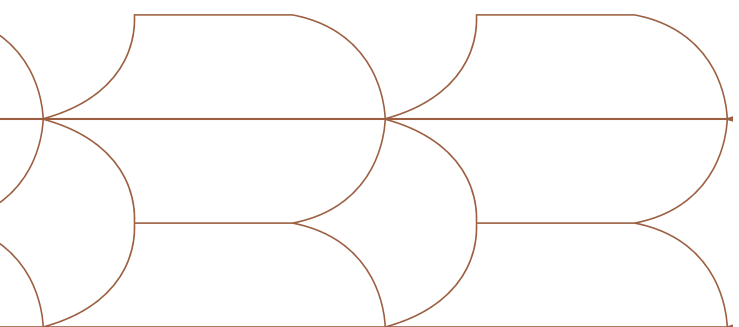




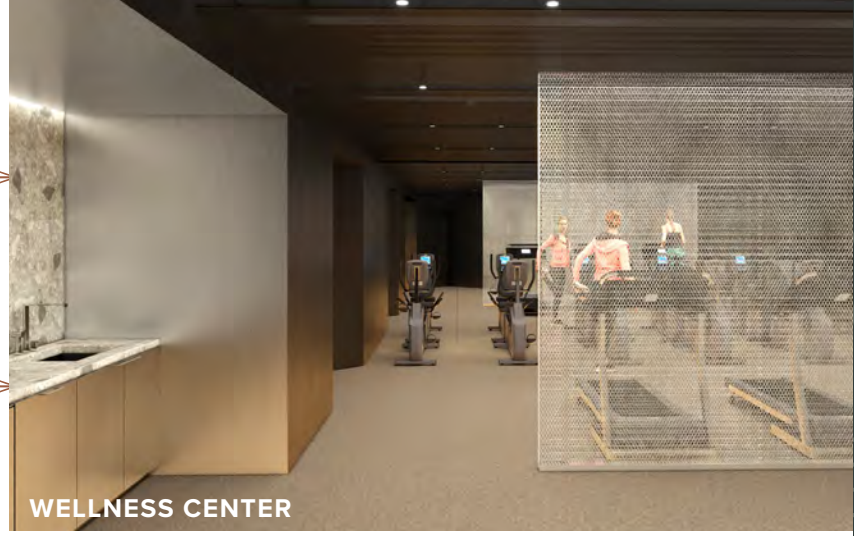
Office Reimagined

Park Washington is more than a workplace—it's a cultivated extension of daily life. Set within the fabric of Jackson Square's historic charm, it invites you to linger, to connect, and to recharge. Whether you're dining with colleagues, taking time to reflect between meetings, or moving seamlessly from work to wellness, Park Washington offers a concentrated blend of thoughtful amenities—cafés, bars, a gym, and gathering spaces—designed for those who seek more than just a desk.

It is a place to belong when you're not at home.



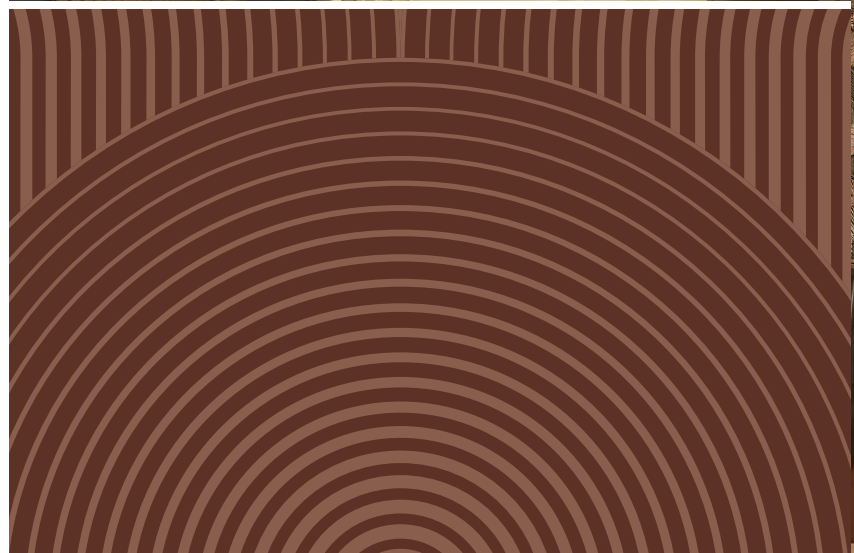
*Preliminary design subject to change



WELLNESS CENTER



EUREKA LOUNGE



RECEPTION

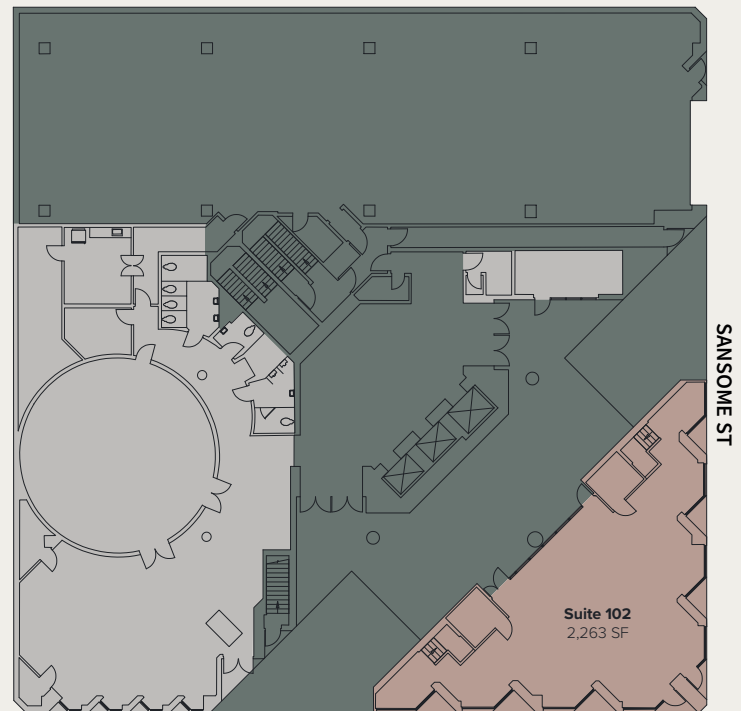


LOBBY

Availability

- Available Suites
- Lease Pending
- Not a Part

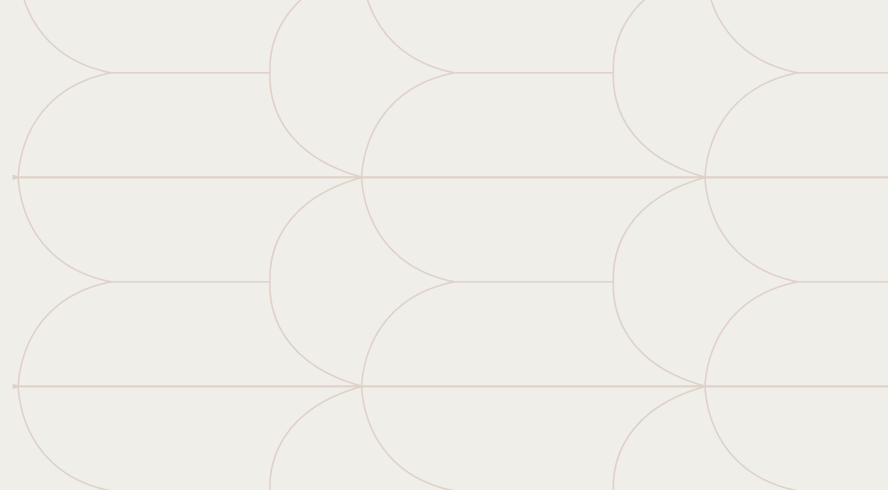
First Floor



Second Floor



Click on available suites to view the individual floor plan



99

WALK SCORE

8

MIN WALK to
Montgomery BART/MUNI

100

TRANSIT SCORE

8

MIN WALK to
Embarcadero BART/MUNI

87

BIKE SCORE

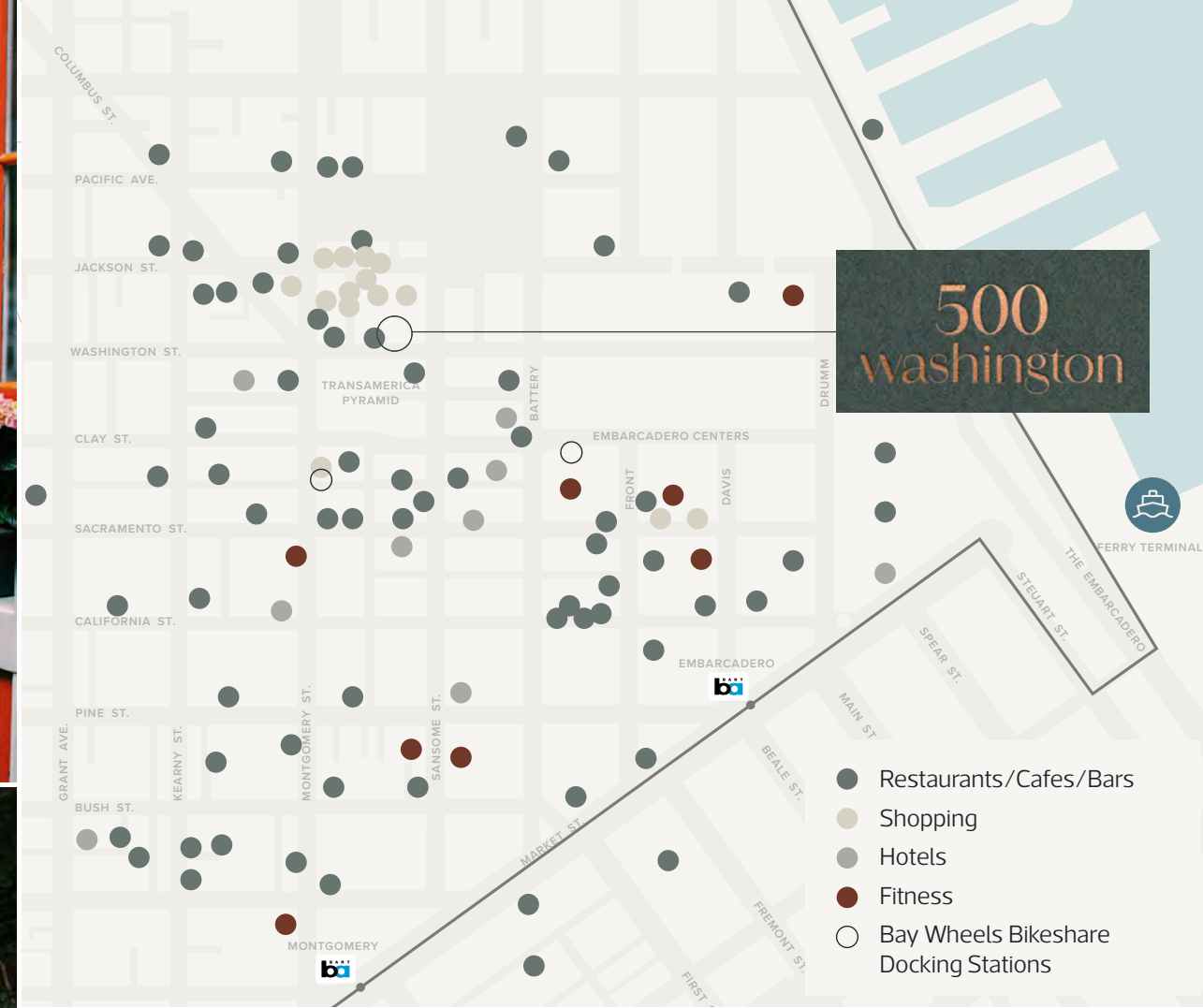
11

MIN WALK to the
Ferry Building

A Detailed Look at Jackson Square

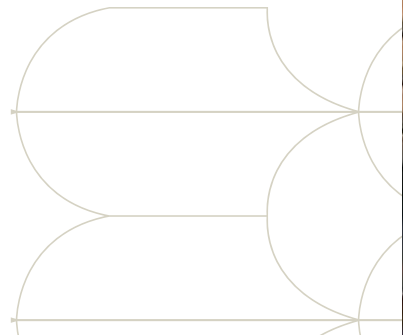
A charming blend of old and new, Jackson Square's tree-lined streets and quaint alleys provide a unique backdrop for a diverse community of businesses. The area has grown to host an eclectic mix of high-end boutiques, inviting restaurants, and creative design firms.

In recent years, Jackson Square has quietly become an attractive destination for emerging tech companies and venture capital firms. These businesses are drawn to the neighborhood's distinctive character and the inspiring spaces it offers—a refreshing alternative to conventional office environments.



About Brick & Timber Collective

Brick & Timber Collective is a San Francisco-based real estate development firm focused on the acquisition, renovation, and repositioning of properties uniquely suited for the venture capital, private equity, and startup community. Brick & Timber's portfolio contains many of San Francisco's most historically significant buildings. The firm focuses on creating spaces that honor the historic character of the original structure while simultaneously utilizing architectural materials and technology to produce an avant-garde experience.



THERE'S A TREMENDOUS
AMOUNT OF
CRAFTSMANSHIP
BETWEEN A GREAT IDEA
AND A GREAT PRODUCT
AND TO EVOLVE THAT
GREAT IDEA IT CHANGES
AND GROWS IT NEVER
COMES OUT LIKE IT
STARTS BECAUSE YOU
LEARN ALOT MORE AS
YOU GET INTO THE
SUBTLETIES OF IT AND
YOU ALSO FIND THERE
ARE TREMENDOUS
TRADEOFFS THAT YOU
HAVE TO MAKE AND ITS
THAT PROCESS THAT IS
THE MAGIC

500 washington

Laura Tinetti
+1 415 913 8500
laura.tinetti@jll.com
CA #01358500



Jones Lang LaSalle Brokerage, Inc.
License #01856260

Although information has been obtained from sources deemed reliable, JLL does not make any guarantees, warranties or representations, express or implied, as to the completeness or accuracy as to the information contained herein. Any projections, opinions, assumptions or estimates used are for example only. There may be differences between projected and actual results, and those differences may be material. JLL does not accept any liability for any loss or damage suffered by any party resulting from reliance on this information. If the recipient of this information has signed a confidentiality agreement with JLL regarding this matter, this information is subject to the terms of that agreement. ©2025 Jones Lang LaSalle Brokerage, Inc. All rights reserved.