



[View Virtual Tour](#)

# Bergamot Station sublease

2415-2425 Michigan Avenue, Santa Monica

47,533 SF (can be demised to 18,040 SF)

2415-2425 Michigan Avenue/Santa Monica

# 2415-2425 Michigan Avenue



## Size

18,040 - 47,553 SF



## Availability

Immediately



## Term

5/31/2029



## Rate

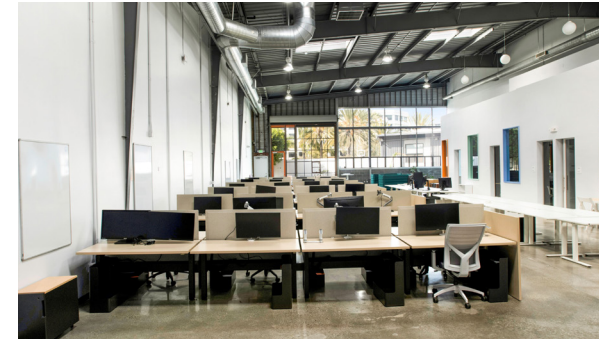
Negotiable

### Space features

- Create the workplace magnet to attract talent
- Plug and play creative office, FF&E available
- 30' ceiling heights + abundant natural light throughout
- Building signage available
- Incredible all-hands space
- Indoor/outdoor space for activation + events
- Chef's kitchen and breakroom with built-in seating
- High volume space
- Highly amenitized space with mediation pods, phone booths, meeting rooms, shower
- Various parking solutions in immediate area
- 1-minute walk to Expo Station (26th & Olympic)
- 1-minute walk to amenities like Birdie G's and The Great Outdoors restaurant





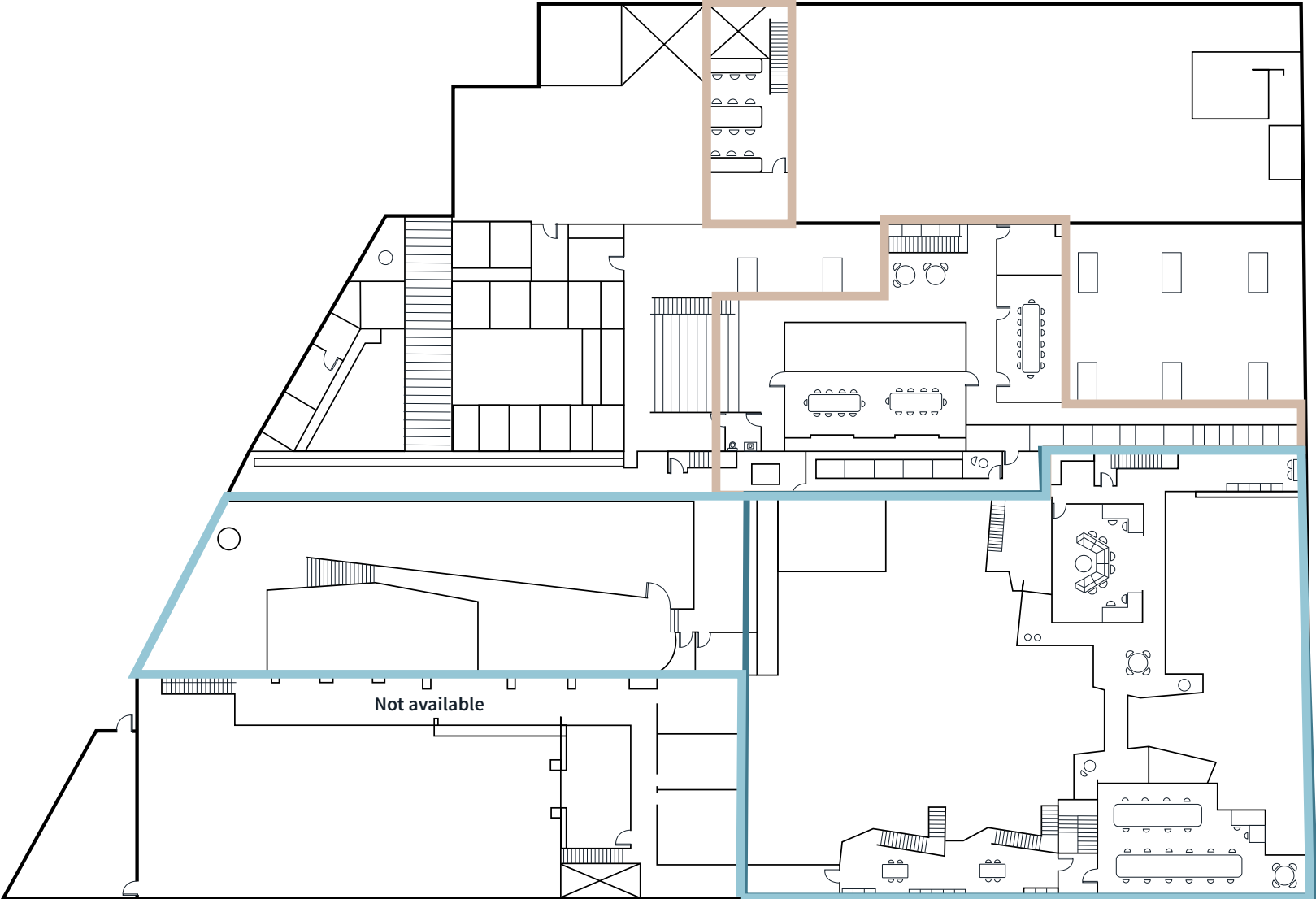


# Floor one

- 2425 Michigan - 18,800 SF
- 2415 Michigan - 18,040 SF
- 2415 Michigan - 28,724 SF
- Total Campus - 47,533 SF



# Floor two





### Amenities

- 1. Blueys Santa Monica
- 2. Cafe Ruisseau
- 3. Tiato Kitchen + Garden
- 4. Bergamot Station Arts Center
- 5. Birdie G's
- 6. 26th St/Bergamot Expo Station
- 7. 30 Bay Club Santa Monica
- 8. 90 Water Garden
- 9. Santa Monica Brew Works
- 10. Whole Foods Market



**JLL**

**Owen Fileti**

LIC. 01410364

+1 310 367 2584

[owen.fileti@jll.com](mailto:owen.fileti@jll.com)

Although information has been obtained from sources deemed reliable, JLL does not make any guarantees, warranties or representations, express or implied, as to the completeness or accuracy as to the information contained herein. Any projections, opinions, assumptions or estimates used are for example only. There may be differences between projected and actual results, and those differences may be material. JLL does not accept any liability for any loss or damage suffered by any party resulting from reliance on this information. If the recipient of this information has signed a confidentiality agreement with JLL regarding this matter, this information is subject to the terms of that agreement. ©2024 Jones Lang LaSalle Brokerage, Inc. All rights reserved.