

# For lease

6608 East Adamo Drive  
Tampa, FL 33619

43,921 SF freestanding building on  $\pm 3.34$  AC  
 $\pm 0.75$  AC of IOS



# 6608 East Adamo Drive Tampa, FL 33619

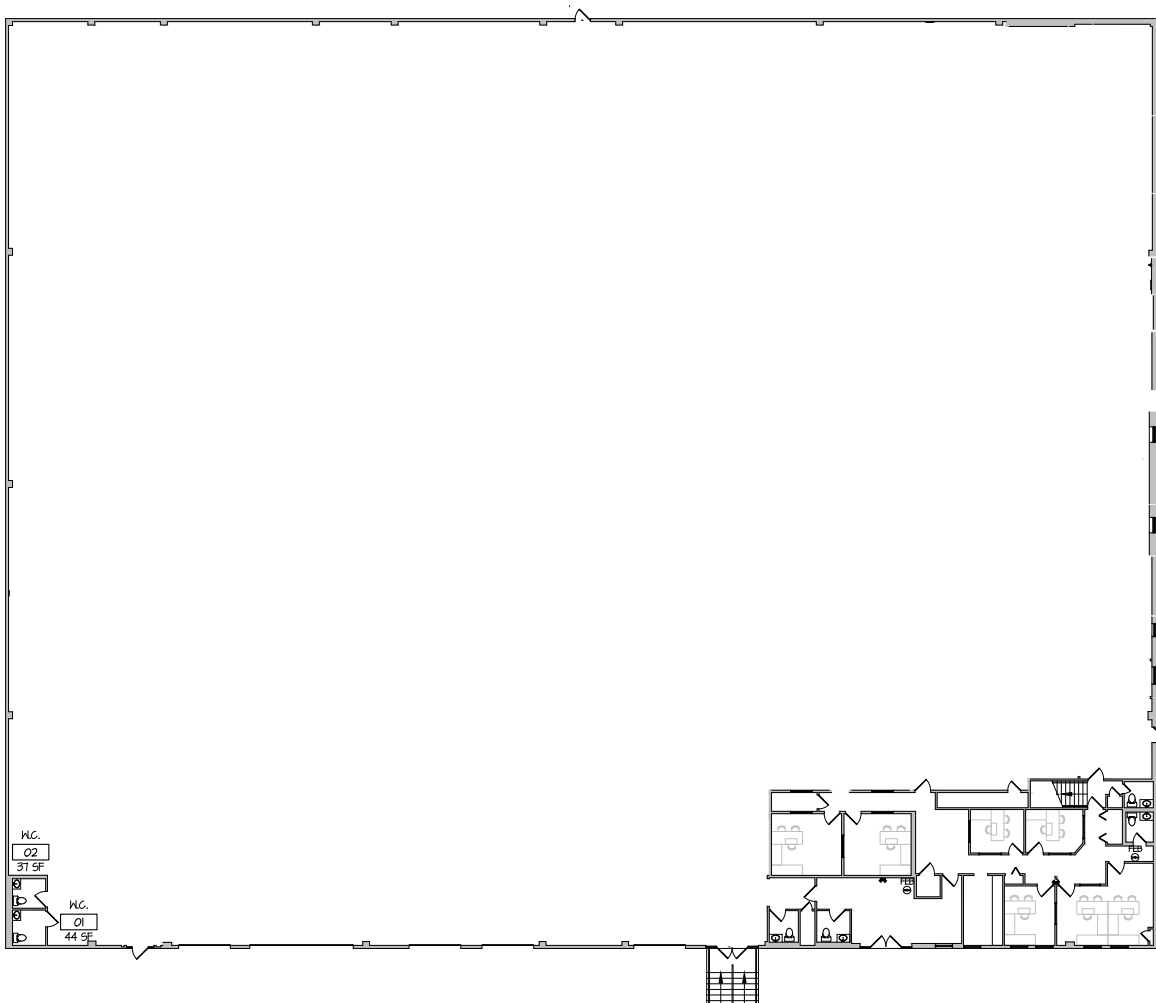
## Property overview

- 43,921 SF freestanding building on 3.34 acres
- Direct frontage on Adamo Drive
- Excellent access to I-4 and I-75
- ±0.75 AC of outdoor storage
- Availability immediately

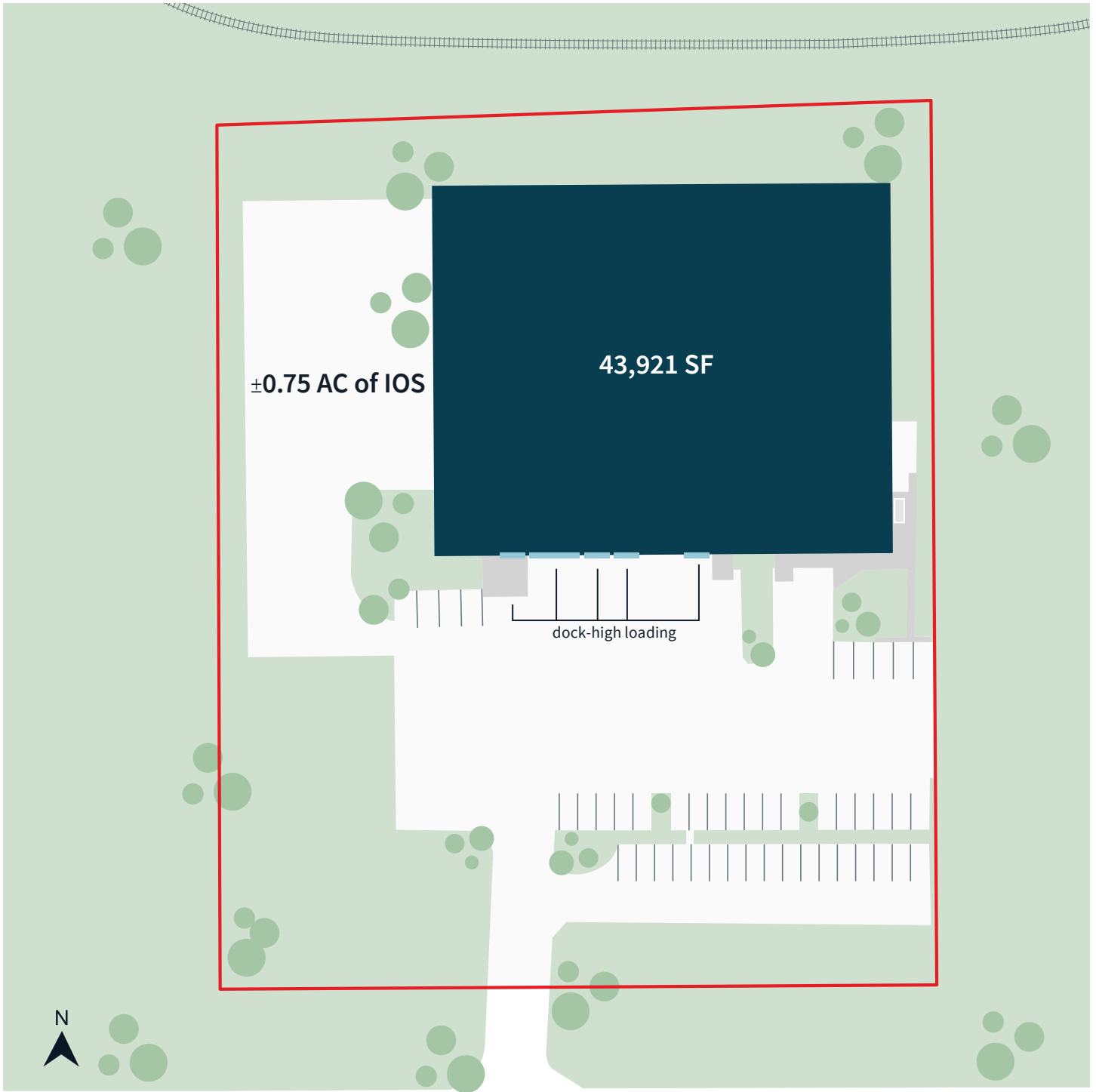


# Availability highlights

<b>Building size</b>	43,921 SF	<b>Loading</b>	Five (5) dock-high doors (one oversized)
<b>Lot size</b>	3.34 AC	<b>Clear height</b>	24'
<b>Warehouse size</b>	±41,421 SF	<b>Year built</b>	1967
<b>Office size</b>	±2,500 SF	<b>Zoning</b>	IH (Heavy Industrial)
<b>Outside storage</b>	±0.75 AC	<b>Auto parking</b>	44



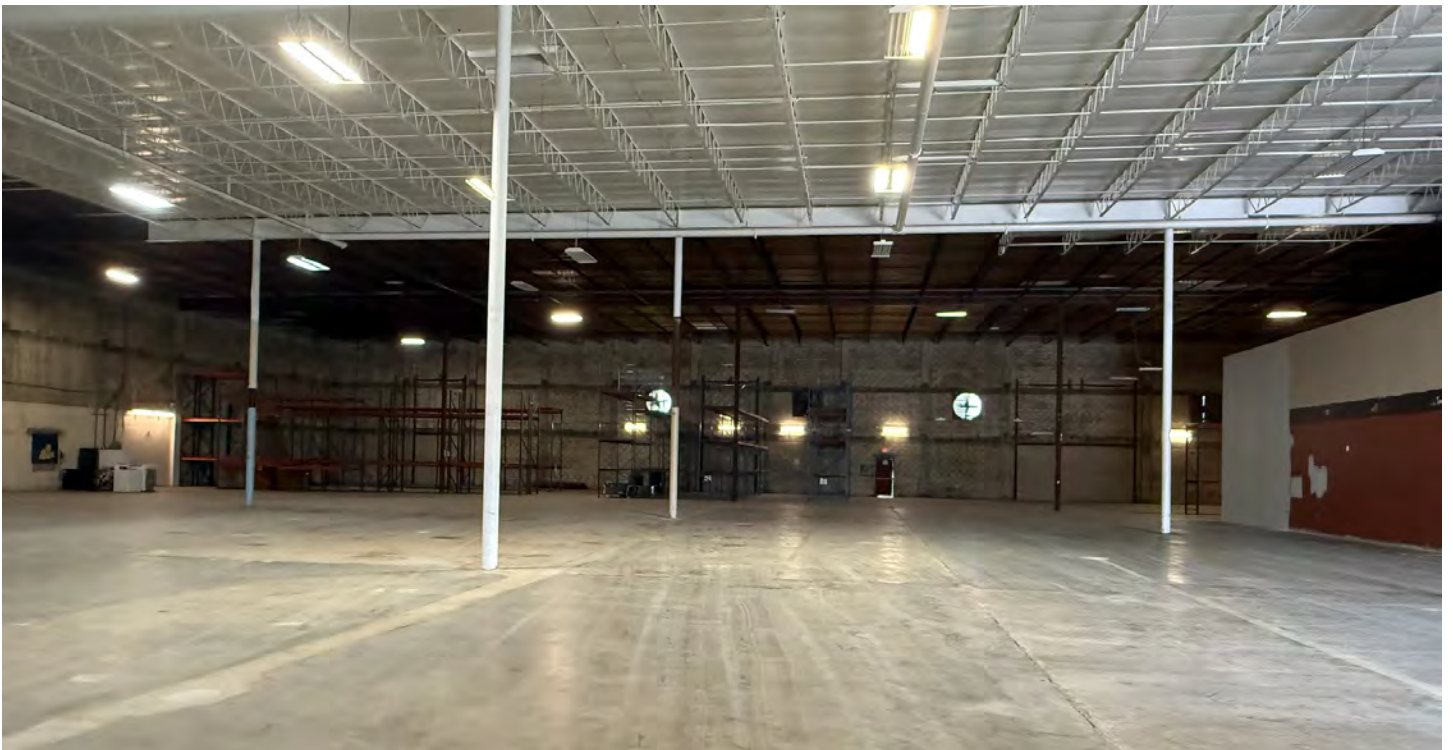
# Site plan



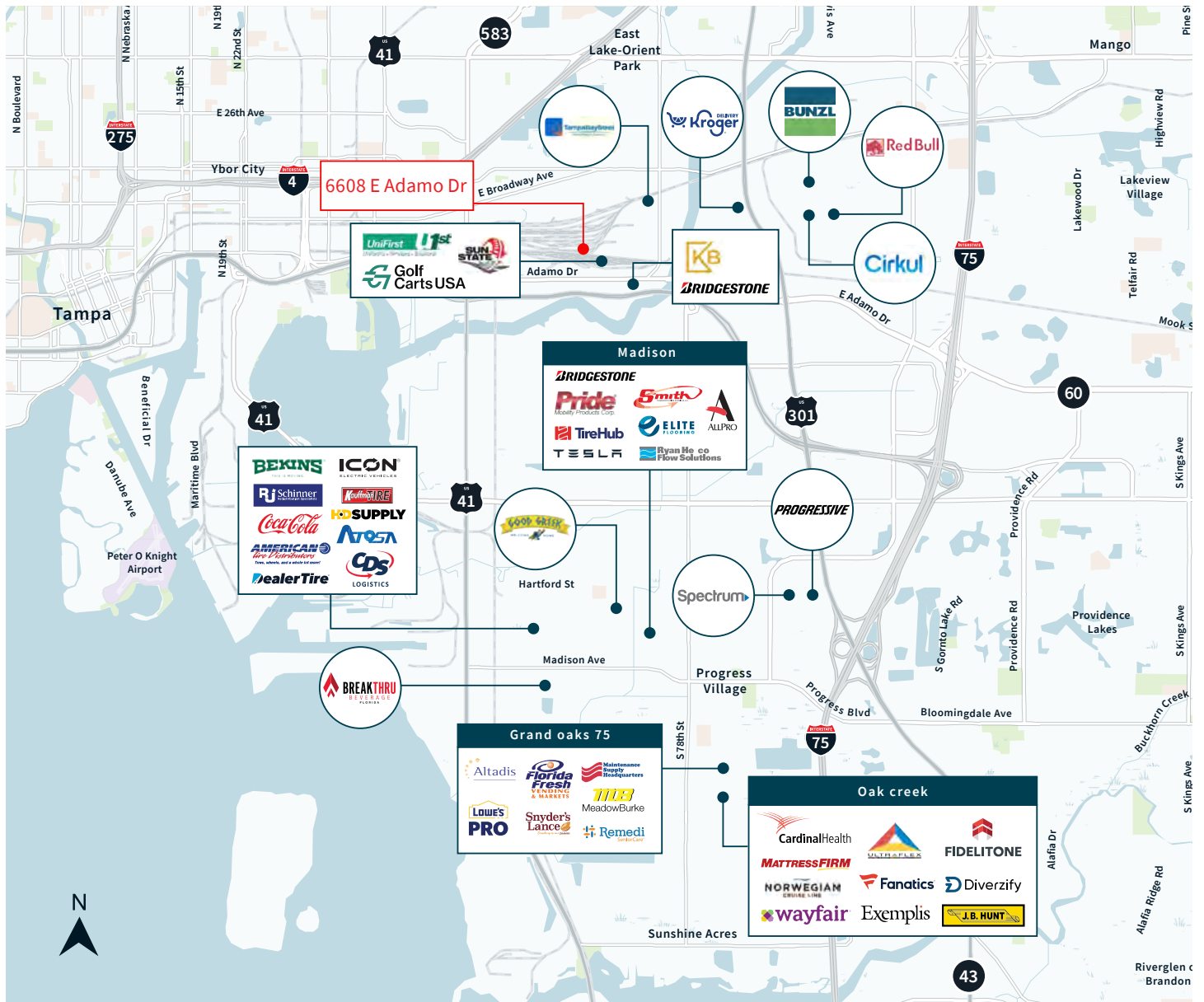
# Exterior photos



# Interior photos



# Location overview



4.9 miles to Port of Tampa  
 12.3 miles to Tampa Airport (TPA)  
 22.5 miles to St. Pete Airport (PIE)

2.3 miles to I-4  
 3.2 miles to I-75  
 5.3 miles to I-275

**Downtown Tampa**



**Contact**

**Peter Cecora**  
*Exec. Managing Director*  
peter.cecora@jll.com  
+1 813 387 1297

**Olivia Brock**  
*Vice President*  
olivia.brock@jll.com  
+1 813 387 1320