 **JLL** SEE A BRIGHTER WAY

For Sublease

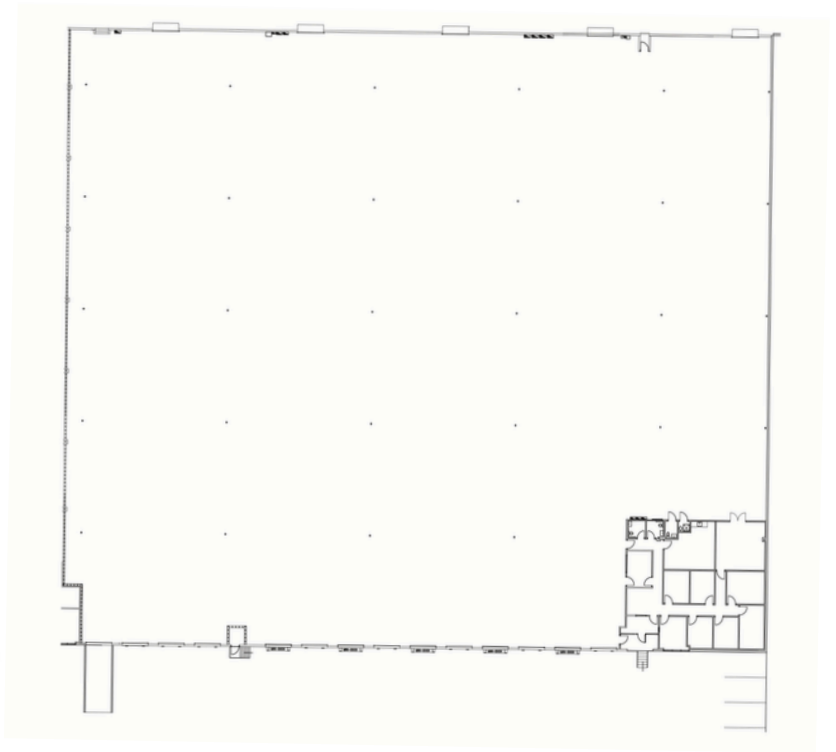
917 Parkway Drive,
Grand Prairie, TX 75051
60,000 SF Available

Property Description:

- Available Space: 60,000 SF
- Office Space: 2,587 SF
- Outdoor Paved Area: 0.82 AC
- Ceiling Height: 24'
- Dock Doors: 13 Dock, 1 Ramp
- Sprinkler: 100% Sprinklered
- Lease Expiration: 05/31/2027

Property Highlights:

- Fenced truck court
- Prime location, just minutes from SH-360, I-30, I-20, and the DFW International Airport



Caleb McCoy, SIOR
Managing Director
214 949-2084
Caleb.McCoy@jll.com

Paul Davis
Senior Associate
214 808-1519
Paul.Davis@jll.com

Although information has been obtained from sources deemed reliable, neither Owner nor JLL makes any guarantees, warranties or representations, express or implied, as to the completeness or accuracy as to the information contained herein. Any projections, opinions, assumptions or estimates used are for example only. There may be differences between projected and actual results, and those differences may be material. The Property may be withdrawn without notice. Neither Owner nor JLL accepts any liability for any loss or damage suffered by any party resulting from reliance on this information. If the recipient of this information has signed a confidentiality agreement regarding this matter, this information is subject to the terms of that agreement. ©2023 Jones Lang LaSalle IP, Inc. All rights reserved.