



 **JLL** SEE A BRIGHTER WAY

16180 SE Laurel Street
Waukee, Iowa 50263

For lease

Flex space available in
prime Waukee location

12,108 SF

Property overview

Availability: 12,108 SF
Lease rate: \$12.00 NNN
Lot size: 1.27 acres
Zoning: Commercial
Year built: 1999

- Drive-in doors: 5
 - Four 12'W x 12'T
 - One 12'W x 14'T
- Dock doors: 1
- Clear height: 14' - 16'
- Power: 3-phase, 120/240V
- Existing office and showroom (~4,500 SF)
- Existing floor drain
- Fenced and paved outdoor storage
- Excellent location in Waukee with easy access to Hickman Rd and University Ave

Contact brokers for
additional information

Tanner Hedstrom
Vice President
tanner.hedstrom@jll.com
+1 515 745 2734

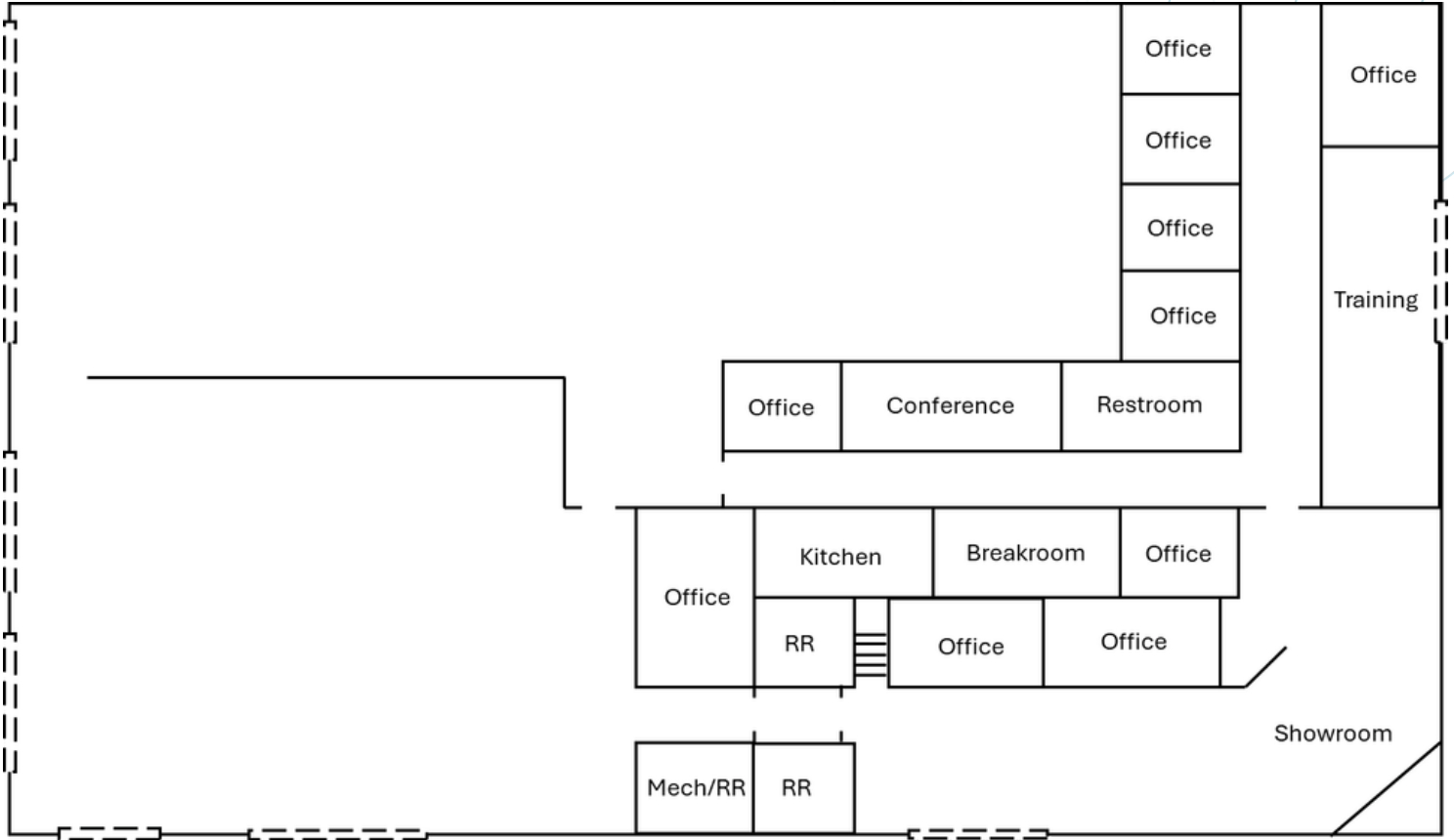
Thomas Edwards
Associate
thomas.edwards@jll.com
+1 515 802 4684

Austin Hedstrom, SIOR
Executive Vice President
austin.hedstrom@jll.com
+1 515 414 1767

jll.com/des-moines

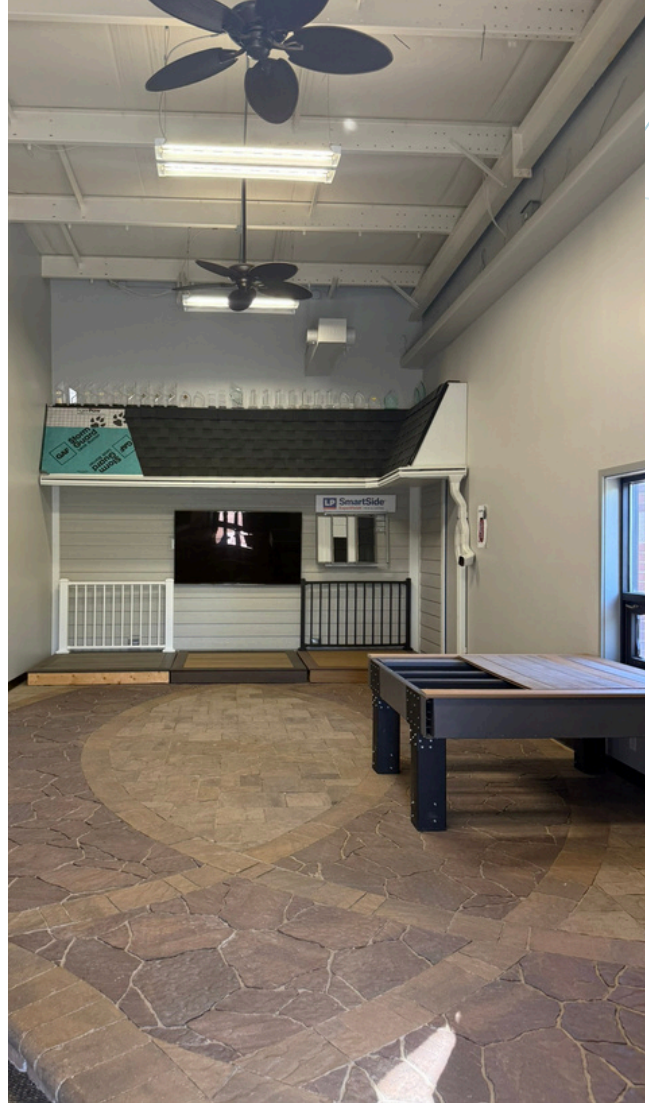


Floorplan





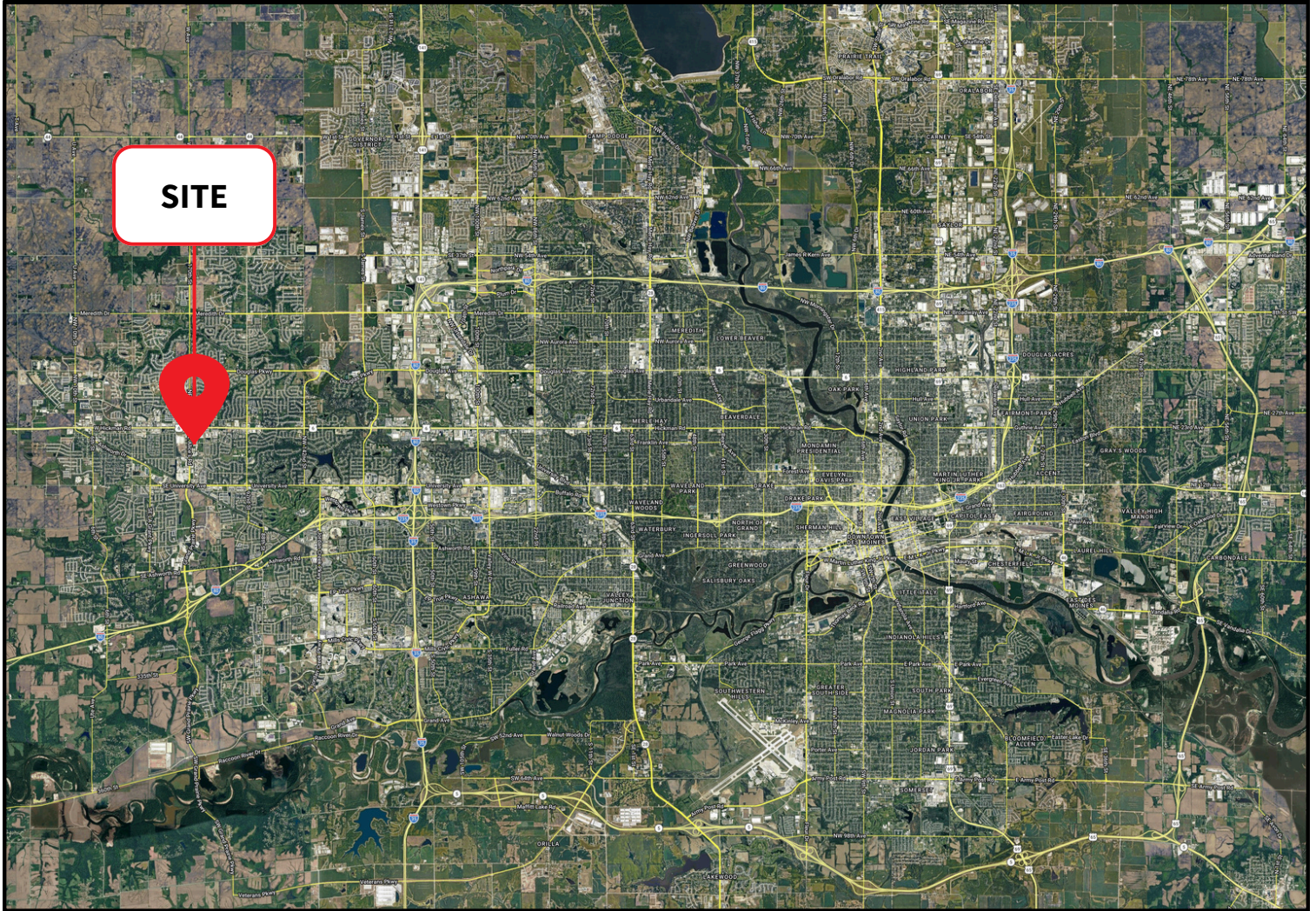
Images





For lease

16180 SE Laurel Street | Waukee, Iowa 50263



Contact brokers for
additional information
jll.com/des-moines

Tanner Hedstrom
Vice President
tanner.hedstrom@jll.com
+1 515 745 2734

Thomas Edwards
Associate
thomas.edwards@jll.com
+1 515 802 4684

Austin Hedstrom, SIOR
Executive Vice President
austin.hedstrom@jll.com
+1 515 414 1767