



16190 SE Laurel Street
Waukee, Iowa 50263

For lease

Flex space available in
prime Waukee location

19,320 SF

Property overview

Availability: 19,320 SF

Lease rate: \$10.00 NNN

Lot size: 1.27 acres

Zoning: M-1

- Drive-in doors: 4
- Dock doors: 6
- Clear height: 13' - 17'
- Existing office space
- Potential for 0.50 acres of outdoor storage
- Excellent location in Waukee with easy access to Hickman Rd and University Ave

Contact brokers for
additional information

jll.com/des-moines

Tanner Hedstrom

Vice President

tanner.hedstrom@jll.com

+1 515 745 2734

Thomas Edwards

Associate

thomas.edwards@jll.com

+1 515 802 4684

Austin Hedstrom, SIOR

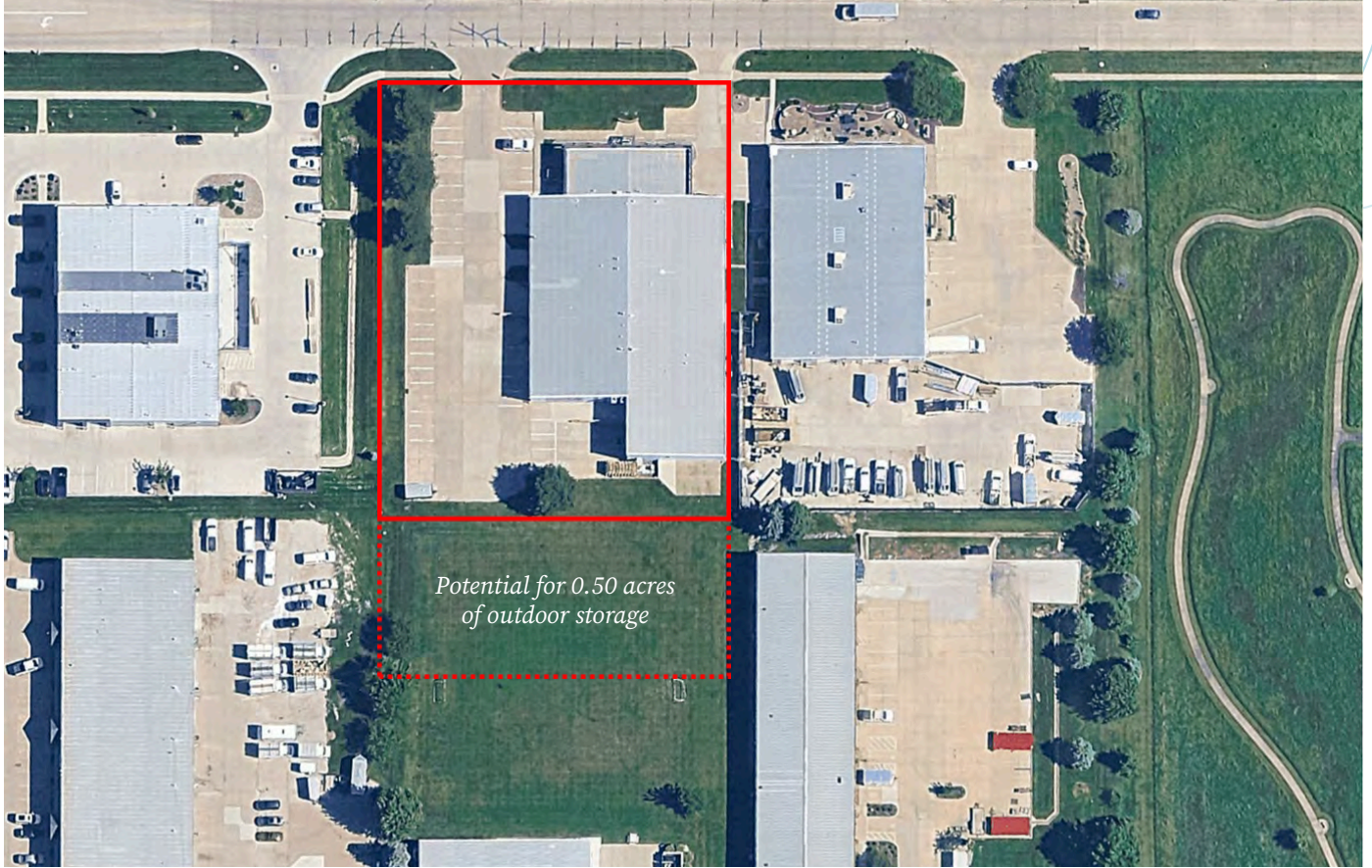
Executive Vice President

austin.hedstrom@jll.com

+1 515 414 1767



Site plan





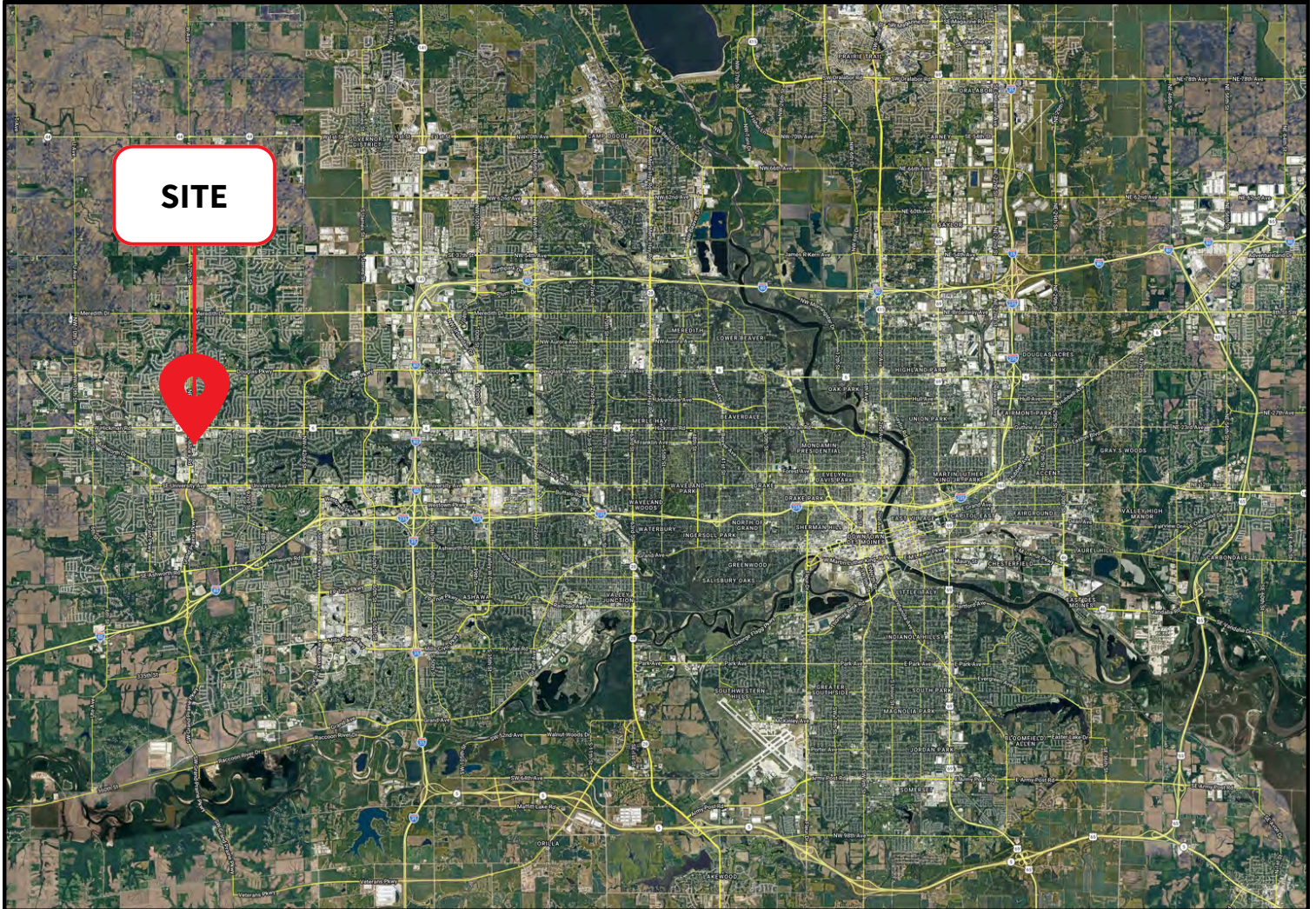
Images





For lease

16190 SE Laurel Street | Waukee, Iowa 50263



Contact brokers for
additional information
jll.com/des-moines

Tanner Hedstrom
Vice President
tanner.hedstrom@jll.com
+1 515 745 2734

Thomas Edwards
Associate
thomas.edwards@jll.com
+1 515 802 4684

Austin Hedstrom, SIOR
Executive Vice President
austin.hedstrom@jll.com
+1 515 414 1767