

# For lease

13730 South Point Boulevard,  
Charlotte, NC 28273

## Property features

- 20,000 SF freestanding building with signage opportunity
- Serene park setting within the South Point Business Park
- Walking trails and picnic areas throughout the park
- 10/1,000 Parking Ratio
- 2 miles from I-77, and 3 miles from I-85
- Within a short drive of Ayrley Town Center and RiverGate Shopping Center



### Building features

Building size	± 20,000 RSF
Available	± 20,000 RSF
Parking	10/1,000
Year built	2000

#### Meredith Ball

Managing Director

meredith.ball@jll.com

+1 704 519 5843

#### Claiborne Mulhern

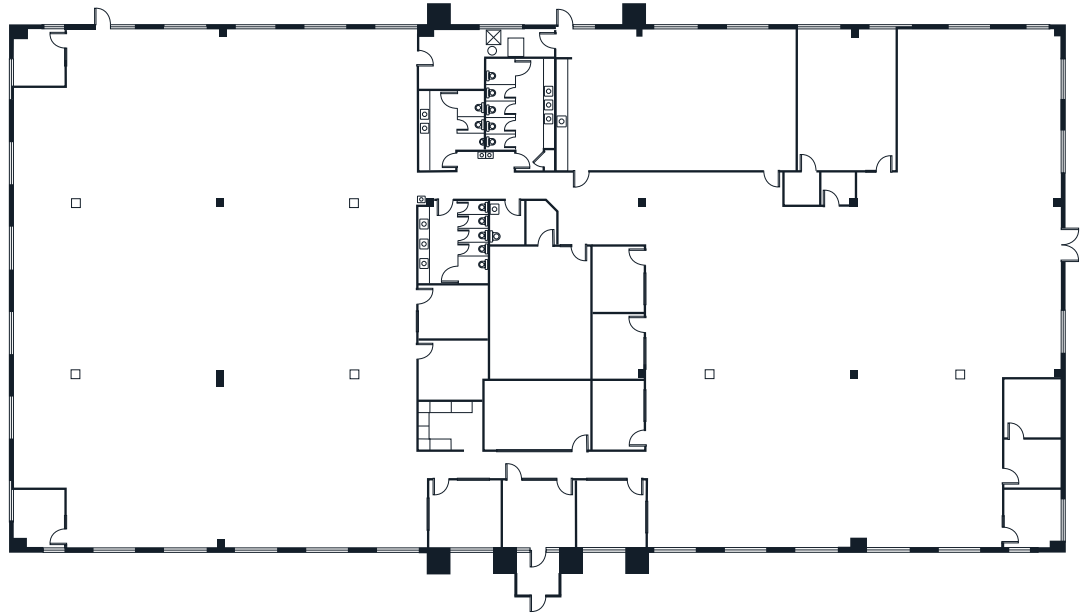
Senior Vice President

claiborne.mulhern@jll.com

+1 434 249 7465

## Floor plan

1st Floor  
± 20,000 RSF available



## Location



**Meredith Ball**  
Managing Director  
meredith.ball@jll.com  
+1 704 519 5843

**Claiborne Mulhern**  
Senior Vice President  
claiborne.mulhern@jll.com  
+1 434 249 7465