

For lease

600 Meadowlands Parkway
Secaucus, NJ

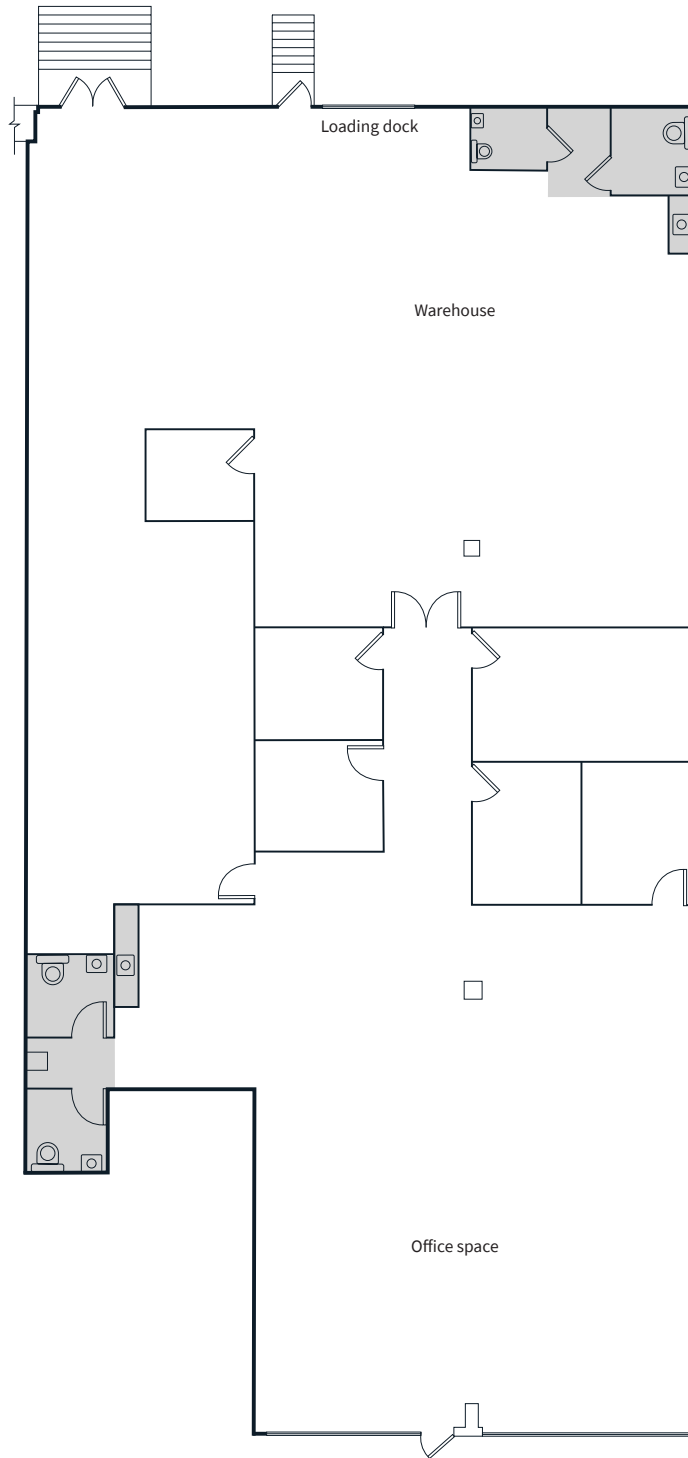


Building specifications

- Available SF: 6,654 SF
- Office space: 3,230 SF
- Loading docks: 1 (expandable)
- Clear height: 23'
- Column spacing: 40'x40'
- Available: October 1, 2026



Harold Imperatore
Executive Vice President
harold.imperatore@jll.com
+1 908 938 0865



Harold Imperatore
Executive Vice President
harold.imperatore@jll.com
+1 908 938 0865