



For lease

Premier office space
available in Urbandale

**3809 109th Street
Urbandale, IA 50322**

Property overview

Availability:

- 1st floor:
 - 184 RSF
 - 2,073 RSF
 - 2,572 (Sublease through 12/31/26)
- 2nd floor: 2,855 RSF

Lease rate: \$13.50 Modified Gross

- Quick access to Interstate 80/35
- Located off Douglas Avenue
- Onsite parking available
- Located near multiple single-family and multi-family housing developments, retail, office, commercial, and hospitality.

Contact broker for
additional information

jll.com/des-moines

Jones Lang LaSalle Brokerage, Inc.

Lucas Hedstrom

Vice President

+1 515 564 9269

lucas.hedstrom@jll.com

Justin Lossner, CCIM, SIOR

Senior Managing Director

+1 515 499 8679

justin.lossner@jll.com

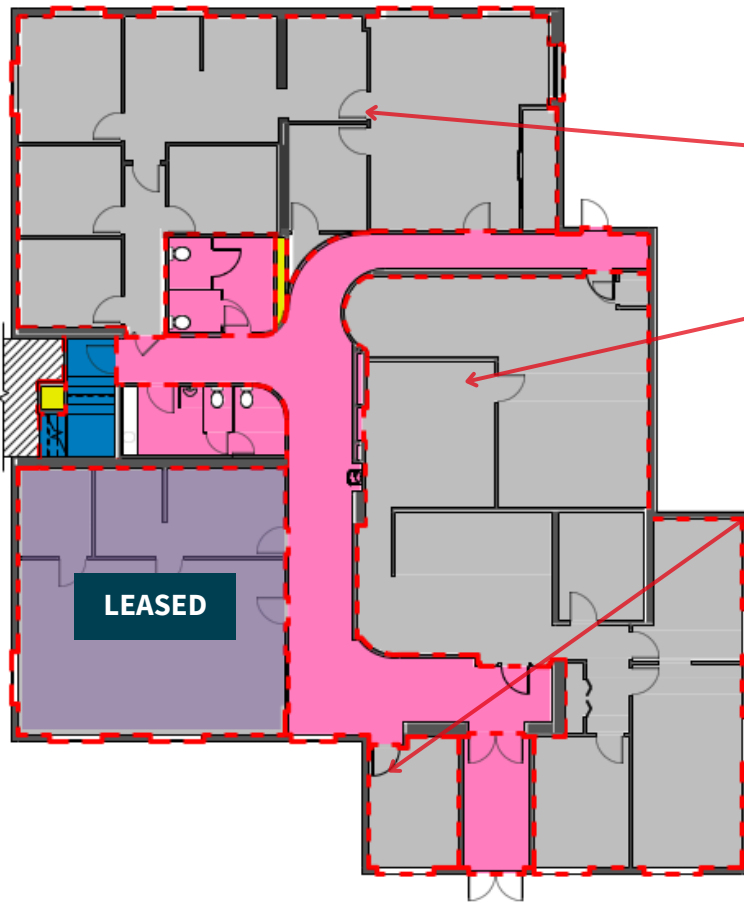
Thomas Edwards

Associate

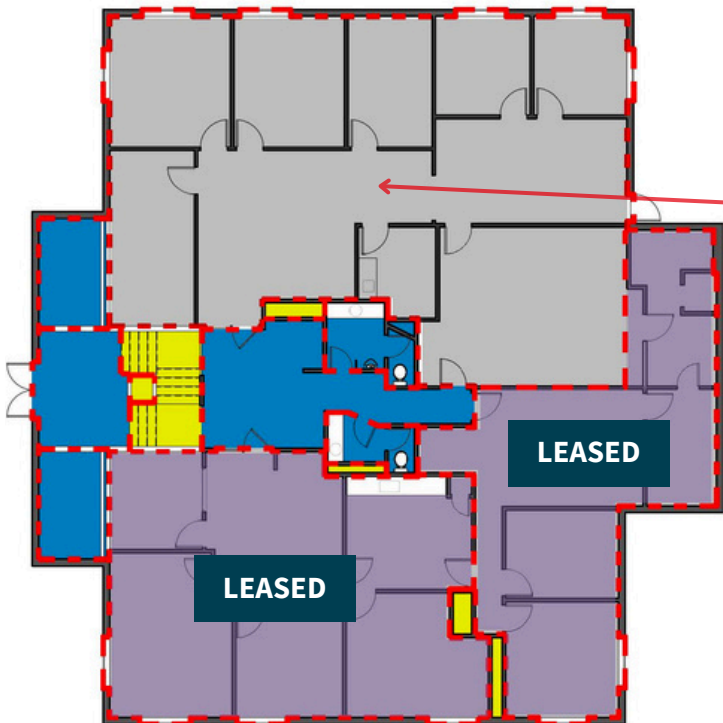
+1 515 802 4684

thomas.edwards@jll.com

Floor plan

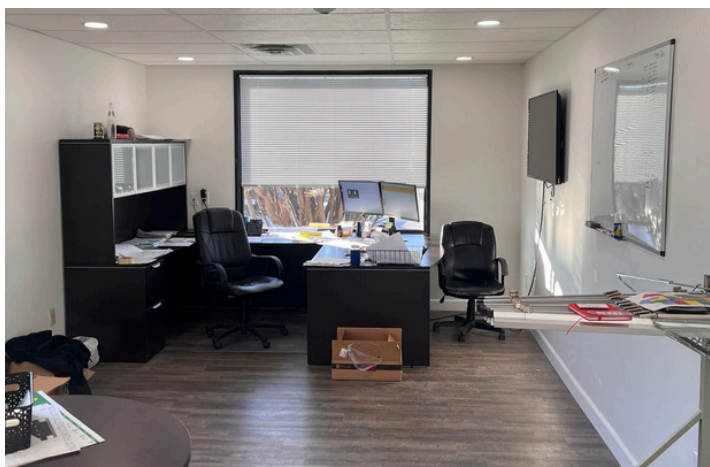


First Floor
2,073 RSF
2,572 RSF <i>Sublease (12/31/26)</i>
184 RSF



Second Floor
2,855 RSF

Images



For lease

3809 109th Street | Urbandale, IA 50322



Lucas Hedstrom

lucas.hedstrom@jll.com

+1 515 564 9269

Justin Lossner, CCIM, SIOR

justin.lossner@jll.com

+1 515 371 0846

Thomas Edwards

thomas.edwards@jll.com

+1 515 802 4684

jll.com/des-moines

Jones Lang LaSalle Americas, Inc.

