



Deloitte.

**REDUCED
ASKING
RATE**

**\$3.00
PSF/YEAR**
CO-OP COMMISSION

**TOUR
INCENTIVE**

\$100
VISA GIFT CARD

39th FLOOR - FOR SUBLEASE

22 Adelaide Street West

5,500 SQ. FT - TURNKEY OPPORTUNITY





Suite Specifications

Suite 3930: **5,500*** sq. ft.

Availability Date: **Immediate**

Sublease Expiry: **March 30th, 2033**
Flexible Term Lengths Available

Additional Rent: **\$28.62 PSF** (Est. 2026)

Net Rent: **Contact Listing Agents**

* Approximate Size - Space to be Measured

39th FLOOR - FOR SUBLEASE

22 Adelaide Street West

5,500 SQ. FT - TURNKEY OPPORTUNITY



Open Work Area



Private Meeting Rooms



Phone Rooms



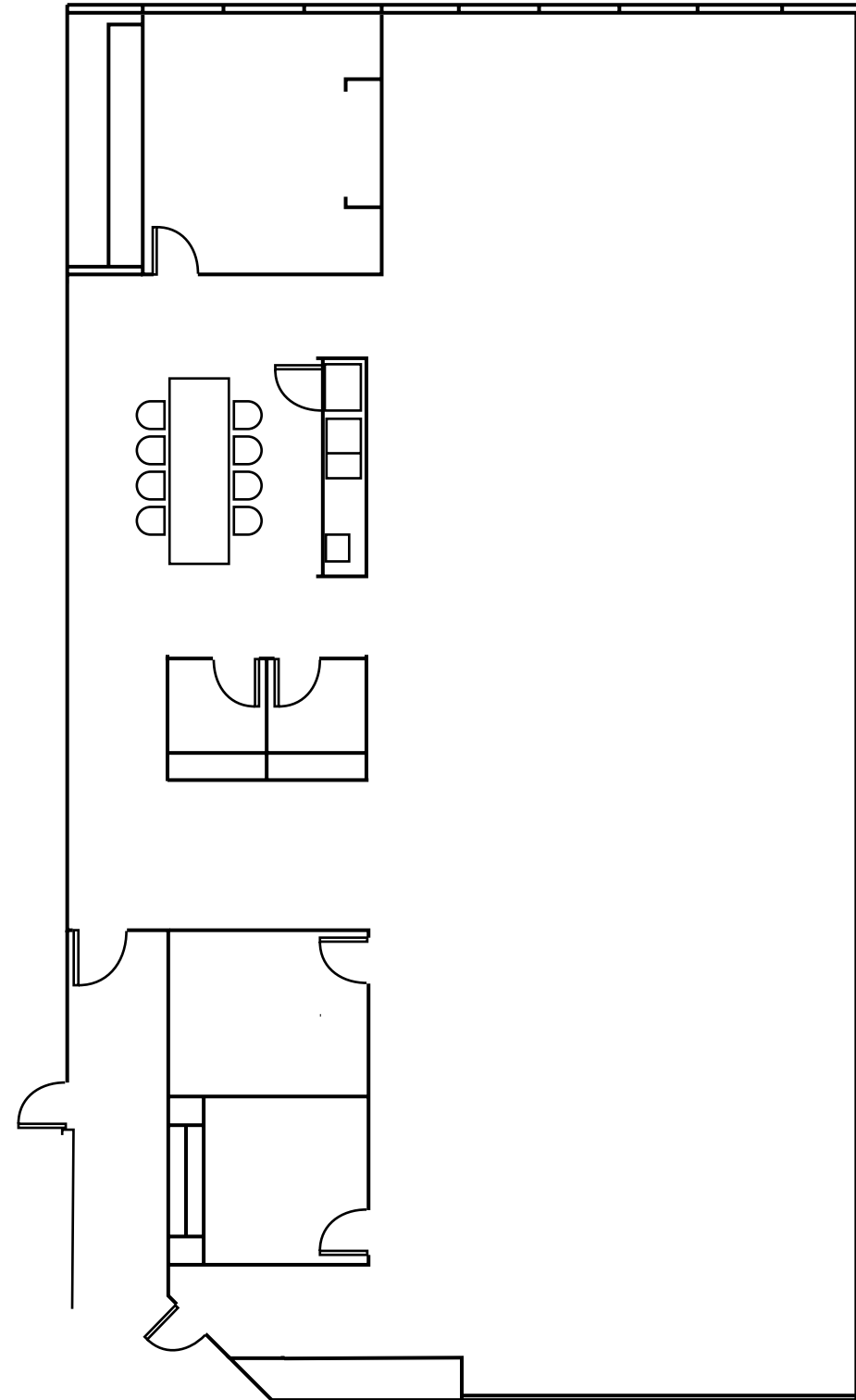
Kitchen



Boardroom



Copy Area



*NOT TO SCALE







LEED Platinum



Bicycle Parking



Shower Facilities



PATH Connected



BOMA 360



WalkScore™ 100



EV Parking Stations

Sean Cline*

Senior Vice President
+1 (647) 920-2113
Sean.Cline@jll.com

Brandon Marcello*

Associate
+1 (647) 919-9194
Brandon.Marcello@jll.com

Rob Sweeney*

Executive Vice President
+1 (416) 559-0722
Robert.Sweeney@jll.com

39th FLOOR - FOR SUBLEASE

22 Adelaide Street West

5,500 SQ. FT - TURNKEY OPPORTUNITY

jll.com

© 2024 Jones Lang LaSalle IP, Inc. All rights reserved. Information set out herein (the "Information") has not been verified by Jones Lang LaSalle Real Estate Services, Inc., Brokerage and any and all of its real estate agents/staff, and to all other divisions of the company (collectively "JLL"). JLL does not represent, warrant or guarantee the accuracy, correctness and completeness of the Information. Given the limitations of the investigations, inquiries and verification that JLL have undertaken, the reliability of this Information must be treated with a suitable degree of caution and neither JLL or any of their affiliates accept any liability or responsibility for the accuracy or completeness of the information contained herein and no reliance should be placed on the information contained in this document. JLL does not accept or assume any responsibility or liability, direct or consequential, for the Information or the recipient's reliance upon the Information. The recipient of the Information should take such steps as the recipient may deem necessary to verify the Information prior to placing any reliance upon the Information. The Information may change and any property described in the Information may be withdrawn from the market at any time without notice or obligation to the recipient from JLL.

