

For sublease

581 Territorial Drive, Bolingbrook, IL 60440
448,512 SF



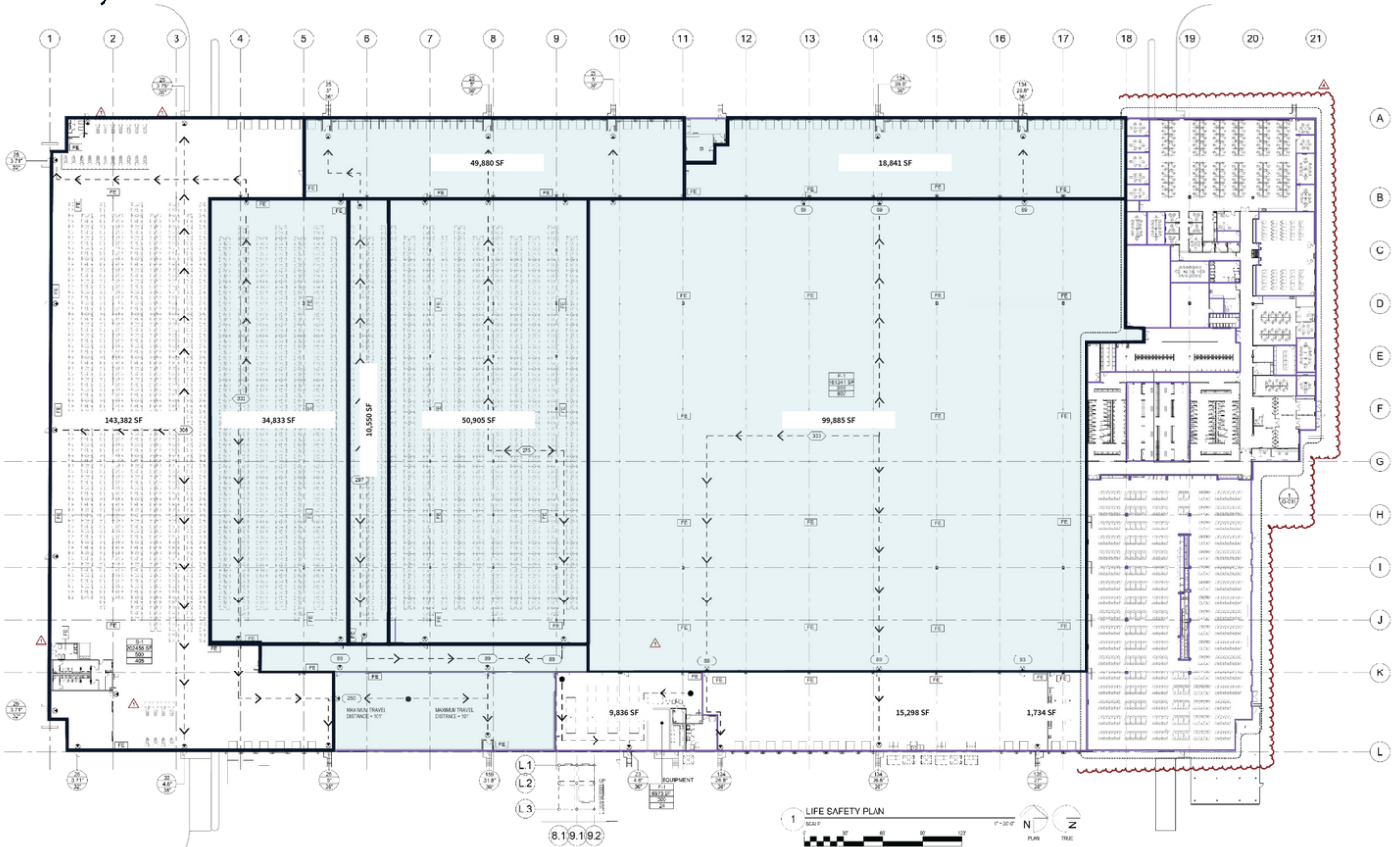
JLL

Charlie Kenning
Senior Managing Director
charlie.kenning@jll.com
+1 773 304 4117

Jackie Shropshire
Head of Chicago Industrial
jackie.shropshire@jll.com
+1 773 368 7108

For sublease

448,512 SF Available



Highlights

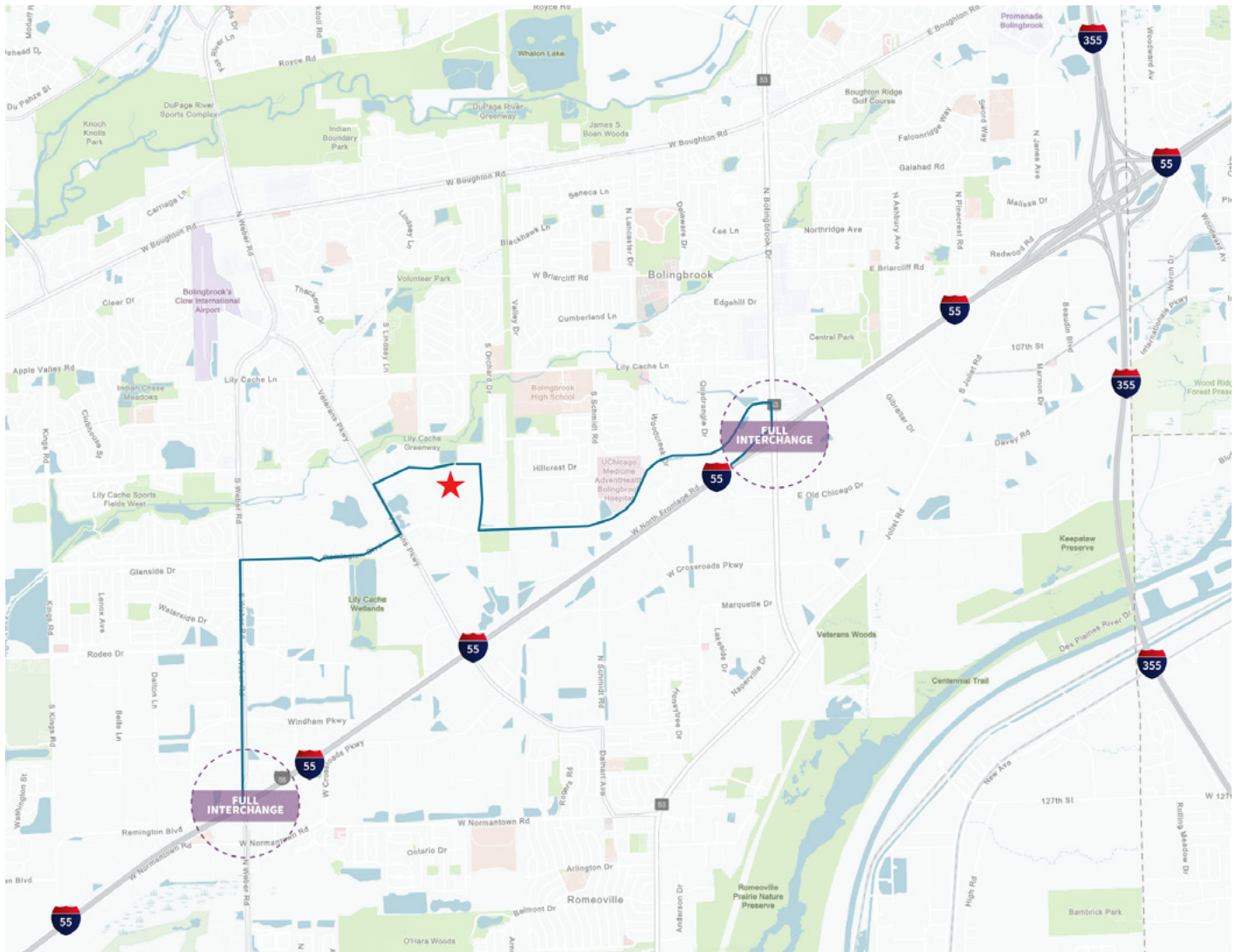
- Newly renovated state of the art food production facility with tri-temp capabilities
- 50,905 SF Freezer holding temperatures to 0° F
- Multiple Cooler rooms ranging in temperature from 36° F - 50° F
- Cold dock area for shipping and receiving
- Move in Ready with Racking and MHE available
- (1) 2500kVA ComEd utility transformer and (3) 2000kVA ComEd utility transformers

Total building	448,512 SF	Clear height	30'	Trailer parking	20
Available space	448,512 SF	Column spacing	48' x 40'	Sprinklers	ESFR
Divisible	200,000 SF	Loading docks	75	Power	(1) 2,500 kVA (3) 2,000 kVA
Office	25,000 SF	Auto parking	445	Term	Thru 6/1/2032

581 Territorial Drive Bolingbrook, IL 60440

Efficient access to metropolitan
Chicago, Wisconsin, and Indiana

**Easy access to I-55 via Weber
Road and Veterans Parkway
and close proximity to I-355**



Charlie Kenning
Senior Managing Director
charlie.kenning@jll.com
+1 773 304 4117

Jackie Shropshire
Head of Chicago Industrial
jackie.shropshire@jll.com
+1 773 368 7108