





For lease

2497 Coolidge Avenue, Orlando, FL 32804

± 2,048 SF Available

 **JLL** SEE A BRIGHTER WAY

OPPORTUNITY DETAILS

 ± 2,048 SF available


 One dock level door

 Fenced Lot

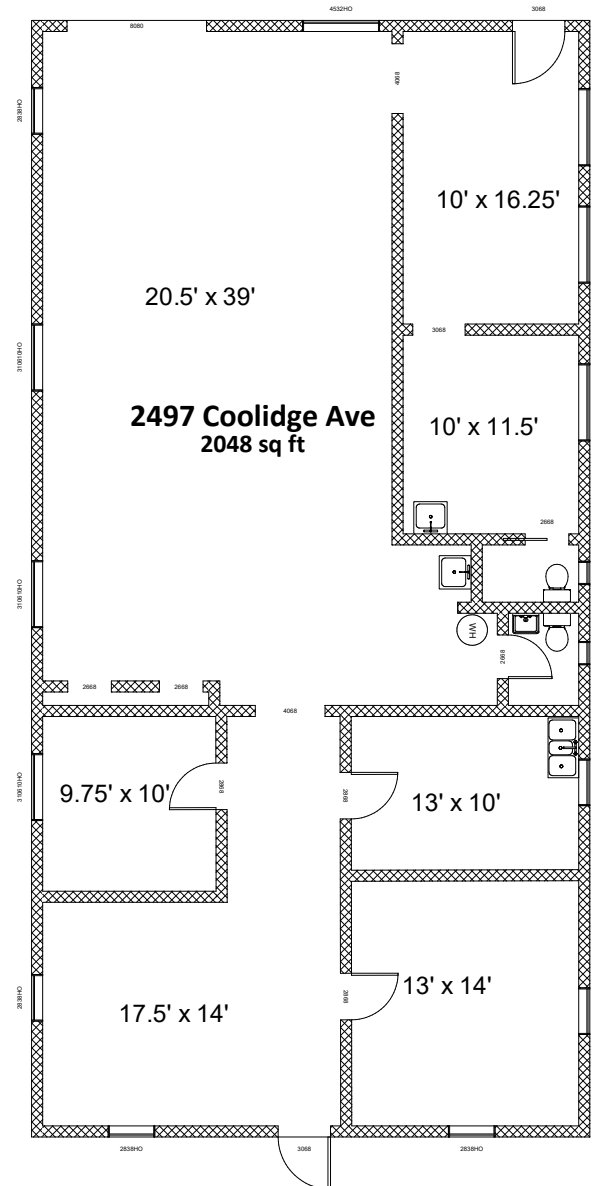
 Zoning - I-G/W, City of Orlando

 Building signage available

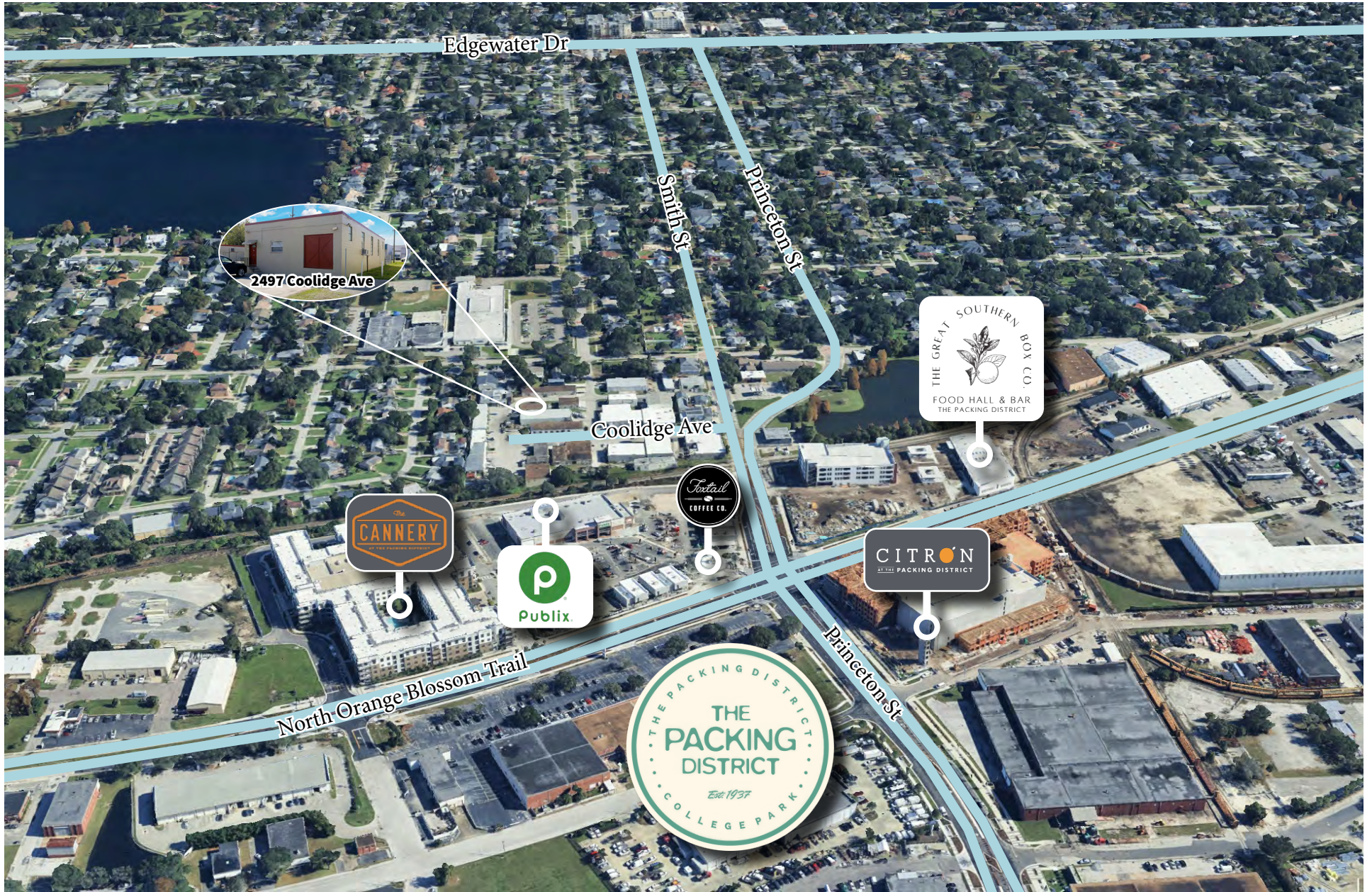
 \$15.00/SF (net of utilities)

 Approximate drivetimes:
College Park → 3 minutes
Downtown Orlando → 10 minutes
Maitland → 16 minutes
Winter Park → 18 minutes
International Airport → 30 minutes

FLOORPLANS



LOCATION





jll.com/orlando

Contact Information:

Nathan Eissler

Executive Vice President

nathan.eissler@jll.com

+1 407 982 8768

Brooks Robinson

Senior Associate

brooks.robinson@jll.com

+1 407 619 2249