

Godwin Plaza

644-658 Godwin Ave, Midland Park, NJ

Professionally
managed by 
Accordia.



875 SF - 2nd Generation Restaurant Space Available for Lease

David Townes
Managing Director
+1 917 993 5515
david.townes@jll.com

Alana Friedman
Vice President
+1 201 741 0990
alana.friedman@jll.com



Property Location

- » Godwin Plaza located on Godwin Avenue
- » Ample parking available
- » Highly trafficked Godwin Avenue connecting Wyckoff & Ridgewood
- » Strong visibility on Godwin Avenue

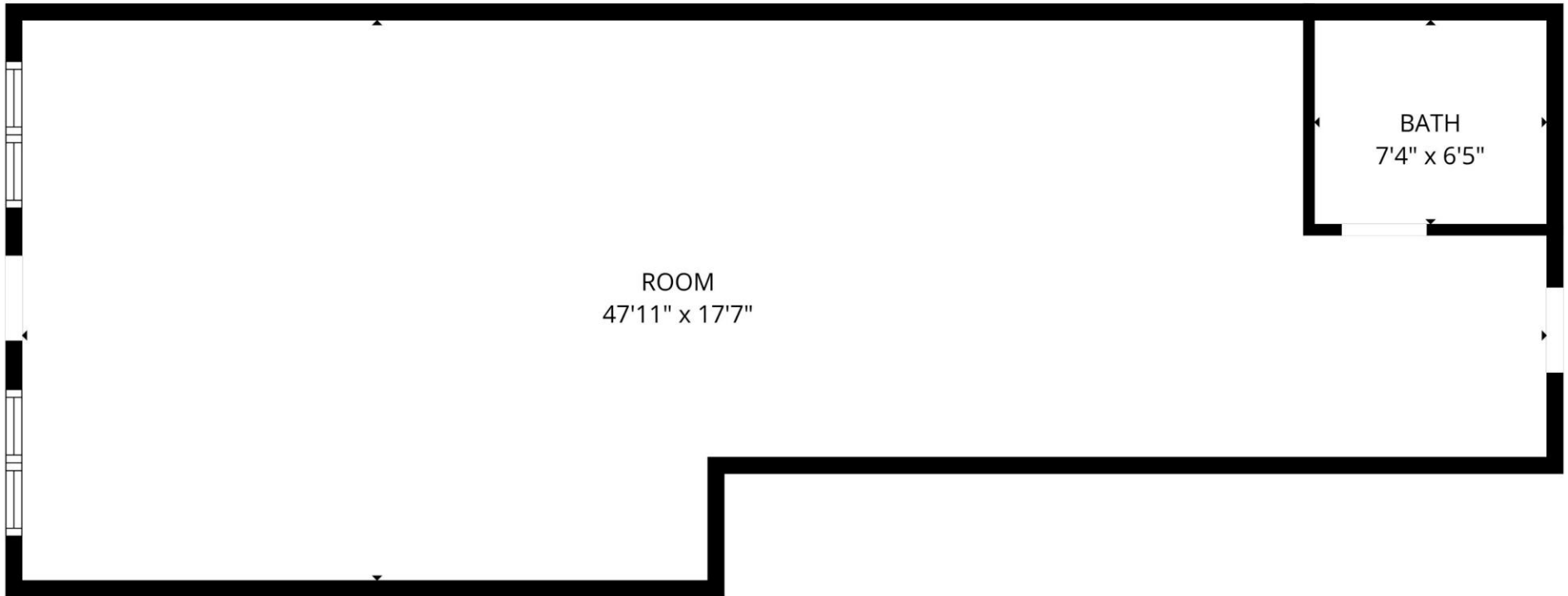
Space Availability

- » 875 SF – Former Café
- » Second Generation Restaurant Space
- » Asking Rent: Upon Request
- » NNN: \$12 PSF

Neighboring Tenants



| Floor Plan – 875 SF

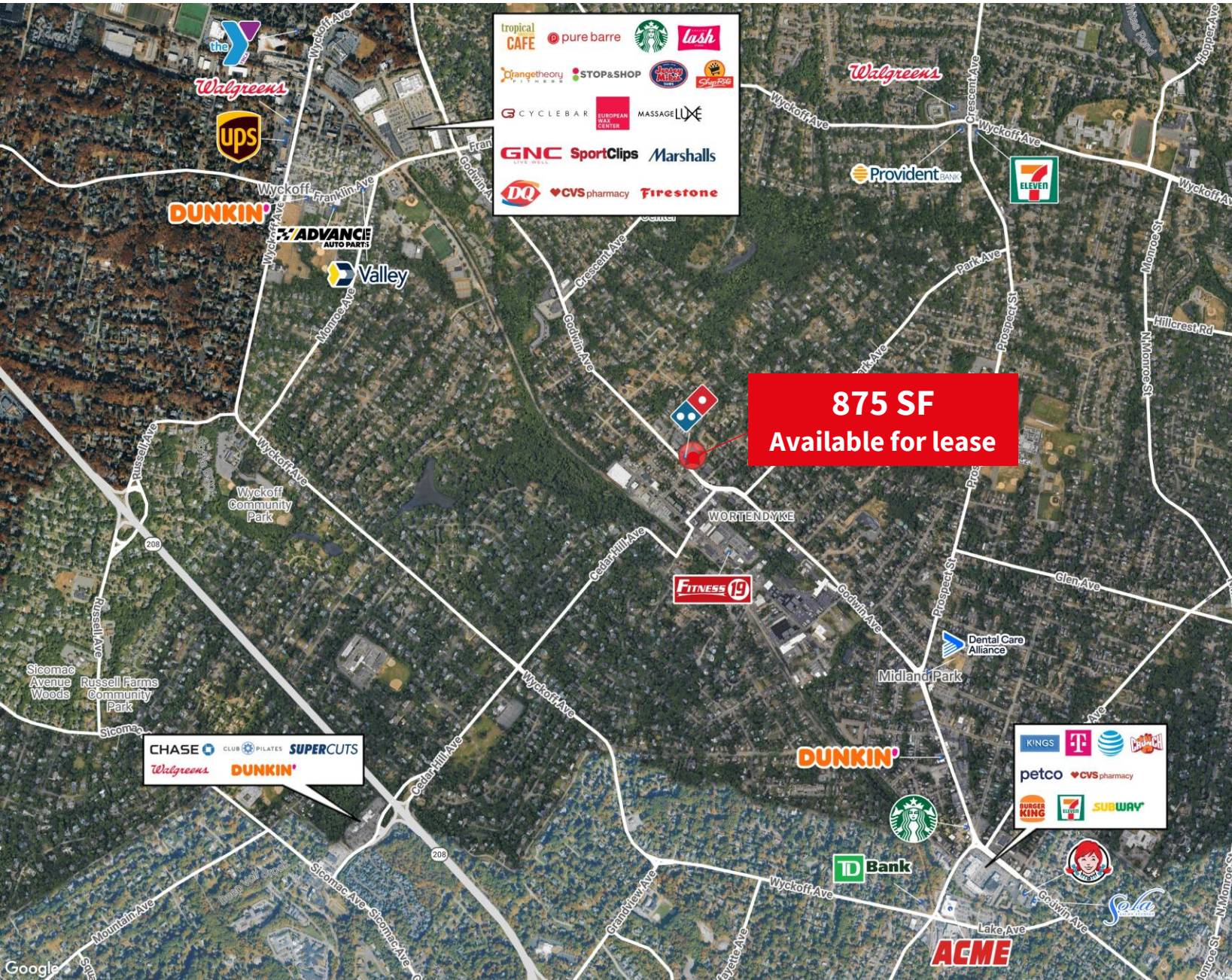


644-658 Godwin Ave, Midland Park, NJ



| Interior Photos – 875 SF





Demographics



92,759
Population



\$170,041
Med. HH Income



41,903
Employees



5,341
Businesses

Demographics taken within a 3-mile radius
Source: Costar 2025

David Townes
Managing Director
M +1 917 993 5515
david.townes@jll.com

Alana Friedman
Vice President
M +1 201 741 0990
alana.friedman@jll.com

Although information has been obtained from sources deemed reliable, JLL does not make any guarantees, warranties or representations, express or implied, as to the completeness or accuracy as to the information contained herein. Any projections, opinions, assumptions or estimates used are for example only. There may be differences between projected and actual results, and those differences may be material. JLL does not accept any liability for any loss or damage suffered by any party resulting from reliance on this information. If the recipient of this information has signed a confidentiality agreement with JLL regarding this matter, this information is subject to the terms of that agreement. ©2024. Jones Lang LaSalle IP, Inc. All rights reserved.