

Valley Logistics Center

15895 Valley Blvd., Fontana, CA 92335



152,280 SF
For Lease



QuadReal

Site Details

Building Area:

- 152,280 SF Available
- Part of a larger 376,910 SF building

Dock High Doors:

- 24 Dock high doors
- 8 Edge of dock levelers
- 8 Mechanical pit levelers

Ground Level:

- 1 Ground level loading door

Office:

- 5,256 SF Main office (SE corner)
- 1,500 SF Shipping and receiving office (SW corner)

Clear Height:

- 36' Minimum clear height

Column Spacing:

- 56'x 60'

Truck Court:

- Up to 47 trailer stalls

Additional Features:

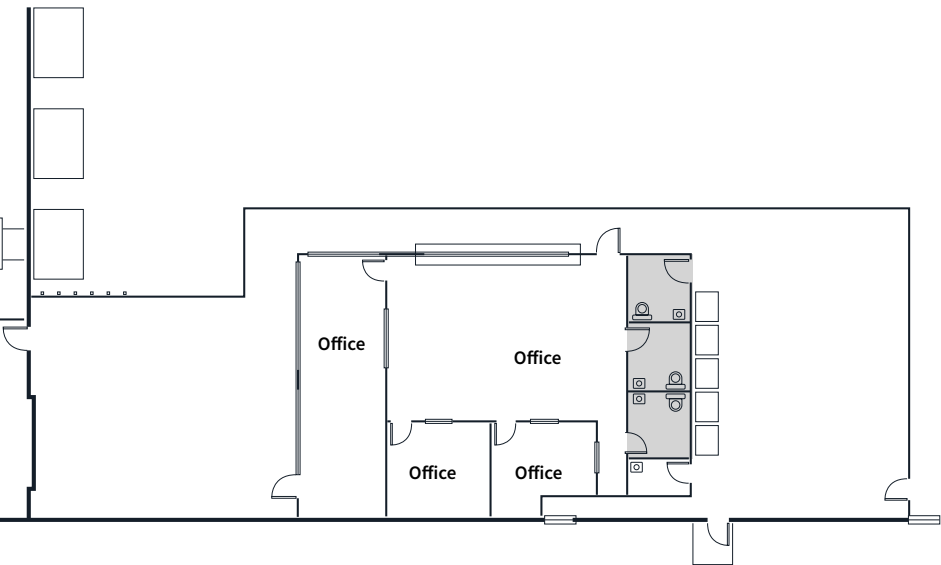
- ESFR Sprinkler system (K-25 heads)
- 1,600 Amps of power
- LED Warehouse lighting
- Class A warehouse facility



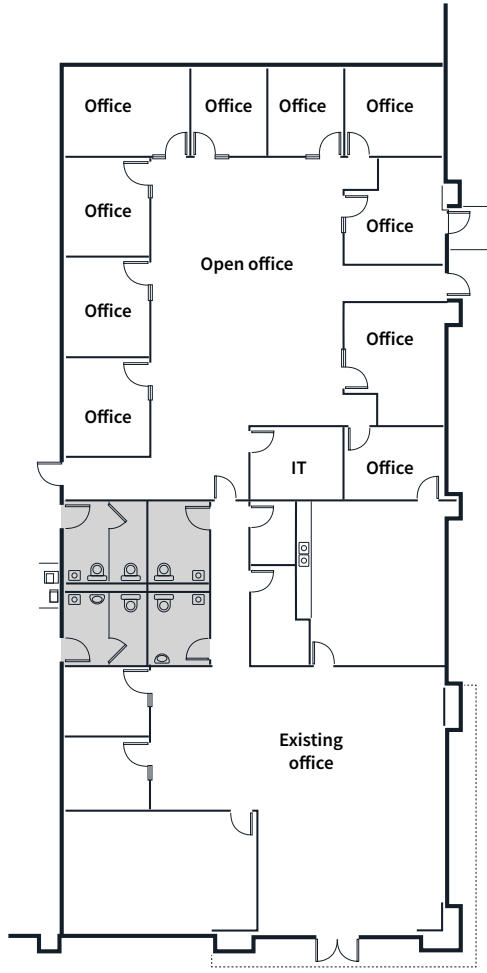
Site Plan



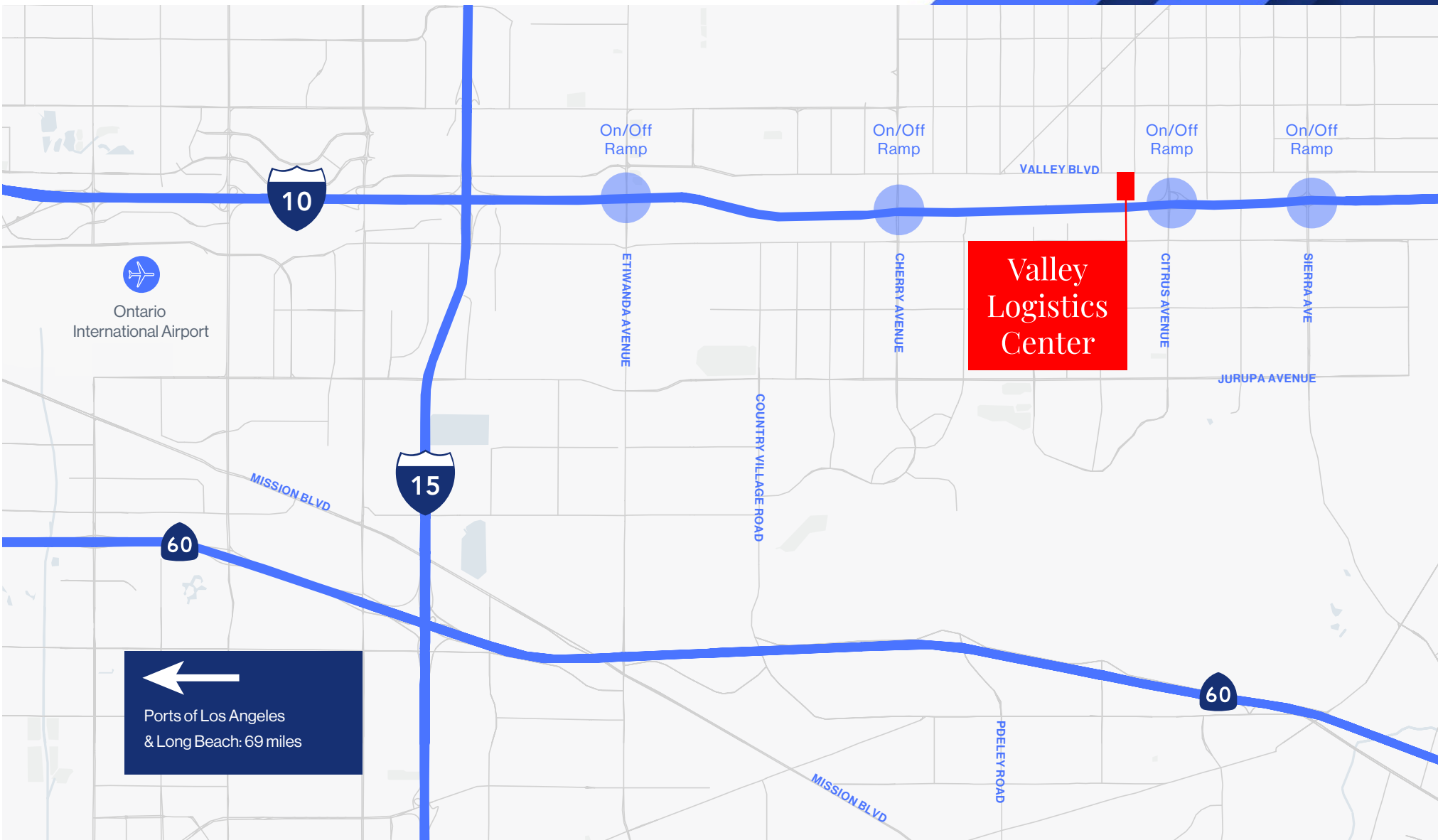
Office Plans



Southwest Office
1,500 SF



Southeast Office
5,256 SF



**Valley
Logistics
Center**

←
Ports of Los Angeles
& Long Beach: 69 miles

Fast Access
to I-10 Freeway
and Interstate I-15

Access to	Distance (Miles)
Union Pacific Intermodal Yard	5
Ontario International Airport	9
BNSF Intermodal Yard	11
San Bernardino International Airport	15
Los Angeles International Airport	64
Ports of Los Angeles & Long Beach	69

Distance (Miles)

5
9
11
15
64
69



Valley Logistics Center

15895 Valley Blvd., Fontana, CA 92335



Scott Coyle

scott.coyle@jll.com

+1909 467 6870

License #: 02066670

Chase Berry

chase.berry@jll.com

+1909 467 6877

License #: 02196093

Ally Doherty

ally.doherty@jll.com

+1949 677 5155

License #: 02193365

Patrick Wood

patrick.wood@jll.com

+1909 467 6857

RE License #: 01776274

Although information has been obtained from sources deemed reliable, JLL does not make any guarantees, warranties or representations, express or implied, as to the completeness or accuracy as to the information contained herein. Any projections, opinions, assumptions or estimates used are for example only. There may be differences between projected and actual results, and those differences may be material. JLL does not accept any liability for any loss or damage suffered by any party resulting from reliance on this information. If the recipient of this information has signed a confidentiality agreement with JLL regarding this matter, this information is subject to the terms of that agreement. ©2026 Jones Lang LaSalle Brokerage, Inc. All rights reserved.