

STEVENSON ST

71

SAN FRANCISCO

Announcing!  
**Bonus Commission**  
\$4/psf per year to Procuring  
Brokers (up to 5-years) for  
leases **signed by 6/30/26**

Rental Rate  
Reduced and  
Starting at **\$44/psf**  
**FSG**

Contact Listing  
Broker for Details

**Jean Ko**

415-810-1914

Jean.ko@jll.com

RE Lic# 01184706

**RAW** Celebrating  
50 Years  
1970-2020

**JLL**<sup>®</sup>

# PREMIER SAN FRANCISCO CLASS A BUILDING

Uniquely positioned just off Market and Mission Street, between 1st and 2nd Street, the building is just a block from BART. 71 Stevenson is in the heart of San Francisco's vibrant South Financial district - one of the hottest neighborhoods in town. This Class A office building is situated amongst a plethora of upscale restaurants, trendy cafés, museums, world class hotels, chic fitness centers, public transportation hubs and easy access to the freeway.

71 Stevenson's 12,000 to 18,000 +/- square foot typical floor sizes are well suited for single or multi-floor users. The building's upper floors have spectacular views while the lower floors have great natural light and city views. The building's updated elevator system and current multi-million dollar lobby renovation, in-house parking garage, easy access to BART, Muni and other public transportations, bike storage, EV charging stations, offer one of the best and synergistic environments for companies striving to attract top talent. The building ownership has continued to invest in the infrastructure and efficient energy upgrades. In addition to be a certified Energy Star Building, the property was awarded the coveted Gold LEED certification by the US Green Building Council in 2018.

Built in 1987, the building has been upgraded in numerous ways. 71 Stevenson combines elegant architecture with modern sophistication and technology. The 23-story Class A building is home to a variety of different tenants such as Professional Services, Technology, and Non-Profits, among others.



# PROJECT HIGHLIGHTS



**CLASS A**  
Building



**ON-SITE**  
Parking



**BART / MUNI**  
Access



**LEED GOLD**  
Certified



**SPECTACULAR VIEWS**  
from Upper Floors



**GROUND ZERO**  
Transbay Terminal  
Location



**GREAT NATURAL**  
Light



**ENERGY STAR**  
Building





Reception



Colonnade Entrance

# NEW LOBBY

NOW COMPLETED



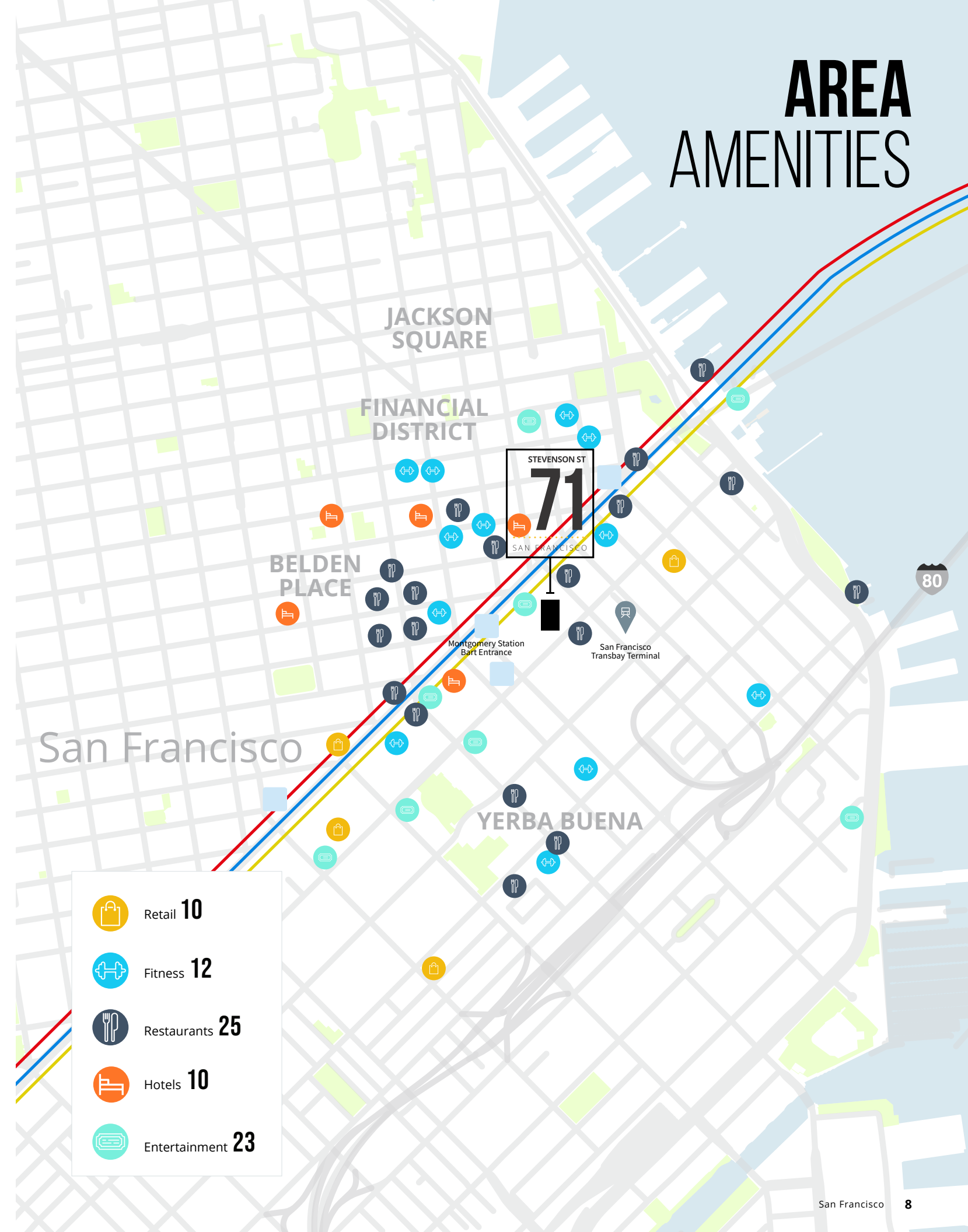
Stevenson St. Lounge




Colonnade Lounge



# AREA AMENITIES

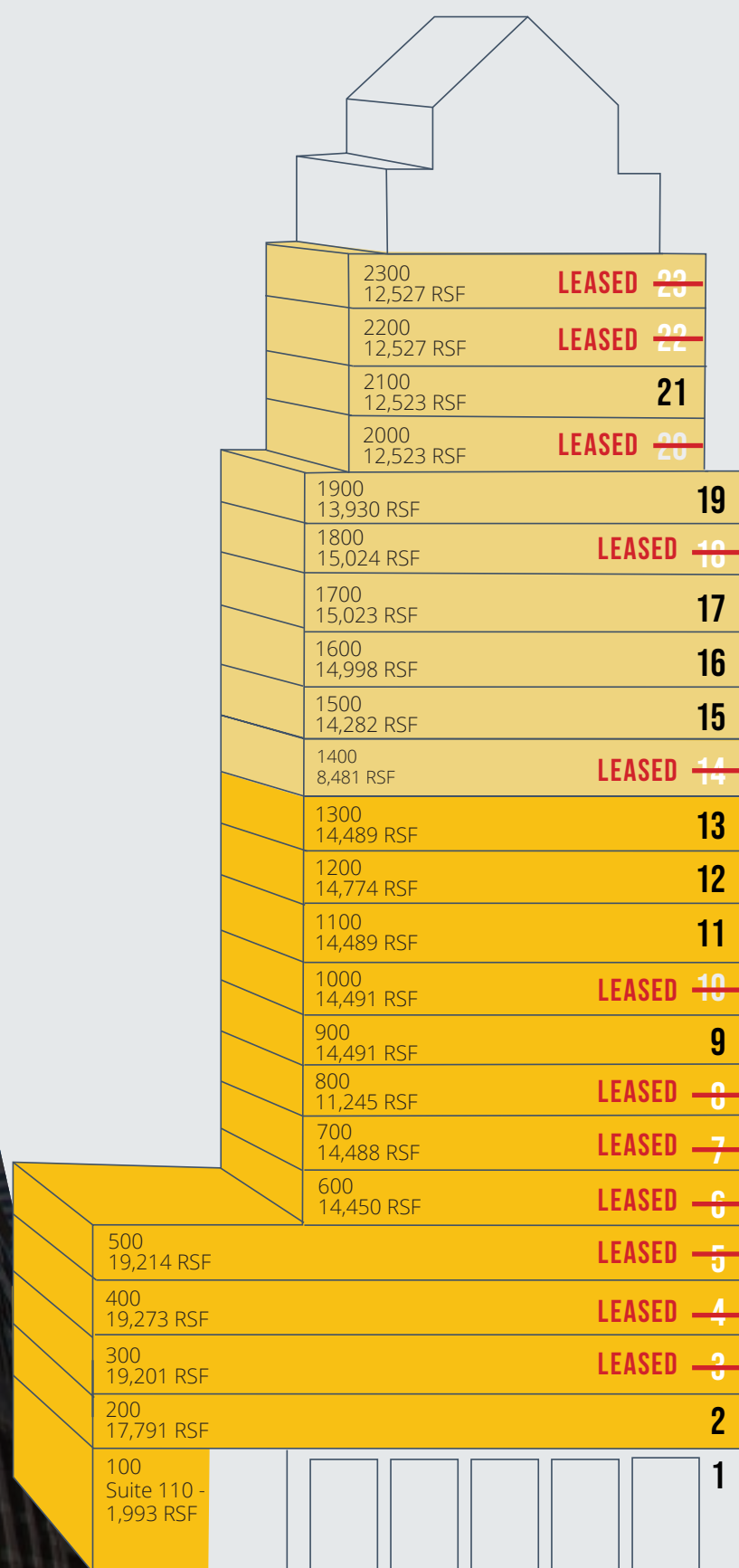


-  Retail **10**
-  Fitness **12**
-  Restaurants **25**
-  Hotels **10**
-  Entertainment **23**



- 1 Lending Club
- 2 Citigroup, Wish.com
- 3 Okta
- 4 Deloitte
- 5 LinkedIn
- 6 Salesforce
- 7 KPMG
- 8 Sephora
- 9 JP Morgan Chase & EY
- 10 Twitch
- 11 First Republic
- 12 IBM
- 13 Wells Fargo
- 14 Slack
- 15 Blackrock

# CORPORATE NEIGHBORS



## UPPER ELEVATOR BANK

## LOWER ELEVATOR BANK

## UPPER ELEVATOR 70,756 RSF

- ~~23rd Floor - 12,527 RSF~~ **LEASED**
- ~~22nd Floor - 12,527 RSF~~ **LEASED**
- 21st Floor - 12,523 RSF**
- ~~20th Floor - 12,523 RSF~~ **LEASED**
- 19th Floor - 13,930 RSF**
- ~~18th Floor - 15,024 RSF~~ **LEASED**
- 17th Floor - 15,023 RSF**
- 16th Floor - 14,998 RSF**
- 15th Floor - 14,282 RSF**
- ~~14th Floor - Suite 1425 - 2,149 RSF~~ **LEASED**
- ~~Suite 1450 - 6,332 RSF~~ **LEASED**

## LOWER ELEVATOR 78,027 RSF

- 13th Floor - 14,489 RSF**
- 12th Floor - 14,774 RSF**
- 11th Floor - 14,489 RSF**
- ~~10th Floor - Suite 1000 - 14,491 RSF~~ **LEASED**
- ~~Suite 1050 - 3,067 RSF~~ **LEASED**
- 9th Floor - 14,491 RSF**
- ~~8th Floor - 11,245 RSF~~ **LEASED**
- ~~7th Floor - 14,488 RSF~~ **LEASED**
- ~~6th Floor - 14,450 RSF~~ **LEASED**
- ~~5th Floor - 19,214 RSF~~ **LEASED**
- ~~4th Floor - 19,273 RSF~~ **LEASED**
- ~~3rd Floor - 19,201 RSF~~ **LEASED**
- 2nd Floor - 17,791 RSF**
- 1st Floor - 1,993 RSF**


# AVAILABLE SUITES


# FLOOR PLANS


## 1<sup>ST</sup> FLOOR

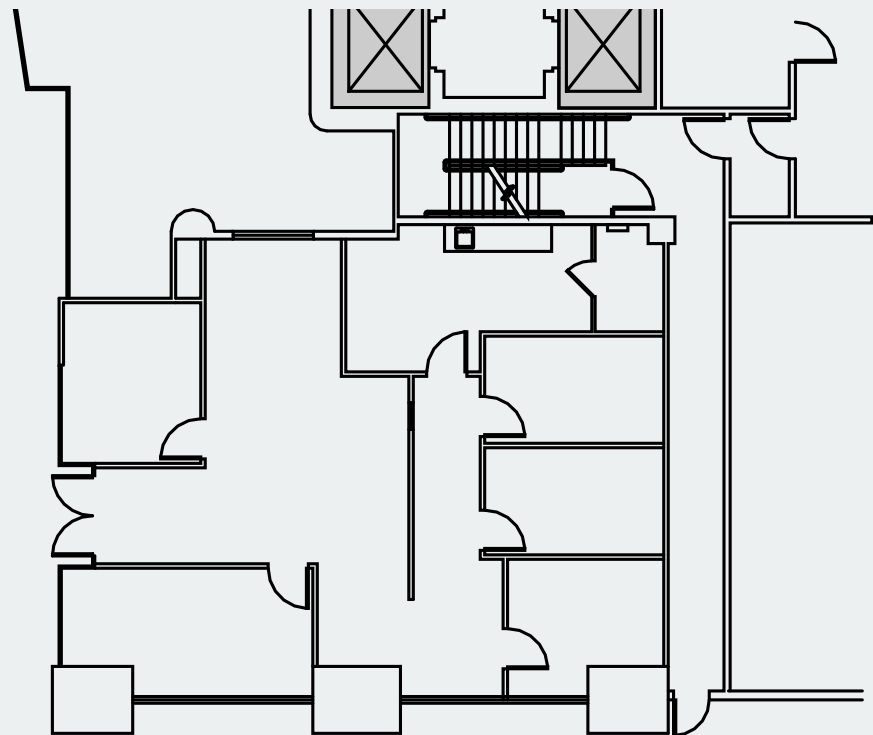
Ground Floor  
Suite 110 - 1,993 RSF  
Retail/ Office Space

 Video Tour

 5 Meeting Rooms

 Enclosed Kitchen

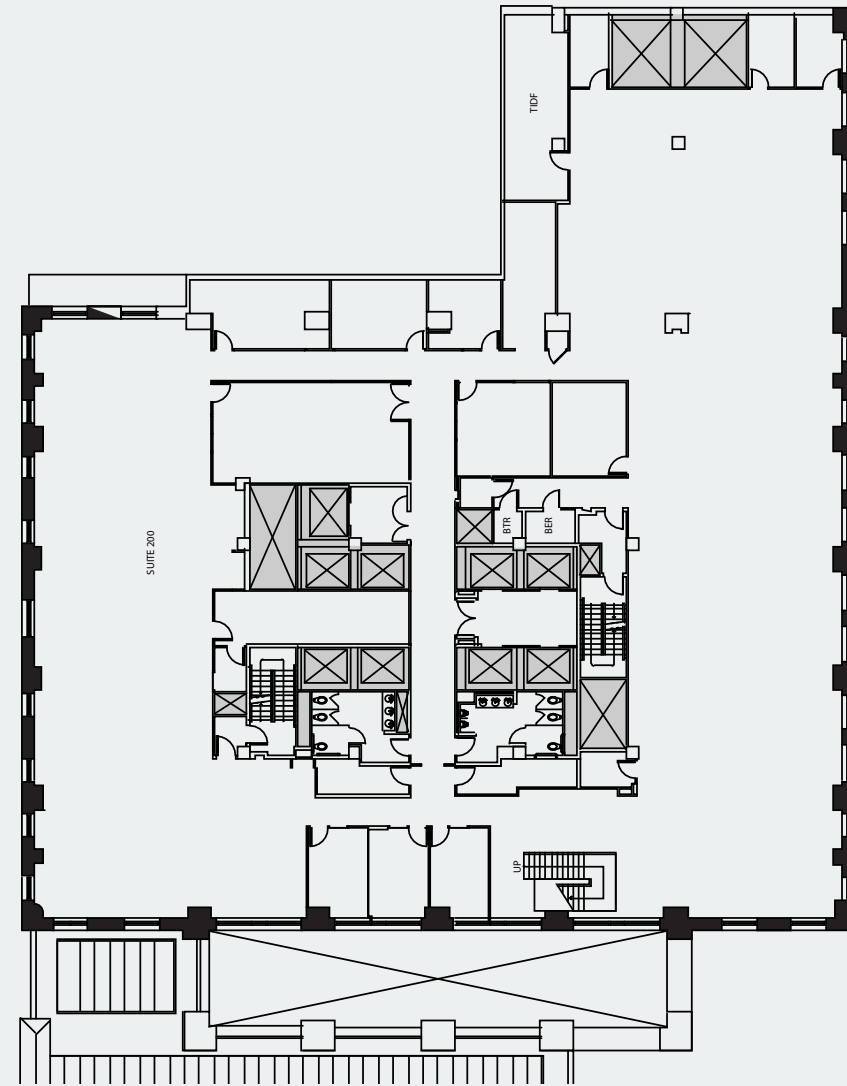
 Independent Identity  
from Plaza near Jessie  
Street



## 2<sup>ND</sup> FLOOR

17,791 RSF  
Asking \$44 FS

 3D Virtual Tour



For leasing contact

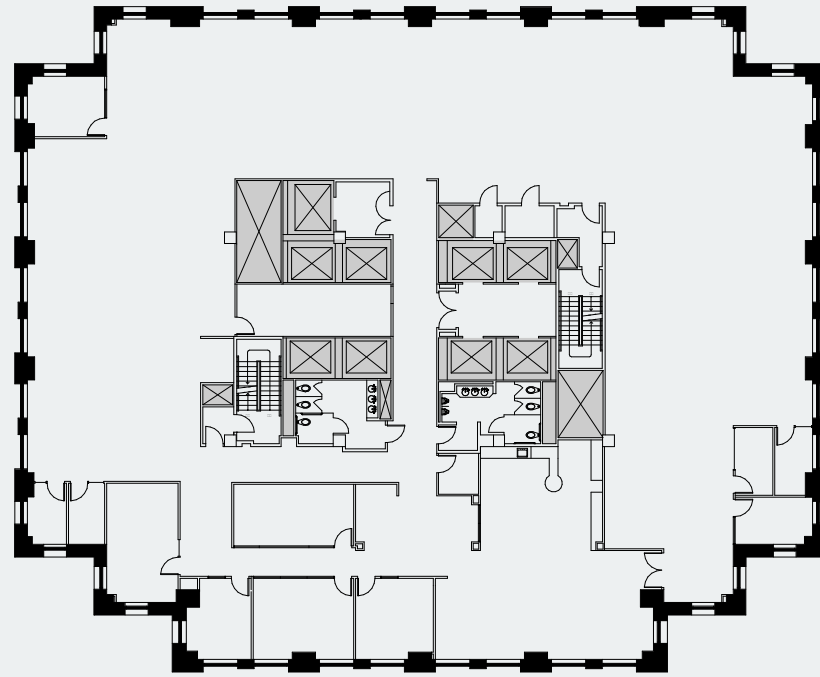
**Jean Ko**  
415-810-1914  
Jean.ko@jll.com  
RE Lic# 01184706



# 9<sup>TH</sup> FLOOR

14,491 RSF  
Asking \$47 FS

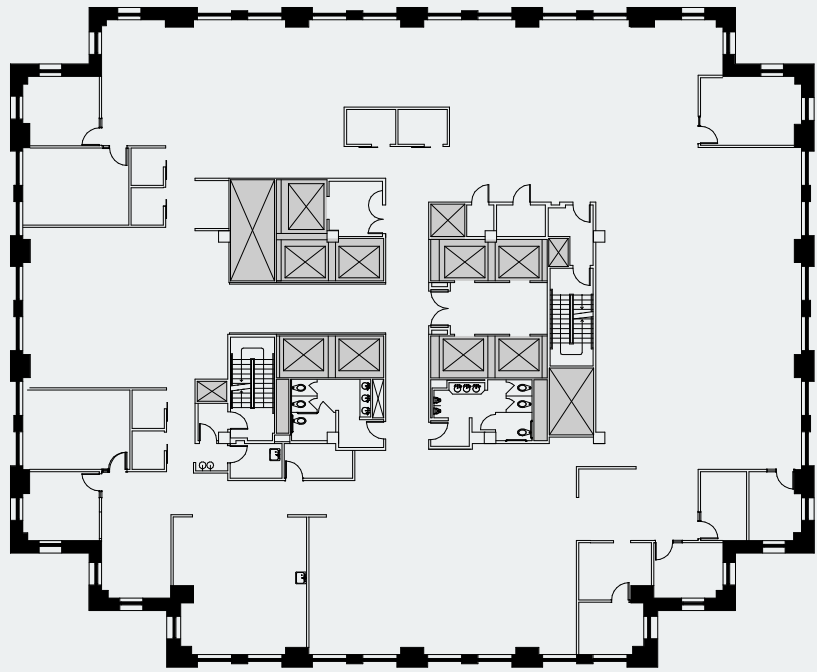
 3D Virtual Tour



# 11<sup>TH</sup> FLOOR

14,489 RSF  
Asking \$49 FS

 3D Virtual Tour



**For leasing contact**

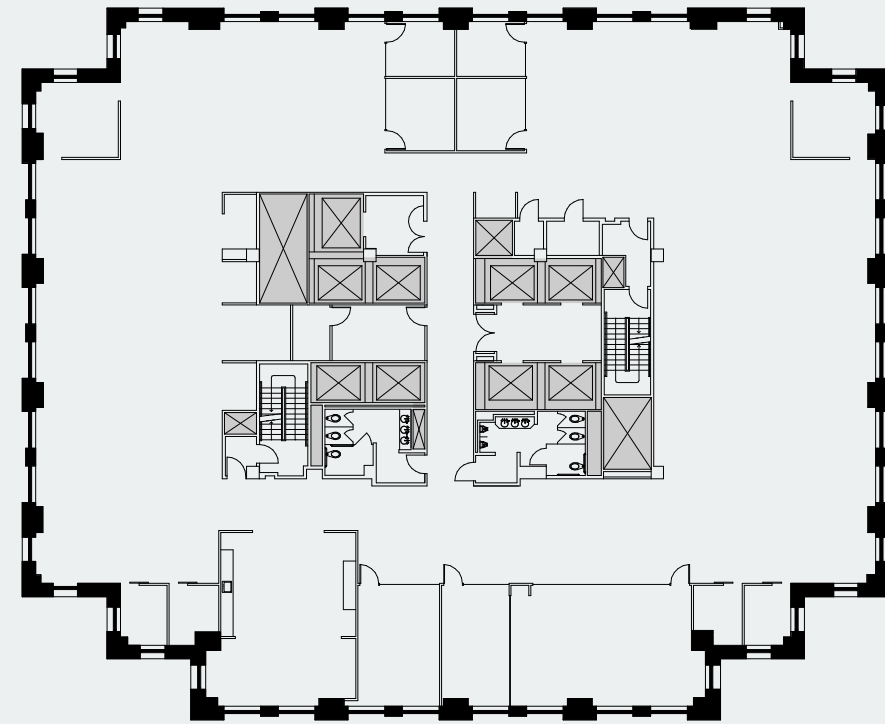
**Jean Ko**  
415-810-1914  
Jean.ko@jll.com  
RE Lic# 01184706



# 12<sup>TH</sup> FLOOR

14,774 RSF  
Asking \$49 FS

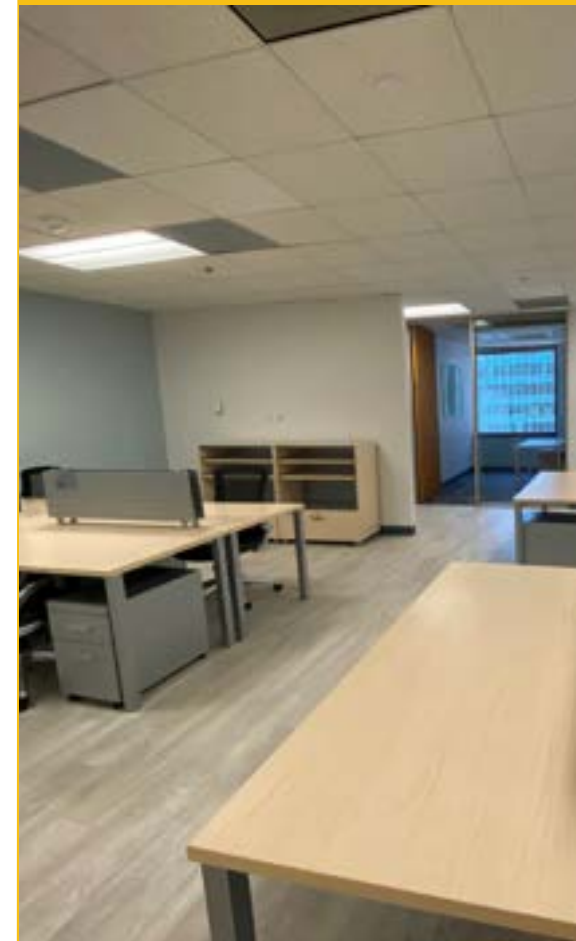
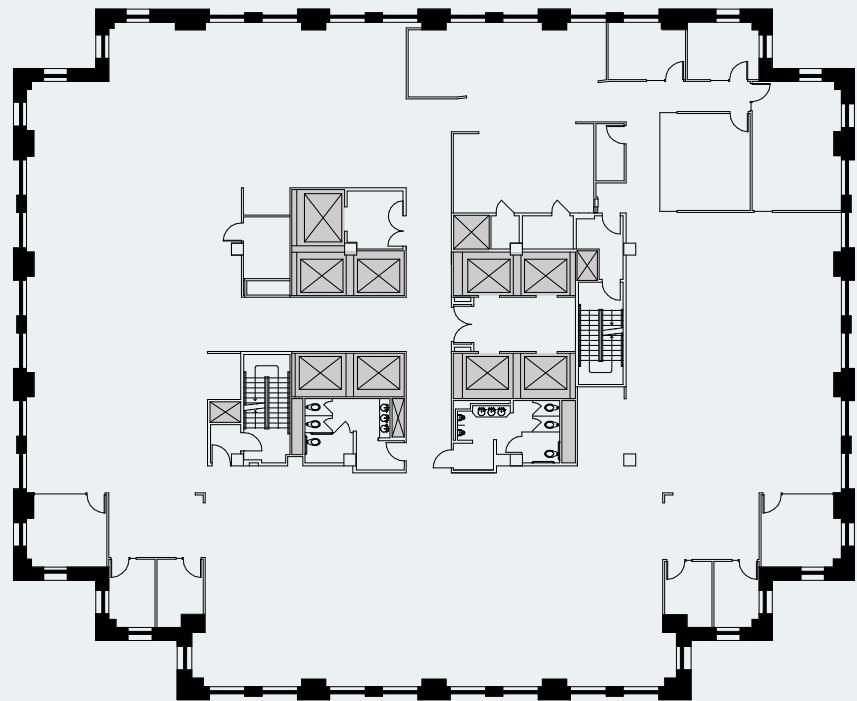
 3D Virtual Tour



# 13<sup>TH</sup> FLOOR

14,489 RSF  
Asking \$49 FS

 3D Virtual Tour



**For leasing contact**

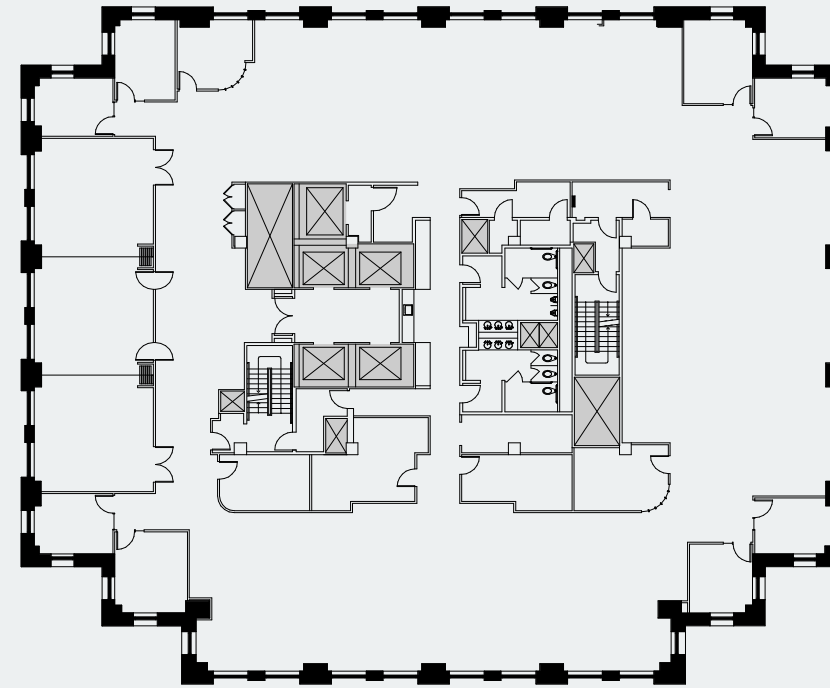
**Jean Ko**  
415-810-1914  
Jean.ko@jll.com  
RE Lic# 01184706



# 15<sup>TH</sup> FLOOR

14,282 RSF  
Asking \$51 FS

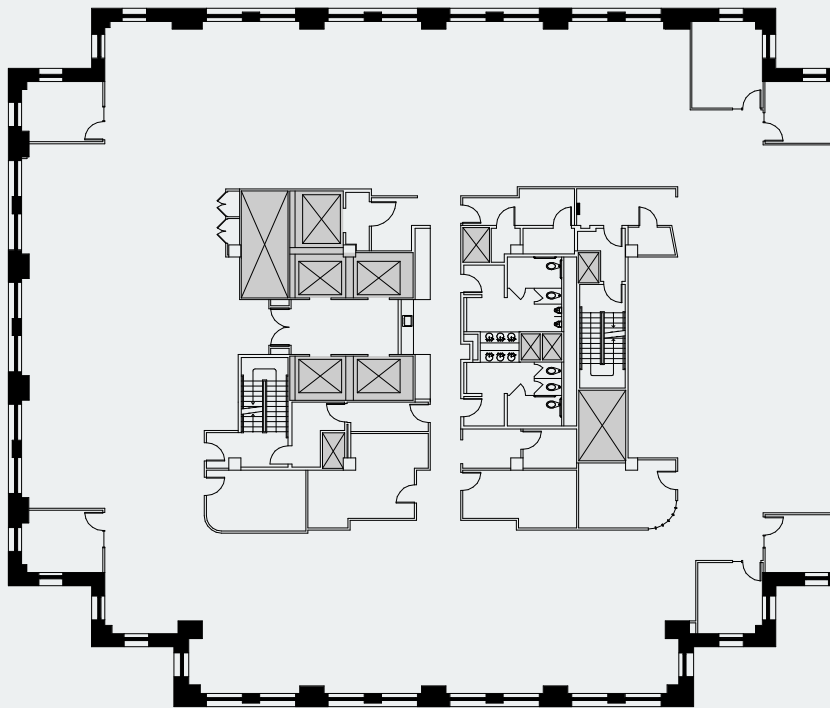
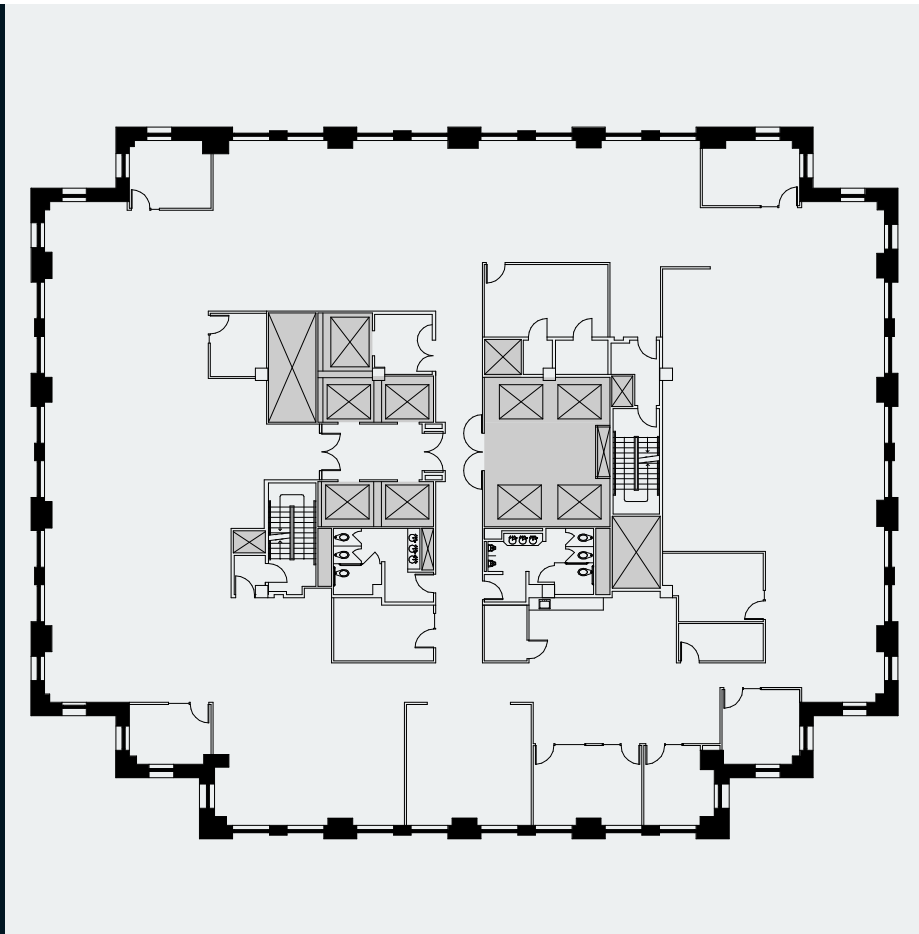
 3D Virtual Tour



# 16<sup>TH</sup> FLOOR

14,998 RSF  
Asking \$51 FS

 3D Virtual Tour



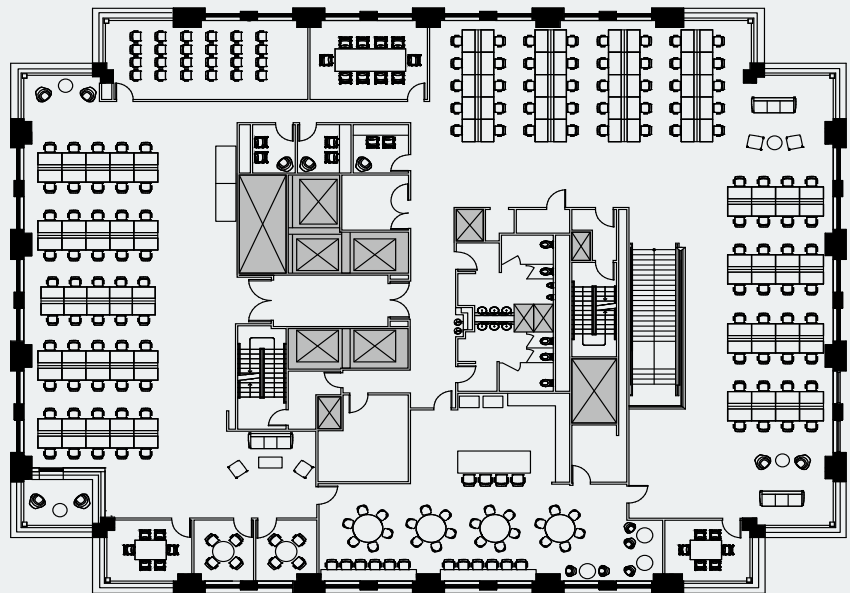
# 17<sup>TH</sup> FLOOR

15,023 RSF  
Asking \$53 FS

 3D Virtual Tour

**For leasing contact**

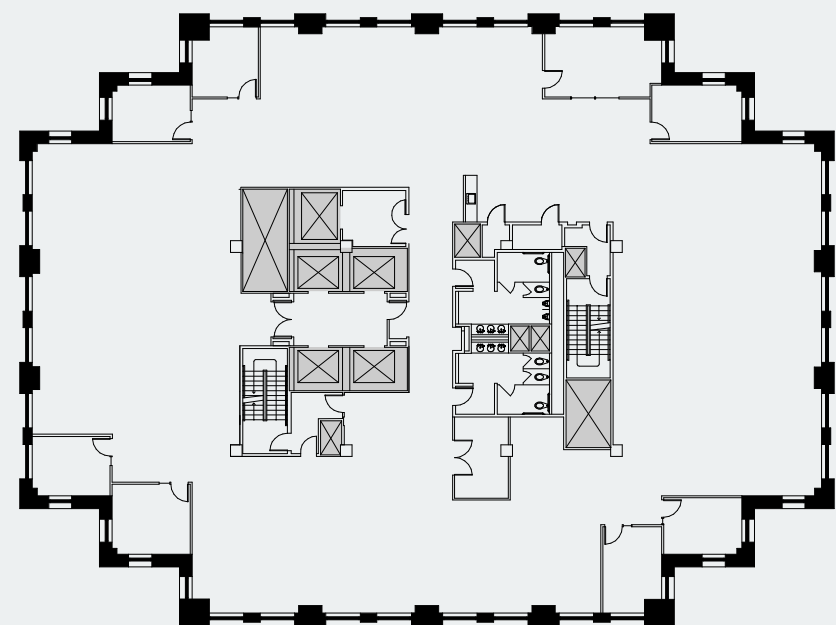
**Jean Ko**  
415-810-1914  
Jean.ko@jll.com  
RE Lic# 01184706



## 19<sup>TH</sup> FLOOR

13,930 RSF  
Asking \$53 FS

 [3D Virtual Tour](#)



## 21<sup>ST</sup> FLOOR

12,523 RSF  
Asking \$57 FS

 [3D Virtual Tour](#)

STEVENSON ST

# 71

SAN FRANCISCO

Although information has been obtained from sources deemed reliable, neither Owner nor JLL makes any guarantees, warranties or representations, express or implied, as to the completeness or accuracy as to the information contained herein. Any projections, opinions, assumptions or estimates used are for example only. There may be differences between projected and actual results, and those differences may be material. The Property may be withdrawn without notice. Neither Owner nor JLL accepts any liability for any loss or damage suffered by any party resulting from reliance on this information. If the recipient of this information has signed a confidentiality agreement regarding this matter, this information is subject to the terms of that agreement. ©2022. Jones Lang LaSalle IP, Inc. All rights reserved.

**Jean Ko**  
415-810-1914  
Jean.ko@jll.com  
RE Lic# 01184706

