



SEE A BRIGHTER WAY

For Lease

101 S. Main Street
Ann Arbor, Michigan

Property Highlights

- 4,259 - 9,007 SF available
- Located in the heart of downtown Ann Arbor
- Excellent space for office or retail
- Close proximity to freeways and U of M campus

Asking rent: \$29.50 SF MG + Utilities & Janitorial

JLL

AJ Weiner

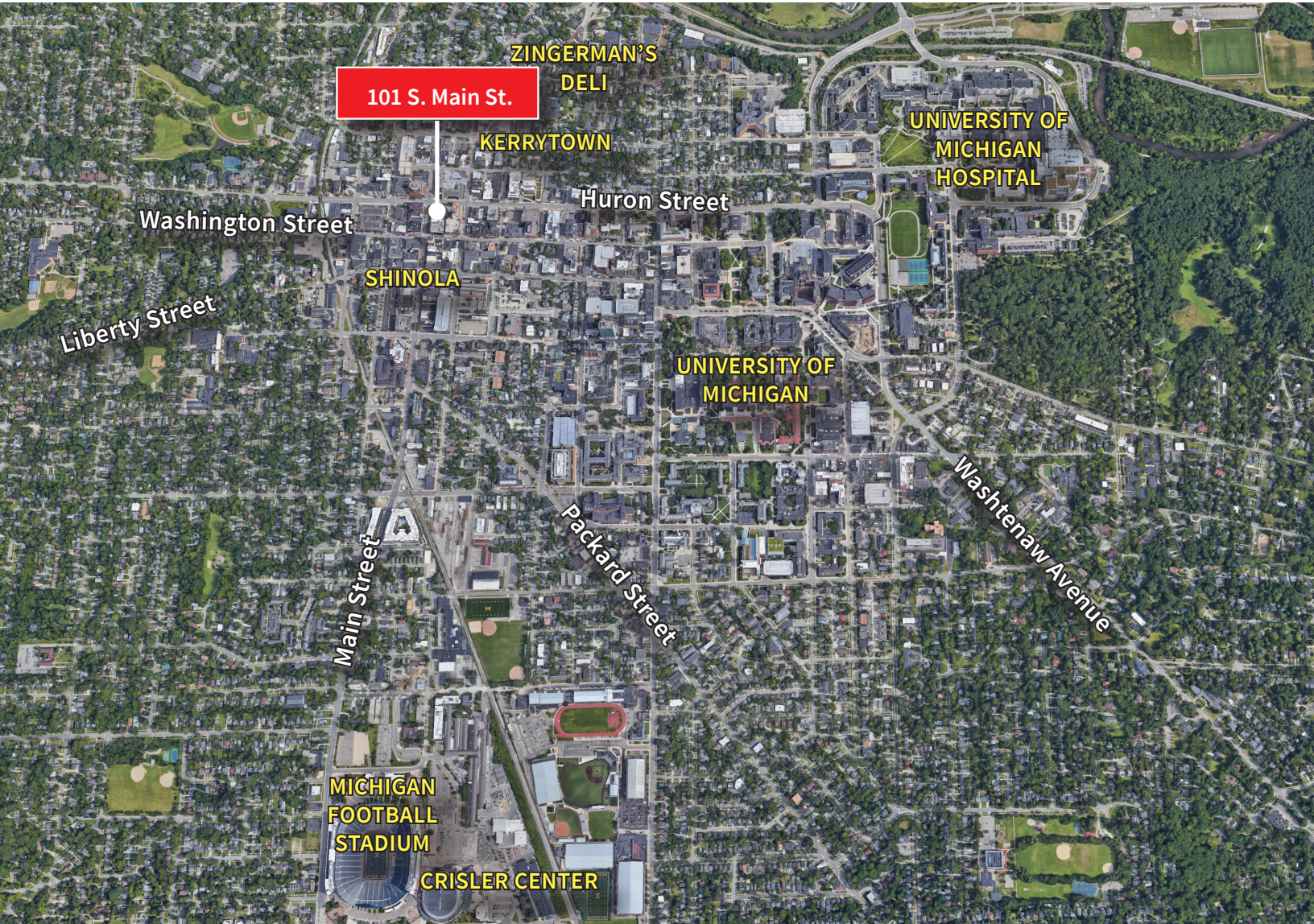
aj.weiner@jll.com

+1 248 581 3335

Colin McCausland

colin.mccausland@jll.com

+1 248 581 3308



JLL

AJ Weiner

aj.weiner@jll.com

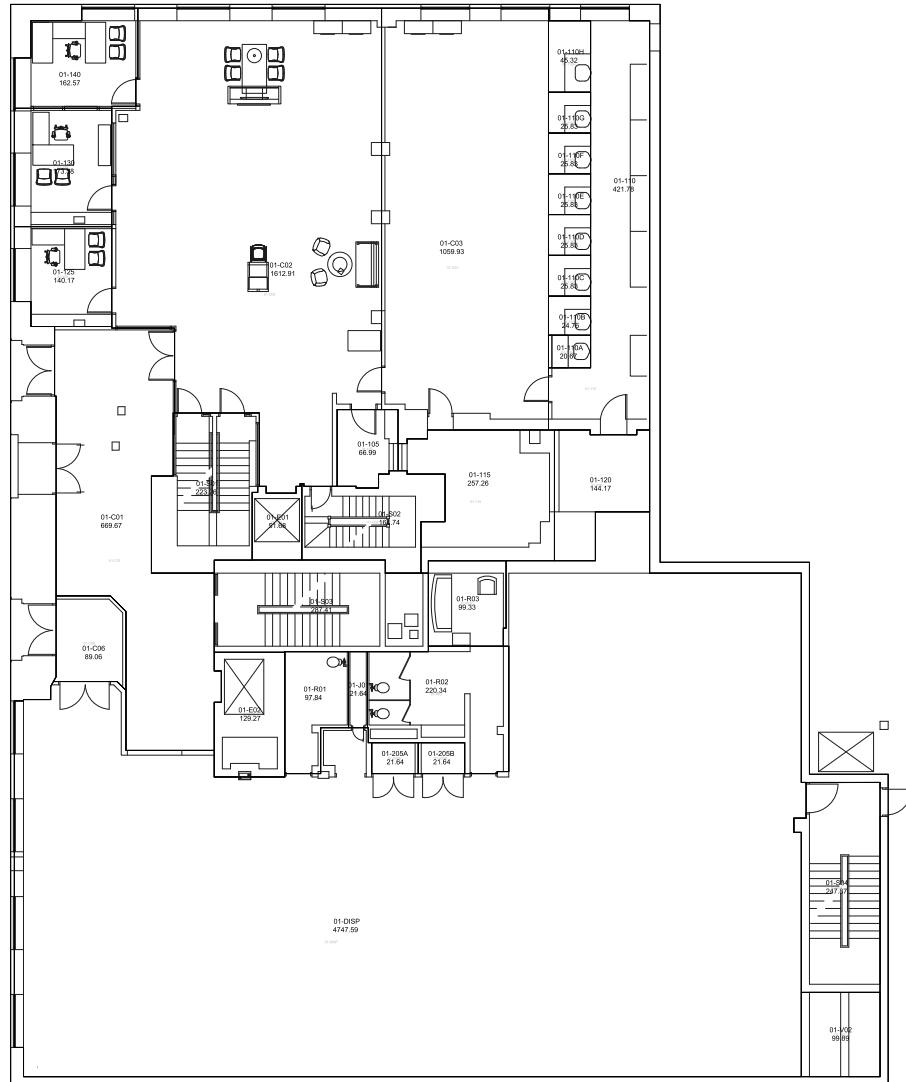
+1 248 581 3335

Colin McCausland

colin.mccausland@jll.com

+1 248 581 3308

First Floor Plan
9,007 SF



JLL

AJ Weiner
aj.weiner@jll.com
+1 248 581 3335

Colin McCausland
colin.mccausland@jll.com
+1 248 581 3308