

# Patriot Square Shopping Center

22 South Liberty Drive, Stony Point, NY



1,000 SF  
Available

## 1,000 SF Available for Lease

**David Townes**  
Managing Director  
+1 917 993 5515  
david.townes@jll.com

**Alana Friedman**  
Vice President  
+1 201 741 0990  
alana.friedman@jll.com



## Property Location

- » Situated in the heart of the Stony Point market
- » Prime location in Northern Rockland County
- » Prominent pylon signage
- » Ample parking available
- » Signalized entrance intersection on Route 9

## Space Availability

- » 1,000 SF
- » 20' Frontage X 50' Depth
- » Asking Rent: Upon Request

## Neighboring Tenants



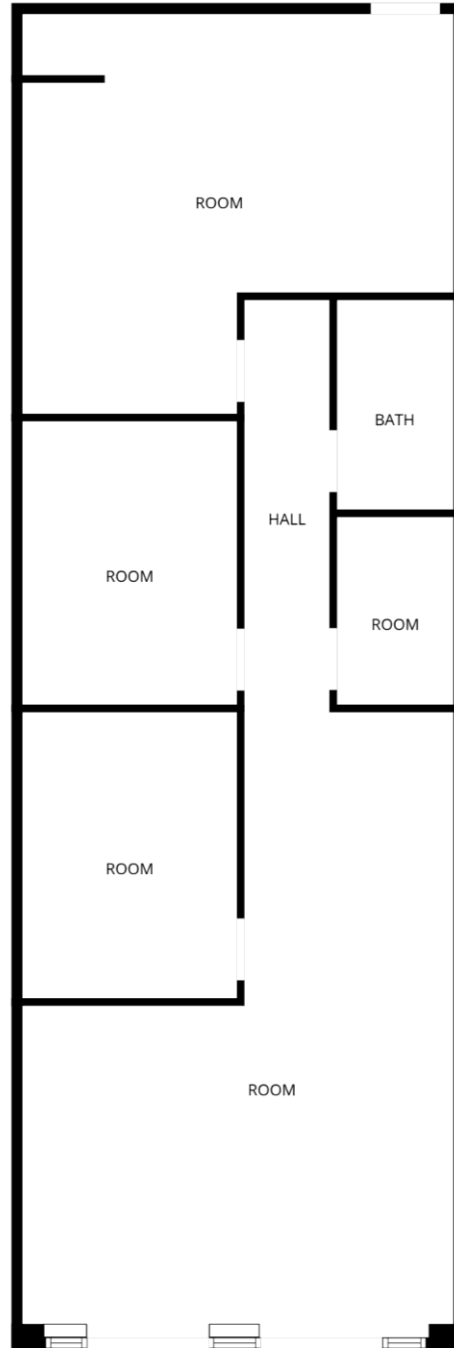
# Site Plan



Palisades Parkway  
Exit 15



# Floor Plan



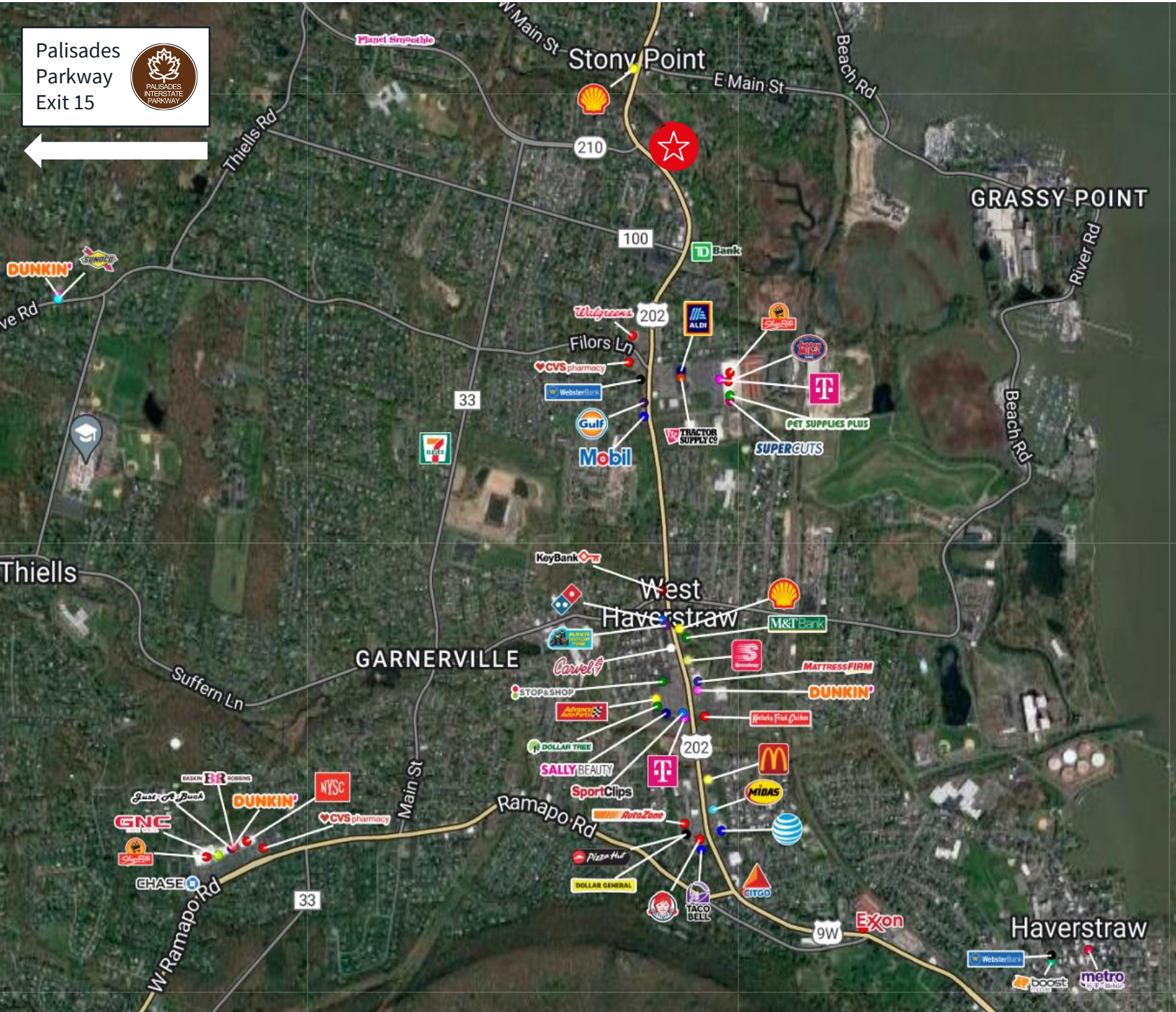
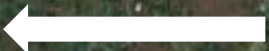
50' Depth

20' Frontage

# Interior Photos



Palisades Parkway  
Exit 15



# Demographics



**47,052**  
Population



**\$93,141**  
Med. HH Income



**10,762**  
Employees



**1,544**  
Businesses

David Townes  
Managing Director  
M +1 917 993 5515  
[david.townes@jll.com](mailto:david.townes@jll.com)

Alana Friedman  
Vice President  
M +1 201 741 0990  
[alana.friedman@jll.com](mailto:alana.friedman@jll.com)

Although information has been obtained from sources deemed reliable, JLL does not make any guarantees, warranties or representations, express or implied, as to the completeness or accuracy as to the information contained herein. Any projections, opinions, assumptions or estimates used are for example only. There may be differences between projected and actual results, and those differences may be material. JLL does not accept any liability for any loss or damage suffered by any party resulting from reliance on this information. If the recipient of this information has signed a confidentiality agreement with JLL regarding this matter, this information is subject to the terms of that agreement. ©2024. Jones Lang LaSalle IP, Inc. All rights reserved.

Demographics taken within 3 miles  
Source: Costar 2024