

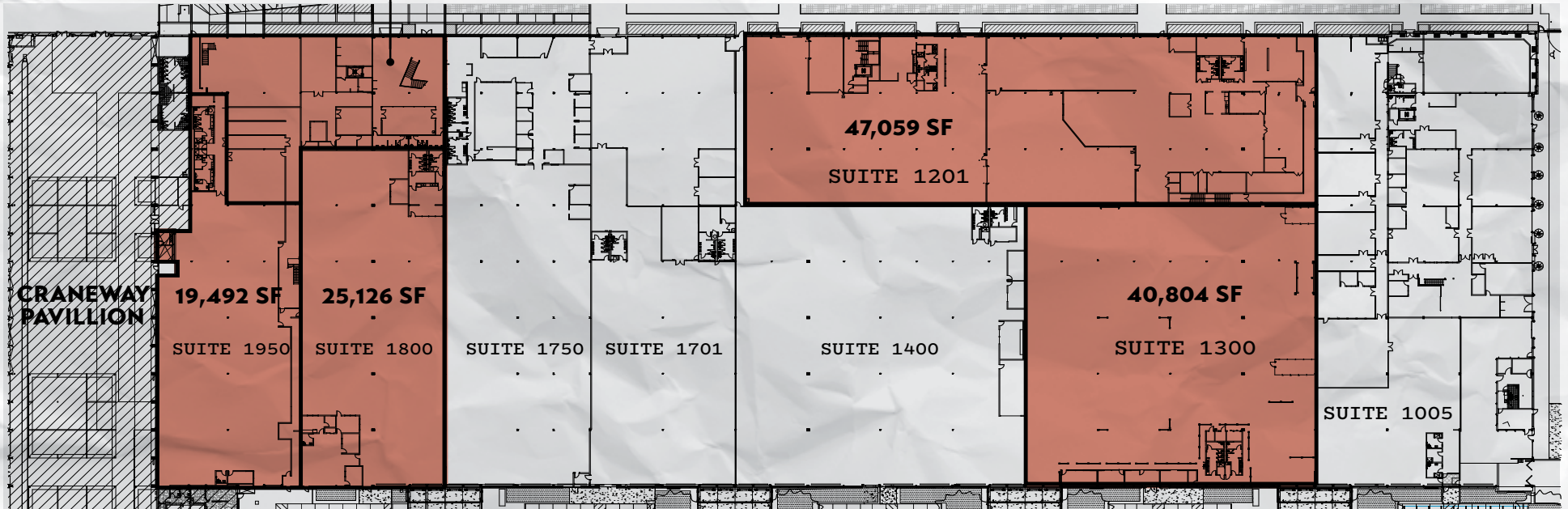
# FIRST FLOOR

## Power per suite:

- 1950 (19,492 SF) - 400 AMPS @ 480V (ADDITIONAL 200 AMPS @480V AVAILABLE)
- 1800 (25,126 SF) - 800 AMPS @ 208V, 3 PHASE
- 1201 (47,059 SF) - 800 AMPS @ 208V, 3 PHASE
- 1300 (40,804 SF) - 600 AMPS @ 480V, 3 PHASE

## FLOOR 1

Part of 2801



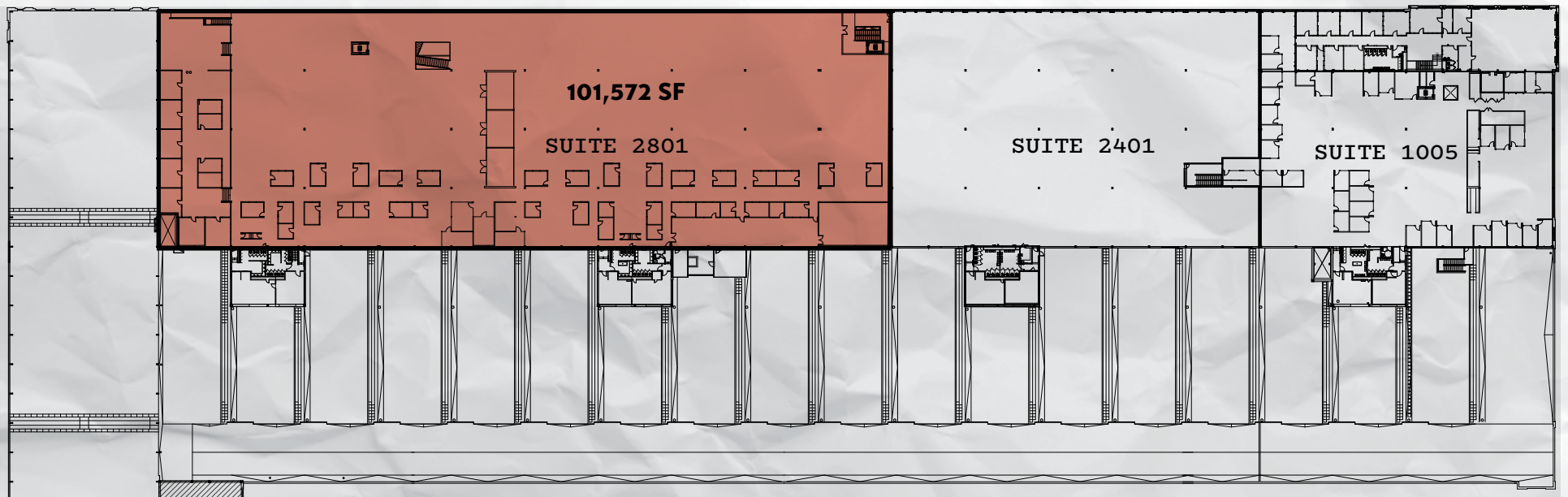
[View Individual Floor Plans](#)

# SECOND FLOOR

## FLOOR 2

### Power per suite:

- 2801 (101,572 SF) - 800 AMPS @ 480V + 800 AMPS @ 208V
- 



[View Individual Floor Plans](#)