

AVAILABLE FOR IMMEDIATE OCCUPANCY

# Purpose Built Lab Suites

Graduate Programs | Biotech Startups | Research Institutions



# University Place

4101 MARKET STREET, PHILADELPHIA, PA

[universityplacephl.com](http://universityplacephl.com)

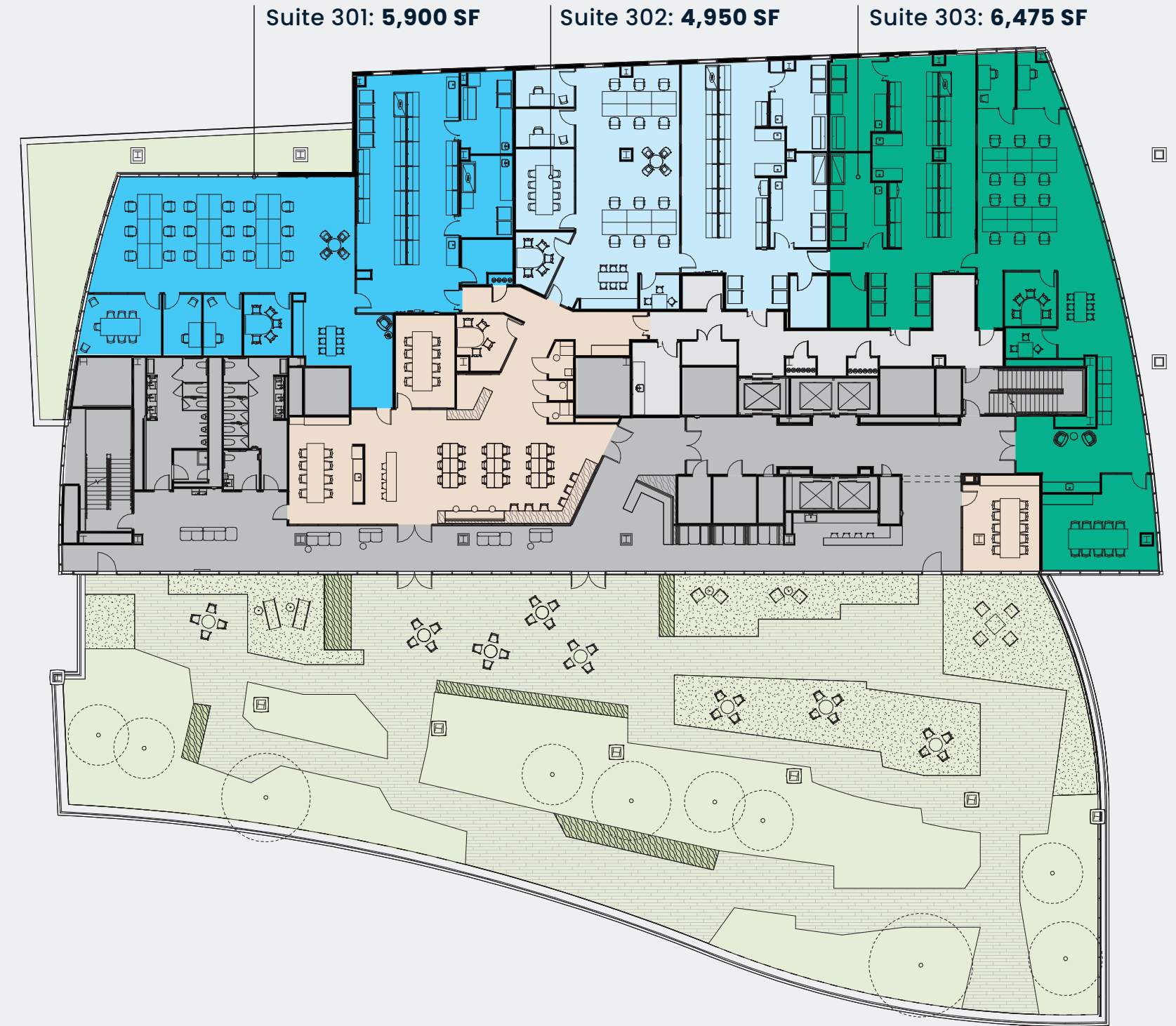


AVAILABLE FOR IMMEDIATE OCCUPANCY

# Spec Suites | 18,513 RSF

Pre-Built Lab Suites + 14,450 SF Green Roof

- Suite 301
- Suite 302
- Suite 303
- Shared Amenity Space
- Shared Lab Support
- Common Area
- Venture Pavilion



**WEST LABS**  
Lab Management

**SMART GLASS**  
NO BLINDS, HEAT OR GLARE

**MERV-15**  
SEMCO CHILLED BEAMS

**100%**  
OUTDOOR FILTERED AIR

**18' Slab**  
HEIGHT

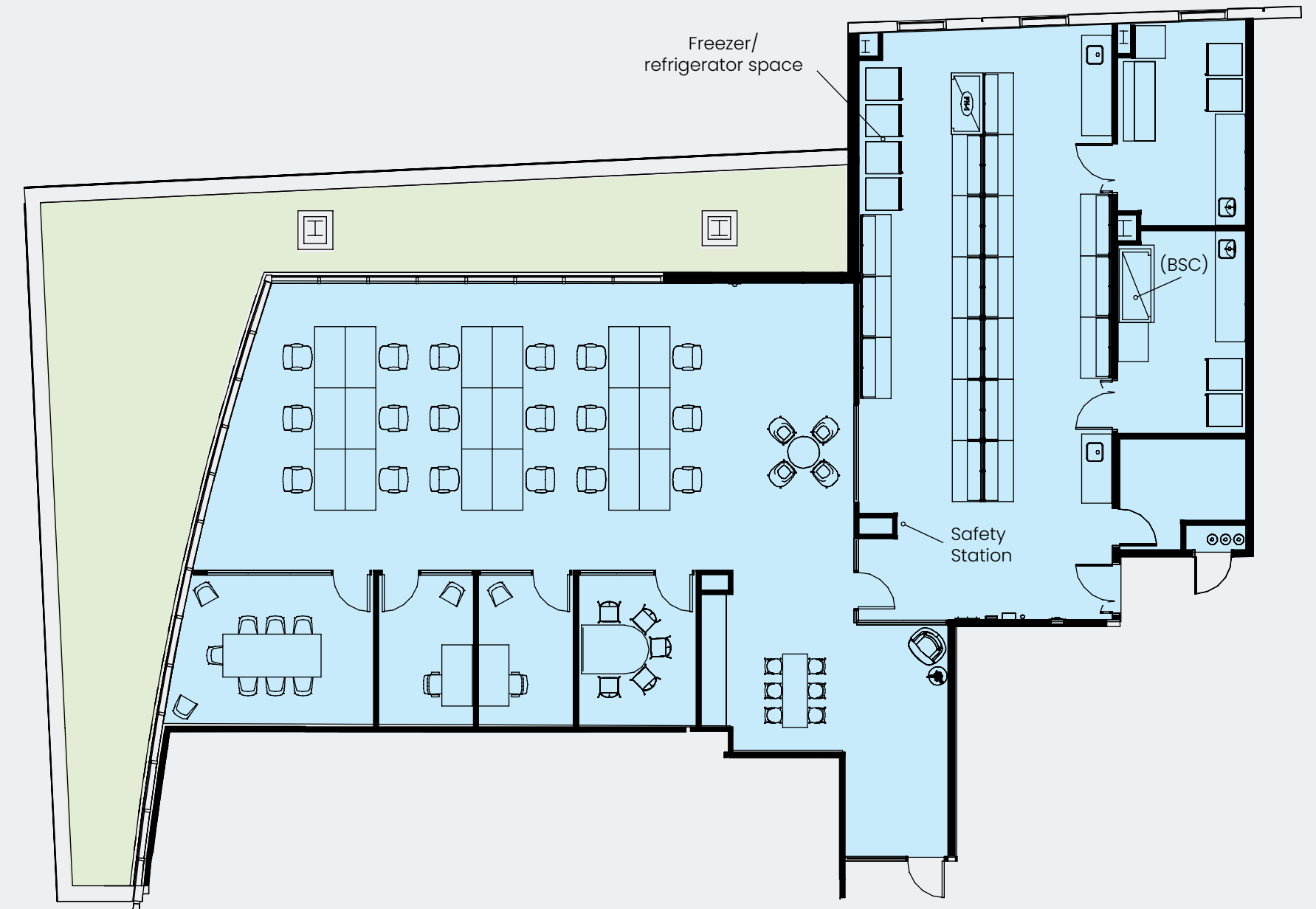
# Common Space



AVAILABLE FOR IMMEDIATE OCCUPANCY

# Suite 301 | 5,900 RSF

- 1 Fume Hood
- 1 Biosafety Cabinet (BSC)
- 1 Lab Storage Room
- 2 Tissue Culture Lab Rooms
- 2 Lab Sinks
- 2 Private Offices
- 2 Conference Rooms (1 Small, 1 Large)
- 18 Workstations
- 19 Lab Benches
- 1 Digital Screen



# Suite 301



AVAILABLE FOR IMMEDIATE OCCUPANCY

# Suite 302 | 4,950 RSF

- 1 Fume Hood
- 1 Biosafety Cabinet (BSC)
- 1 Lab Storage Room
- 2 Tissue Culture Lab Rooms
- 2 Lab Sinks
- 2 Private Offices
- 3 Conference Rooms (1 Large, 2 Small)
- 12 Workstations
- 16 Lab Benches
- 1 Digital Screen



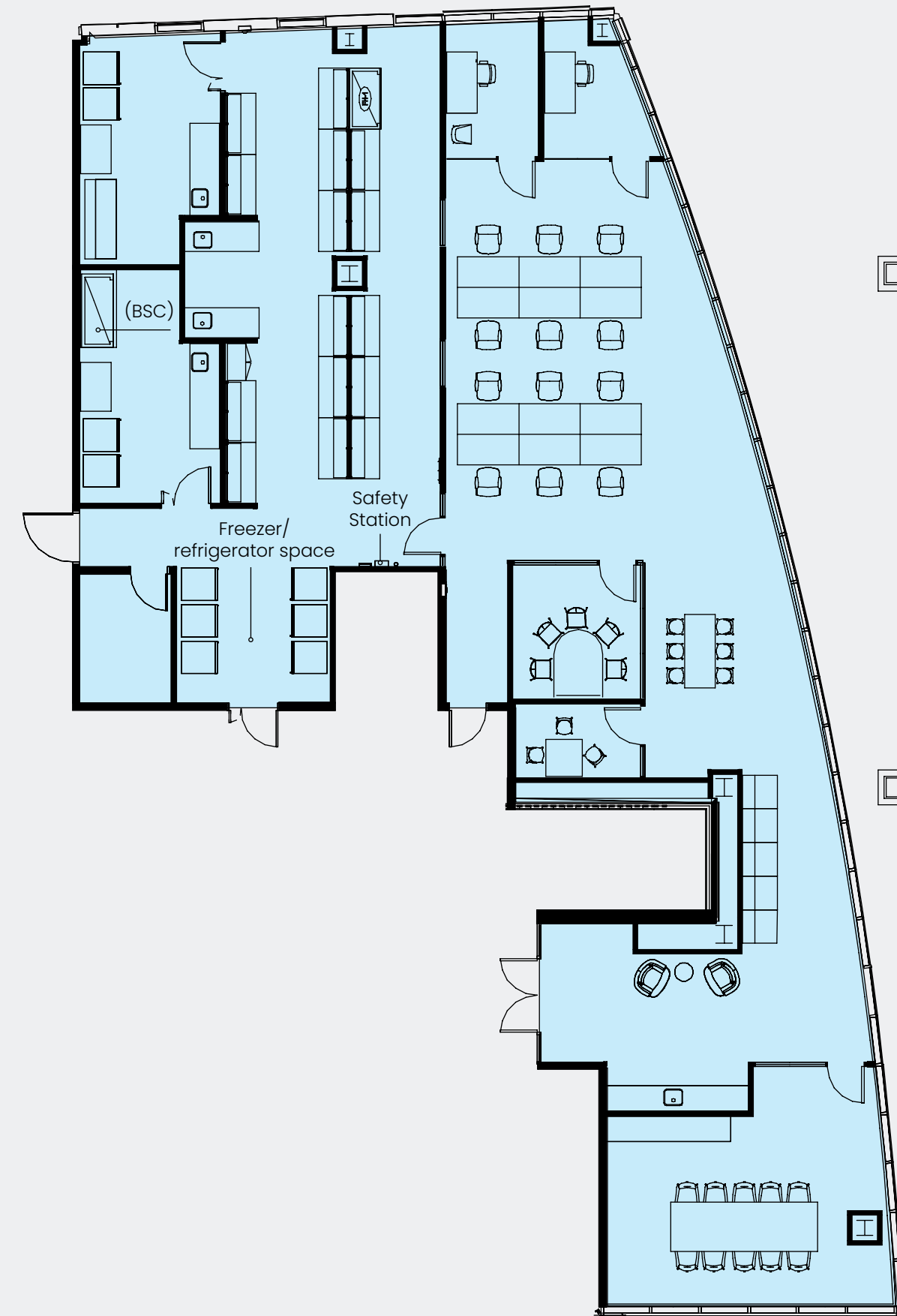
# Suite 302



AVAILABLE FOR IMMEDIATE OCCUPANCY

## Suite 303 | 6,475 RSF

- 1 Fume Hood
- 1 Biosafety Cabinet (BSC)
- 1 Lab Storage Room
- 2 Tissue Culture Lab Rooms
- 2 Lab Sinks
- 2 Private Offices
- 3 Conference Rooms (1 Large, 2 Small)
- 12 Workstations
- 15 Lab Benches
- 1 Digital Screen



# Suite 303



# Spec-Suite Equipment

## Individual Suite Lab Equipment & Infrastructure

### Lab Equipment (per suite)

- **Fisher Scientific** 6-foot fume hood and biosafety cabinet per suite, plus exhaust infrastructure in place for seamless future fume hood expansion
- Two **Thermo Scientific** refrigerators and one Thermo Scientific freezer with generator-backed power for sample protection
- Dedicated **Vacuubrand** vacuum pump positioned at fume hood location

### Lab Infrastructure

- **Fisher Scientific** modular lab casework supported by ceiling utility service panels providing ultimate flexibility for evolving research needs
- Pre-plumbed for two lab gas services delivered via dedicated cylinder closets located in service corridor (eliminates cylinder transport through lab space)
- **Beacon Medaes** oil-free compressed air supplied throughout each suite
- All lab sinks plumbed to central pH neutralization system for compliant waste discharge
- Dedicated storage equipment room included with each suite

## Shared Suite Amenities

### Central Glass Wash Facility

- **Labconco** lab glassware washer for efficient cleaning and turnaround
- **Getinge Lancer** 9.7 cu. ft. lab steam sterilizer ensuring contamination-free equipment
- **Hoshizaki** 80-pound ice maker providing consistent lab-grade ice supply
- **Milli-Q** IQ 7010 water purification system with 100L storage tank feeding both washer and sterilizer, plus point-of-use dispensing
- Dedicated wash sink and drainboard for manual processing

### Building Systems (building-maintained)

- **Beacon Medaes** oil-free air compressor providing reliable compressed air building-wide
- Diesel standby power generator ensuring uninterrupted operations during outages
- Central pH neutralization system treating acidic waste prior to sewer discharge
- Water softener system delivering pre-treated lab cold water—ready for tenant-installed purification systems at any sink location

### Shared Support Spaces

- Dedicated lab service corridor with direct service elevator access segregates back-of-house lab operations from office areas
- Common chemical storage closet accommodating tenant-provided secured cabinets for safe chemical staging
- Common freezer/refrigerator space offering supplemental cold storage capacity beyond individual suite equipment



#### No Gas Cylinder Handling

Pre-plumbed gas services via dedicated closets eliminate the need to transport cylinders through lab space.



#### Generator-Backed Refrigeration

Critical equipment maintains power during outages to protect valuable samples and research.



#### Expansion-Ready Infrastructure

Add fume hoods and reconfigure lab systems with minimal disruption to ongoing operations.

## Broker Contacts

**Joe Colletti**

+1 215 416 2343  
joe.colletti@jll.com

**Eric Berkowitz**

+1 610 416 2226  
eric.berkowitz@jll.com

**Alex Breitmayer**

+1 267 303 6755  
alex.breitmayer@jll.com

[universityplacephl.com](http://universityplacephl.com)

Jones Lang LaSalle Brokerage, Inc.  
1700 Market Street, Suite 2400  
Philadelphia, PA 19013  
+ 215 988 5500

Legal Disclaimer: Although information has been obtained from sources deemed reliable, neither Owner nor JLL makes any guarantees, warranties or representations, express or implied, as to the completeness or accuracy as to the information contained herein. Any projections, opinions, assumptions or estimates used are for example only. There may be differences between projected and actual results, and those differences may be material. The Property may be withdrawn without notice. Neither Owner nor JLL accepts any liability for any loss or damage suffered by any party resulting from reliance on this information. If the recipient of this information has signed a confidentiality agreement regarding this matter, this information is subject to the terms of that agreement.

©2026. Jones Lang LaSalle IP, Inc. All rights reserved.

