

**4,074 SF**  
AVAILABLE NOW



11095 Flintkote Street, Suite D



**Exclusive leasing agents:**

Chad Urie  
tel +1 858 410 1187  
chad.urie@jll.com  
RE license #01261962

Grant Schoneman  
tel +1 858 410 1252  
grant.schoneman@jll.com  
RE license #01516695

Michelle Westoby  
tel +1 858 410 1190  
michelle.westoby@jll.com  
RE license #01377091

# 11095 FLINTKOTE AVENUE

SUITE D: 4,074 SF | AVAILABLE NOW

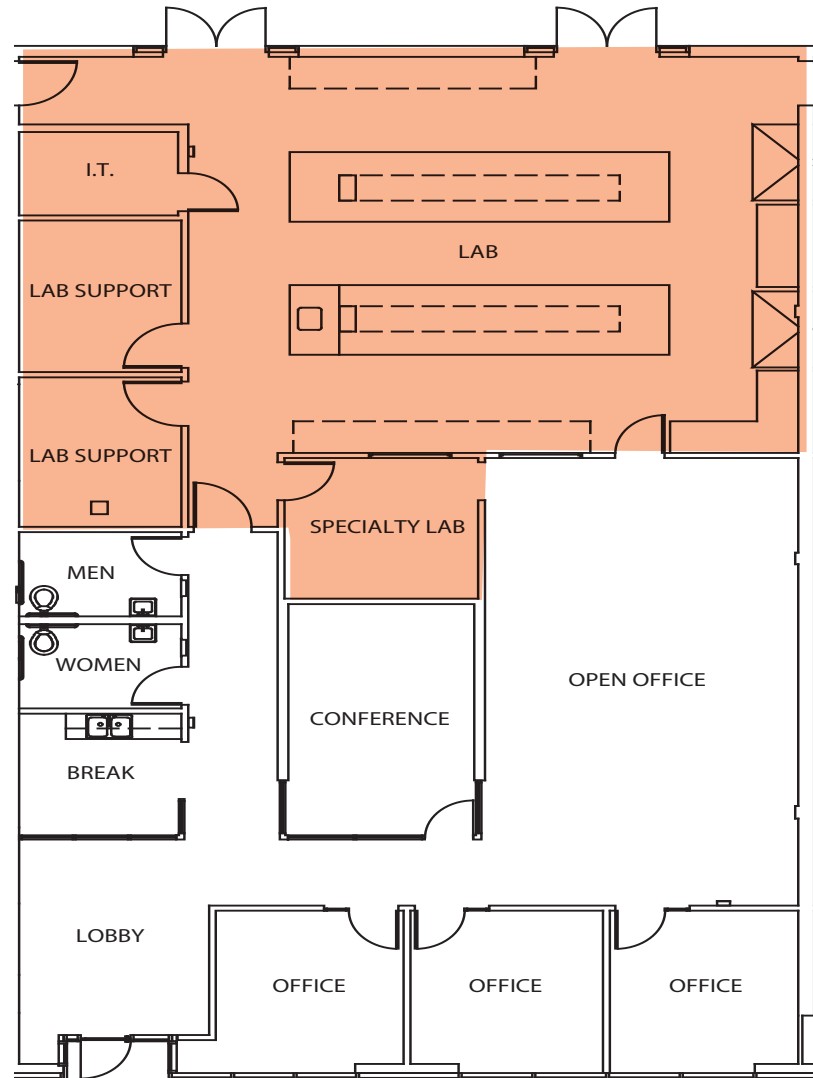
50% LAB | 50% OFFICE

Lab: 2 lab benches, 2 lab support rooms, specialty lab room, 1 fume hood

Office: 3 private offices, break room, conference room

Can be combined with adjacent Suite E space to total 7,168 SF

 Virtual Tour



 Lab  
 Office



# AMENITIES

- Fully Amenitized Campus
- Soma Cafe & Deli
- Conference Center
- Fitness Center
- Collaboration Lounge
- Catering Kitchen
- Restrooms/locker rooms
- Bike Storage
- Cafe
- Training Room
- Gym



Amenity Building



Cafe



Conference Room



Training Room



Gym



Game Room