



# For Sale

1423-1425 Keystone Ave, Lansing, MI 48911

39,346 SF

 **JLL** SEE A BRIGHTER WAY

# 1423-1425 Keystone Ave

This suburban Class C office building offers 39,346 square feet of rentable space on a 4.55-acre lot in Southern Lansing. Built in 1987, the single-story property is currently 100% occupied by DLZ Michigan Inc under single tenancy. The building features reinforced concrete construction with an exceptional car-friendly access with a parking ratio of 4.10 spaces per 1,000 square feet.



## Property Details

<b>Building Size</b>	39,346 SF
<b>First Floor</b>	19,673 SF
<b>Lower Level</b>	19,673 SF
<b>Land Size</b>	4.55 AC (198,372 SF)

<b>Year Built</b>	1987
<b>Stories</b>	1
<b>Parking</b>	4.10/1,000 SF
<b>Zoning</b>	I HVY (Heavy Industrial)

# Location

Located in the Southern Lansing submarket, this property enjoys a suburban setting with exceptional car accessibility and is fairly friendly for pedestrians and cyclists. The immediate area serves a population of approximately 5,267 within one mile, with a median household income of \$49,772. The property benefits from proximity to major thoroughfares including Keystone Avenue and South Pennsylvania Avenue, providing strong connectivity throughout the region.

**Suburban  
Southern Lansing**



# Drive Time



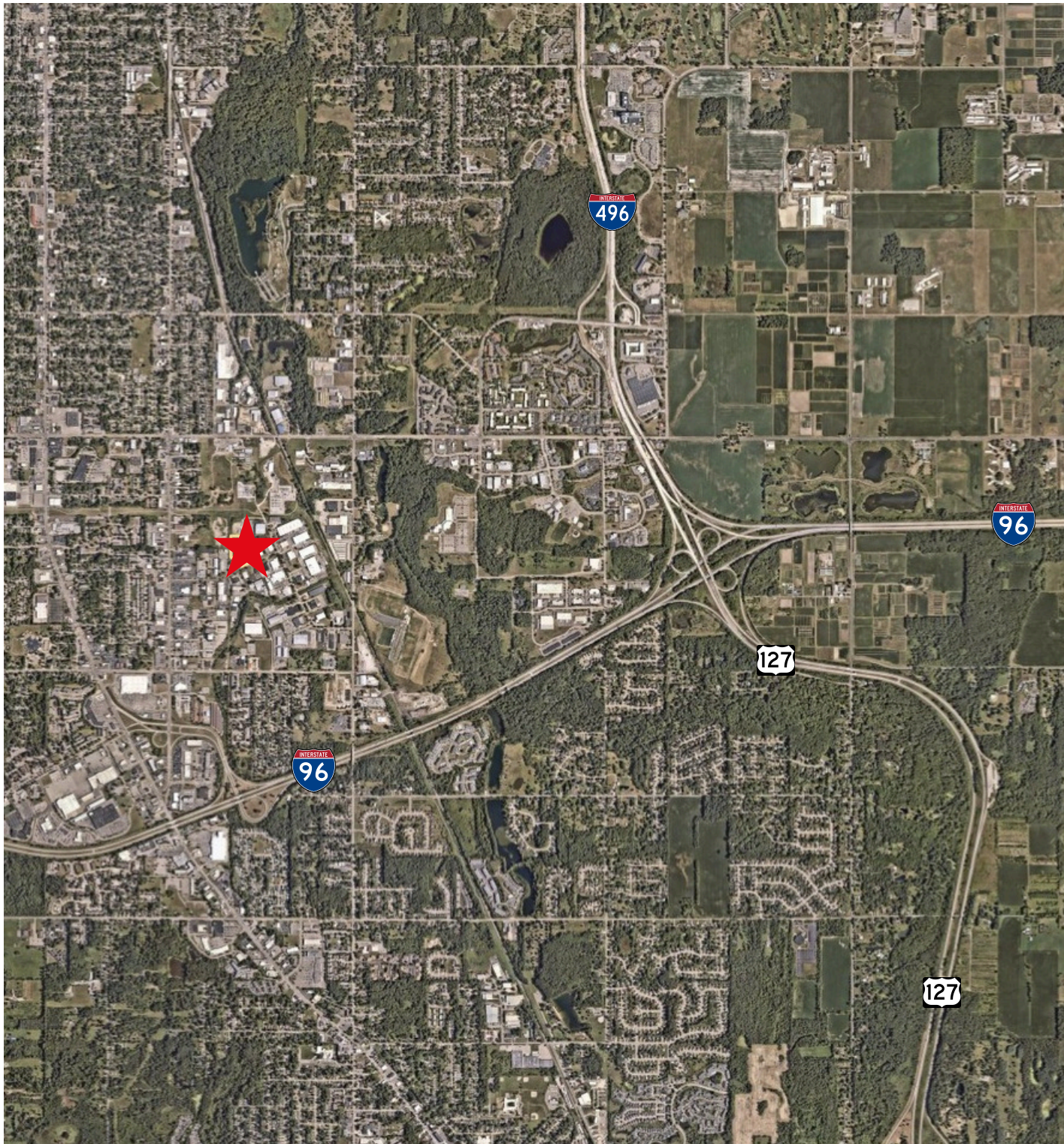
Capital Region  
International Airport: 19  
minutes (9.4 miles)



Detroit: approximately 90  
minutes east via I-96

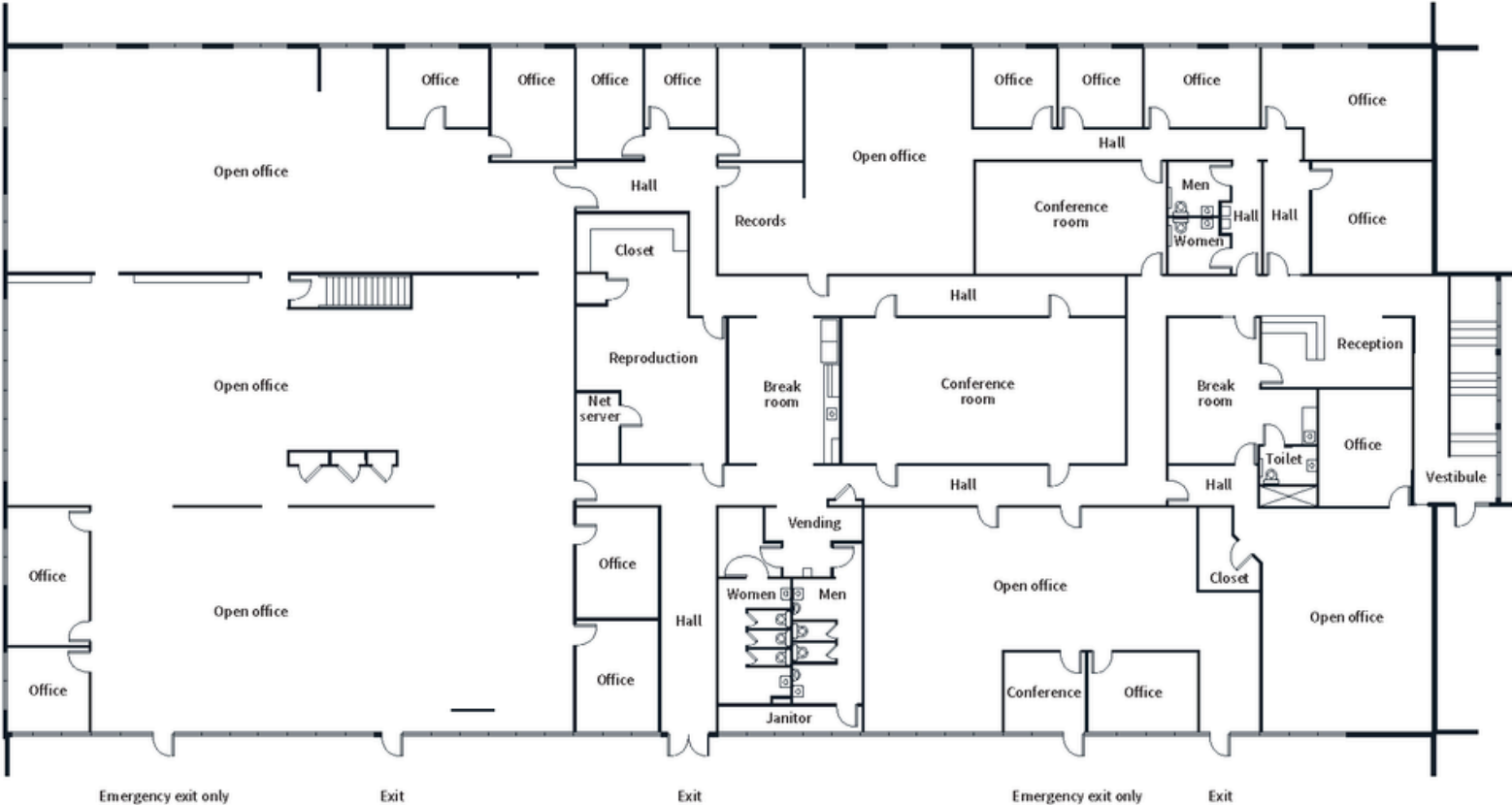


Grand Rapids: approximately 70  
minutes west via I-96



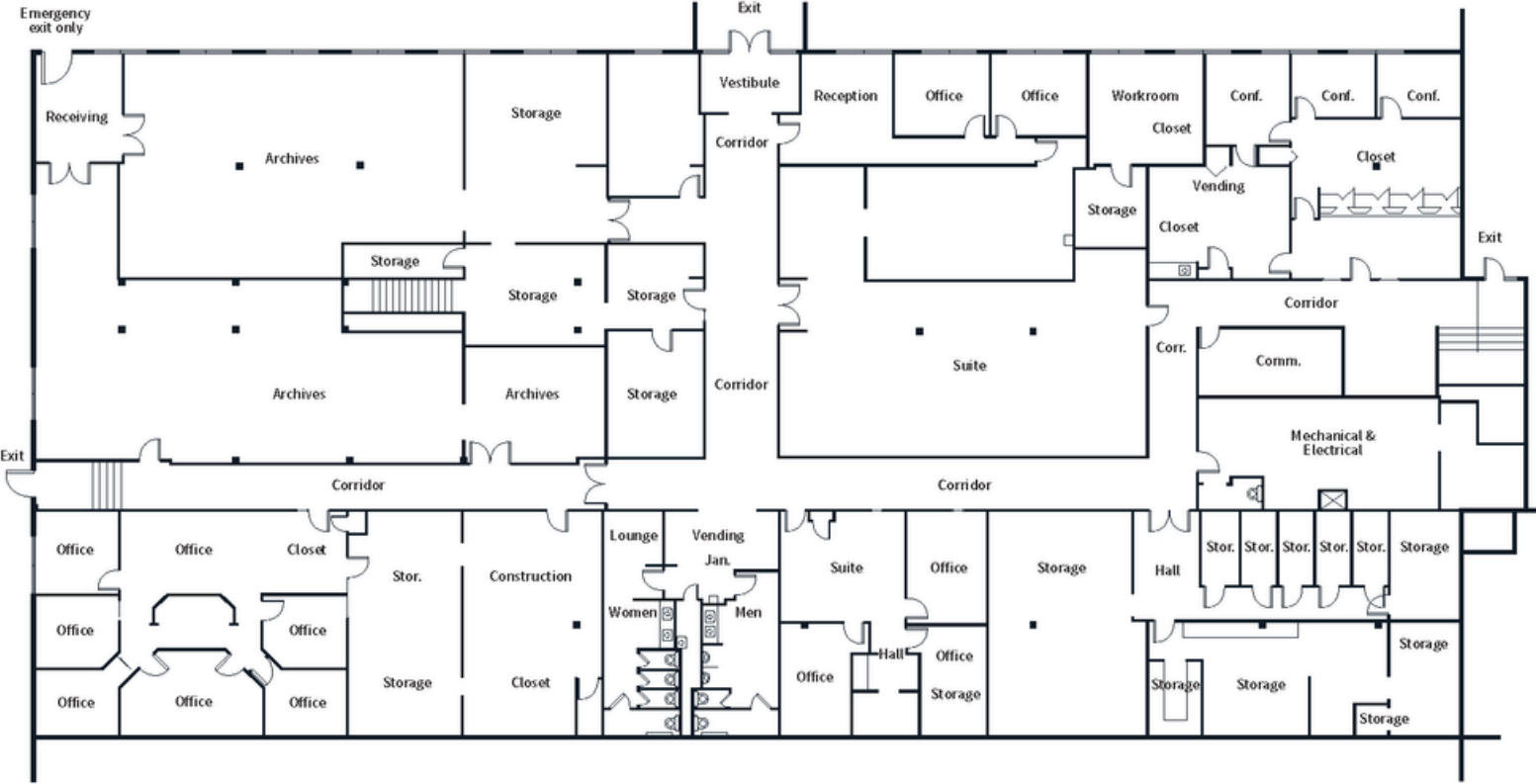
# First floor

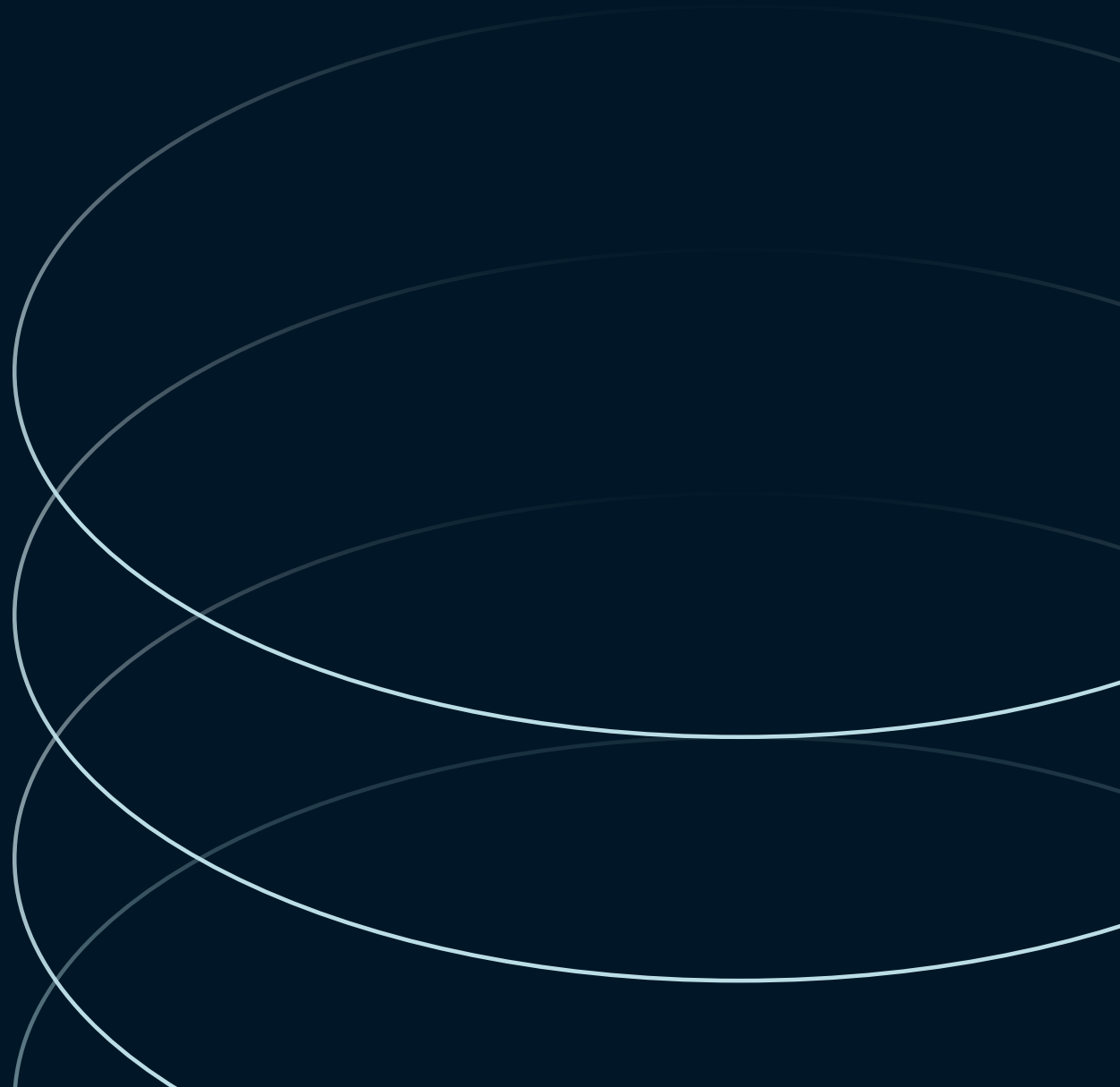
19,673 SF



# Lower level

19,673 SF





**Jeff Karger**  
**Executive Vice President**  
jeff.karger@jll.com  
+1 616 836 6493

**Jaden Mabin**  
**Associate**  
jaden.mabin@jll.com  
+1 269 329 9736