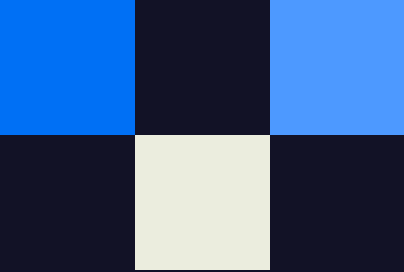




50  
CALIFORNIA  
STREET





# WELCOME TO 50 CALIFORNIA STREET

Soaring 36 floors above the city, 50 California Street offers an unparalleled work experience with breathtaking views, set in a coveted, central location.

[DISCOVER EXCELLENCE AT 50 CALIFORNIA STREET.](#)





# BUILDING HIGHLIGHTS



**BRIDGE TO  
BRIDGE VIEWS**



**PLATINUM LEED  
CERTIFICATION**



**PREMIER LOCATION  
SURROUNDED BY  
AMPLE AMENITIES**



**BRAND NEW  
ELEVATOR  
MODERNIZATION**



**140-CAR  
PARKING GARAGE**



**701,000  
TOTAL RSF**



**20,000 SF  
FLOOR PLATES**

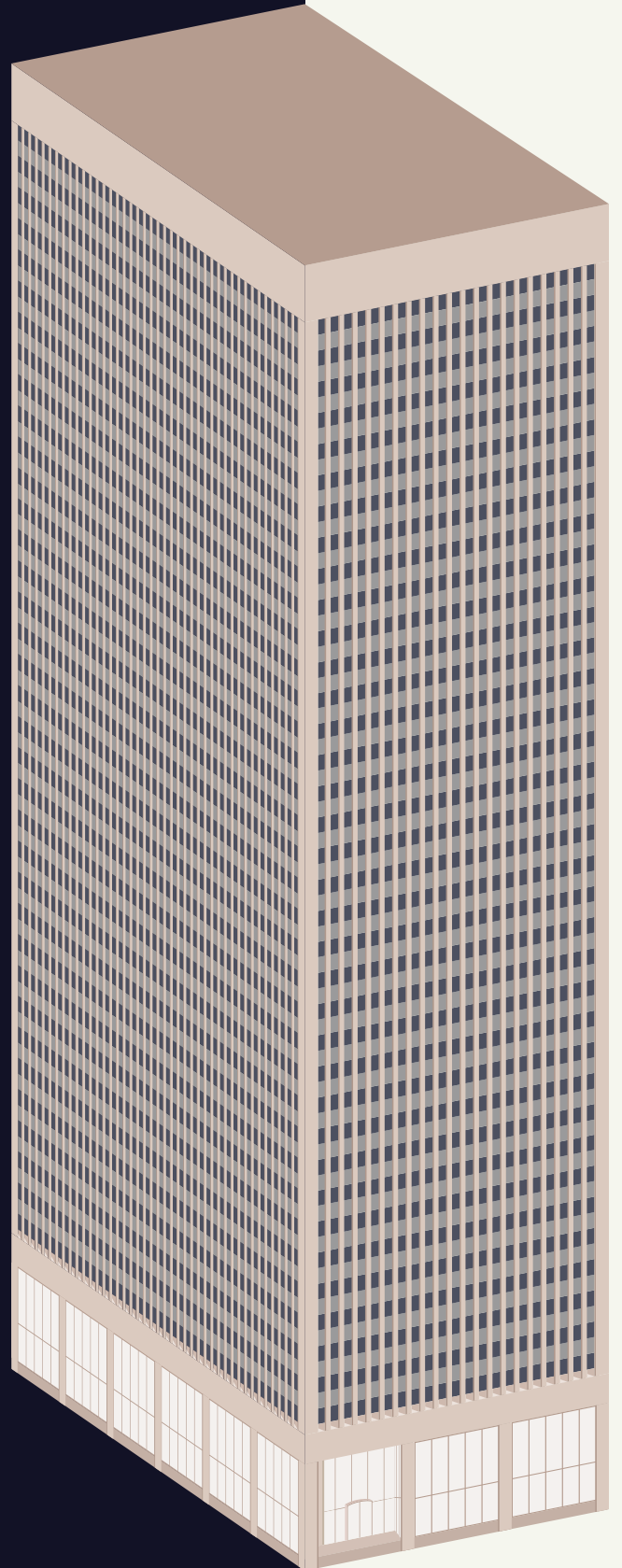


**9  
ENERGY  
STAR SCORE**



**STABLE  
OWNERSHIP**

 **50**  
CALIFORNIA  
STREET

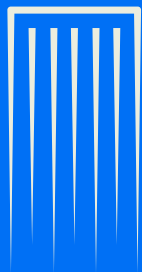


 **CLICK ON A FLOOR NUMBER**  
TO VIEW ITS PLAN



# WE CAN'T WAIT TO WELCOME YOU TO 50 CALIFORNIA STREET

DISCOVER EXCELLENCE



50  
CALIFORNIA  
STREET





50 CALIFORNIA

50

CALIFORNIA  
STREET

**CHRISTOPHER T. ROEDER**

chris.roeder@jll.com  
+1 (415) 395-4971  
Lic. #01190523

**MATTHEW D. SHEWEY**

matt.shewey@jll.com  
+1 (415) 395-7255  
Lic. #01445125

**CARLYE M. PARKER**

carlye.parker@jll.com  
+1 (415) 228-3130  
Lic. #02089807

**LEXI CASTELLINO**

lexi.castellino@jll.com  
+1 (650) 400-8344  
Lic. #2221002

