

# Savra

## CENTER WEST

Restaurant Space for Lease in Westwood Village

# THE DETAILS



**Address:**

10870 Lindbrook Drive,  
Los Angeles, CA 90024



**SF:**

±9,111 SF



**Frontage:**

200' of wraparound frontage on both  
Lindbrook Drive and Glendon Avenue



**Parking:**

Abundant with 800 onsite spaces.  
Valet potential on Lindbrook



**Rent:**

Available upon request



**Availability:**

Immediate



2<sup>nd</sup> generation restaurant with  
type-47 liquor license





# DISCOVER YOUR CULINARY DESTINATION



In one of Los Angeles' most prestigious and desirable neighborhoods, resides this exceptional restaurant opportunity with over 50 feet of prime corner frontage and signage at the intersection of Lindbrook Drive and Glendon Avenue. Located in the heart of Westwood Village, surrounded by UCLA, Ronald Reagan UCLA Medical Center, and some of the most affluent residential markets. The space is a golden opportunity for a proven local operator or national brand seeking expansion in one of LA's most under served markets.



## HIGHLIGHTS:

Includes full second generation kitchen and all existing equipment

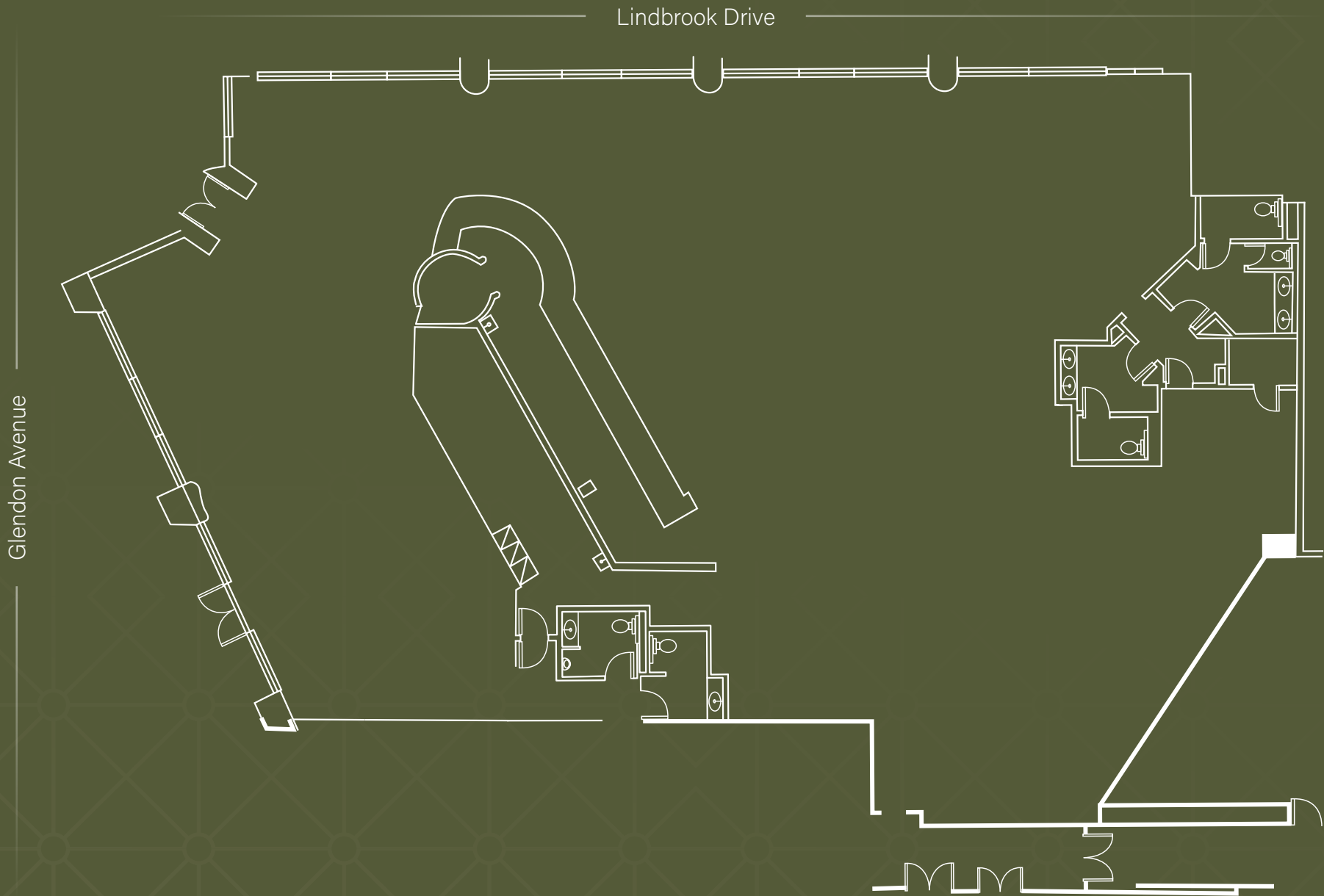
Opportunity for outdoor patio dining

Abundant on-site parking available

Street may be used for valet parking

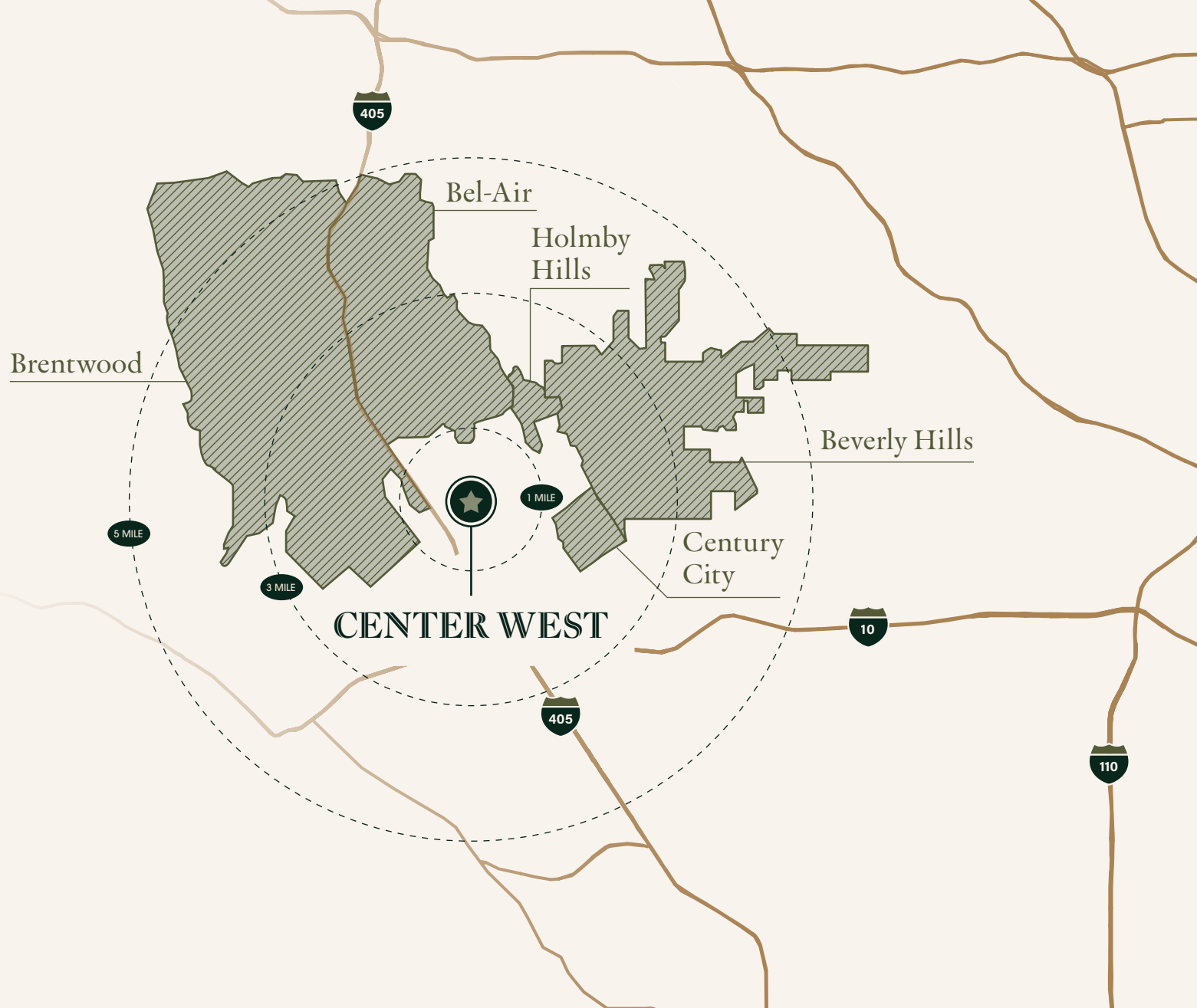


**RESTAURANT:**  
Rentable: ±9,111 SF



DEMOGRAPHICS

# WITHIN 3 MILES



**\$201,948**

Average HH Income

**\$5.1B**

Total Retail Spending

**36.1**

Median Age

**419,887**

Daytime Population

**\$1,839,502**

Median Home Value

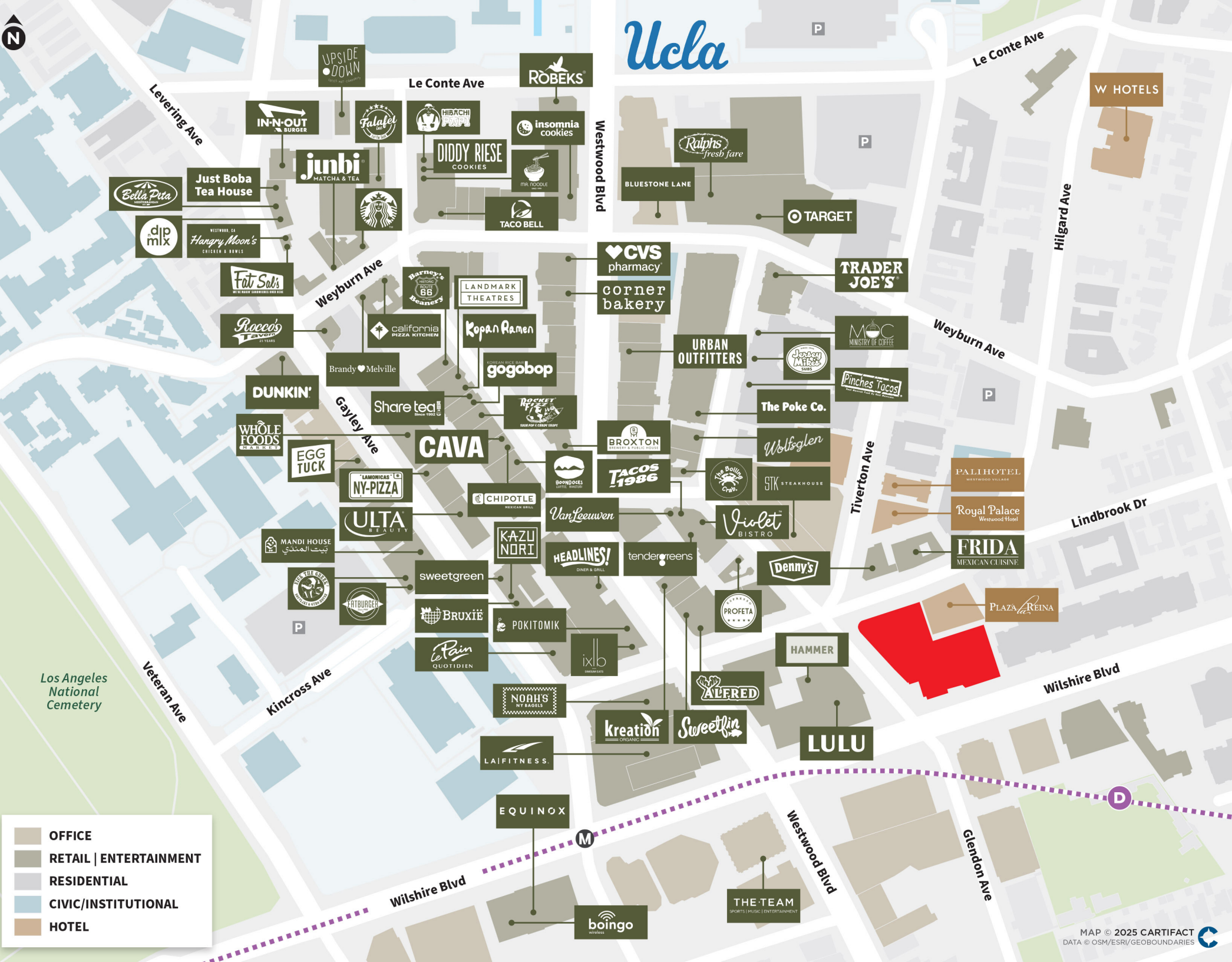
**79%**

College Degree



# Ucla

- OFFICE
- RETAIL | ENTERTAINMENT
- RESIDENTIAL
- CIVIC/INSTITUTIONAL
- HOTEL



# CENTER WEST

10877 Wilshire Boulevard, Los Angeles, CA

**DEVIN KLEIN**

devin.klein2@icloud.com

310 595 3641

CA LIC. #01471525



**MATTHEW FAINCHTEIN**

Managing Director

matthew.fainchtein@jll.com

310 430 2548

CA LIC. #01503546

**RYAN HAWLEY**

Vice President

ryan.hawley@jll.com

310 407 2160

CA LIC. #02146998

Although information has been obtained from sources deemed reliable, JLL does not make any guarantees, warranties or representations, express or implied, as to the completeness or accuracy as to the information contained herein. Any projections, opinions, assumptions or estimates used are for example only. There may be differences between projected and actual results, and those differences may be material. JLL does not accept any liability for any loss or damage suffered by any party resulting from reliance on this information. If the recipient of this information has signed a confidentiality agreement with JLL regarding this matter, this information is subject to the terms of that agreement. ©2026 Jones Lang LaSalle Brokerage, Inc. All rights reserved.