

# Class A Office Space

## Crossroads Corporate Center VIIB

20935 Swenson Dr., Waukesha, WI 53186

Jones Lang LaSalle Brokerage, Inc. a licensed real estate broker



## 20935 Swenson Dr.

Crossroads Corporate Center VIIB is a premier Class A office building located in the heart of Crossroads Corporate Center. Built in 1990 and renovated in 2020, this 71,276 RSF building boasts updated common areas and a robust, modern amenity package. Situated at Goerkes Corners, the building is surrounded by an abundance of retail, dining, and lodging options along Bluemound Rd, Baker Rd, and Mooreland Blvd. Downtown Milwaukee is just 18 minutes away, combining suburban comfort with urban proximity.



Move-in ready suites available



Outdoor deck overlooking pond



Updated conference center & tenant lounge



Quick access to I-94 & Bluemound Rd.

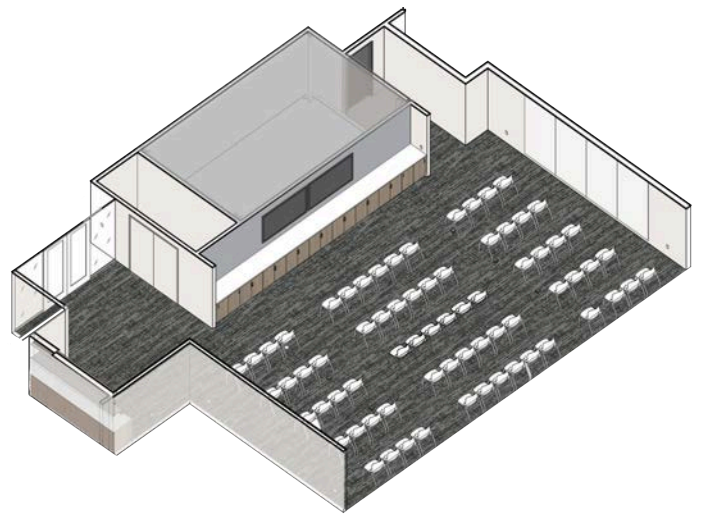
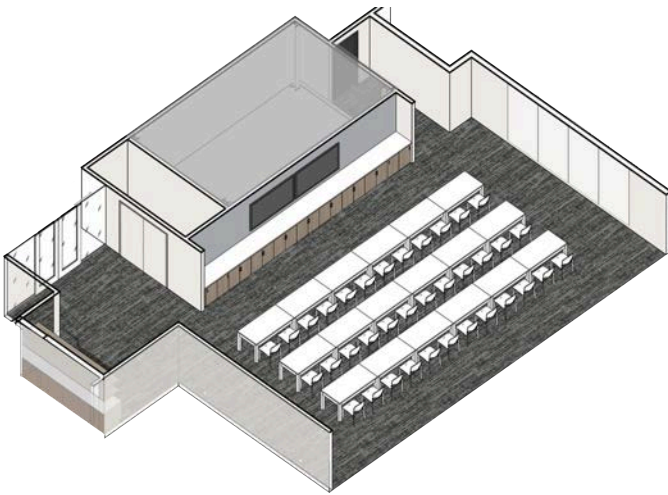


Executive parking available at \$90/ month  
4 / 1,000 SF overall parking ratio



35+ capacity training center

### Training Center renderings



Max. Contiguous

**6,618**

RSF

Lease rate PSF

**\$15.00**

NNN

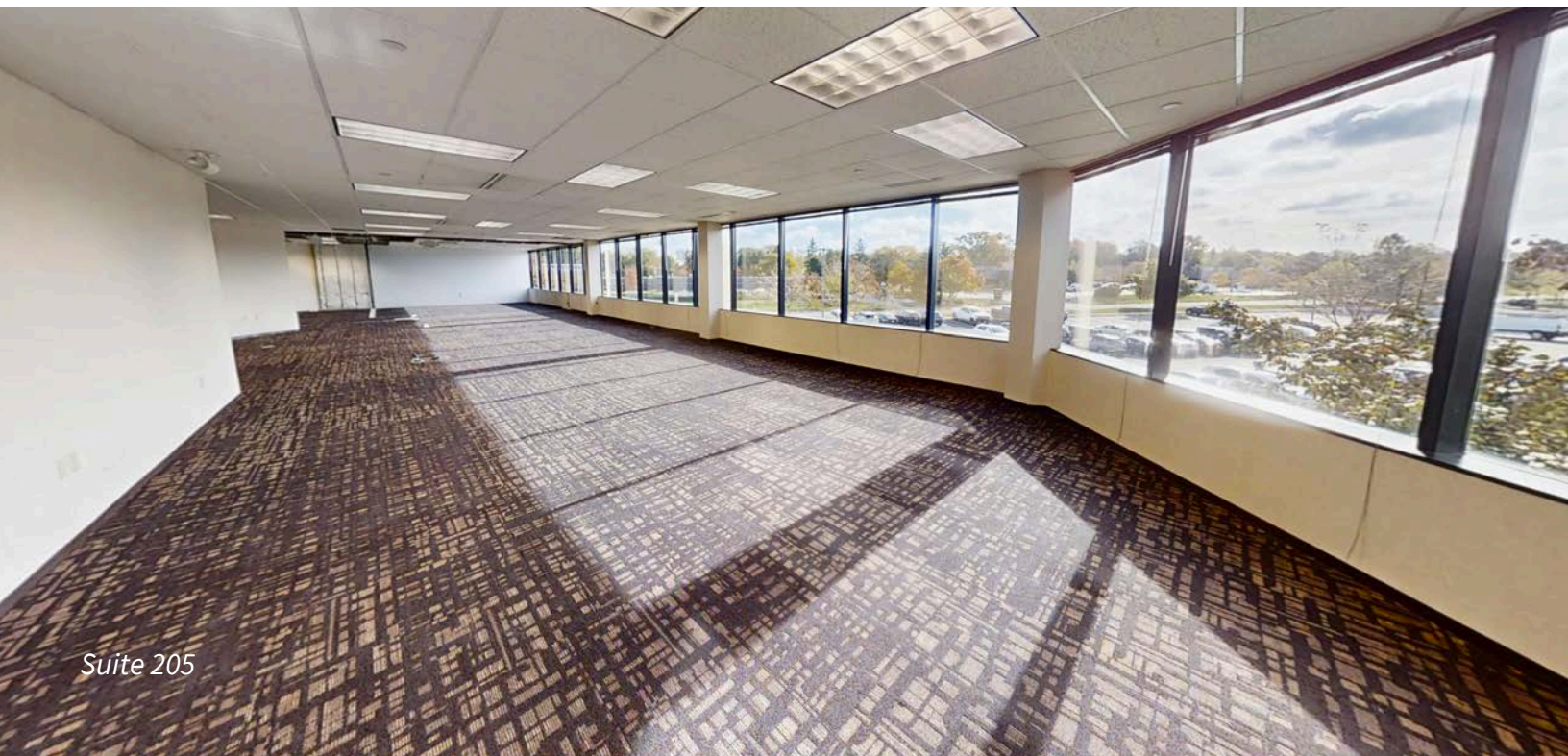
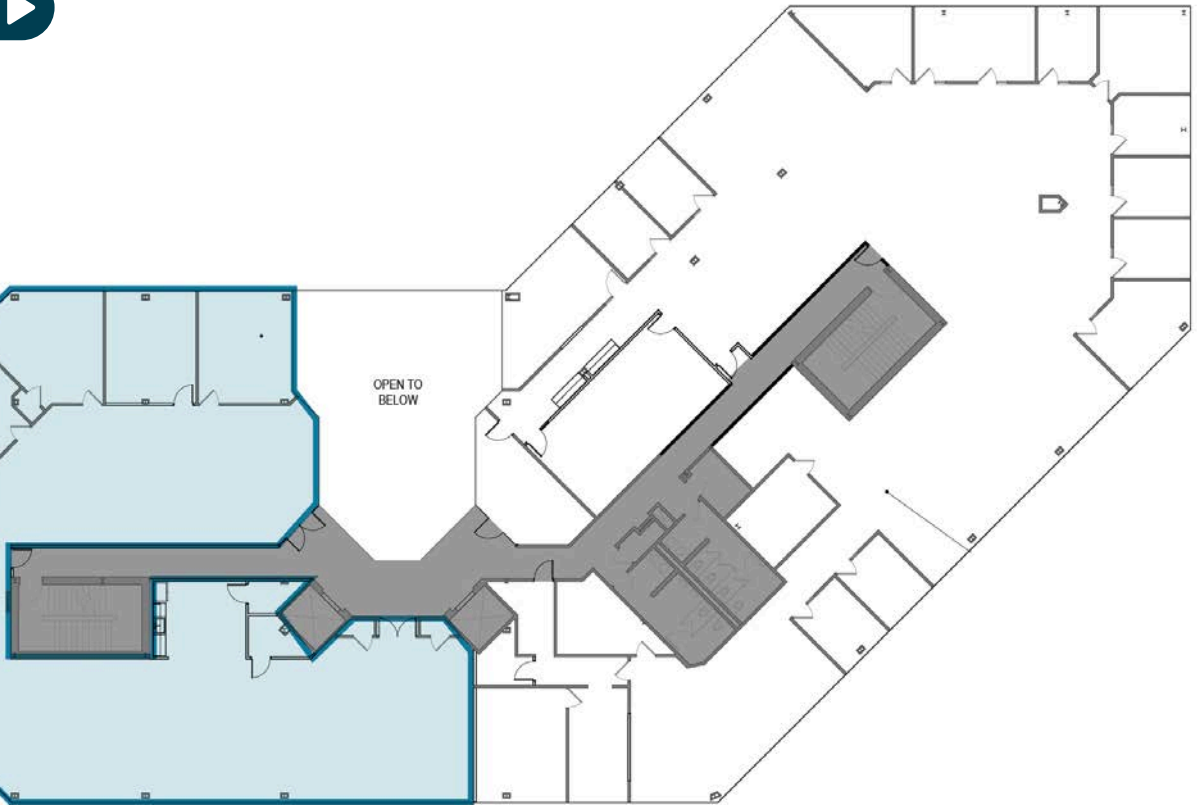
Est OPEX (2026)

**\$9.52**

PSF

## Suite 205: **6,618 RSF**

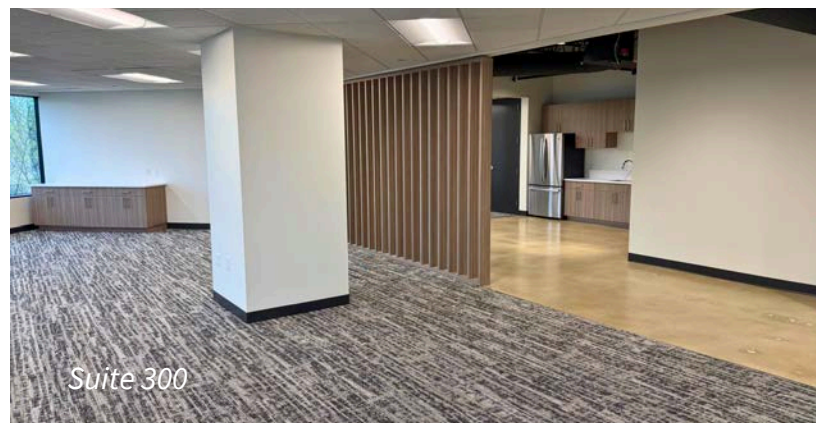
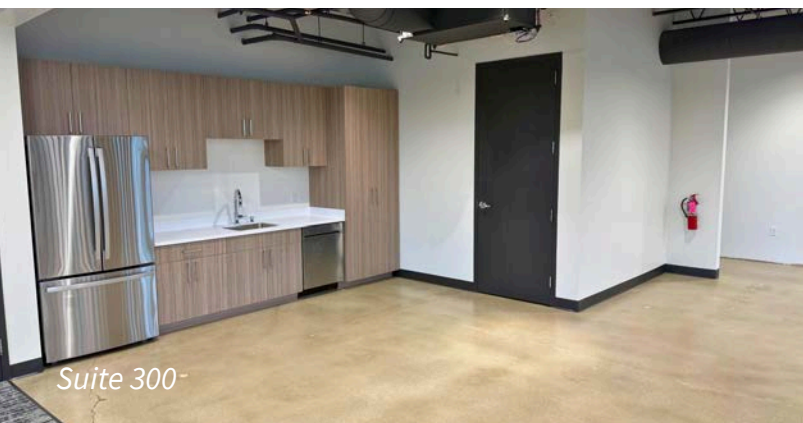
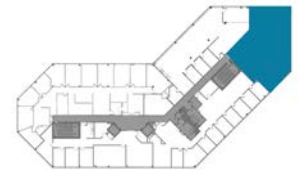
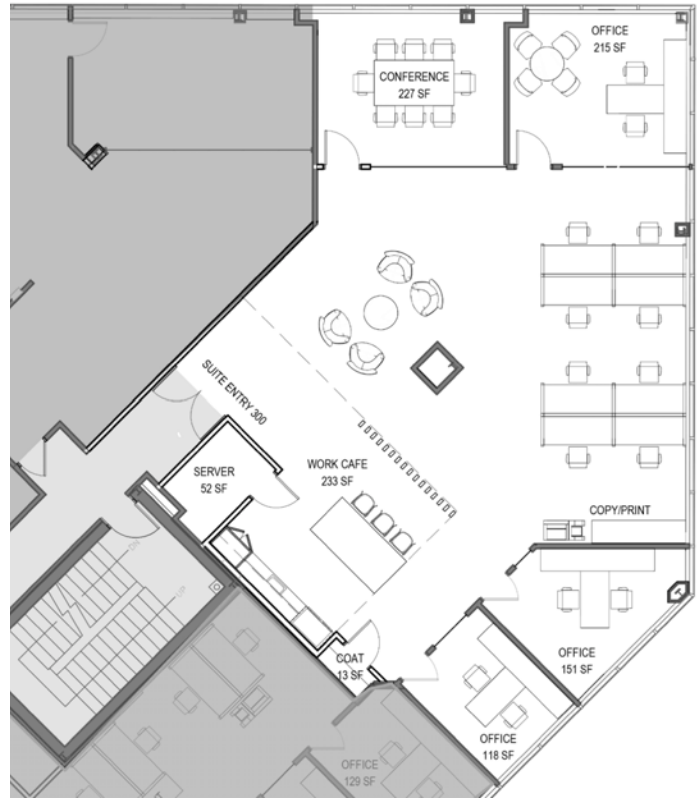
[3D Tour](#)



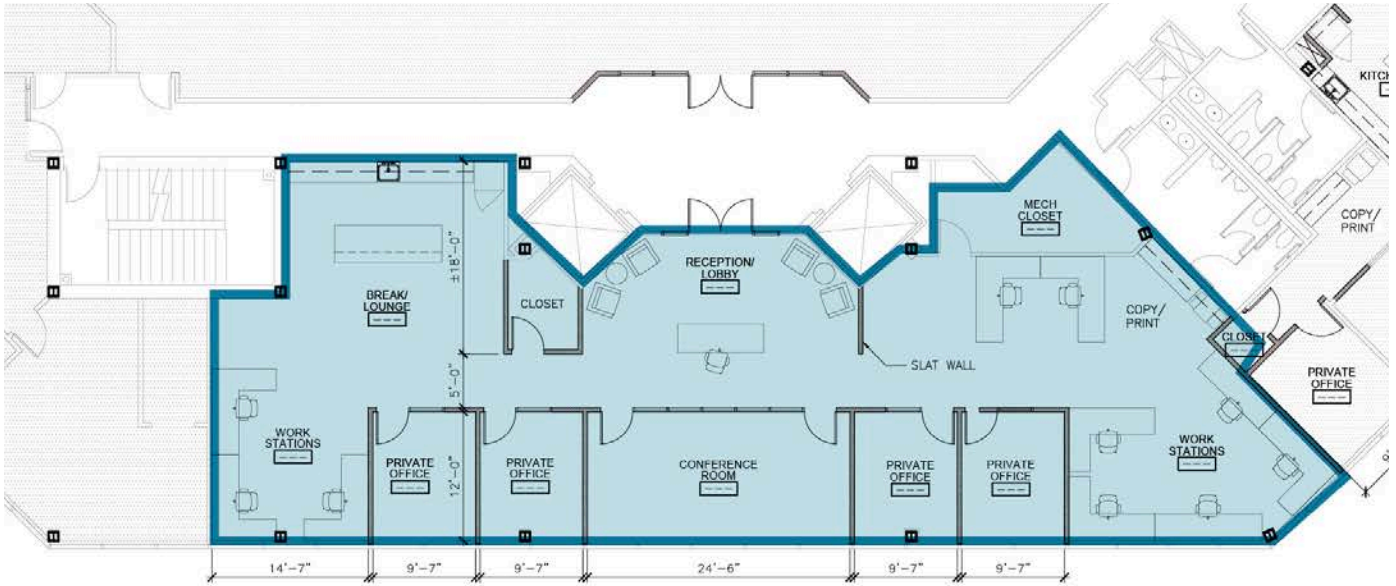
Suite 205

# Spec Suite 300: **2,816 RSF**

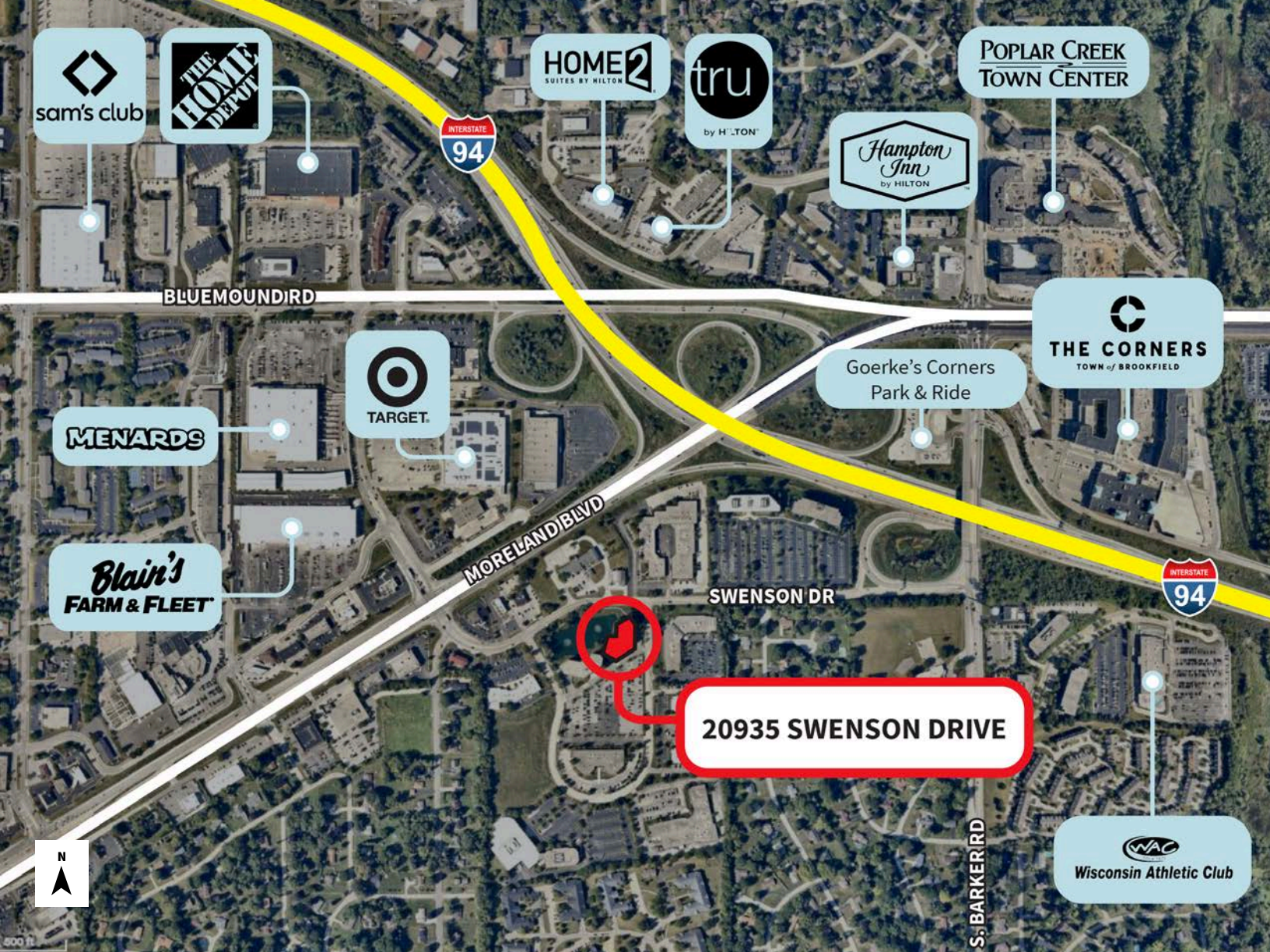
[3D Tour](#)



# Spec Suite 400: **3,870 RSF**



*Building Lobby / Lounge*



**sam's club**

**THE HOME DEPOT**

**HOME2**  
SUITES BY HILTON

**tru**  
by HILTON

**POPLAR CREEK TOWN CENTER**

**Hampton Inn**  
by HILTON

**BLUEMOUND RD**

**TARGET**

**Goerke's Corners Park & Ride**

**THE CORNERS**  
TOWN OF BROOKFIELD

**MENARDS**

**MORELAND BLVD**

**Blain's FARM & FLEET**

**SWENSON DR**

**20935 SWENSON DRIVE**

**INTERSTATE 94**



**S. BARKER RD**

**WAC**  
Wisconsin Athletic Club

**2024 Demographics | 2 miles**

- Population: 19,521
- Median age: 43.8
- Avg household income: \$106,529

**2024 Demographics | 5 miles**

- Population: 130,817
- Median age: 41.5
- Avg household income: \$105,661

**1 MIN**

to Interstate 94

**18 MIN**

to Downtown MKE

**10 MIN**

to Downtown Waukesha

**25 MIN**

to Mitchell International Airport



For leasing, contact:

**Dan Jessup**  
414 254 1572  
dan.jessup@jll.com

**Julia Howe**  
319 512 9535  
julia.howe@jll.com

Although information has been obtained from sources deemed reliable, neither Owner nor JLL makes any guarantees, warranties or representations, express or implied, as to the completeness or accuracy as to the information contained herein. Any projections, opinions, assumptions or estimates used are for example only. There may be differences between projected and actual results, and those differences may be material. The Property may be withdrawn without notice. Neither Owner nor JLL accepts any liability for any loss or damage suffered by any party resulting from reliance on this information. If the recipient of this information has signed a confidentiality agreement regarding this matter, this information is subject to the terms of that agreement. © 2026 Jones Lang LaSalle IP, Inc. All rights reserved.