

WestPark - Building D

Office & Flex Space Sublease

11,900 SF
Available for Sublease

8271 154th Avenue NE, Redmond, WA

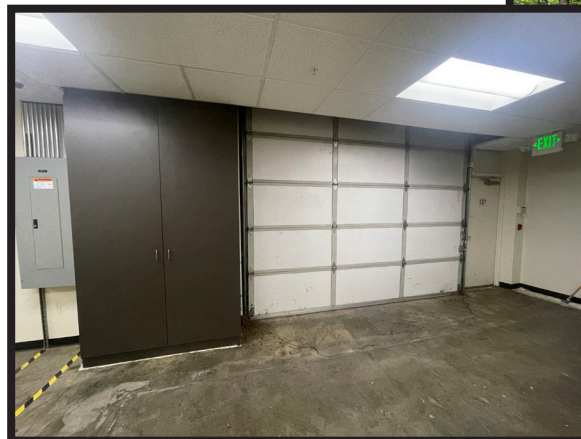


Location

- Central Redmond location
- Walkable amenities

Highlights

- 11,900 Rentable SF
- Office portion: 9,968 SF
 - 16 private offices
 - Reception area
 - 10' ceilings
- Warehouse portion: 1,932 SF
 - 2 grade-level doors
- Sublease expires June 30, 2027



Available Now - Sublease expires June 30, 2027

Call brokers for rates

Property highlights

11,900 SF

Total size

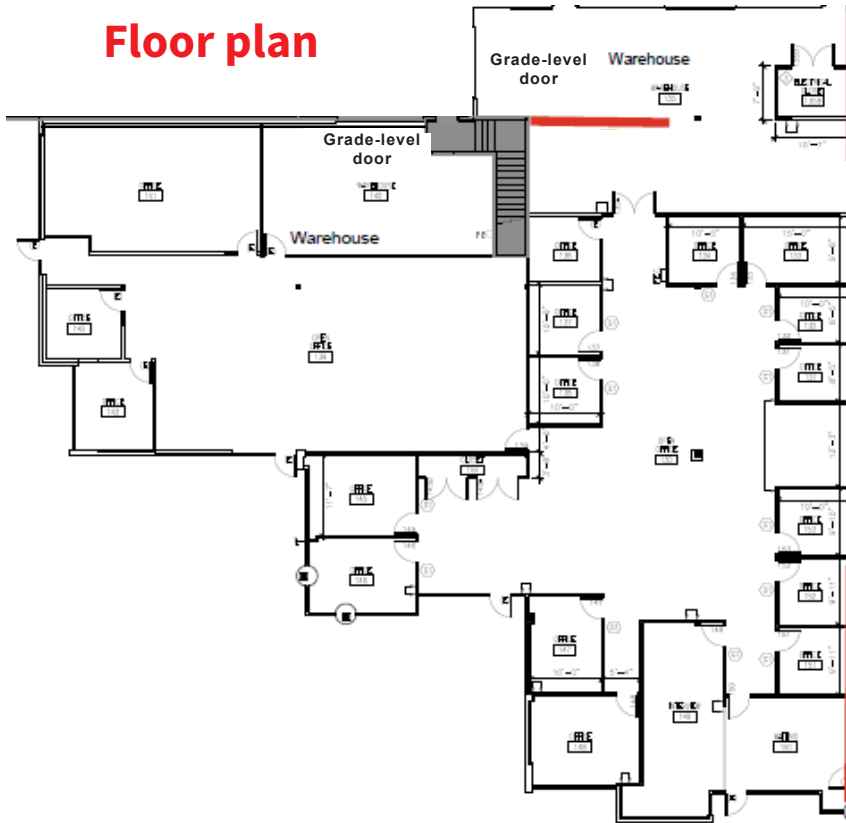
~9,968 SF

Office

~1,932 SF

Warehouse

Floor plan



ALEC GOODWIN

+1 424 421 9245

alec.goodwin@jll.com

MCKENNA HARTMAN

+1 206 245 0708

mckenna.hartman@jll.com

Jones Lang LaSalle Brokerage, Inc.